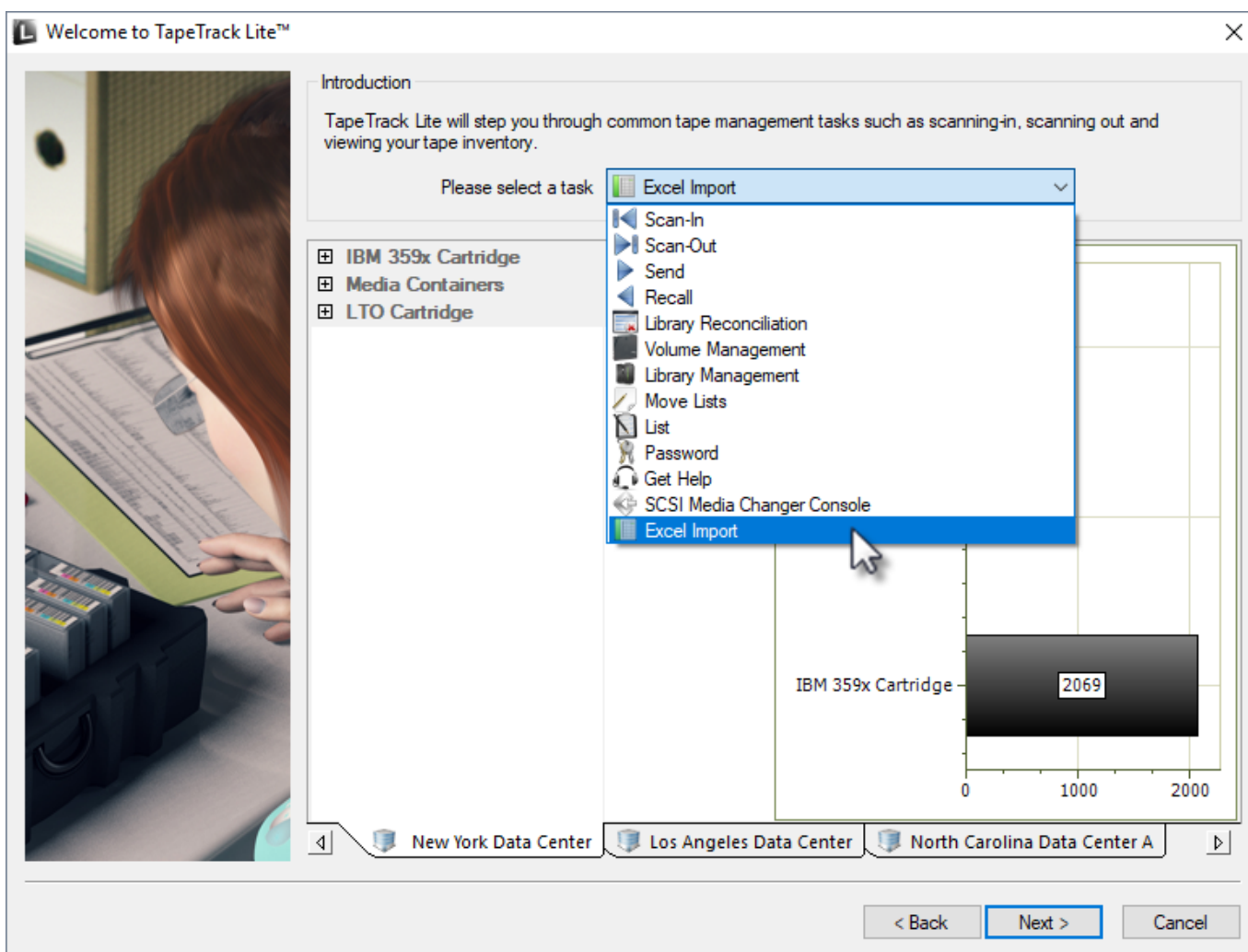


# Excel Import

The Excel import task allows you to import volume data from an excel xls file by mapping the Excel values to TapeTrack attributes.

## Importing

Once logged into TapeTrack Lite, select Excel Import from the Library Management Task's drop-down menu.



Detailed information on this function can be viewed in the [technotes section](#).

From: <https://rtfm.tapetrack.com/> - **TapeTrack Documentation**

Permanent link: [https://rtfm.tapetrack.com/lite/function\\_excel\\_import?rev=1540430187](https://rtfm.tapetrack.com/lite/function_excel_import?rev=1540430187)

Last update: **2025/01/21 22:07**



