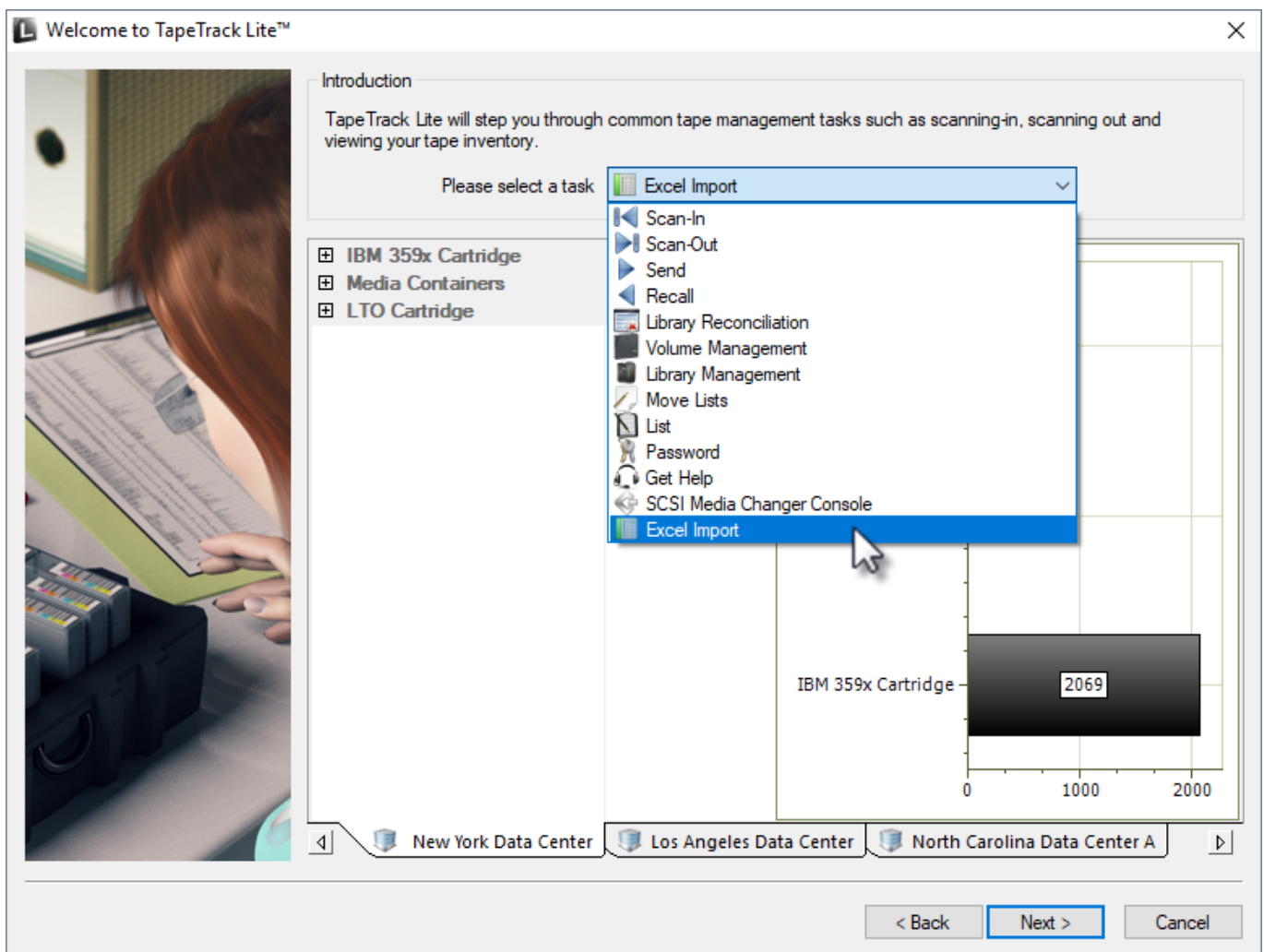


Excel Import

The Excel import task allows you to import volume data from an excel xls file by mapping the Excel values to TapeTrack attributes.

Importing

Once logged into TapeTrack Lite, select Excel Import from the Library Management Task's drop-down menu.



Detailed information on this function can be viewed in the [technotes section](#).

From: <https://rtfm.tapetrack.com/> - **TapeTrack Documentation**

Permanent link: https://rtfm.tapetrack.com/lite/function_excel_import?rev=1544143264

Last update: **2025/01/21 22:07**



