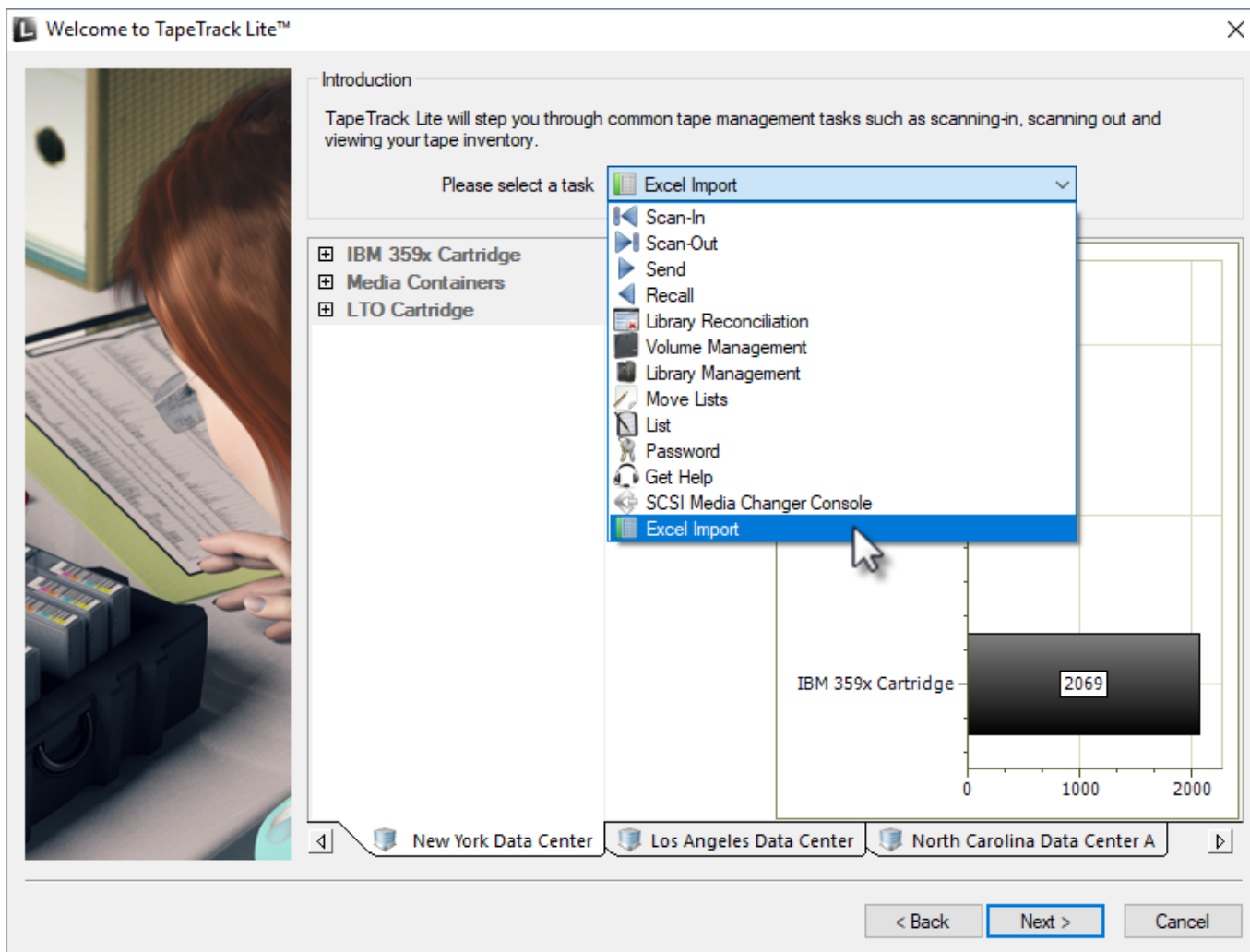


Excel Import

The Excel import task allows you to import volume data from an excel xls file by mapping the Excel values to TapeTrack attributes.

Importing

Select Excel Import from the drop-down task menu and click Next to continue.



Detailed information on this function can be viewed in the [technotes section](#).

From: <https://rtfm.tapetrack.com/> - **TapeTrack Documentation**

Permanent link: https://rtfm.tapetrack.com/lite/function_excel_import?rev=1544143309

Last update: **2025/01/21 22:07**

