

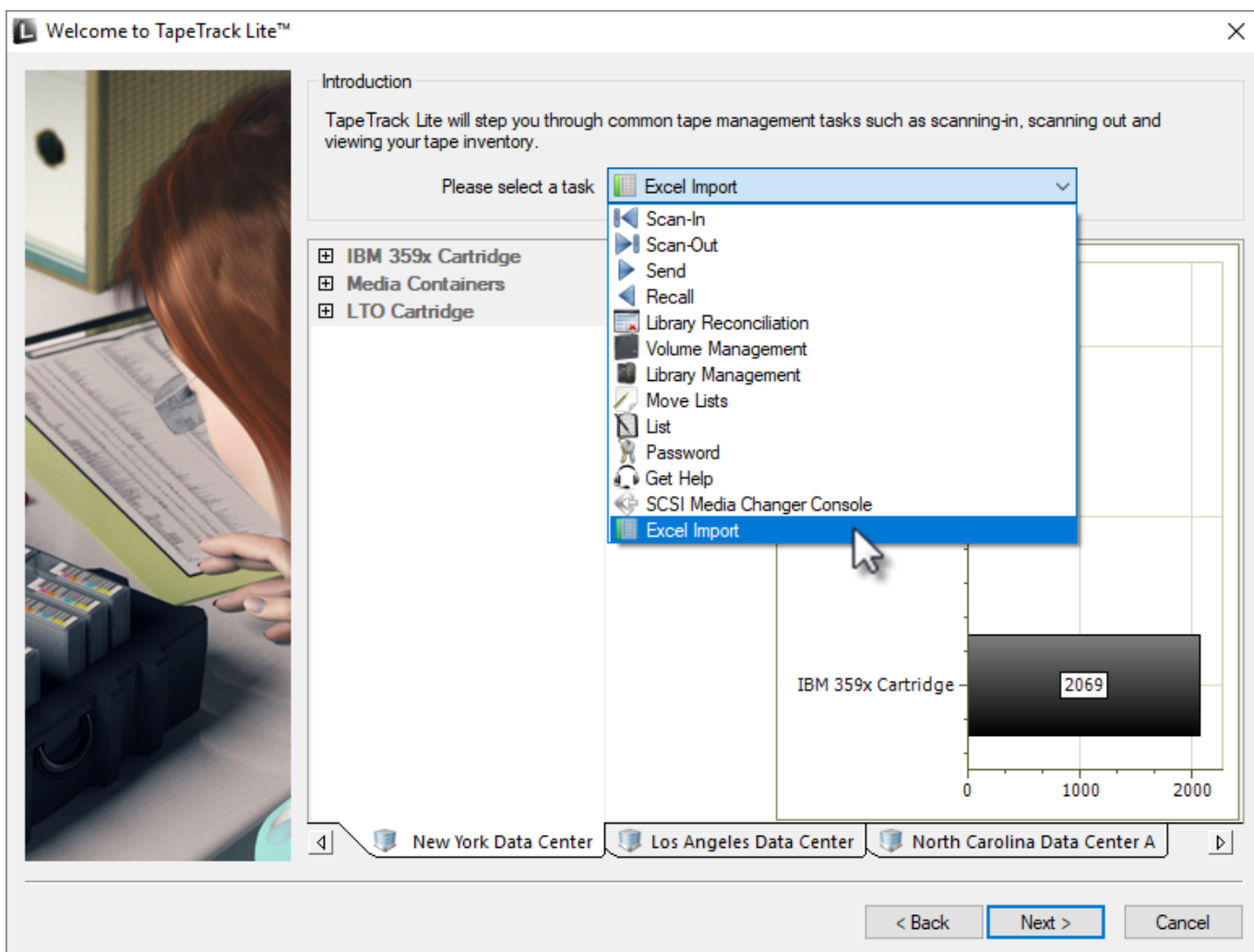
Excel Import

The Excel import task allows you to import **Volume** data from an Excel .xls or .xlsx file by mapping the Excel columns to **Volume** values and attributes.

Excel Import Process

Select Excel Import

Select Excel Import from the drop-down task menu and click Next to continue.



Detailed information on this function can be viewed in the [technotes section](#).

From:
<https://rtfm.tapetrack.com/> - **TapeTrack Documentation**

Permanent link:
https://rtfm.tapetrack.com/lite/function_excel_import?rev=1544144070

Last update: **2025/01/21 22:07**

