

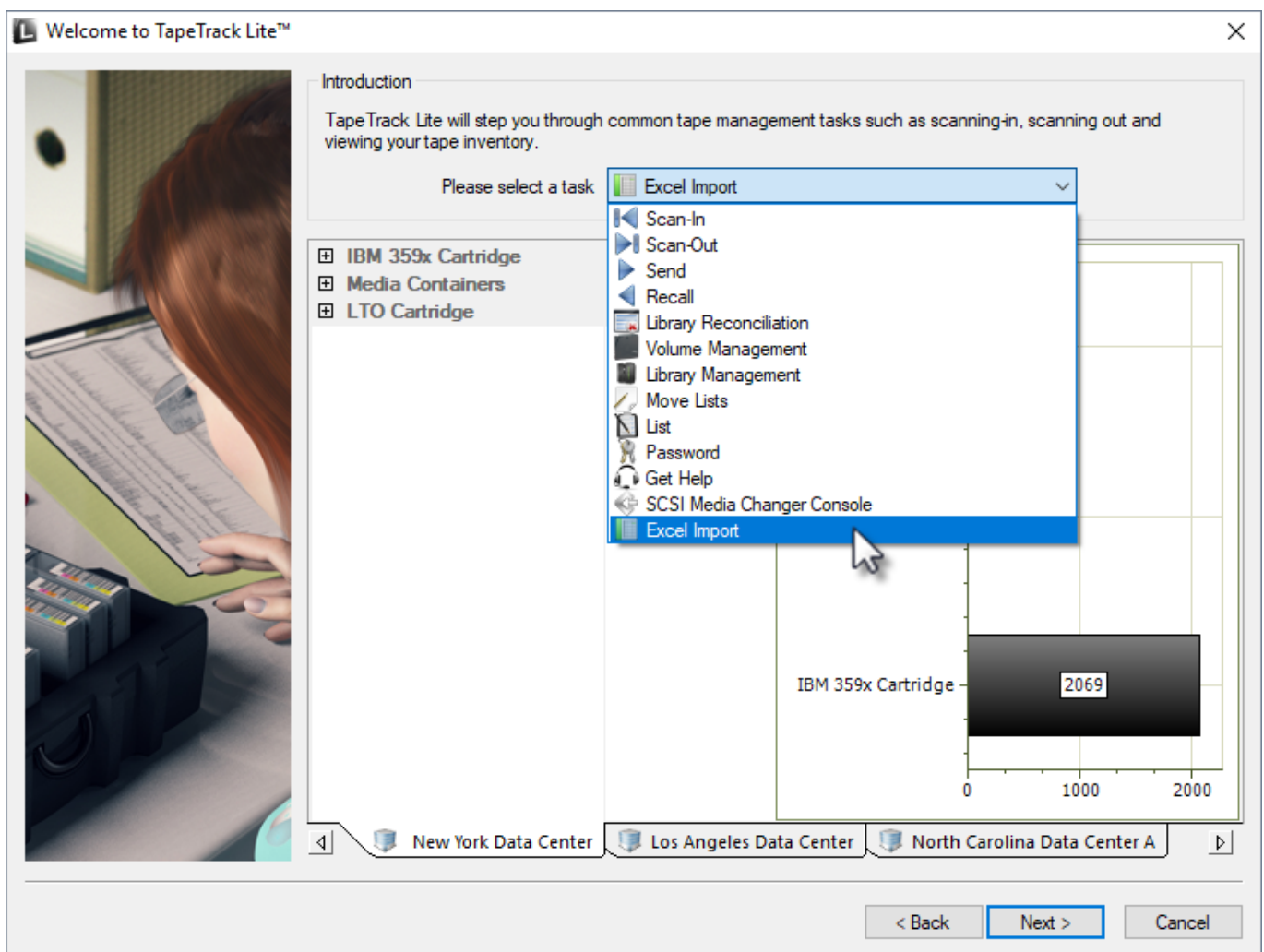
# Excel Import

The Excel Import task allows you to import **Volume** data from an Excel .xls or .xlsx file by mapping the Excel columns to **Volume** values and attributes.

## Excel Import Process

### Select Excel Import

Select Excel Import from the **Task Menu** and click Next to continue.



Detailed information on this function can be viewed in the [technotes section](#).

From:

<https://rtfm.tapetrack.com/> - **TapeTrack Documentation**

Permanent link:

[https://rtfm.tapetrack.com/lite/function\\_excel\\_import?rev=1544577942](https://rtfm.tapetrack.com/lite/function_excel_import?rev=1544577942)

Last update: **2025/01/21 22:07**

