

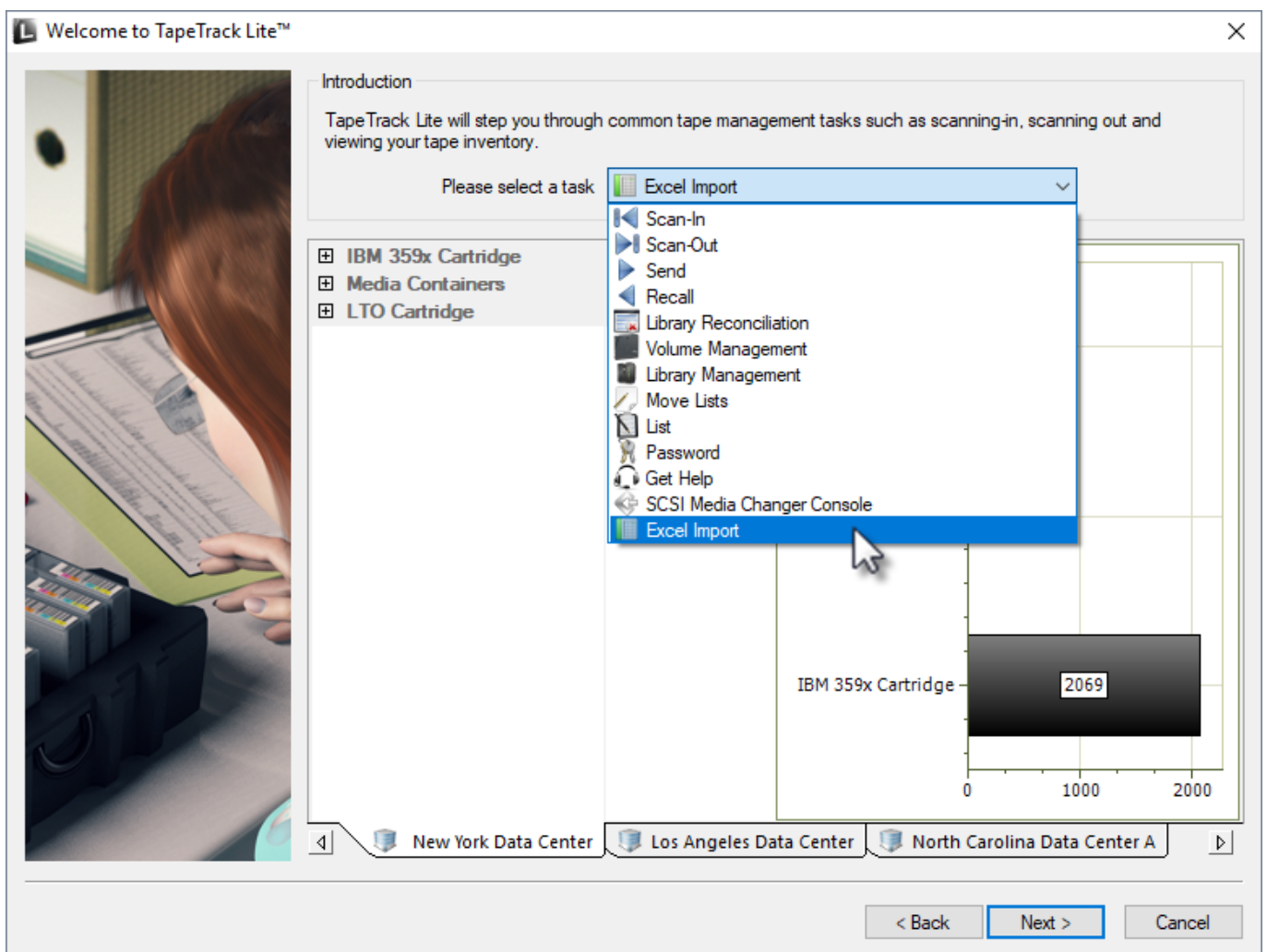
Excel Import

The Excel Import task allows you to import [Volume](#) data from an Excel .xls or .xlsx file by mapping the Excel columns to [Volume](#) values and Attributes.

Excel Import Process

Select Excel Import

Select Excel Import from the **Task Menu** and click Next to continue.



Detailed information on this function can be viewed in the [technotes section](#).

From:

<https://rtfm.tapetrack.com/> - **TapeTrack Documentation**

Permanent link:

https://rtfm.tapetrack.com/lite/function_excel_import?rev=1565826379

Last update: **2025/01/21 22:07**

