

Library Management

Overview

The TapeTrack Lite Library Management function allows you to

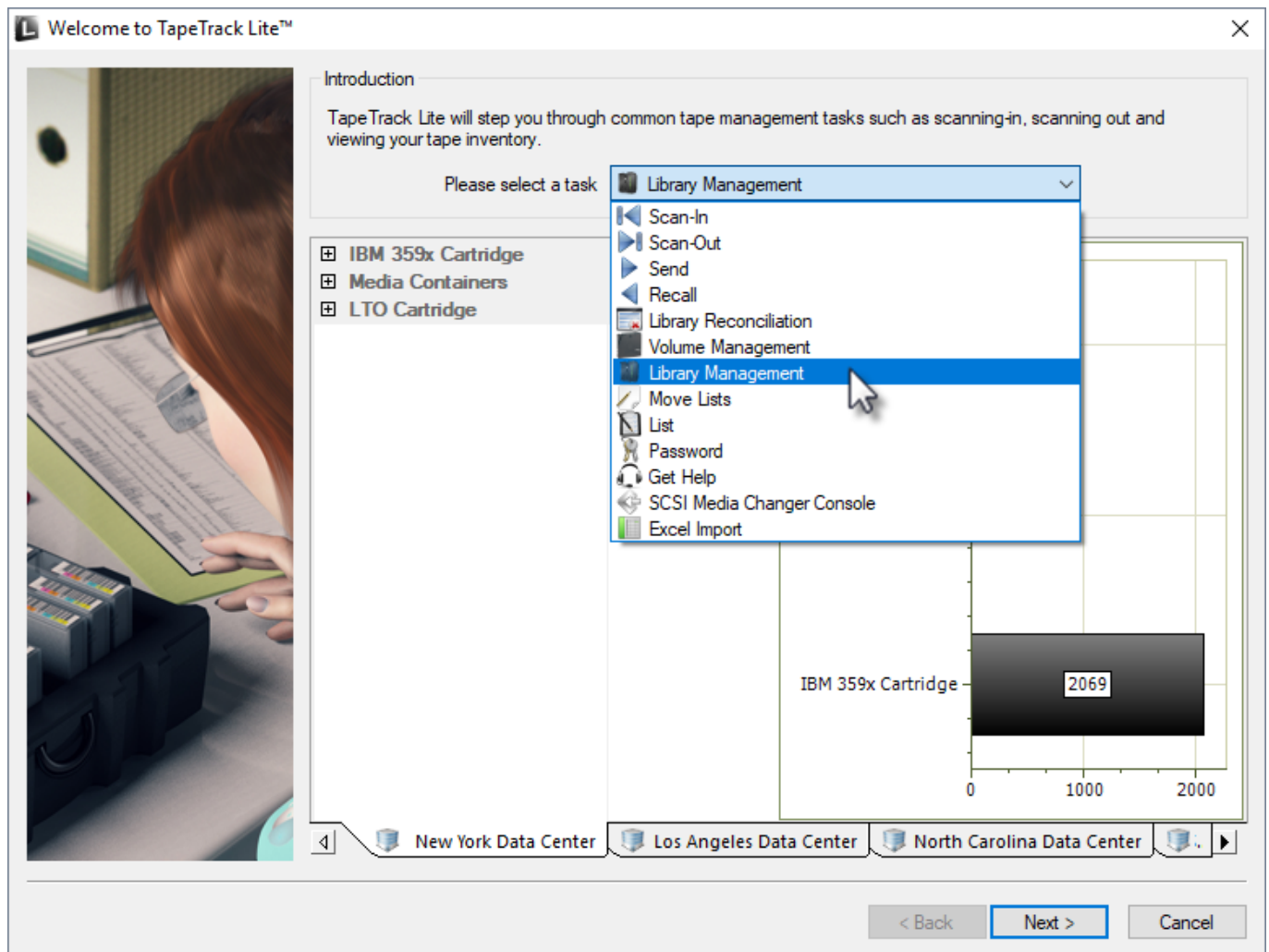
Video Walkthrough

Video coming soon.....

Steps

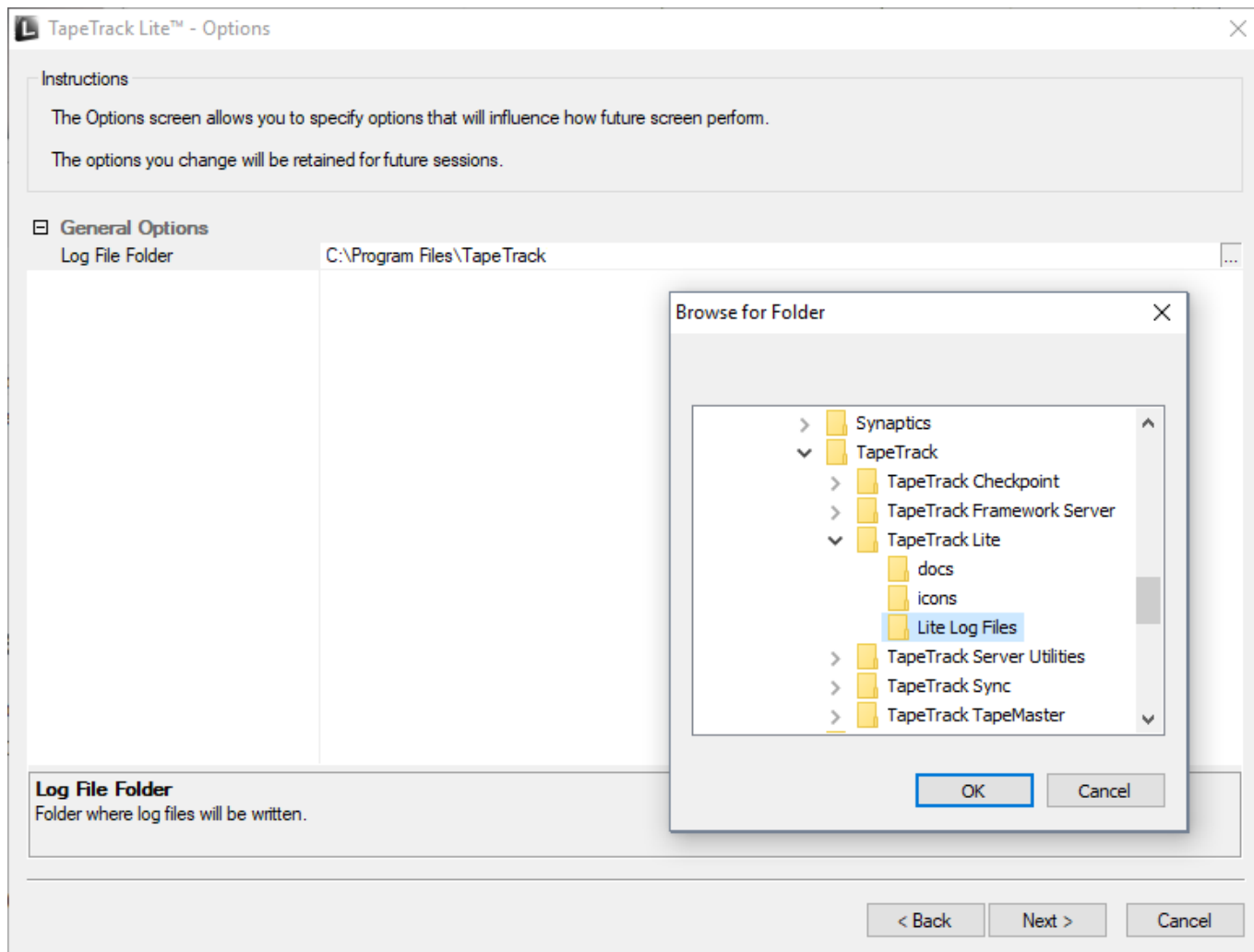
Select Library Management

Select Library Management from the Library Management Tasks drop-down menu.



Options

This will open the Options window. If required you can set the location for the log files to be written to, or leave the default. To change the default directory, click in the right of the Log File Folder and click on the more options button (...) and select the preferred directory.



Click Next button to continue.

Customer Selection

Select the account or customer that you want to manage tapes for by double-clicking the [Customer-ID](#) or left clicking the customer-ID and clicking Next at the bottom of the page.

TapeTrack Lite™ - Customer Selection

Instructions

The Customer Selection screen allows you to select one TapeTrack Customer that will be the subject of operations in subsequent screens.
You may select a Customer by double clicking the Customer, or by clicking the Customer and pressing the Next button.

Customer	Volumes	Moves
New York Data Center	56	0
Los Angeles Data Center	23	7
North Carolina Data Center	56	23
Nashville Data Center	52	9
	187	39

☒ Remember previously selected Customer

< Back

Next >

Cancel

From:

<https://rtfm.tapetrack.com/> - **TapeTrack Documentation**

Permanent link:

https://rtfm.tapetrack.com/lite/function_library_management?rev=1498830926

Last update:

2025/01/21 22:07

