

# Library Management

The TapeTrack Lite Library Management function allows you to manage individual libraries.

## Library Management Process

### Select Library Management

Select Library Management from the Library Management Task's drop-down menu.

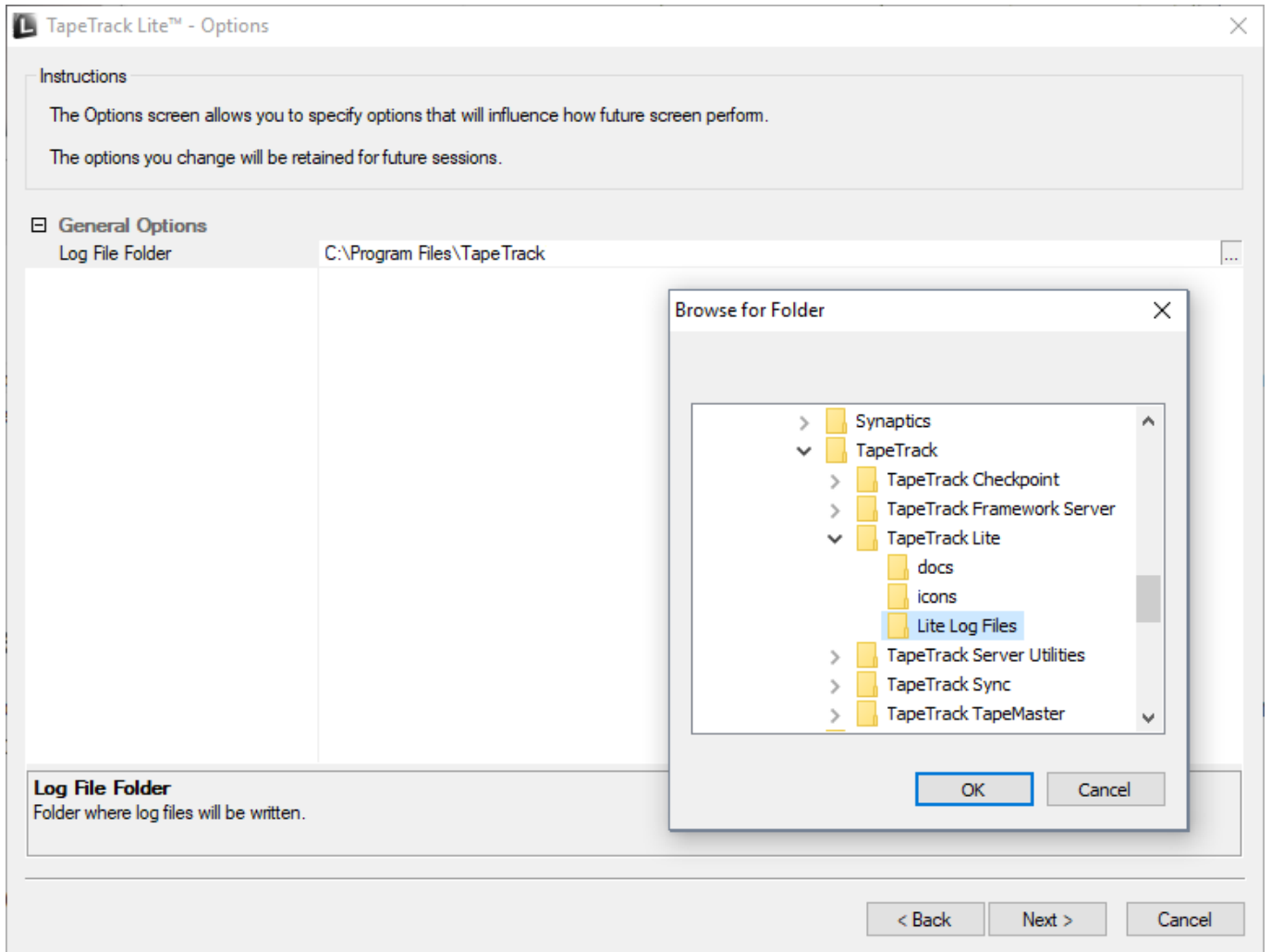


### Options

This will open the **Options** window. If required you can set the location for the log files to be written to, or leave the default.

To change the default directory, click in the field to the right of the Log File Folder, click on the more options button (...). From the **Browse For File** window select the preferred directory and click OK.

Click Next to continue.



Click Next button to continue.

## Customer Selection

Select the [Customer](#) that you want to manage [Volumes](#) for by double-clicking the [Customer-ID](#) or left-clicking the [Customer-ID](#) and clicking Next at the bottom of the page.



## Media Selection

Select the **Media** to manage **Volumes** by double-clicking the required **Media** or by selecting the **Media** and clicking Next



## Repository Selection

Select the repository to manage by double-clicking the required repository or by selecting the repository type and clicking Next



## Volume Management

The volume management window displays volume and repository information including required moves to maintain the set level of scratch volumes.

Clicking execute will effect the displayed moves to manage the selected repository's management requirements. Closing this window will take you to the move list.

Repository Management: Library

**Metrics**

**Repository**

Capacity	193
In Use	187
Incoming	7
Outgoing	1
Net	193
Free Space	0

**Scratch**

Requirement	15
In Repository	11
Deficit	4

**Extras**

Free Space	0
Scratch Volumes	0

**Calculations**

Scratch (incoming)	4
Ejects (outgoing)	4

**Targets**

Repository	Offsite Vault
Bypass Ejects	False

Repository Target for ejects

**Proposed Scratch Volumes to be entered**

Volume	Current Repository	Last Move	Next Move	Expiry	Last Write
000018L6	Scratch Rack	2017-06-30	Permanent	Permanent	Never
000019L6	Scratch Rack	2017-06-30	Permanent	Permanent	Never
000020L6	Scratch Rack	2017-06-30	Permanent	Permanent	Never
000021L6	Scratch Rack	2017-06-30	Permanent	Permanent	Never

List contains 4 records

**Proposed Non-Scratch Volumes to be ejected**

Volume	Current Repository	Last Move	Next Move	Expiry	Last Write
000120L6	Library	Never	Permanent	Permanent	Never
CONT201	Library	Never	Permanent	Permanent	Never
000178L6	Library	Never	Permanent	Permanent	Never
000177L6	Library	Never	Permanent	Permanent	Never

List contains 4 records

Selected=1 First Selected=2

Execute Cancel

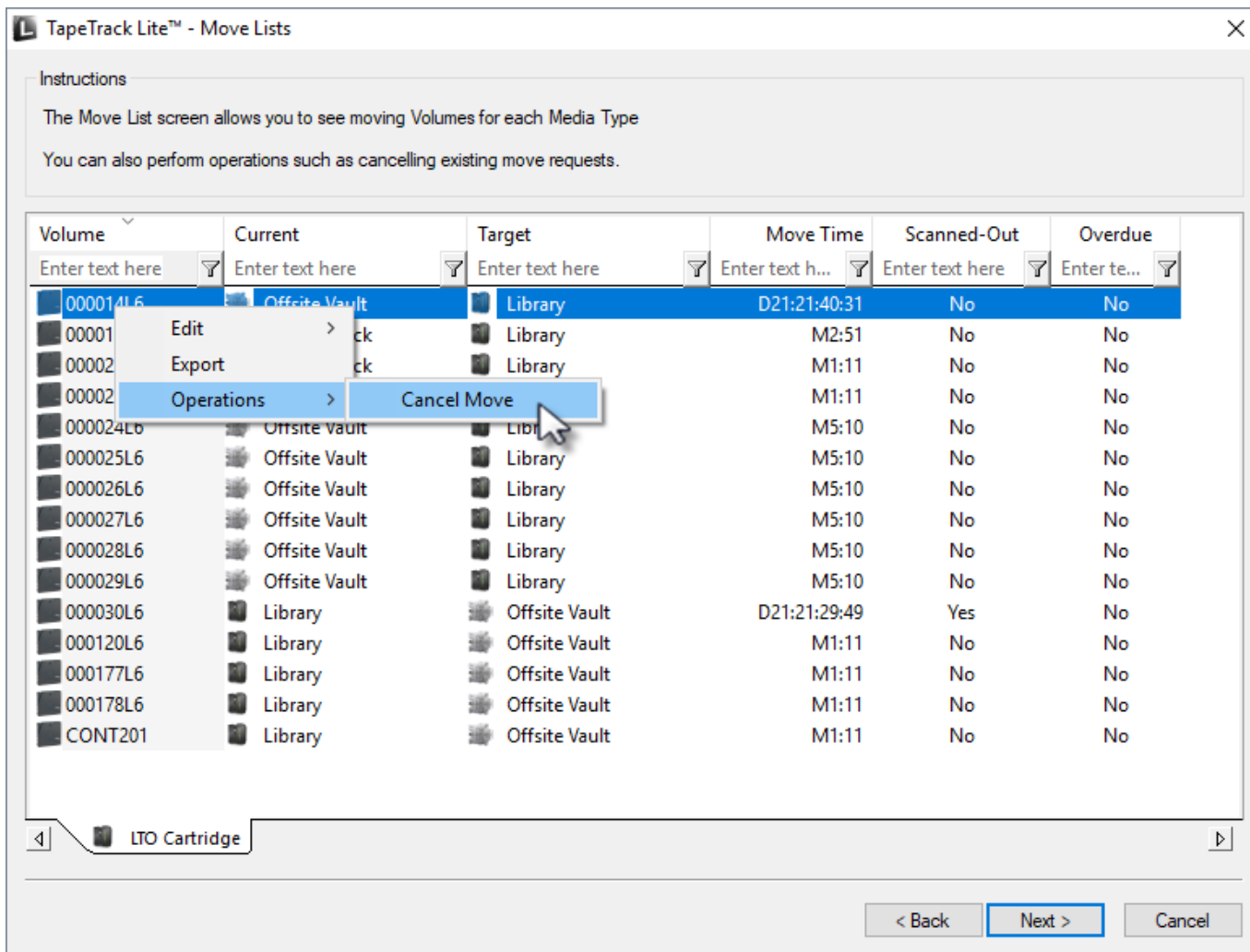
**Notes:**

- **A** Repository usage statistics.
- **B** Repository scratch requirements.
- **C** Free slots and current scratch volumes in repository.
- **D** Movement calculations required to hit scratch volume targets.
- **E** Target repository (required) for ejected tapes.
- **F** Volumes selected to move into repository.
- **G** Volumes to be ejected to create enough space for incoming volumes.

**Move List**

The move list displays all tapes currently in a move status including volume ID, current and target location, elapsed move time, scanned out status and whether the volume is overdue at its intended target.

Volumes can have their move revoked or canceled by right-clicking selected volumes and choosing Operations → Cancel Move



## Complete

This will bring up the Complete window, from here you can

- Click Finish, Cancel or X to exit TapeTrack Lite
- Click Back to return to start menu and select another task
- Click View Log File to view the log
- Click Print Log File to print out log file for further reference
- Click About this Software to view product and support (email, phone & website) information



From:  
<https://rtfm.tapetrack.com/> - **TapeTrack Documentation**

Permanent link:  
[https://rtfm.tapetrack.com/lite/function\\_library\\_management?rev=1543967707](https://rtfm.tapetrack.com/lite/function_library_management?rev=1543967707)

Last update: **2025/01/21 22:07**

