

Library Management

The TapeTrack Lite Library Management function allows you to manage individual libraries.

Library Management Process

Select Library Management

Select Library Management from the Library Management Task's drop-down menu.

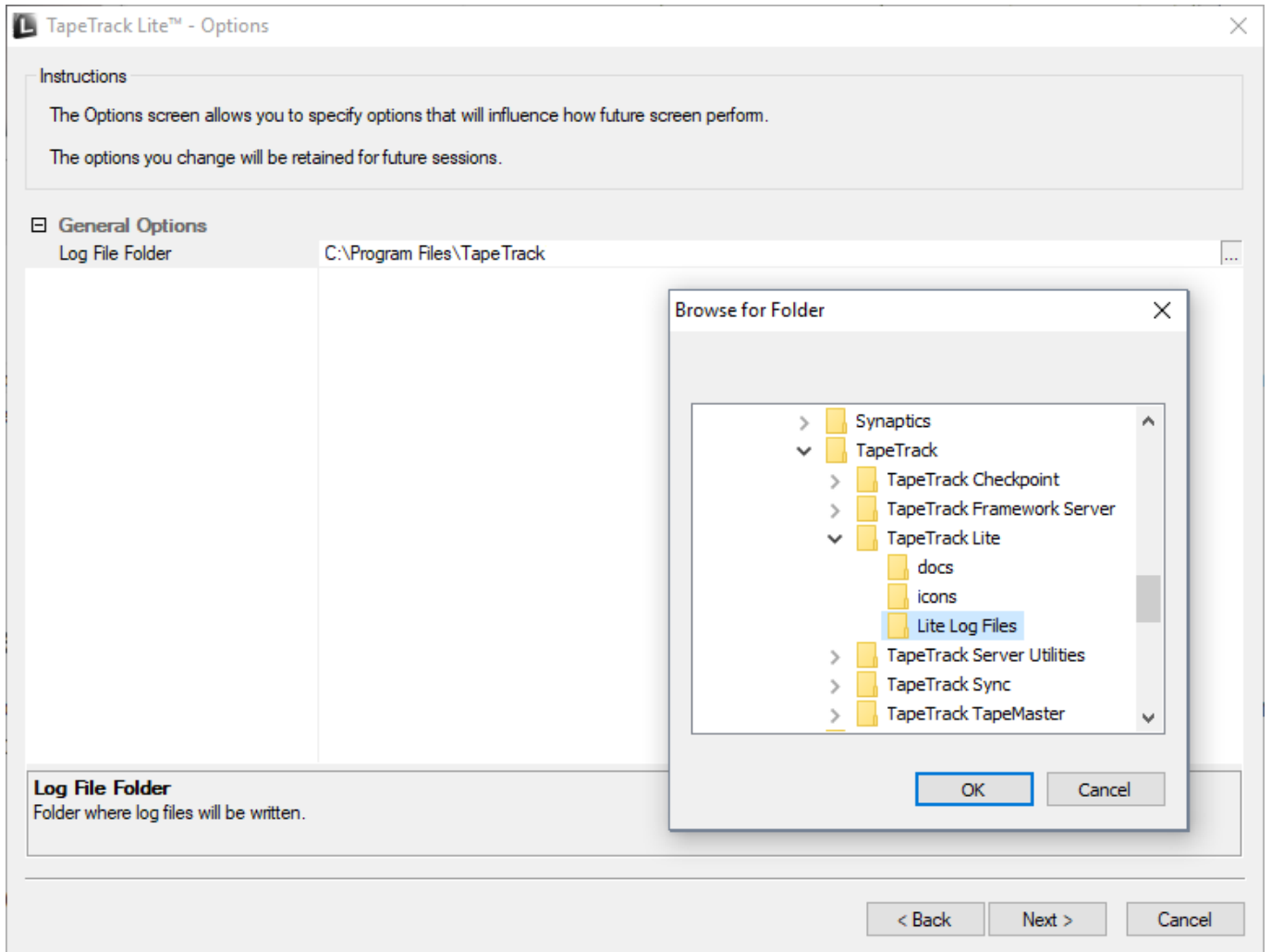


Options

This will open the **Options** window. If required you can set the location for the log files to be written to, or leave the default.

To change the default directory, click in the field to the right of the Log File Folder, click on the more options button (...). From the **Browse For File** window select the preferred directory and click OK.

Click Next to continue.



Click Next button to continue.

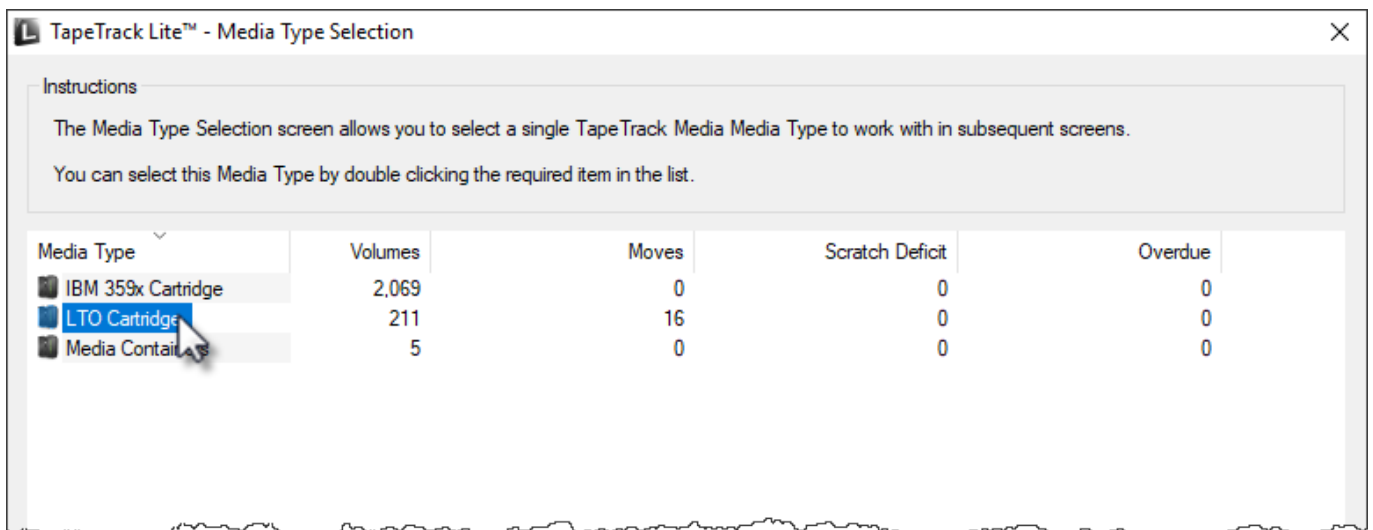
Customer Selection

Select the [Customer](#) that you want to manage [Volumes](#) for by double-clicking the [Customer-ID](#) or left-clicking the [Customer-ID](#) and clicking Next at the bottom of the page.



Media Selection

Select the **Media** to manage **Volumes** by double-clicking the required **Media** or by selecting the **Media** and clicking Next



Repository Selection

Select the [Repository](#) to manage by double-clicking the required [Repository](#) or by selecting the [Repository](#) and clicking Next



Volume Management

The **Volume Management** window displays [Volume](#) and [Repository](#) information including required moves to maintain the set level of scratch [Volumes](#).

Clicking execute will effect the displayed moves to manage the selected [Repository's](#) management requirements.

Closing this window by clicking the X at the top right to continue to the move list.

The screenshot shows the 'Repository Management: Library' window. On the left, there are several sections: 'Metrics' (Repository: Capacity 193, In Use 187, Incoming 7, Outgoing 1, Net 193, Free Space 0; Scratch: Requirement 15, In Repository 11, Deficit 4), 'Extras' (Free Space 0, Scratch Volumes 0), 'Calculations' (Scratch (incoming) 4, Ejects (outgoing) 4), and 'Targets' (Repository: Offsite Vault, Bypass Ejects: False). The main area is divided into two tables. The top table, 'Proposed Scratch Volumes to be entered', lists four volumes (000018L6, 000019L6, 000020L6, 000021L6) all currently in 'Scratch Rack' with a last move of 2017-06-30 and permanent expiry. The bottom table, 'Proposed Non-Scratch Volumes to be ejected', lists four volumes (000120L6, CONT201, 000178L6, 000177L6) currently in 'Library' with a last move of 'Never' and permanent expiry. At the bottom right, there are 'Execute' and 'Cancel' buttons, and status indicators for 'Selected=1' and 'First Selected=2'.

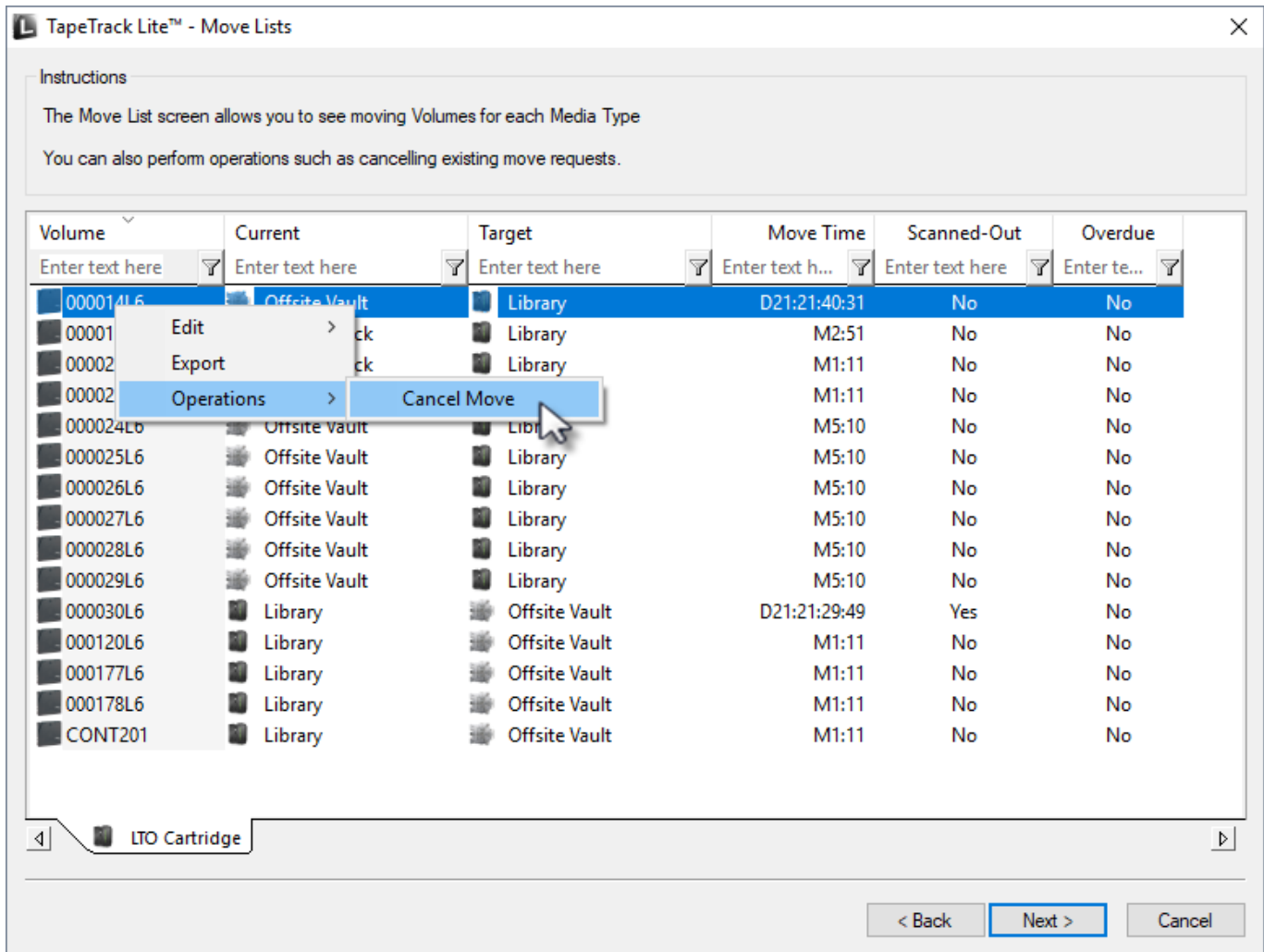
Notes:

- **A Repository** usage statistics.
- **B Repository** scratch requirements.
- **C** Free slots and current scratch **Volumes** in repository.
- **D** Movement calculations required to hit scratch **Repository** targets.
- **E** Target **Repository** (required) for ejected tapes.
- **F Volumes** selected to move into repository.
- **G Volumes** to be ejected to create enough space for incoming volumes.

Move List

The **Move list** window displays all **Volumes** currently in a move status including **Volume-ID**, current and target location, elapsed move time, scanned out status and whether the **Volume** is overdue at its intended target **Repository**.

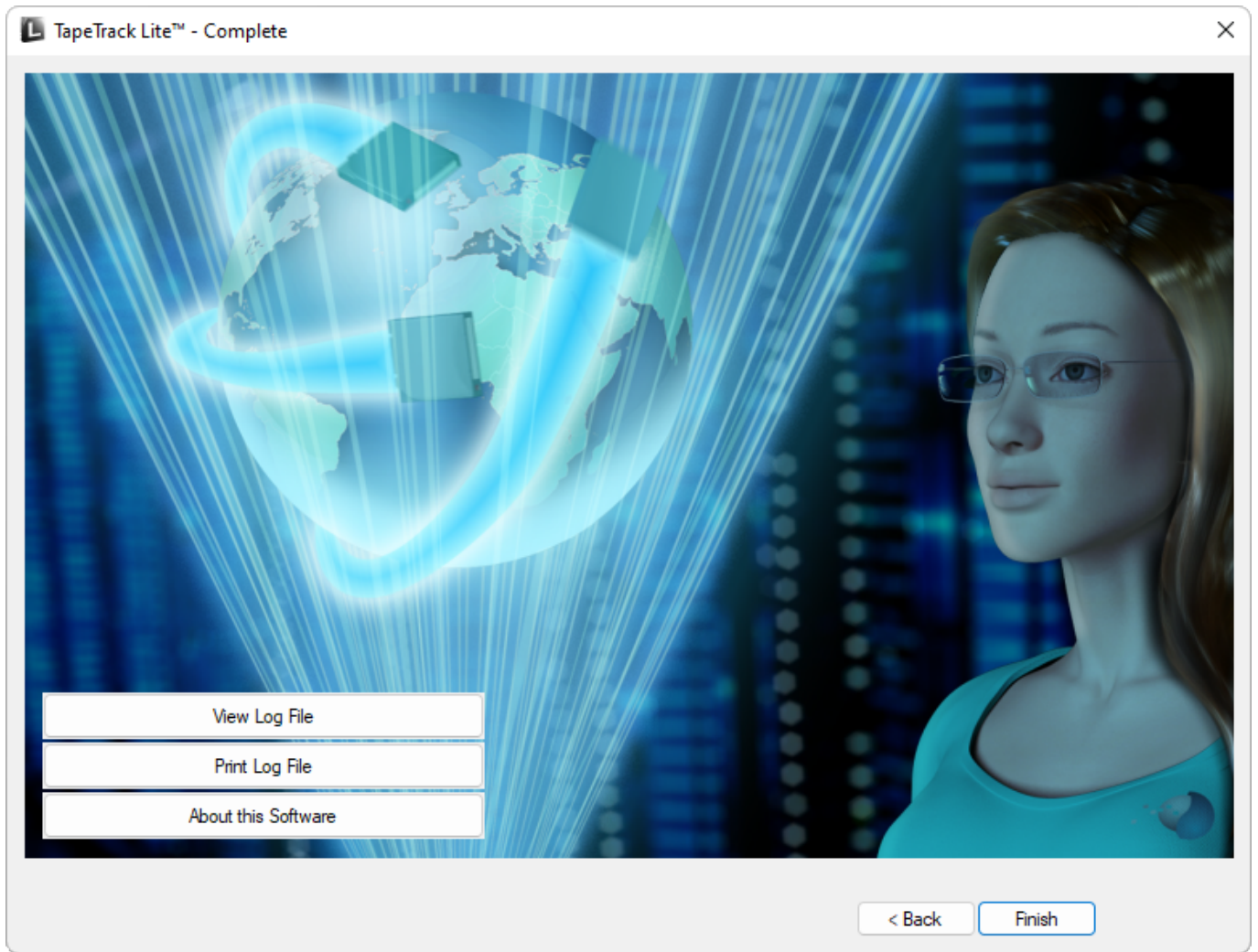
Volumes can have their move revoked or canceled by right-clicking highlighted **Volumes** and selecting **Operations** → **Cancel Move**



Complete

This will bring up the **Complete** window, from here you can:

- Click View Log File to view the log.
- Click Print Log File to print out the log file for further reference.
- Click About this Software to view product and support (email, phone & website) information.
- Click Back to return to start menu and select another task.
- Click Finish, Cancel or X to exit TapeTrack Lite.



From:
<https://rtfm.tapetrack.com/> - **TapeTrack Documentation**

Permanent link:
https://rtfm.tapetrack.com/lite/function_library_management?rev=1543972242

Last update: **2025/01/21 22:07**

