

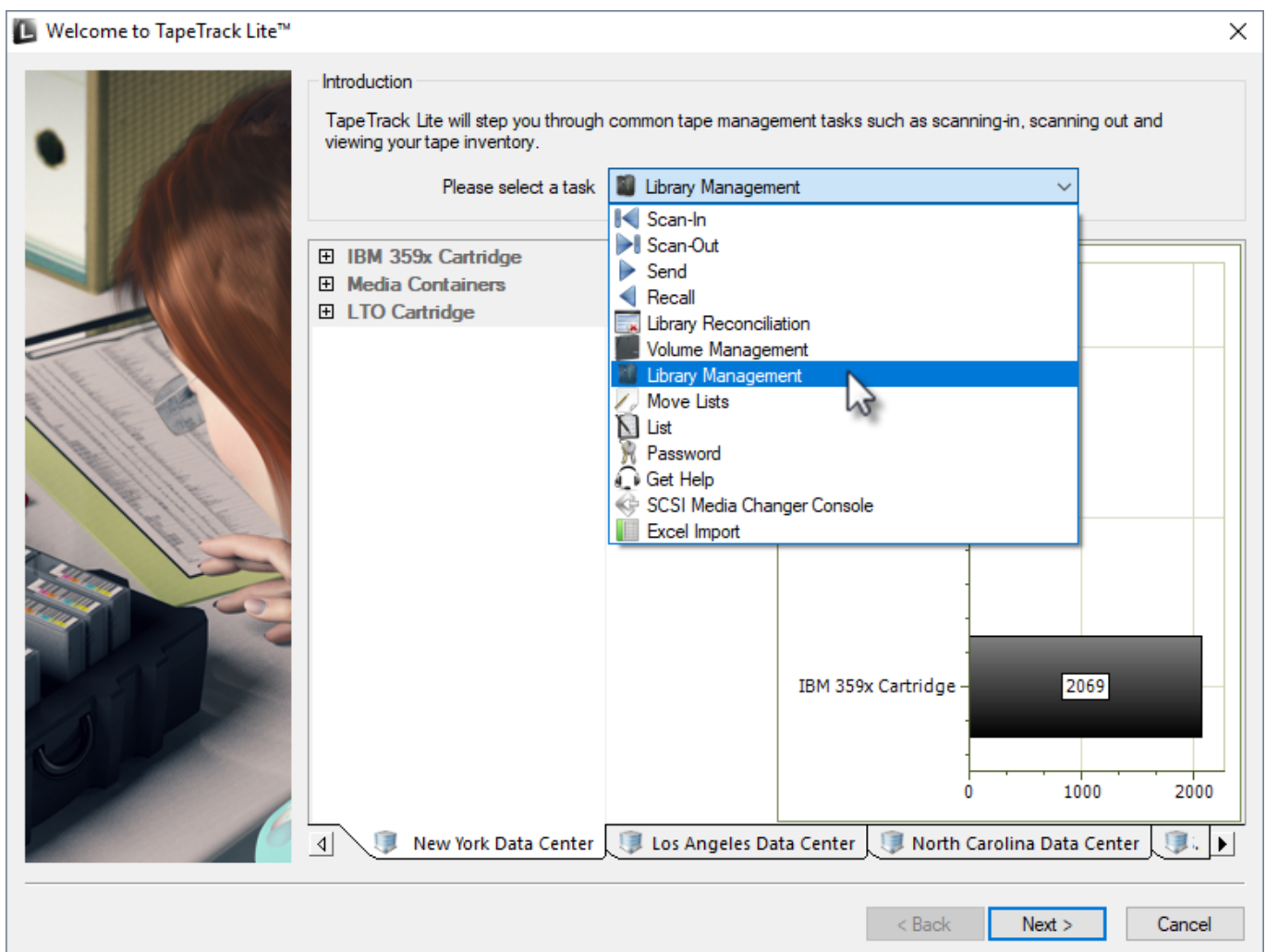
Library Management

The Library Management function allows you to manage individual libraries and the volumes contained within them.

Library Management Process

Select Library Management

Select Library Management from the drop-down task menu and click Next to continue.



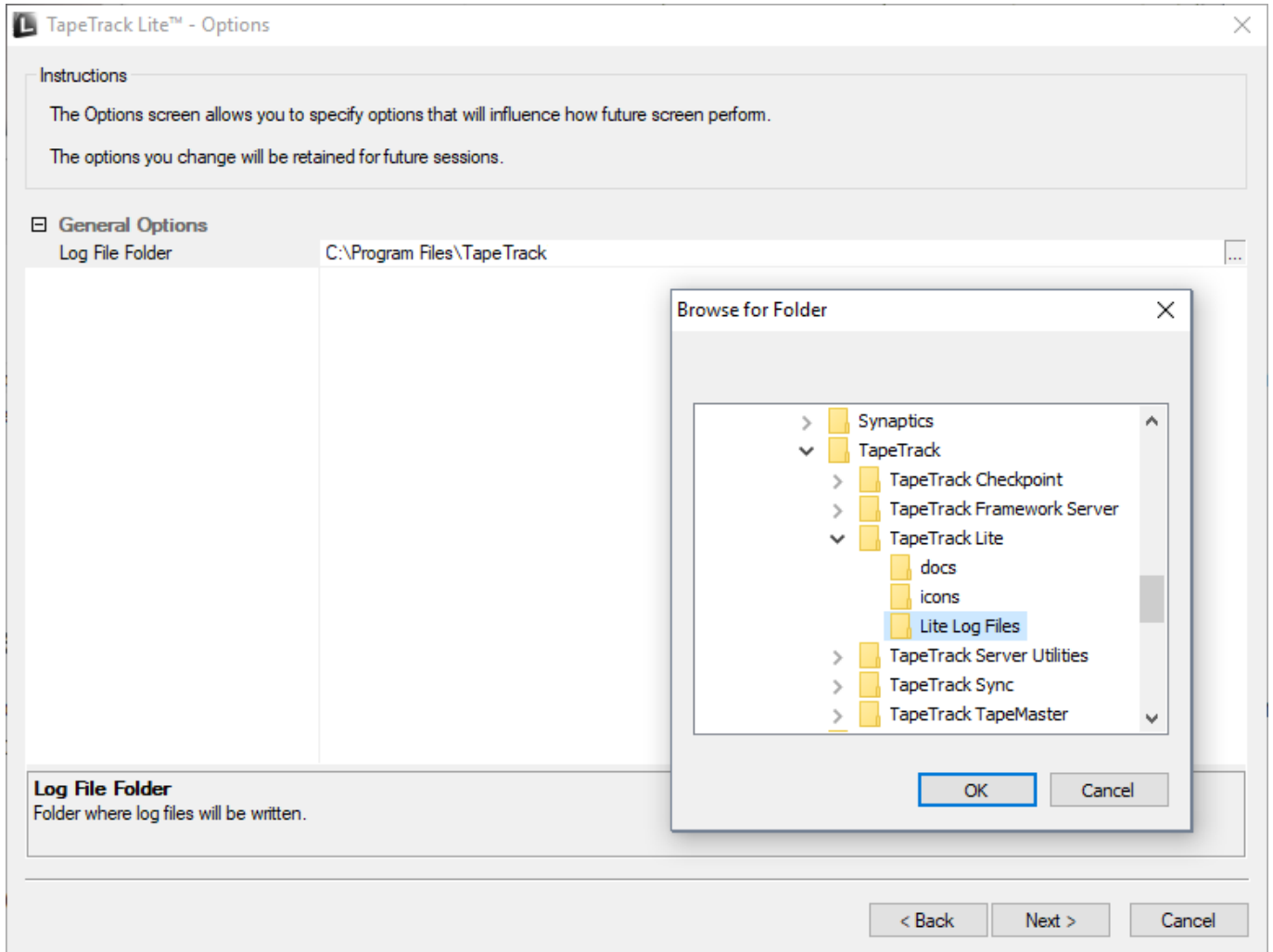
Options

This will open the **Options** window. If required you can set the location for the log files to be written to, or leave the default.

To change the default directory, click in the field to the right of the Log File Folder, click on the more options button (...). From the **Browse For File** window select the preferred directory and click

OK.

Click Next to continue.



Customer Selection

Select the [Customer](#) that you want to manage [Volumes](#) for by double-clicking the [Customer-ID](#) or left-clicking the [Customer-ID](#) and clicking Next at the bottom of the page.



Media Selection

Select the **Media** to manage **Volumes** by double-clicking the required **Media** or by selecting the **Media** and clicking Next



Repository Selection

Select the [Repository](#) to manage by double-clicking the required [Repository](#) or by selecting the [Repository](#) and clicking Next



Volume Management

The **Volume Management** window displays [Volume](#) and [Repository](#) information including required moves to maintain the set level of scratch [Volumes](#).

Clicking Execute will effect the displayed moves to manage the selected [Repository's](#) management requirements and take you to the **Move Lists** window..

if you don't wish to execute the move command, the **Volume Management** window can be closed by clicking the X at the top right to continue to the **Move list** window..

The screenshot shows the 'Repository Management: Library' window. On the left, there are several sections: 'Metrics' (Repository: Capacity 193, In Use 187, Incoming 7, Outgoing 1, Net 193, Free Space 0; Scratch: Requirement 15, In Repository 11, Deficit 4; Extras: Free Space 0, Scratch Volumes 0; Calculations: Scratch (incoming) 4, Ejects (outgoing) 4; Targets: Repository Offsite Vault, Bypass Ejects False). The main area is divided into two tables: 'Proposed Scratch Volumes to be entered' (4 records) and 'Proposed Non-Scratch Volumes to be ejected' (4 records). The bottom right has 'Execute' and 'Cancel' buttons.

Volume	Current Repository	Last Move	Next Move	Expiry	Last Write
000018L6	Scratch Rack	2017-06-30	Permanent	Permanent	Never
000019L6	Scratch Rack	2017-06-30	Permanent	Permanent	Never
000020L6	Scratch Rack	2017-06-30	Permanent	Permanent	Never
000021L6	Scratch Rack	2017-06-30	Permanent	Permanent	Never

Volume	Current Repository	Last Move	Next Move	Expiry	Last Write
000120L6	Library	Never	Permanent	Permanent	Never
CONT201	Library	Never	Permanent	Permanent	Never
000178L6	Library	Never	Permanent	Permanent	Never
000177L6	Library	Never	Permanent	Permanent	Never

Notes:

- **A Repository** usage statistics.
- **B Repository** scratch requirements.
- **C** Free slots and current scratch **Volumes** in repository.
- **D** Movement calculations required to hit scratch **Repository** targets.
- **E** Target **Repository** (required) for ejected **Volumes**.
- **F Volumes** selected to move into the **Repository**.
- **G Volumes** to be ejected to create enough space for incoming **Volumes**.

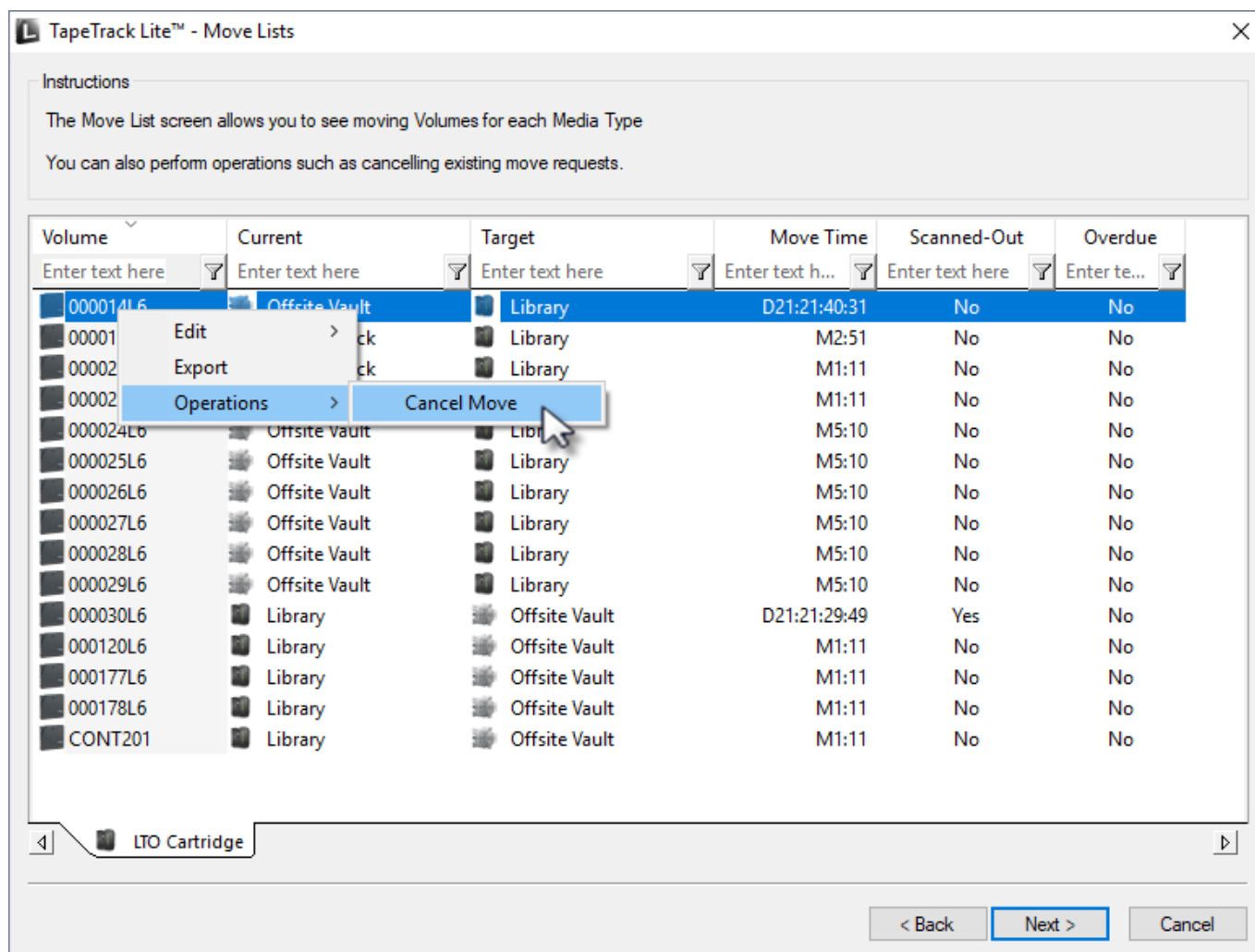
Move List

The **Move list** window displays all **Volumes** currently in a move status including **Volume-ID**, current and target location, elapsed move time, scanned out status and whether the **Volume** is overdue at its intended target **Repository**.

Move List Right Click Options

- **Edit**
 - **Copy:** **Volume-ID's** can be copied to the Windows clipboard by selecting the required **volumes** and right clicking the highlighted **Volume/s** and selecting Edit → Copy.
- **Export:** Reports can be exported by selecting the required **volumes** and right clicking the highlighted **Volume/s** and selecting Export.
- **Operations**
 - **Cancel Move:** **Volumes** can have their move revoked or canceled by right-clicking

highlighted **Volumes** and selecting Operations → Cancel Move



Complete

This will bring up the **Complete** window, from here you can:

- Click View Log File to view the log.
- Click Print Log File to print out the log file for further reference.
- Click About this Software to view product and support (email, phone & website) information.
- Click Back to return to start menu and select another task.
- Click Finish, Cancel or X to exit TapeTrack Lite.



From:
<https://rtfm.tapetrack.com/> - **TapeTrack Documentation**

Permanent link:
https://rtfm.tapetrack.com/lite/function_library_management?rev=1544569255

Last update: **2025/01/21 22:07**

