

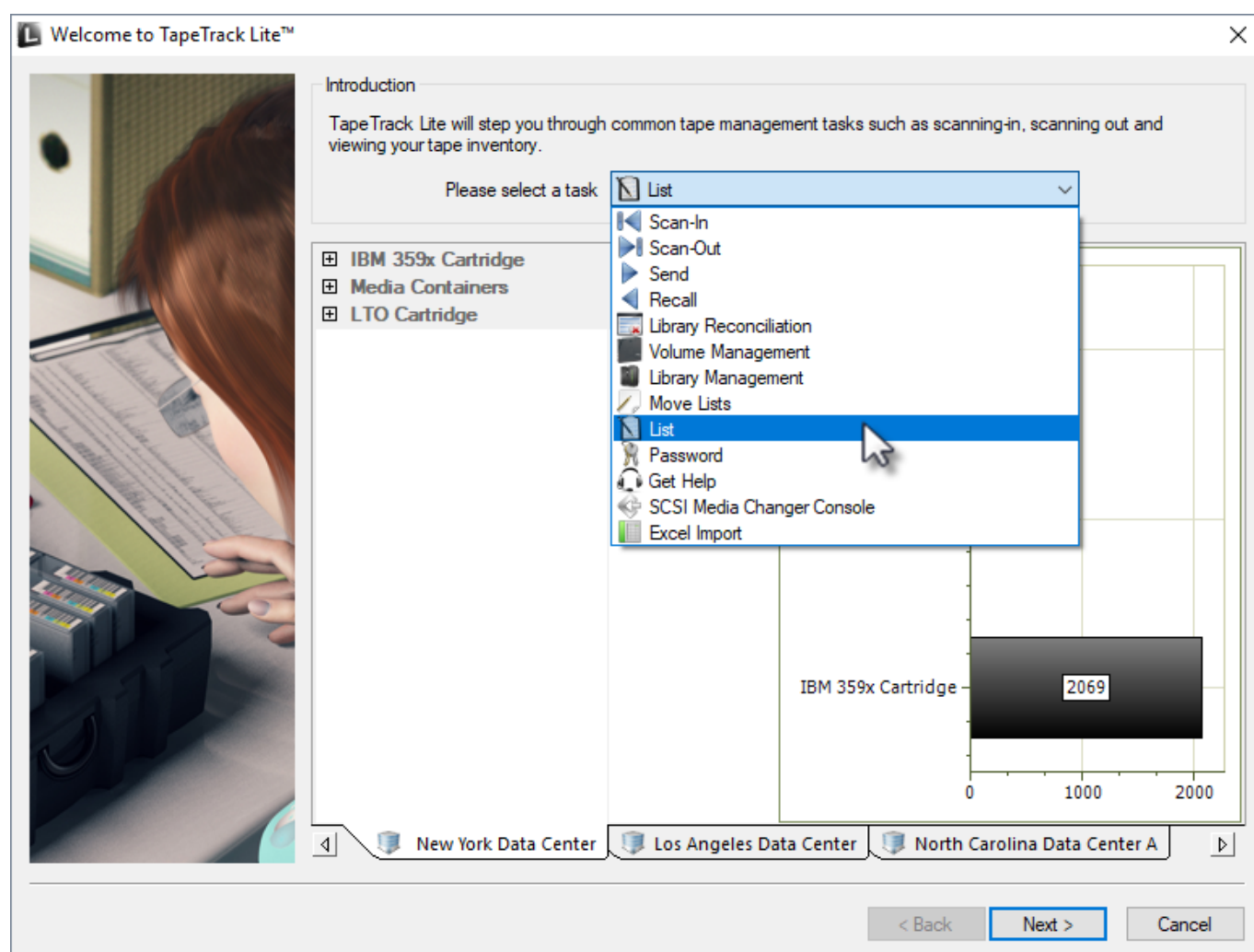
List

The List task allows you to build a list of volumes using a barcode scanner and then perform basic functions, such as adding tapes to your database or moving tapes to other repositories

List Process

Select List

Select **List** from the drop-down task menu and click **Next** to continue.



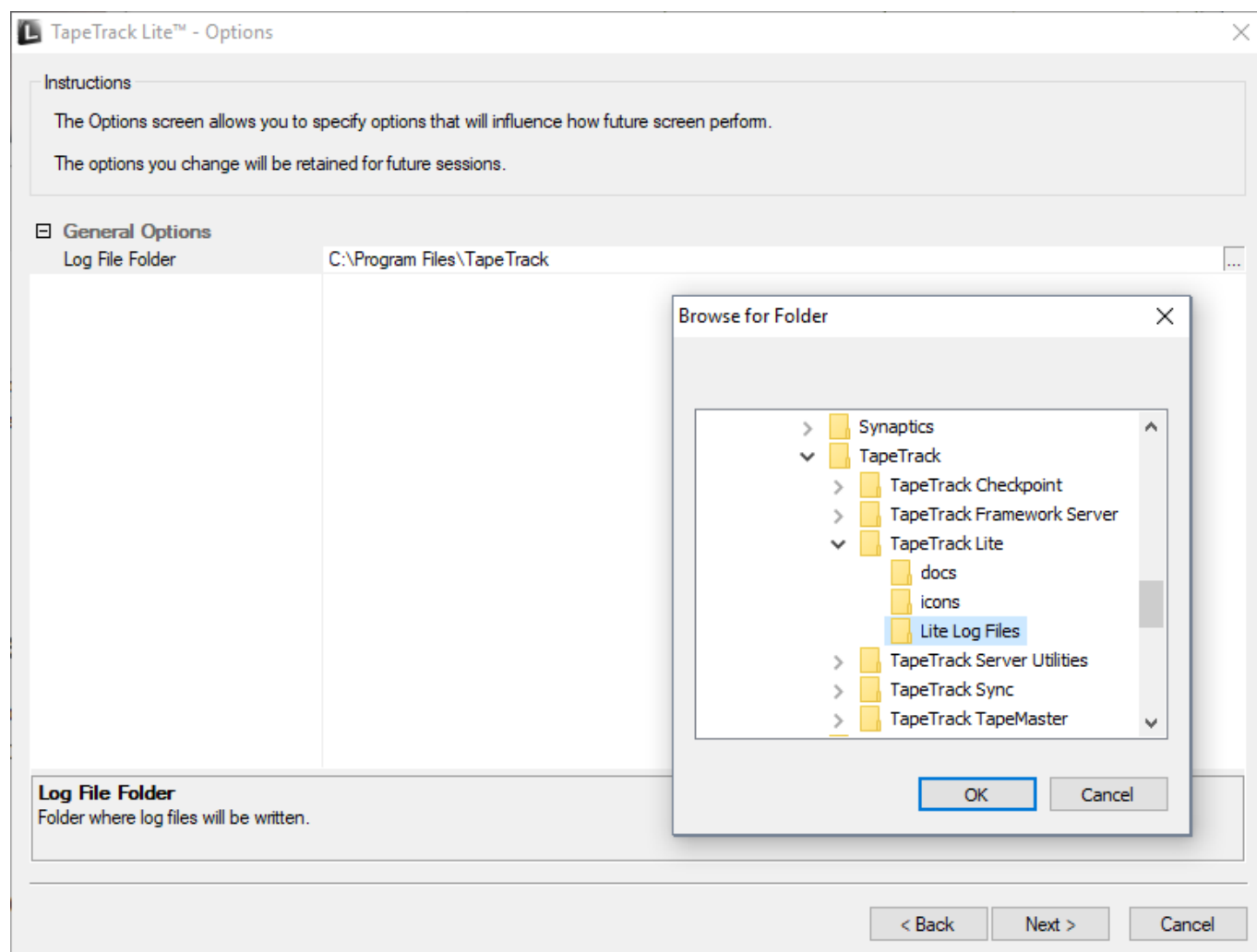
Set Options

This will open the **Options** window. If required you can set the location for the log files to be written to, or leave the default.

To change the default directory, click in the field to the right of the Log File Folder, click on the

more options button (...). From the **Browse For File** window select the preferred directory and click OK.

Click **Next** to continue.



Scanning in Volumes

Scan the required [Volume/s](#) using your preferred [scanning method](#).

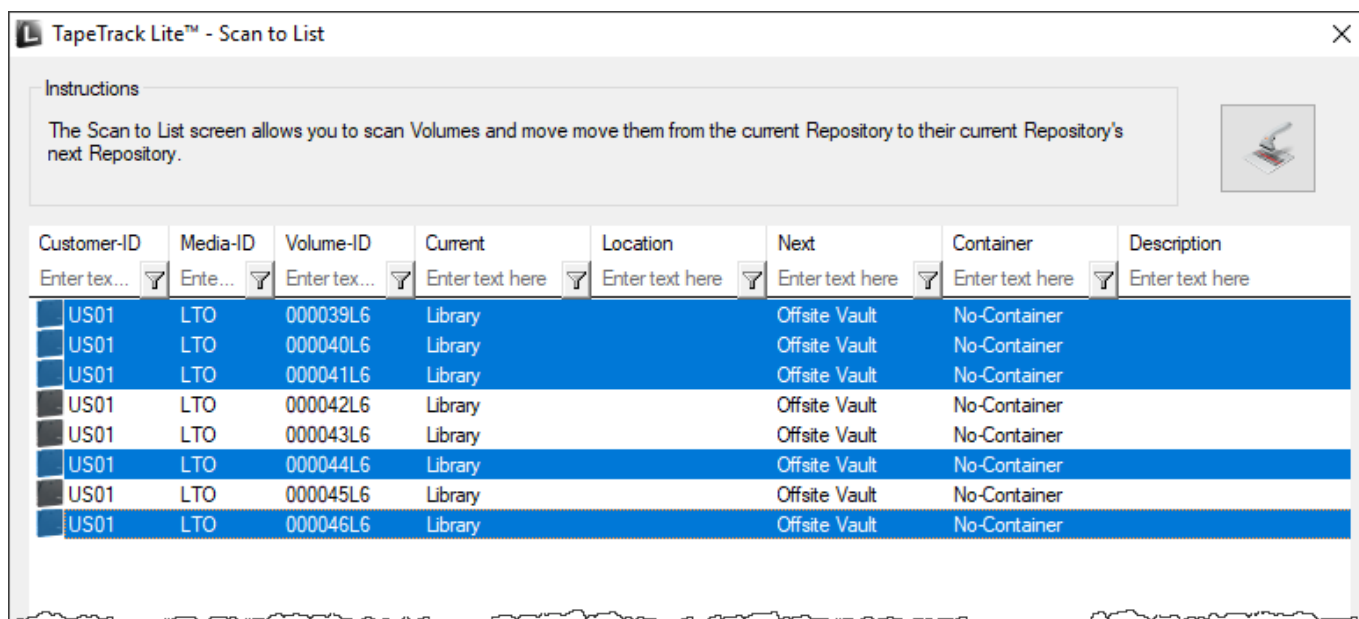
Once the [Volume/s](#) have been entered close the **List Volumes Input** window by clicking the X in the top right corner to return to the **Scan To List** window. The **List Volumes Input** window can be reopened if required to enter more volumes by pressing F10 or clicking the Scanner Icon at the top left of the **Scan To List** window.

Select Volumes

Select required [Volumes](#) by:

- Left-clicking to select one [Volume](#) at a time.
- Using control + click to select multiple [Volumes](#).

- Using shift + click to select a range of [Volumes](#).
- Right-clicking and selecting Select→Select All.
- Selecting [Volume/s](#) and then right-clicking and selecting Select→Invert selected.



List Right Click Options

Right click the highlighted [Volumes](#) and select from the menu options:

- **Add new Volumes to Database:** Adds any new [Volumes](#) to the TapeTrack database.
- **Confirm at the Next Repository:** [Volumes](#) will be moved, whether currently in a move status or not, to their [next repository](#) (based on next repository settings in TapeTrack TapeMaster) and confirmed.
- **Expand Container Contents:** Adds contents of Container to [Volume](#) list.
- **Export**
 - **To File:** Exports selected [Volumes](#) to text file. The report contains Customer ID, Media ID, [Volume-ID](#), Current Location, Next Location, Container, Description and Message.
 - **To Email:**
- **Refresh:** Refreshes the page to display the most up-to-date information. This can also be accomplished by pressing the F5 key.
- **Select**
 - **Invert Selection:** Inverts currently selected and non selected [Volumes](#).
 - **All:** Selects all [Volumes](#) in list.



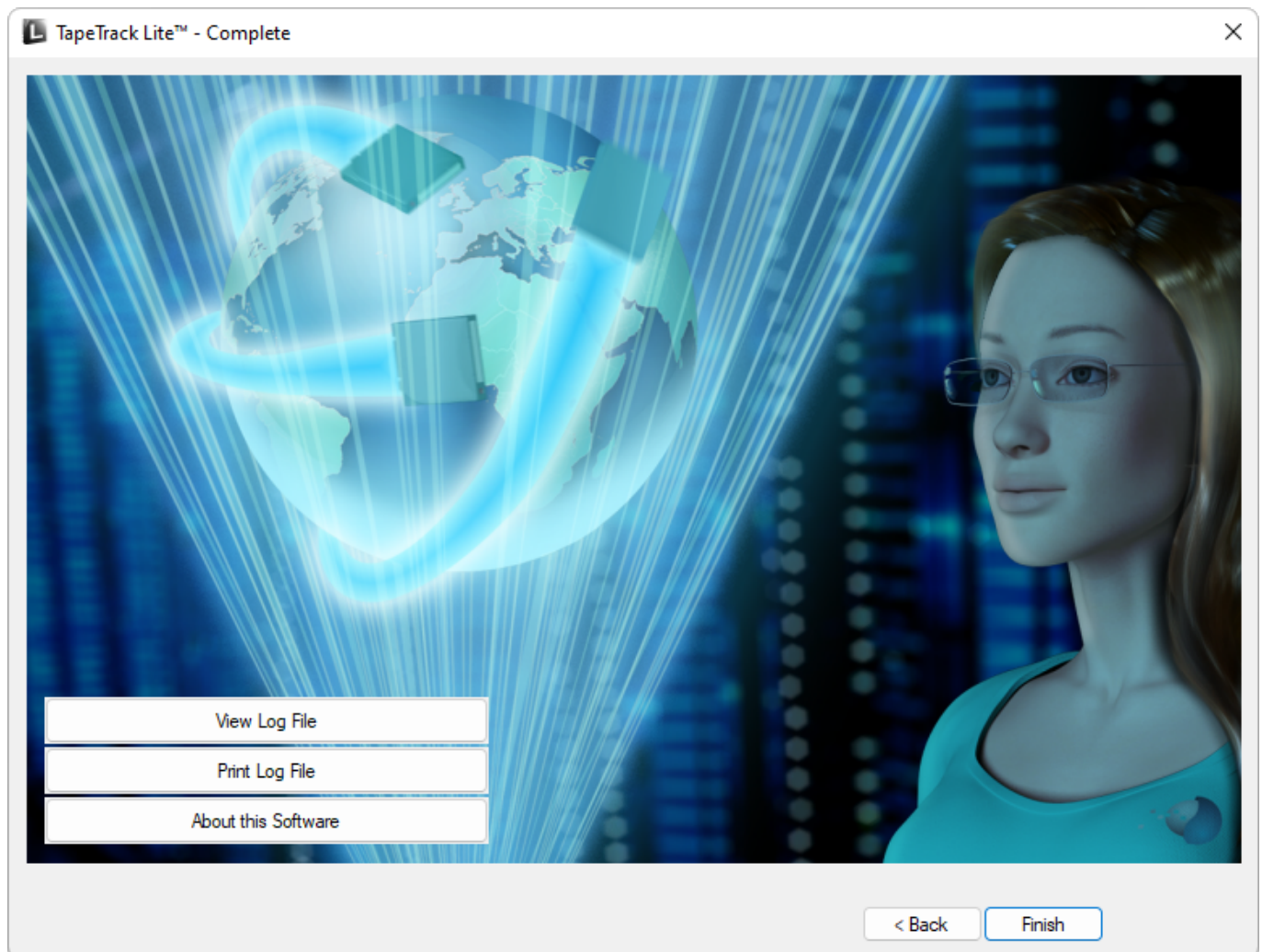
Clicking Ctrl + E will also open **Export** dialog to allow export to PDF, CSV, Excel, text or XML files

Click Next to continue.

Complete

This will bring up the **Complete** window, from here you can:

- Click View Log File to view the log.
- Click Print Log File to print out the log file for further reference.
- Click About this Software to view product and support (email, phone & website) information.
- Click Back to return to start menu and select another task.
- Click Finish, Cancel or X to exit TapeTrack Lite.



From:
<https://rtfm.tapetrack.com/> - **TapeTrack Documentation**

Permanent link:
https://rtfm.tapetrack.com/lite/function_list?rev=1544057365

Last update: **2025/01/21 22:07**

