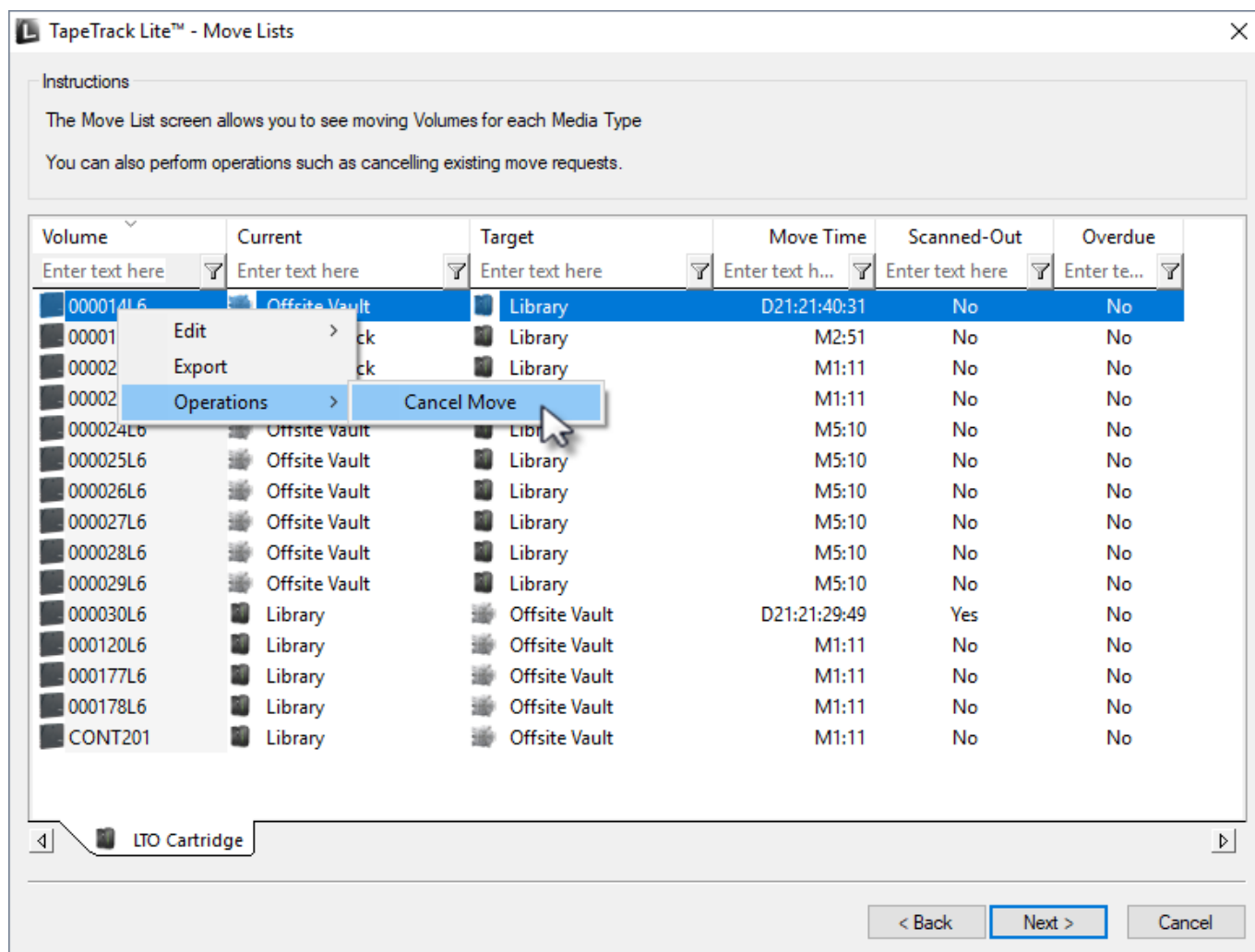


# Move Lists

The **Move list** window displays all **Volumes** currently in a move status including **Volume-ID**, current and target location, elapsed move time, scanned out status and whether the **Volume** is overdue at its intended target **Repository**.

## Move List Right Click Options

- **Edit**
  - **Copy:** **Volume-ID's** can be copied to the Windows clipboard by selecting the required **volumes** and right clicking the highlighted **Volume/s** and selecting **Edit** → **Copy**.
- **Export:** Reports can be exported by selecting the required **volumes** and right clicking the highlighted **Volume/s** and selecting **Export**.
- **Operations**
  - **Cancel Move:** **Volumes** can have their move revoked or canceled by right-clicking highlighted **Volumes** and selecting **Operations** → **Cancel Move**



From:

<https://rtfm.tapetrack.com/> - **TapeTrack Documentation**

Permanent link:

[https://rtfm.tapetrack.com/lite/function\\_move\\_lists?rev=1543975892](https://rtfm.tapetrack.com/lite/function_move_lists?rev=1543975892)

Last update: **2025/01/21 22:07**

