

Move Lists

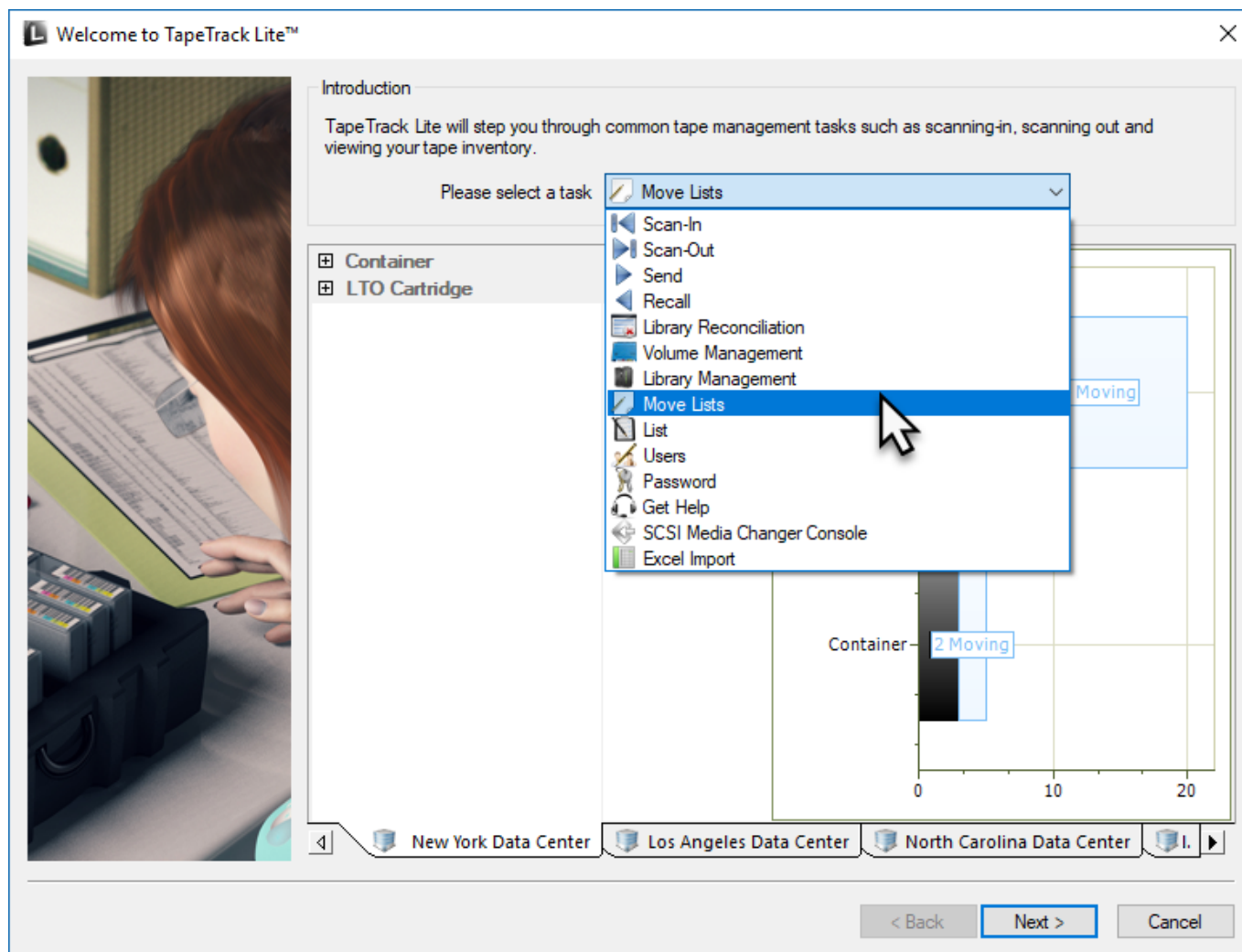
The TapeTrack Lite Move Lists function allows you to manage view moving **Volumes** for each **Media** type.

The **Move list** window displays all **Volumes** currently in a move status including **Volume-ID**, current and target location, elapsed move time, scanned out status and whether the **Volume** is overdue at its intended target **Repository**.

Move Lists Process

Select Move Lists

Select Move Lists from the drop-down task menu and click Next to continue.



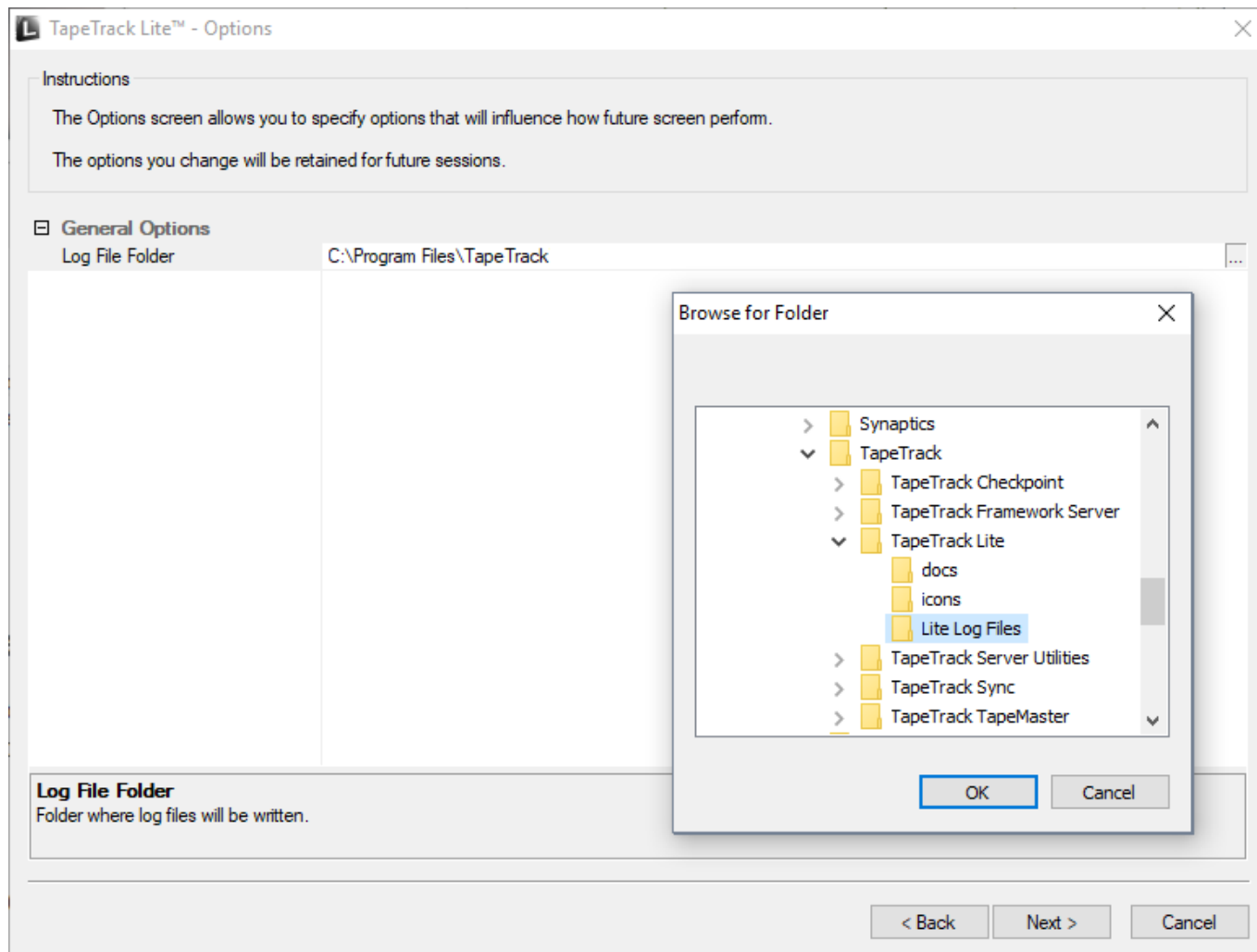
Options

This will open the **Options** window. If required you can set the location for the log files to be written

to, or leave the default.

To change the default directory, click in the field to the right of the Log File Folder, click on the more options button (...). From the **Browse For File** window select the preferred directory and click OK.

Click Next to continue.



Customer Selection

Select the [Customer](#) that you want to manage [Volumes](#) for by double-clicking the [Customer-ID](#) or left-clicking the [Customer-ID](#) and clicking Next at the bottom of the page.



Move List

The **Move Lists** window displays moving [Media](#) separated into tabs by [Media](#) type

Each **Move Lists** tab displays:

- [Volume-ID](#)
- Current [Repository](#)
- Target [Repository](#)
- Move Time
- Scanned-Out status
- Overdue status



Move List Right Click Options

- **Edit**
 - **Copy:** Volume-ID's can be copied to the Windows clipboard by selecting the required volumes and right clicking the highlighted Volume/s and selecting Edit → Copy.
- **Export:** Reports can be exported by selecting the required volumes and right clicking the highlighted Volume/s and selecting Export.
- **Operations**
 - **Cancel Move:** Volumes can have their move revoked or canceled by right-clicking highlighted Volumes and selecting Operations → Cancel Move and clicking OK to the **Failed Operations** window (warning shows because Volume/s are being moved back to current Repository without being confirmed at target Repository)

TapeTrack Lite™ - Move Lists

Instructions

The Move List screen allows you to see moving Volumes for each Media Type

You can also perform operations such as cancelling existing move requests.

Volume	Current	Target	Move Time	Scanned-Out	Overdue
000014L6	Offsite Vault	Library	D21:21:40:31	No	No
00001	Library	Library	M2:51	No	No
00002	Library	Library	M1:11	No	No
00002	Library	Library	M1:11	No	No
000024L6	Offsite vault	Libr	M5:10	No	No
000025L6	Offsite Vault	Library	M5:10	No	No
000026L6	Offsite Vault	Library	M5:10	No	No
000027L6	Offsite Vault	Library	M5:10	No	No
000028L6	Offsite Vault	Library	M5:10	No	No
000029L6	Offsite Vault	Library	M5:10	No	No
000030L6	Library	Offsite Vault	D21:21:29:49	Yes	No
000120L6	Library	Offsite Vault	M1:11	No	No
000177L6	Library	Offsite Vault	M1:11	No	No
000178L6	Library	Offsite Vault	M1:11	No	No
CONT201	Library	Offsite Vault	M1:11	No	No

LTO Cartridge

< Back Next > Cancel

From: <https://rtfm.tapetrack.com/> - **TapeTrack Documentation**

Permanent link: https://rtfm.tapetrack.com/lite/function_move_lists?rev=1543977929

Last update: **2025/01/21 22:07**

