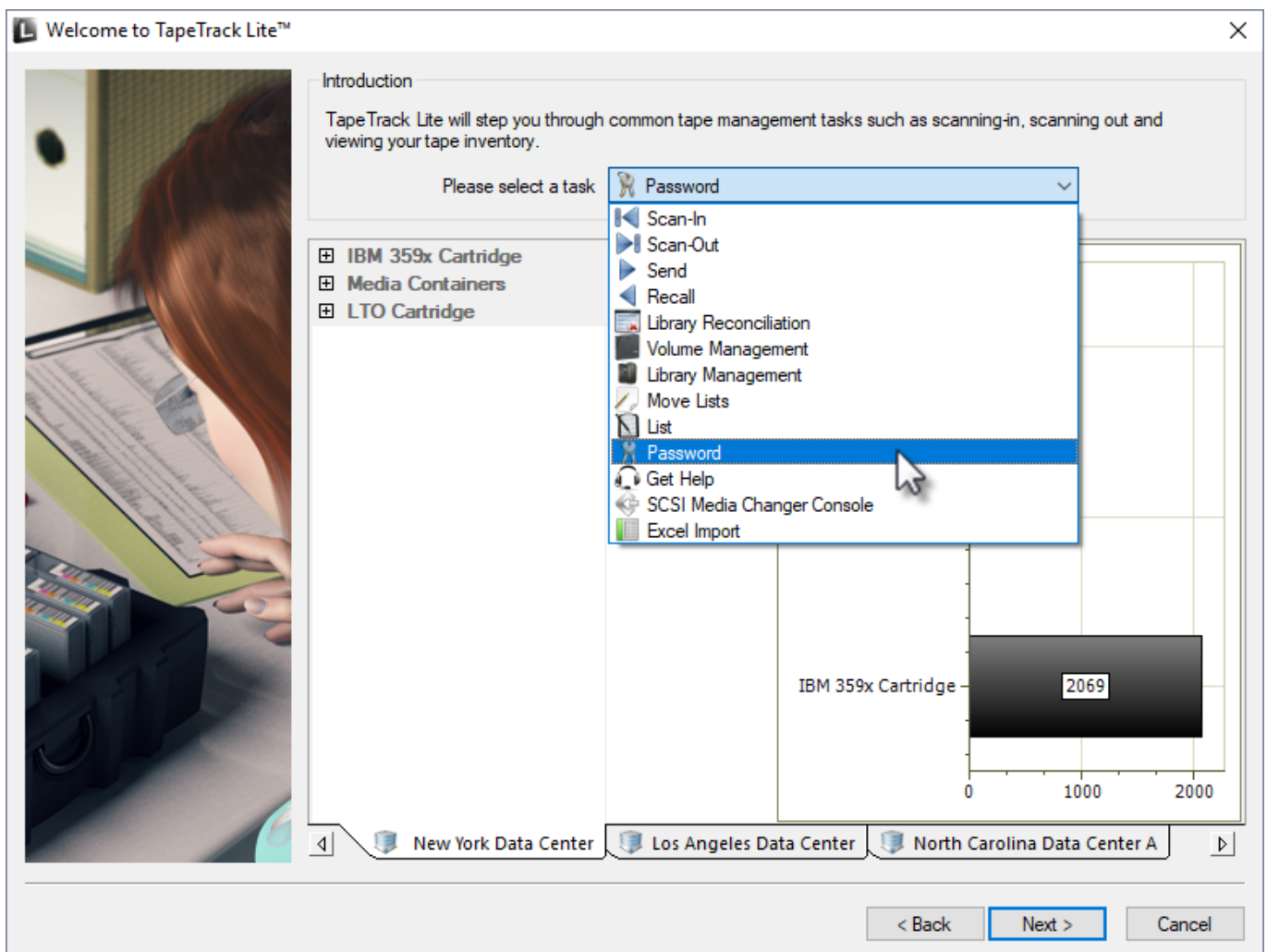


Password

The Password task allows you to change the password for the current user. To manage users for accounts other than the current user refer to the Users task selection.

Select Password

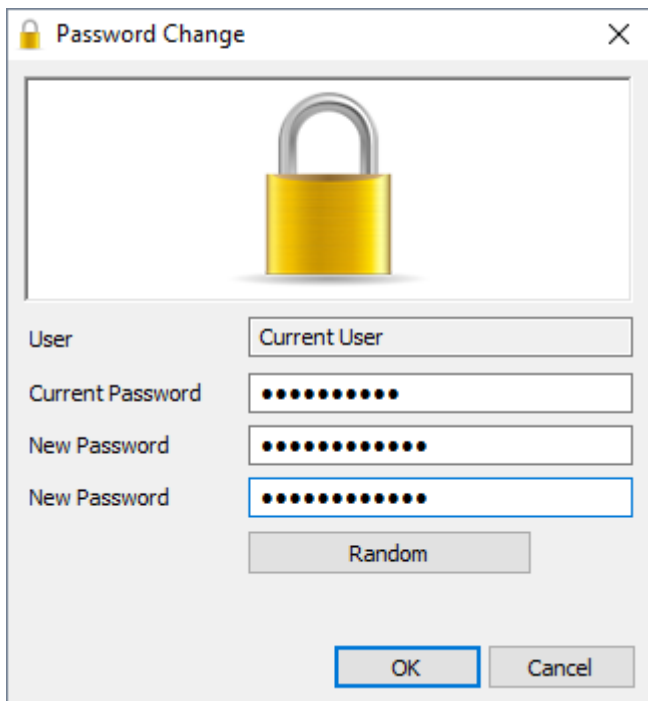
Once logged into TapeTrack Lite, select Password from the Library Management Task's drop-down menu.



Changing a password

In the Password change box, enter:

- your current password
- new password
- verify new password

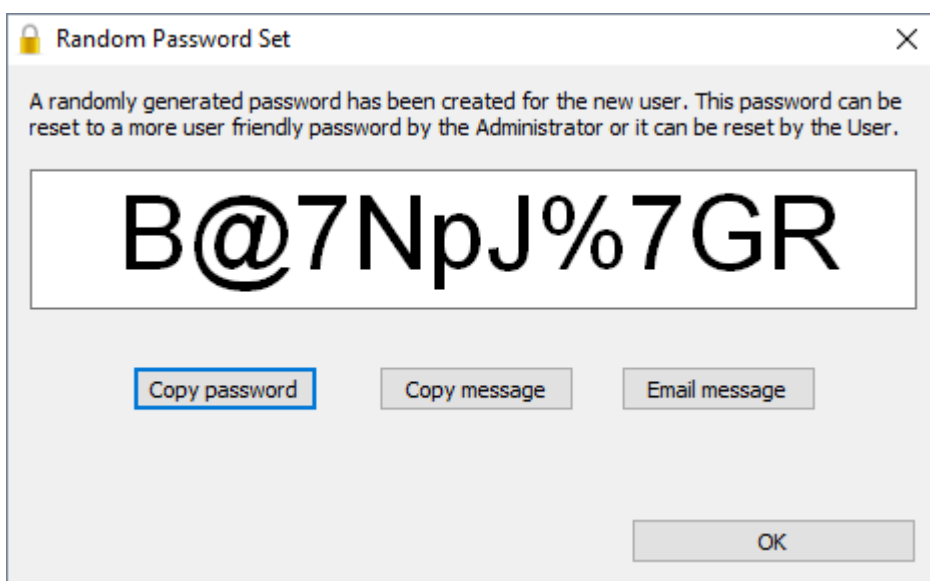


Click the Random button if you prefer a randomly generated password to be entered into the password fields. This password can be reset to a more user friendly password by the administrator or user.

Click the Copy password button to copy generated password to your clipboard.

Clicking the Copy message button will give you the text “ A new TapeTrack User-ID has been created for you to use. You can access this account using the User-ID (Current User) and the password(B@7NpJ%7GR)” copied to your clipboard for convenience when sending a message to the user with login details.

Clicking the Email message button will open up your default email client with the same text as Copy message.



Click OK to close window. When finished filling out the password fields click OK to update your password and return you to the TapeTrack Lite start screen.

Welcome to TapeTrack Lite™

Introduction
TapeTrack Lite will step you through common tape management tasks such as scanning-in, scanning out and viewing your tape inventory.

Please select a task

- IBM 359x Cartridge
- Media Containers
- LTO Cartridge

Category	Count
LTO Cartridge	20 Moving
Media Containers	5
IBM 359x Cartridge	2069

New York Data Center | Los Angeles Data Center | North Carolina Data Center A

< Back | Next > | Cancel

From:
<https://rtfm.tapetrack.com/> - **TapeTrack Documentation**

Permanent link:
https://rtfm.tapetrack.com/lite/function_password?rev=1510250640

Last update: **2025/01/21 22:07**

