

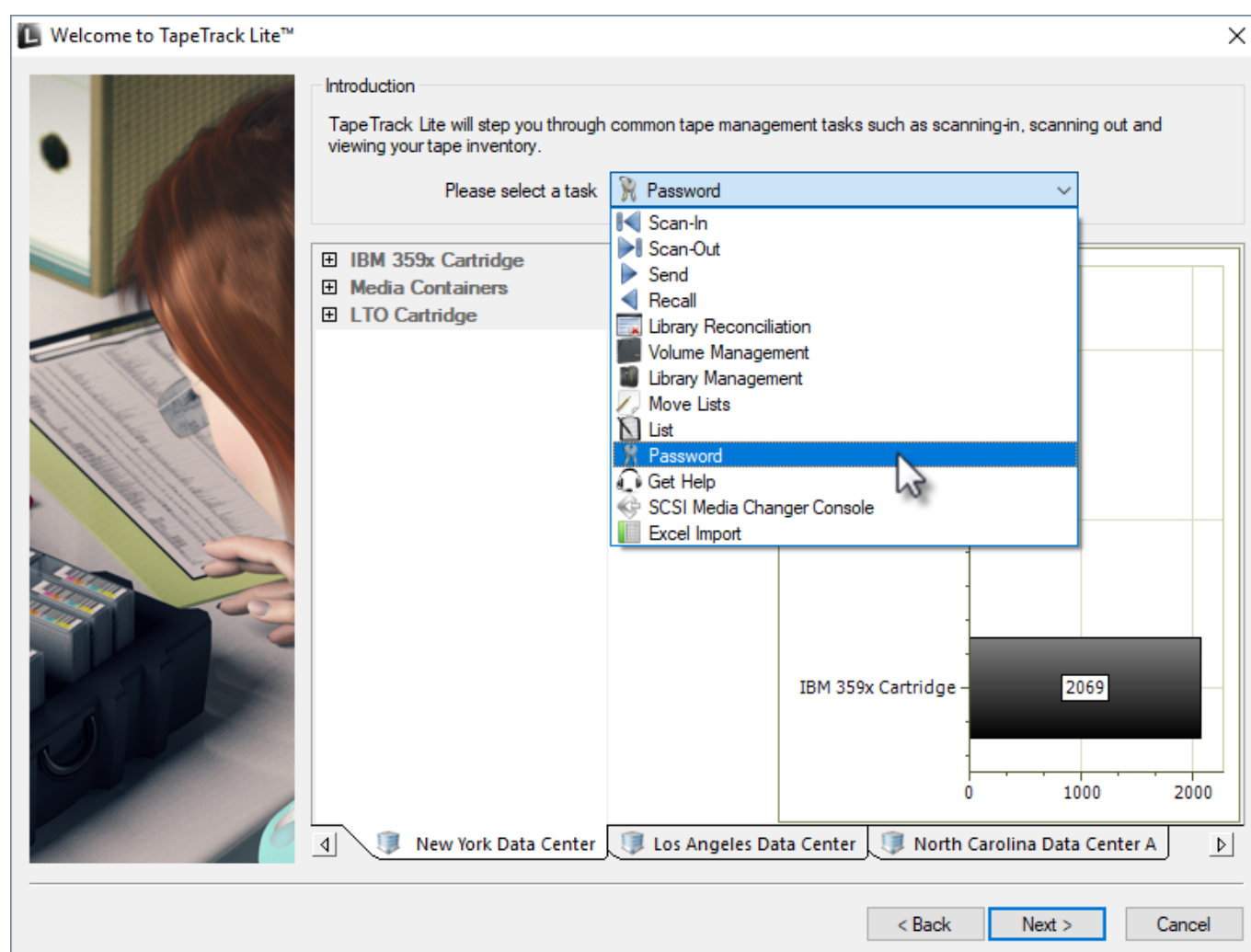
Password

The Password task allows you to change the password for the current user. To manage users for accounts other than the current user refer to the Users task selection.

Password Process

Select Password

Select Password from the drop-down task menu and click Next to continue.



Changing a password

In the Password change box, enter:

- your current password
- new password
- verify new password



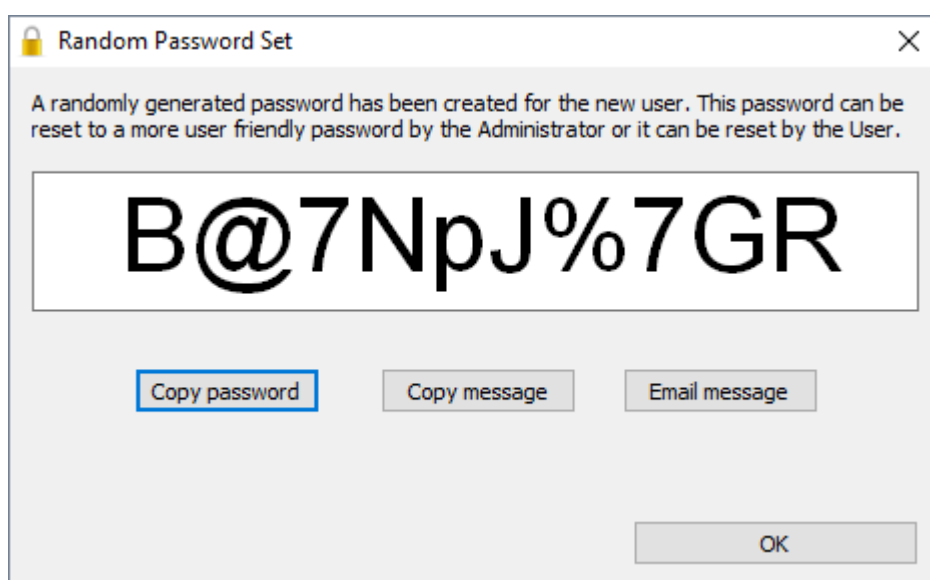
A dialog box titled "Password Change" with a yellow padlock icon. It contains four password input fields: "User" (with "Current User" text), "Current Password", "New Password", and a second "New Password" field. A "Random" button is located below the second "New Password" field. "OK" and "Cancel" buttons are at the bottom.

Click the Random button if you prefer a randomly generated password to be entered into the password fields. This password can be reset to a more user friendly password by the administrator or user.

Click the Copy password button to copy generated password to your clipboard.

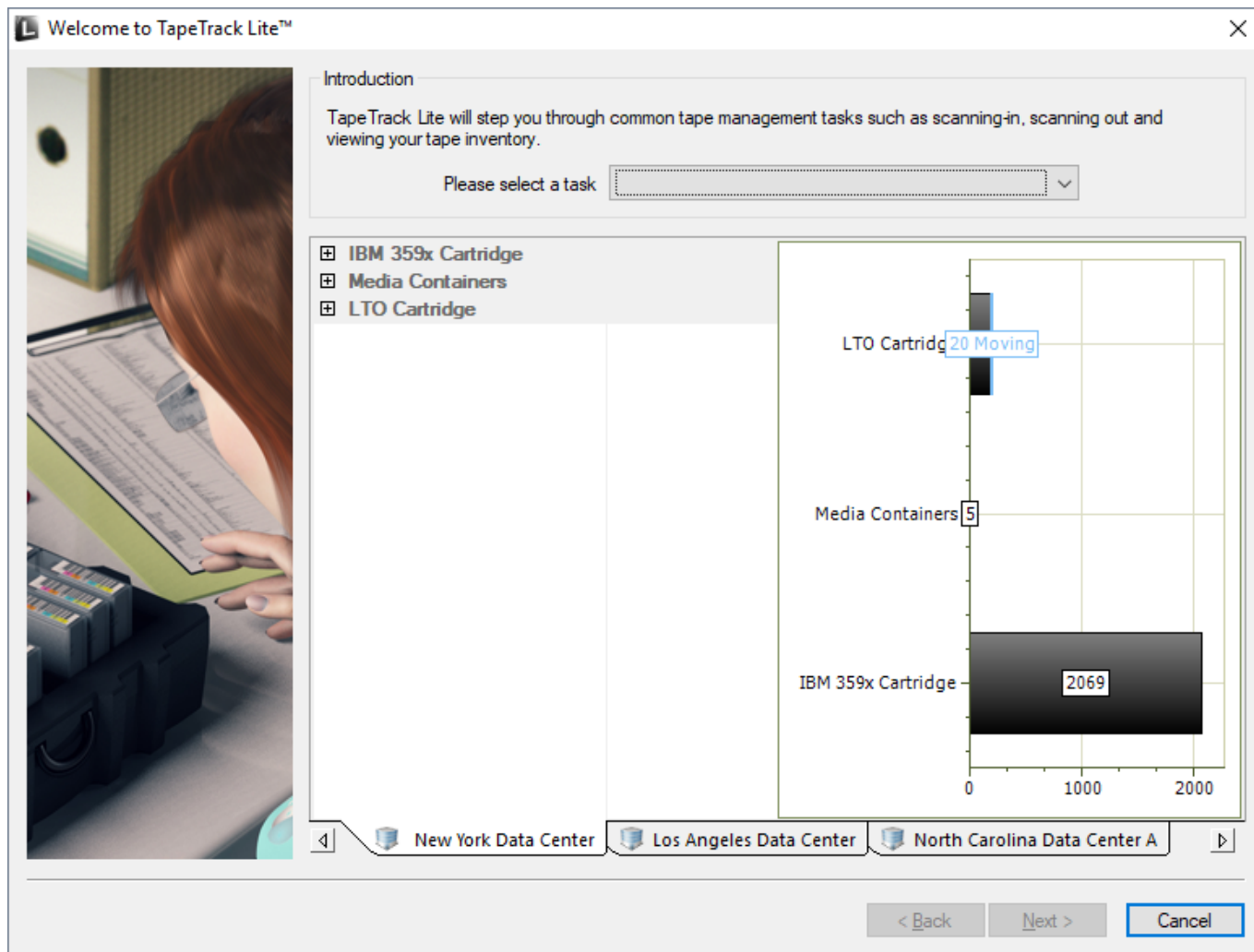
Clicking the Copy message button will give you the text " A new TapeTrack User-ID has been created for you to use. You can access this account using the User-ID (Current User) and the password(B@7NpJ%7GR)" copied to your clipboard for convenience when sending a message to the user with login details.

Clicking the Email message button will open up your default email client with the same text as Copy message.



A dialog box titled "Random Password Set" with a yellow padlock icon. It contains a message: "A randomly generated password has been created for the new user. This password can be reset to a more user friendly password by the Administrator or it can be reset by the User." Below the message is a large text box displaying the password "B@7NpJ%7GR". At the bottom are three buttons: "Copy password", "Copy message", and "Email message". An "OK" button is at the bottom right.

Click OK to close window. When finished filling out the password fields click OK to update your password and return you to the TapeTrack Lite start screen.



From:

<https://rtfm.tapetrack.com/> - TapeTrack Documentation

Permanent link:

https://rtfm.tapetrack.com/lite/function_password?rev=1544058214

Last update: 2025/01/21 22:07

