

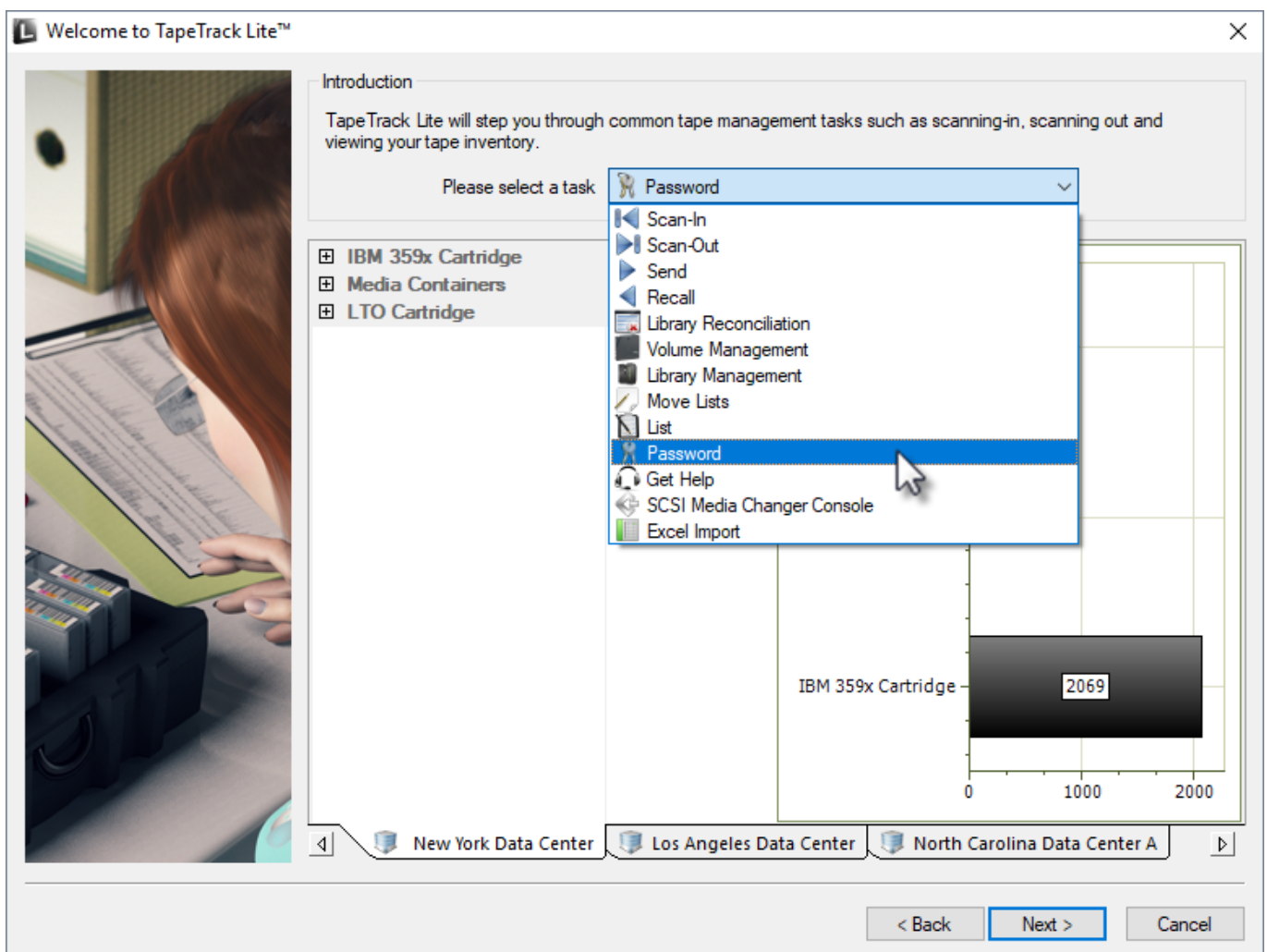
Password

The Password task allows you to change the password for the current user. To manage users for accounts other than the current user refer to the Users task selection.

Password Process

Select Password

Select Password from the drop-down task menu and click Next to continue.



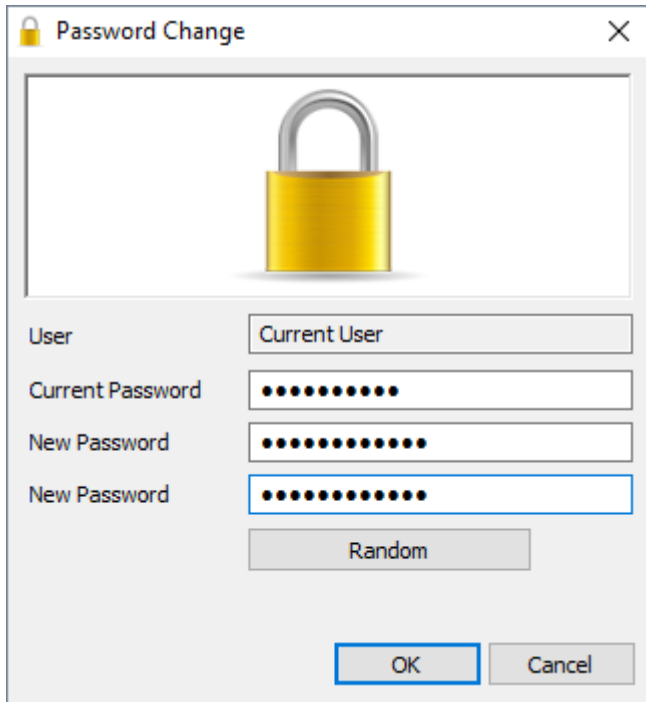
Changing a password

Setting Your Own Password

In the **Password change** window, enter:

- your current password

- new password
- verify new password



Click OK to update your password and return you to the TapeTrack Lite start screen.

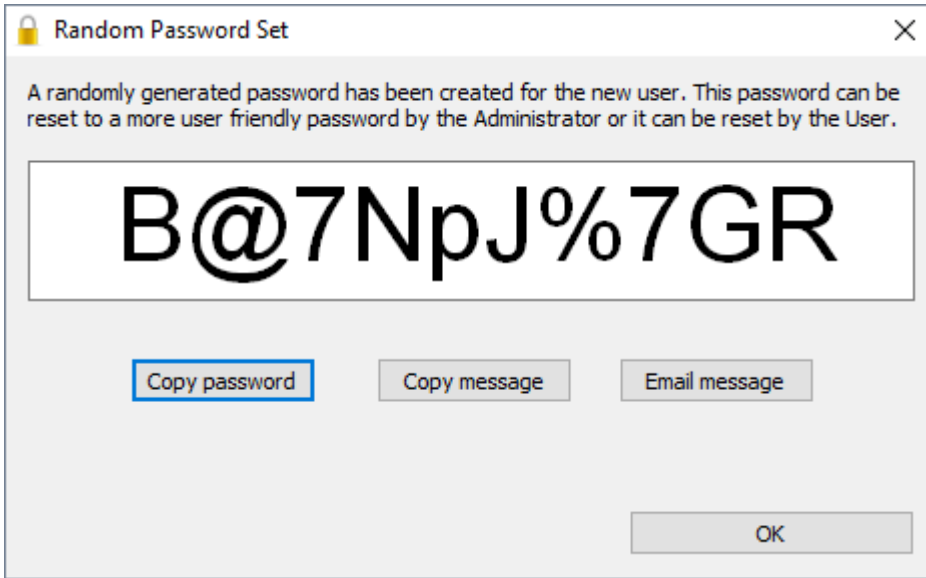
Randomly Generate Password

Click the Random button if you prefer a randomly generated password to be entered into the password fields.

Click the Copy password button to copy generated password to your clipboard.

Clicking the Copy message button will give you the text “ A new TapeTrack User-ID has been created for you to use. You can access this account using the User-ID (Current User) and the password(B@7Npj%7GR)” copied to your clipboard for convenience when sending a message to the user with login details.

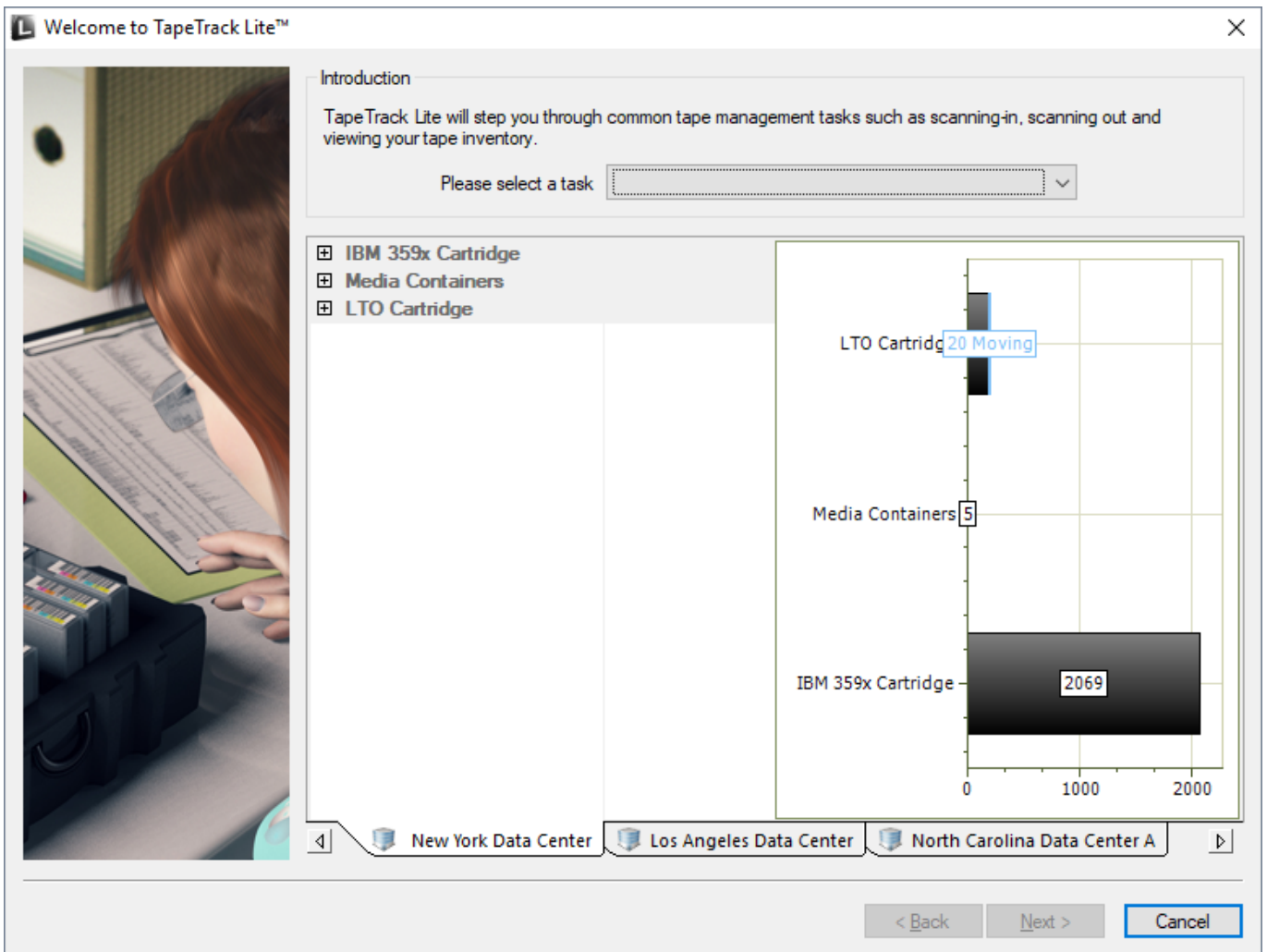
Clicking the Email message button will open up your default email client with the same text as Copy message.



Click OK to close window.

Enter your current password in the Current Password field.

Click OK to update your password and return you to the TapeTrack Lite start screen.



From:
<https://rtfm.tapetrack.com/> - **TapeTrack Documentation**

Permanent link:
https://rtfm.tapetrack.com/lite/function_password?rev=1544143128

Last update: **2025/01/21 22:07**

