

Recall

The Recall task allows you to request [Media](#) back from another [Repository](#), such as your offsite vendor or remote storage facility.

Recall Process

Select Recall

Select Recall from the **Task Menu** and click Next to continue.

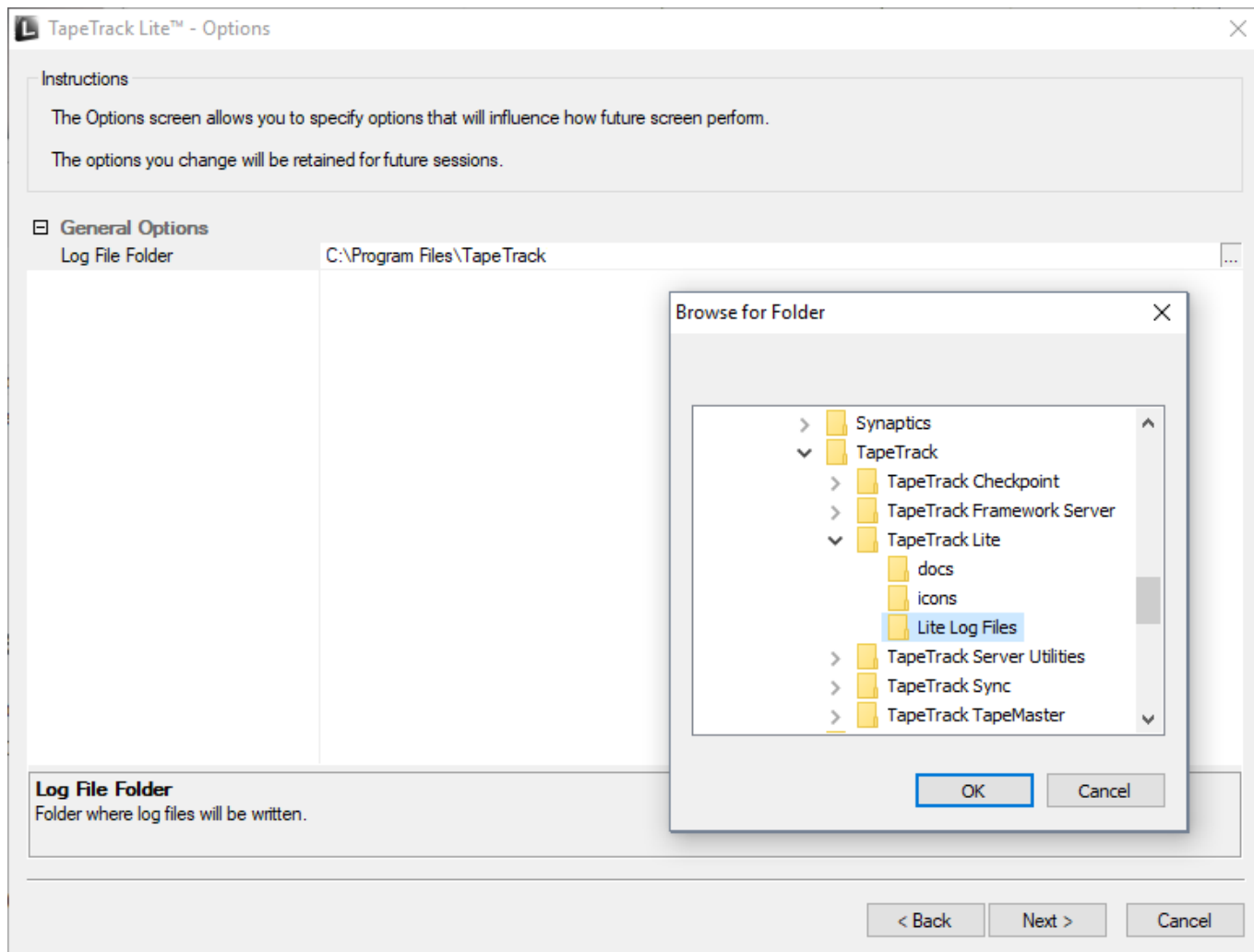


Options

This will open the **Options** window. If required you can set the location for the log files to be written to, or leave the default.

To change the default directory, click in the field to the right of the Log File Folder and click on the (...) button and select directory.

Click Next to continue.



Selecting a Customer

Select the account or Customer that you want to manage [Volumes](#) for by double-clicking the [Customer Description or Customer-ID](#) or left-clicking the [Customer Description or Customer-ID](#) and clicking Next at the bottom of the page to continue.

TapeTrack Lite™ - Customer Selection

×

Instructions

The Customer Selection screen allows you to select one TapeTrack Customer that will be the subject of operations in subsequent screens.
You may select a Customer by double clicking the Customer, or by clicking the Customer and pressing the Next button.

Customer	Volumes	Moves
New York Data Center	56	0
Los Angeles Data Center	23	7
North Carolina Data Center	56	23
Nashville Data Center	52	9
	187	39

☒ Remember previously selected Customer

< Back

Next >

Cancel

Selecting a Media Type

Select the [Media type](#) that you want recalled by double-clicking the [Media-ID](#) or left-clicking the [Media-ID](#) and clicking Next at the bottom of the page to continue.

TapeTrack Lite™ - Media Type Selection

Instructions

The Media Type Selection screen allows you to select a single TapeTrack Media Type to work with in subsequent screens.
You can select this Media Type by double clicking the required item in the list.

Media Type	Volumes	Moves	Scratch Deficit	Overdue
Media Containers	22	0	0	0
LTO Cartridge	34	7	0	12
	56	7	0	12

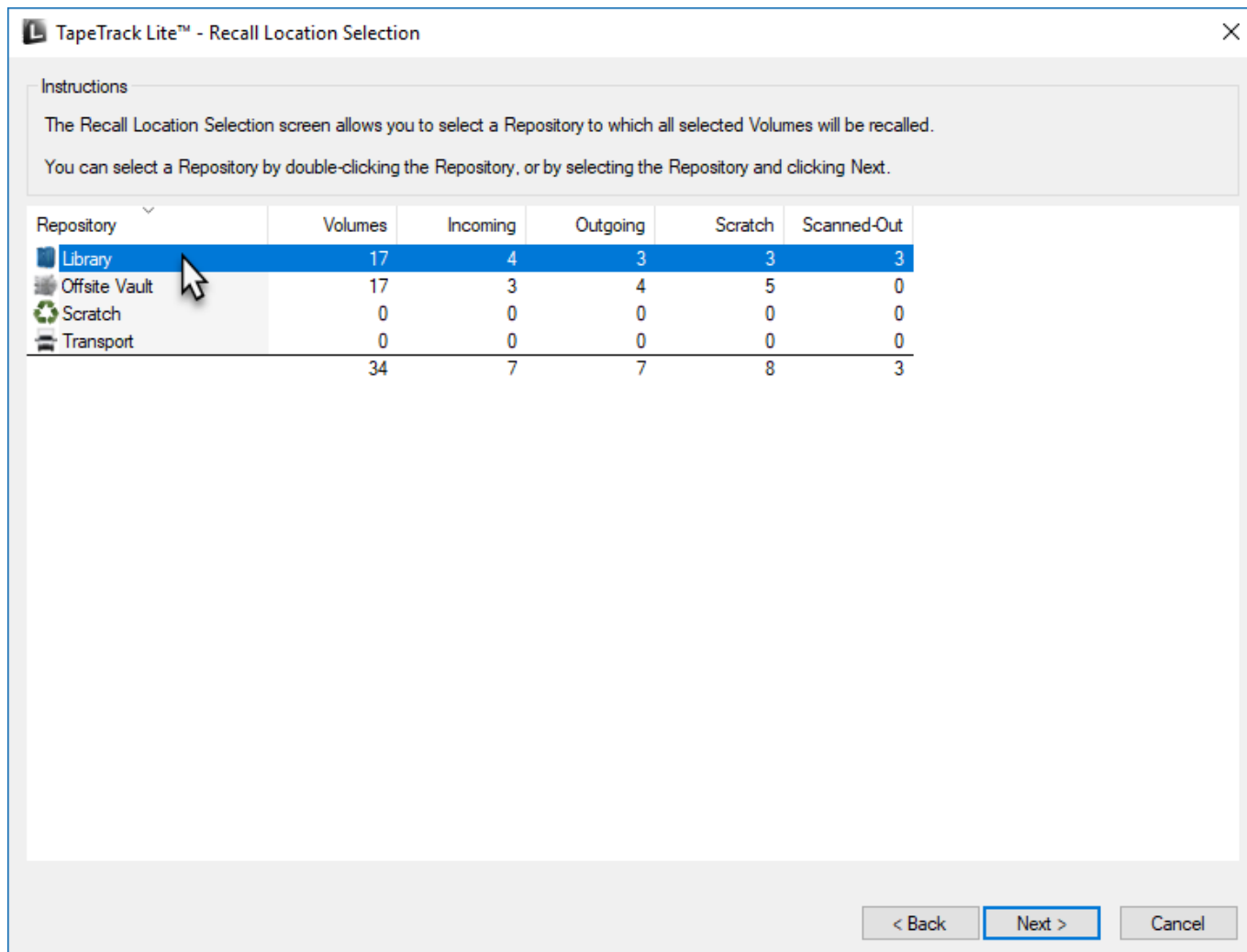
< Back

Next >

Cancel

Selecting a Repository

Select the [Repository](#) that you want the [Volumes](#) recalled to by double-clicking the [Repository-ID](#) or left-clicking the [Repository-ID](#) and clicking Next at the bottom of the page to continue.



Selecting Volumes

Select the **Volumes** you wish to recall by either:

- Click the Scanner Icon at the top right to open the Scan window and Scan the required **Volumes** using your preferred **scanning method**.
- selecting individual **Volumes** by either
 - control+left-click required **Volumes**, right-click highlighted **Volumes** and click select
 - double-click each **Volume** (green arrow indicates selected)
- select a range of **Volumes** by
 - shift+click to select range
 - multiple ranges can be selected by right-clicking each range and clicking select from the menu

TapeTrack Lite™ - Recall Volume Selection

Instructions

The Recall Volume Selection screen allows you to select Volumes to be recalled.

To select Volumes you can either double-click them, or select them in the list.

Volume-ID

Current Location

Scratch

Move Date

Description

Enter text ...

Enter text ...

E...

Enter...

Enter text here

	000007L6	Offsite Vault	No	Permanent
	000010L6	Offsite Vault	No	Permanent
	000014L6	Offsite Vault	No	Permanent
	000015L6	Offsite Vault	No	Permanent
	000016L6	Offsite Vault	Yes	Permanent
	000017L6	Offsite Vault	Yes	Permanent
	000018L6	Offsite Vault	Yes	Permanent
	000019L6	Offsite Vault	Yes	Permanent
	000023L6	Offsite Vault	Yes	Permanent
	000025L6	Offsite Vault	No	Permanent
	000029L6	Offsite Vault	No	Permanent
	000030L6	Offsite Vault	No	Permanent

Total Items

12

Selected Items

000003L6

000012L6

000013L6

000009L6

000000L6

< Back

Next >

Cancel

Click Next when all required **Volumes** are selected. If any **Volumes** are selected in error, right-click those **Volumes** and click on de-select or double-click to de-select. To de-select a range of **Volumes** , use shift+click to select range, right-click range and click de-select.

Recalling Volumes

Insert information based on the criteria for your **Volume** recall delivery

- Select anytime before or exactly from the dropbox
- Time and AM/PM for delivery
- Date for delivery
- Consignment description and notes if required (optional but recommended)

Click Next to process the recall consignment.

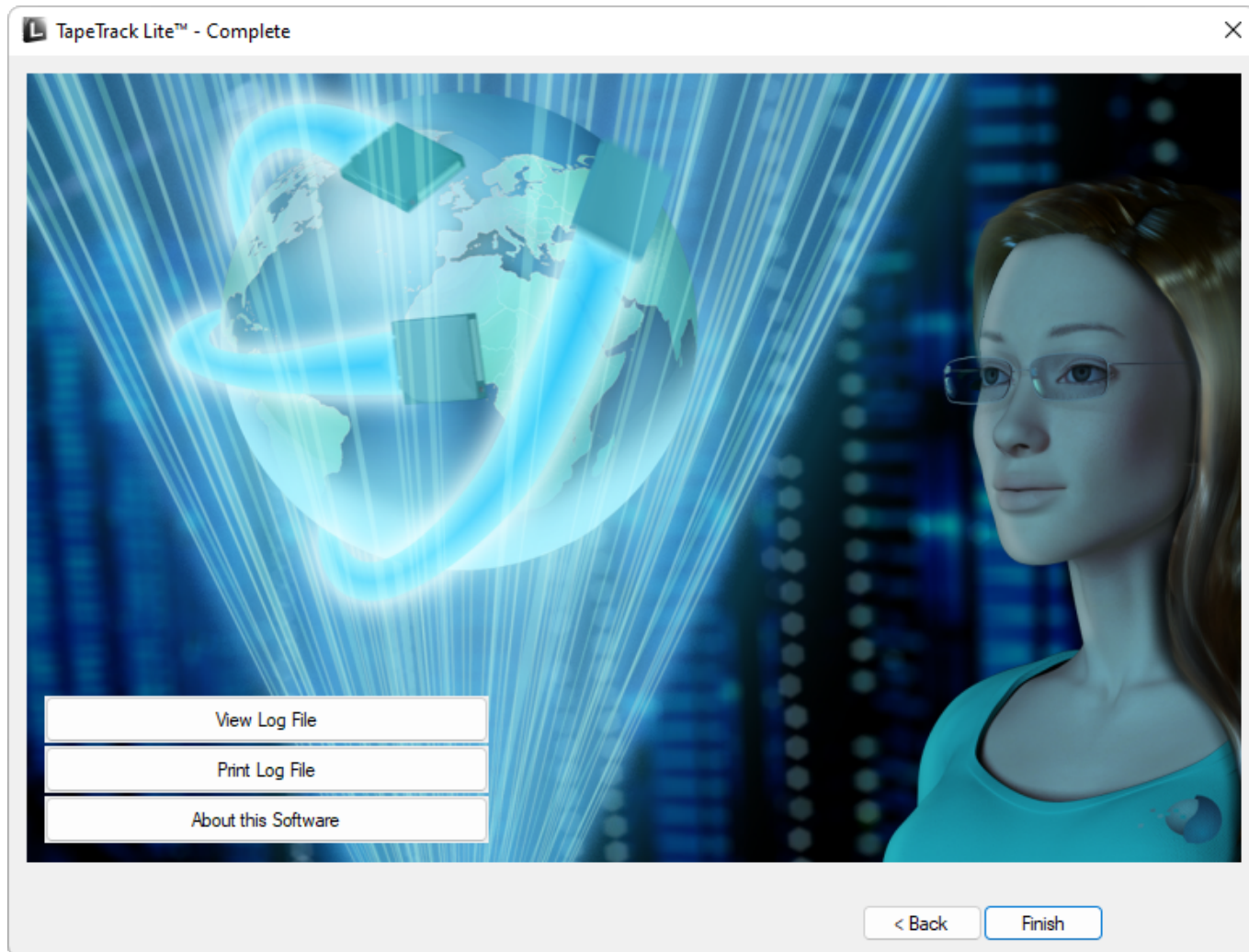
The screenshot shows a software window titled "TapeTrack Lite™ - Recall Consignment Details" with a close button (X) in the top right corner. Inside the window, there is an "Instructions" section at the top stating: "The Recall Consignment Details screen allows you to define criteria for your Recall delivery." Below this, the form contains the following fields and controls:

- A label "The selected media is required" followed by a dropdown menu showing "Anytime Before".
- An "at" label followed by a time input field showing "10:05 AM" with up/down arrows.
- An "on" label followed by a date input field showing "4/19/2019" with a calendar icon.
- A "Consignment Description" label followed by a single-line text input field.
- A "Consignment Notes" label followed by a multi-line text input field.

At the bottom right of the window, there are three buttons: "< Back", "Next >" (which is highlighted with a blue border), and "Cancel".

This will bring up the **Complete** window, from here you can:

- Click View Log File to view the log file of the last completed process..
- Click Print Log File to save a PDF of the log file to print from your PDF viewer.
- Click About this Software to view product and support (email, phone & website) information.
- Click Back button to return to start menu and select another task.
- Click Finish button or X at the top right of the window to exit TapeTrack Lite.



2019/04/17 03:00 · Scott Cunliffe

From:
<https://rtfm.tapetrack.com/> - **TapeTrack Documentation**

Permanent link:
https://rtfm.tapetrack.com/lite/function_recall?rev=1638746736

Last update: **2025/01/21 22:07**

