

Scan-In

The TapeTrack Lite Scan In function allows you Scan-In [Volumes](#) in a move status to the [Currently Selected Repository](#).

TapeTrack Lite will only allow you to initiate the Scan-In task if there are [Volumes](#) currently in an incoming status.

Scan-In Process



The Scan-In video is intended as a companion to the instructions.

Best results are obtained by reading the instructions and then viewing the implementation of the process via the video

Select Scan-In

Select Scan - In from the **Task Menu** and click Next to continue.



Options

This will open the **Options** window. If required you can set the location for the log files to be written to, or leave the default.

To change the default directory, click in the field to the right of the Log File Folder and click on the (...) button and select directory.

Click Next to continue.



Customer Selection

Select the account or [Customer](#) that you want to manage tapes for by double-clicking the [Customer-ID](#) or left-clicking the [Customer-ID](#) and clicking Next at the bottom of the page to continue.

TapeTrack Lite™ - Customer Selection [X]

Instructions


The Customer Selection screen allows you to select one TapeTrack Customer that will be the subject of operations in subsequent screens.

You may select a Customer by double clicking the Customer, or by clicking the Customer and pressing the Next button.

Customer	Volumes	Moves
New York Data Center	56	0
Los Angeles Data Center	23	7
North Carolina Data Center	56	23
Nashville Data Center	52	9
	187	39

Remember previously selected Customer

< Back **Next >** Cancel

 Checking Remember previously selected Customer will retain the currently selected **Customer** for future Lite functions.

This can be removed at any time by unchecking Remember previously selected Customer

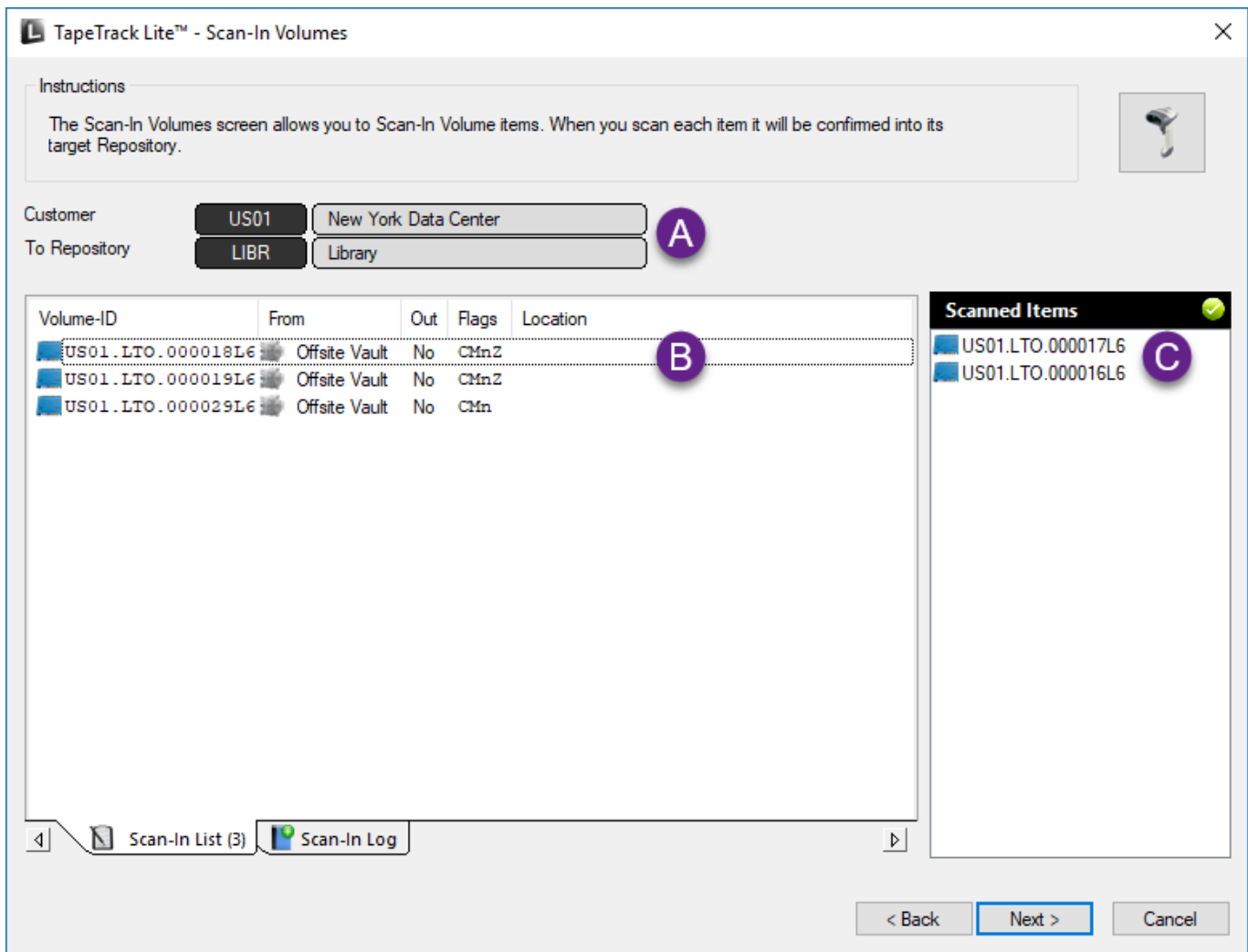
Scan In Location

In the **Scan-In Location** window select a **Repository** to Scan-In the **Volumes** to by double-clicking on the **Repository** or left-click to select **Repository** and click Next to proceed.



Scan In Volumes

This opens the **Scan-In Volumes** window and the **Scan Input** window. The **Scan-In Volume** window displays [Customer](#), [Media](#) and [Volume](#) information.



Notes:

- **A** Customer-ID and Description, **Repository-ID** and Description where **Volumes** are being Scanned-In to.
- **B** The **Volumes** to be Scanned-In.
- **C** **Volumes** Scanned-In.

Scan-In the **Volumes** using your preferred **scanning method**. Any scan errors are recorded in the Scan- In Log tab.

When all **Volumes** are Scanned-In, close **Scan-In Volumes** window by clicking X at top right of the window.

Click **Next** on the **Scan-In Volumes** window to continue.

This will bring up the **Complete** window, from here you can:

- Click **View Log File** to view the log file of the last completed process..
- Click **Print Log File** to save a PDF of the log file to print from your PDF viewer.
- Click **About this Software** to view product and support (email, phone & website) information.
- Click **Back** button to return to start menu and select another task.
- Click **Finish** button or X at the top right of the window to exit TapeTrack Lite.



2019/04/17 03:00 · Scott Cunliffe

From:
<https://rtfm.tapetrack.com/> - **TapeTrack Documentation**

Permanent link:
https://rtfm.tapetrack.com/lite/function_scanning_in?rev=1557374685

Last update: **2025/01/21 22:07**

