

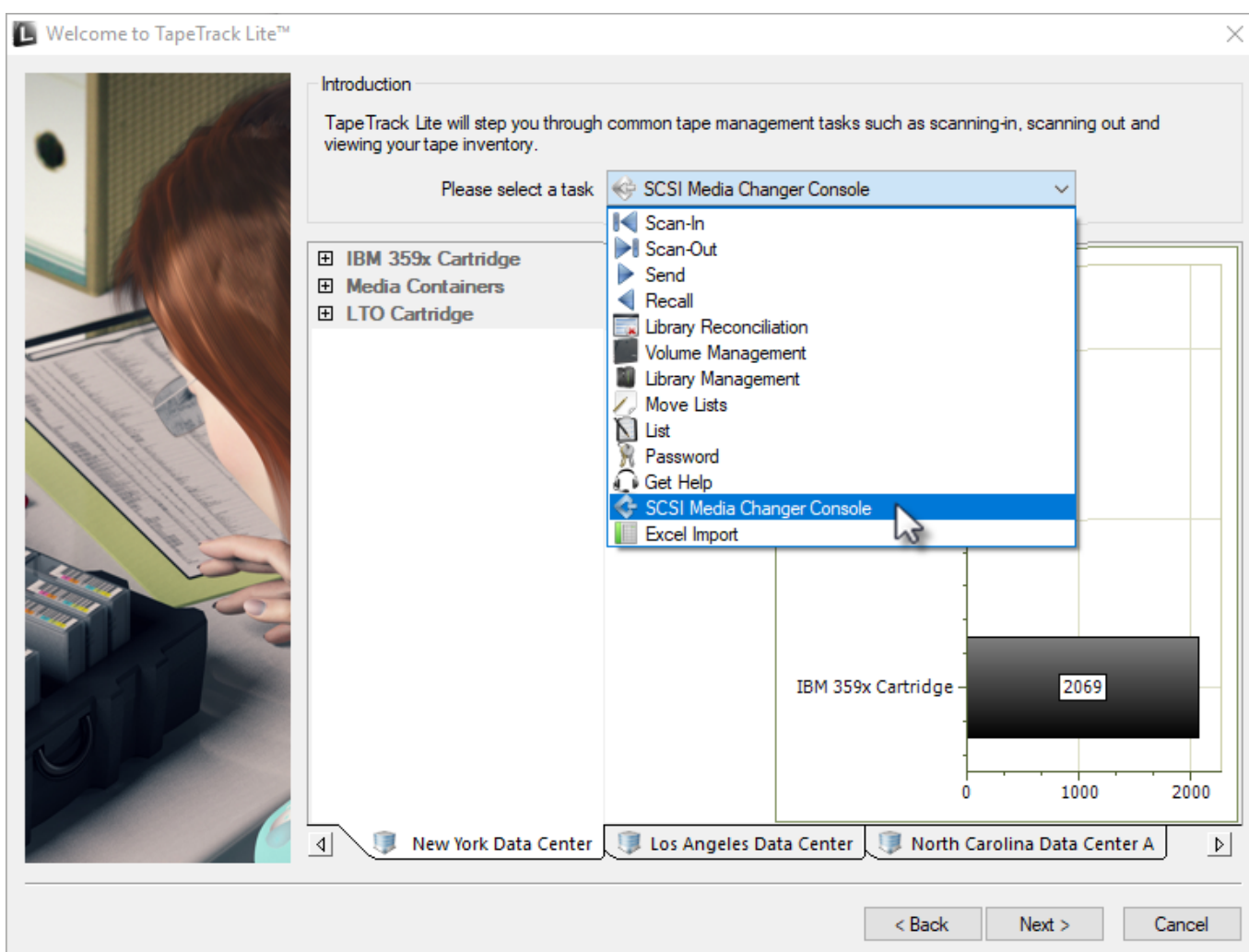
SCSI Media Changer Console

The SCSI Media Changer Console provides an interface between TapeTrack and a SCSI interface to manage [Volumes](#) and Slot allocation information.

SCSI Media Changer Console Process

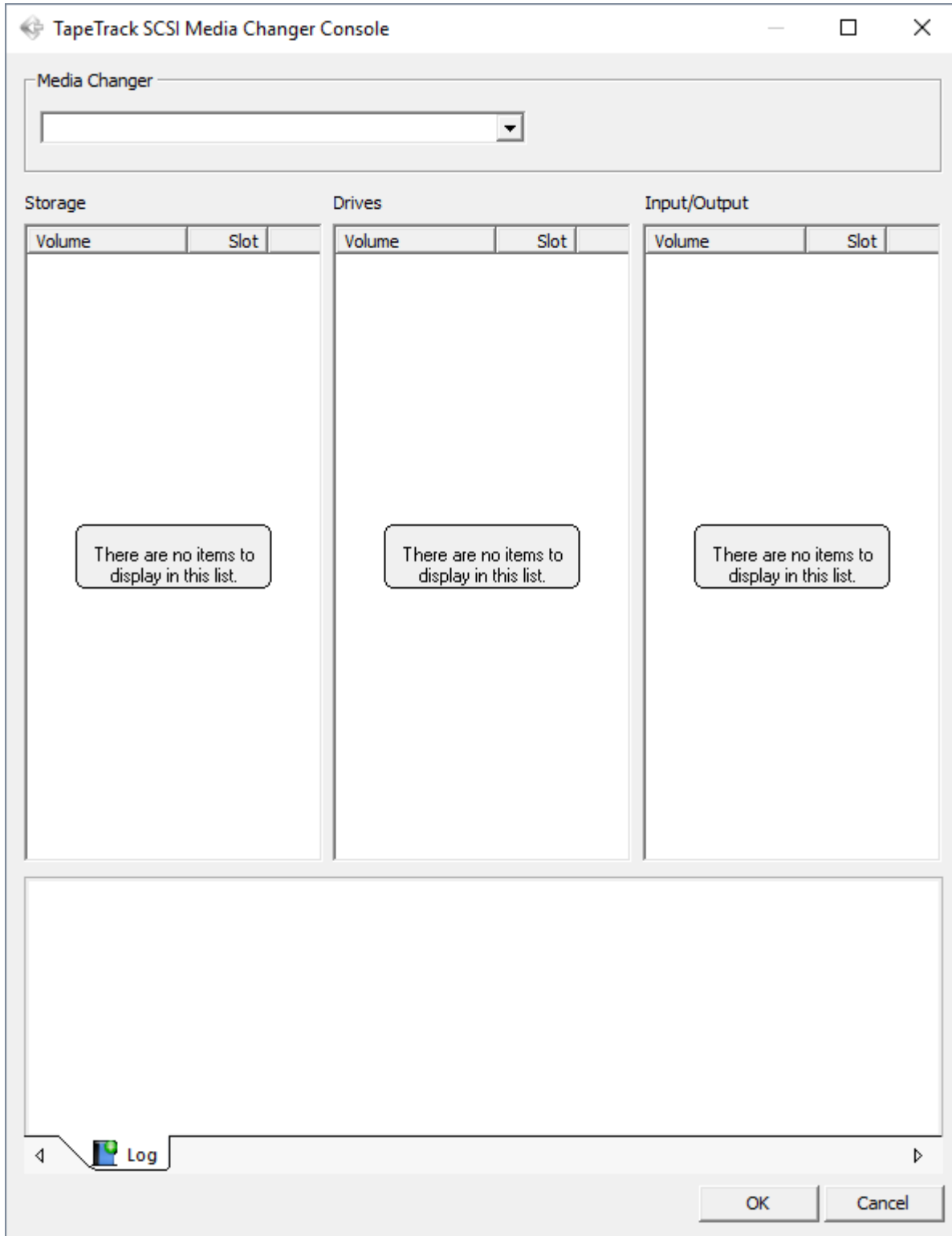
Select SCSI Media Changer Console

Select SCSI Media Changer Console from the **Task Menu** and click Next to continue.



Click Yes to the **User Account** dialogue.

This will open the **SCSI Media Changer Console** window



From: <https://rtfm.tapetrack.com/> - **TapeTrack Documentation**

Permanent link: https://rtfm.tapetrack.com/lite/function_scsi_console

Last update: **2025/01/21 22:07**

