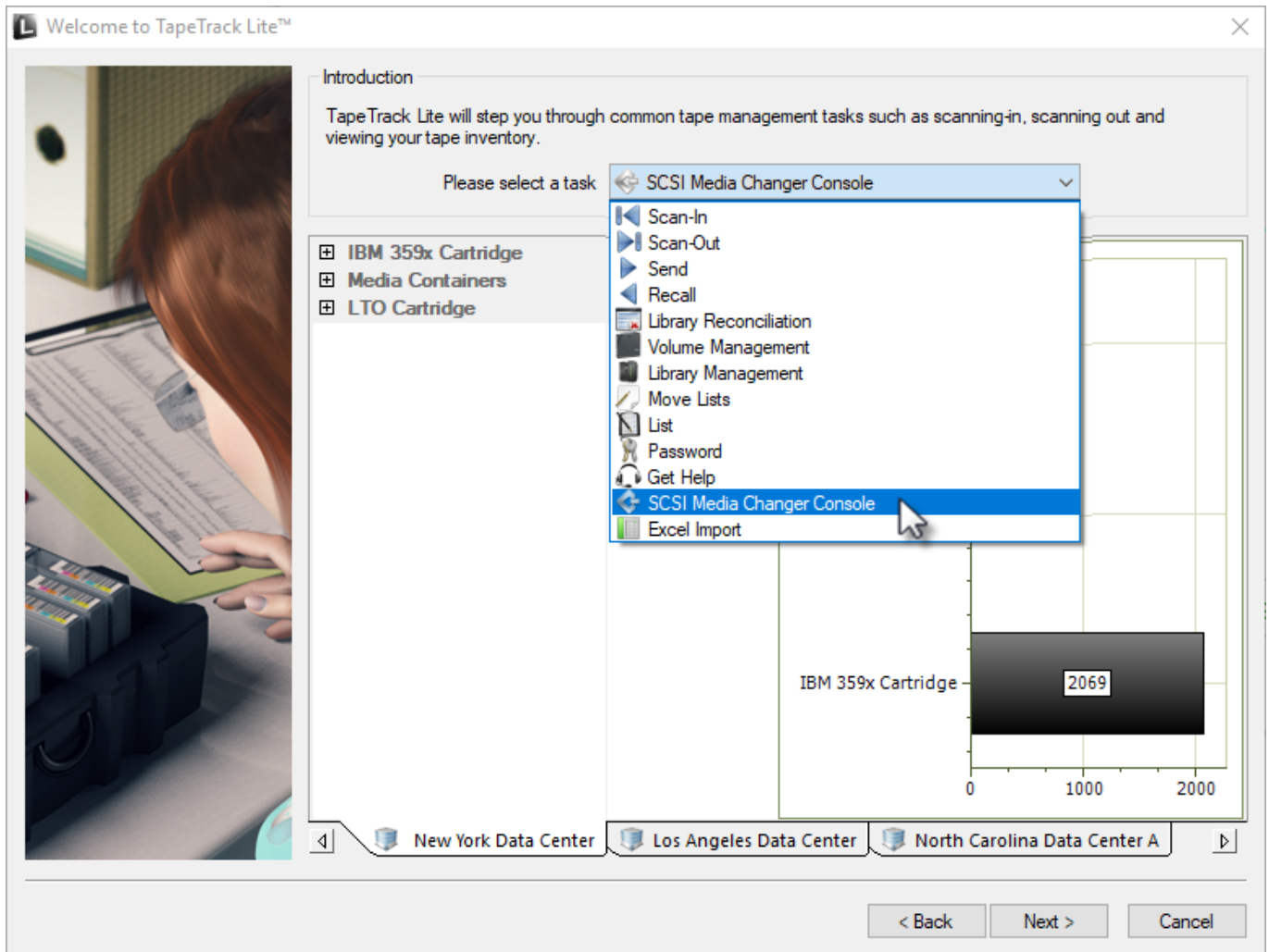
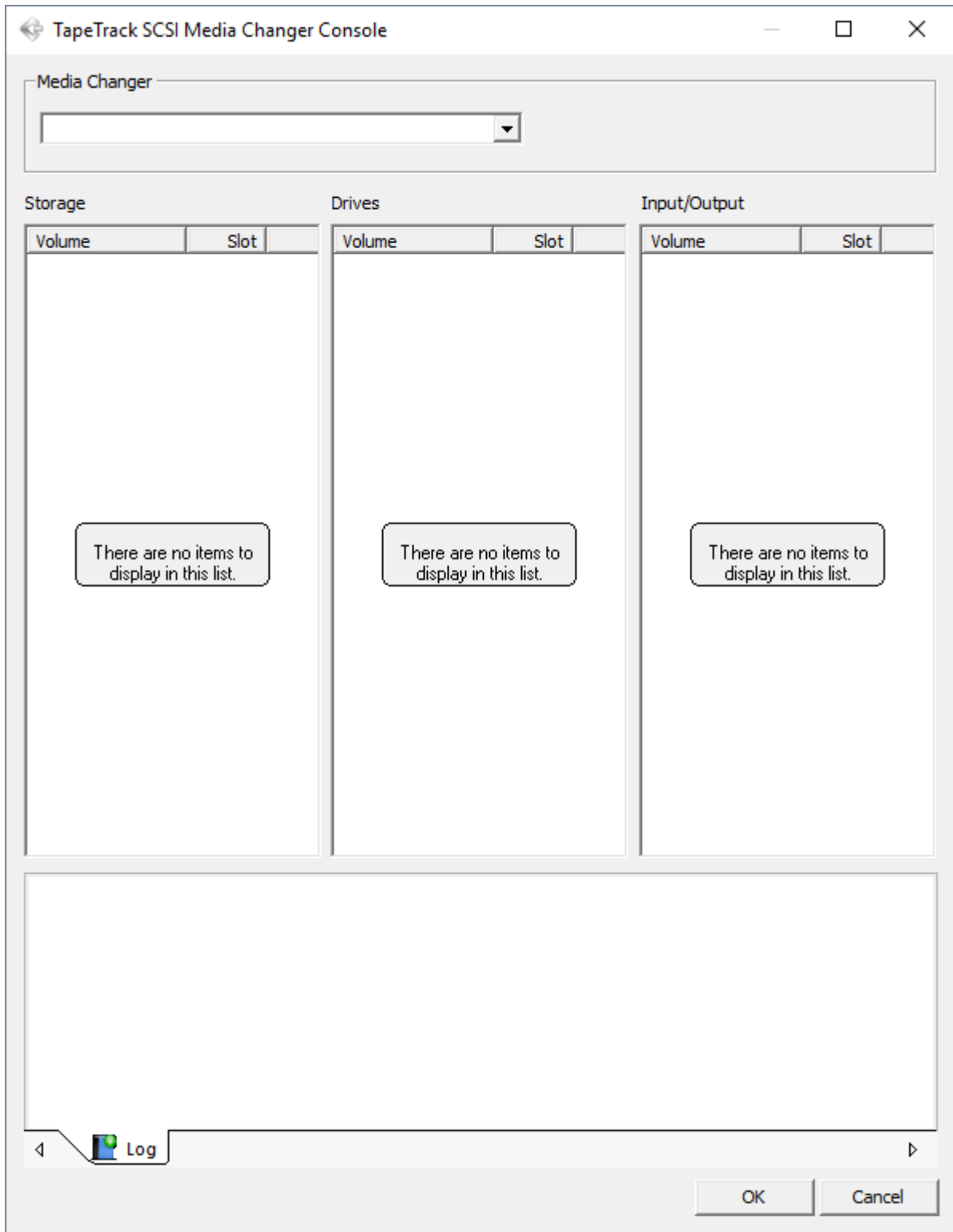


# SCSI Media Changer Console

Once logged into TapeTrack Lite, select SCSI Media Changer Console from the Library Management Tasks drop-down menu.



This will open the SCSI Media Change Console window



From: <https://rtfm.tapetrack.com/> - **TapeTrack Documentation**

Permanent link: [https://rtfm.tapetrack.com/lite/function\\_scsi\\_console?rev=1498487677](https://rtfm.tapetrack.com/lite/function_scsi_console?rev=1498487677)

Last update: **2025/01/21 22:07**

