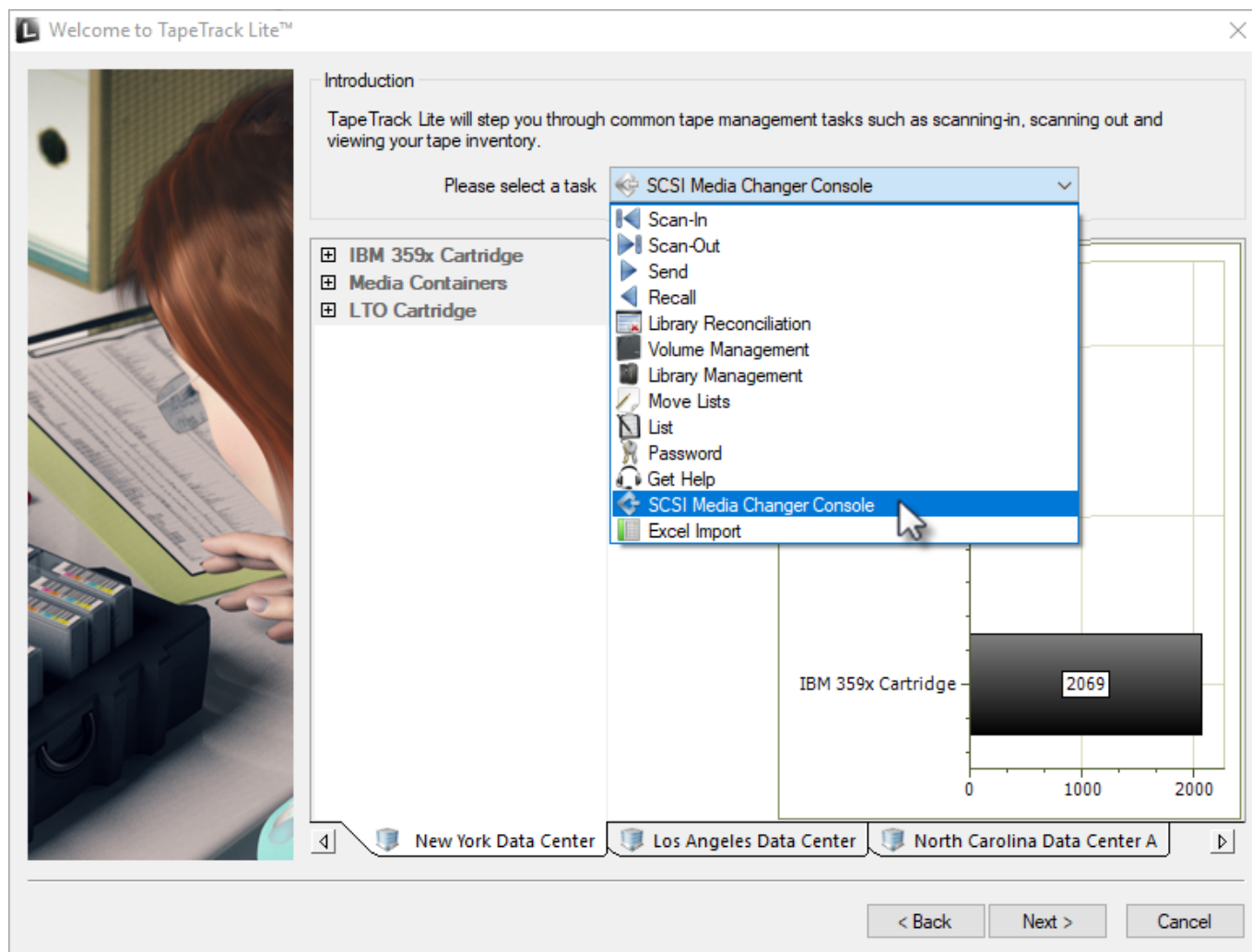


SCSI Media Changer Console

Once logged into TapeTrack Lite, select SCSI Media Changer Console from the Library Management Task's drop-down menu.



This will open the SCSI Media Change Console window

TapeTrack SCSI Media Changer Console

Media Changer

Storage Drives Input/Output

Volume	Slot	Volume	Slot	Volume	Slot
There are no items to display in this list.		There are no items to display in this list.		There are no items to display in this list.	

Log

OK Cancel

From: <https://rtfm.tapetrack.com/> - **TapeTrack Documentation**

Permanent link: https://rtfm.tapetrack.com/lite/function_scsi_console?rev=1510250593

Last update: **2025/01/21 22:07**

