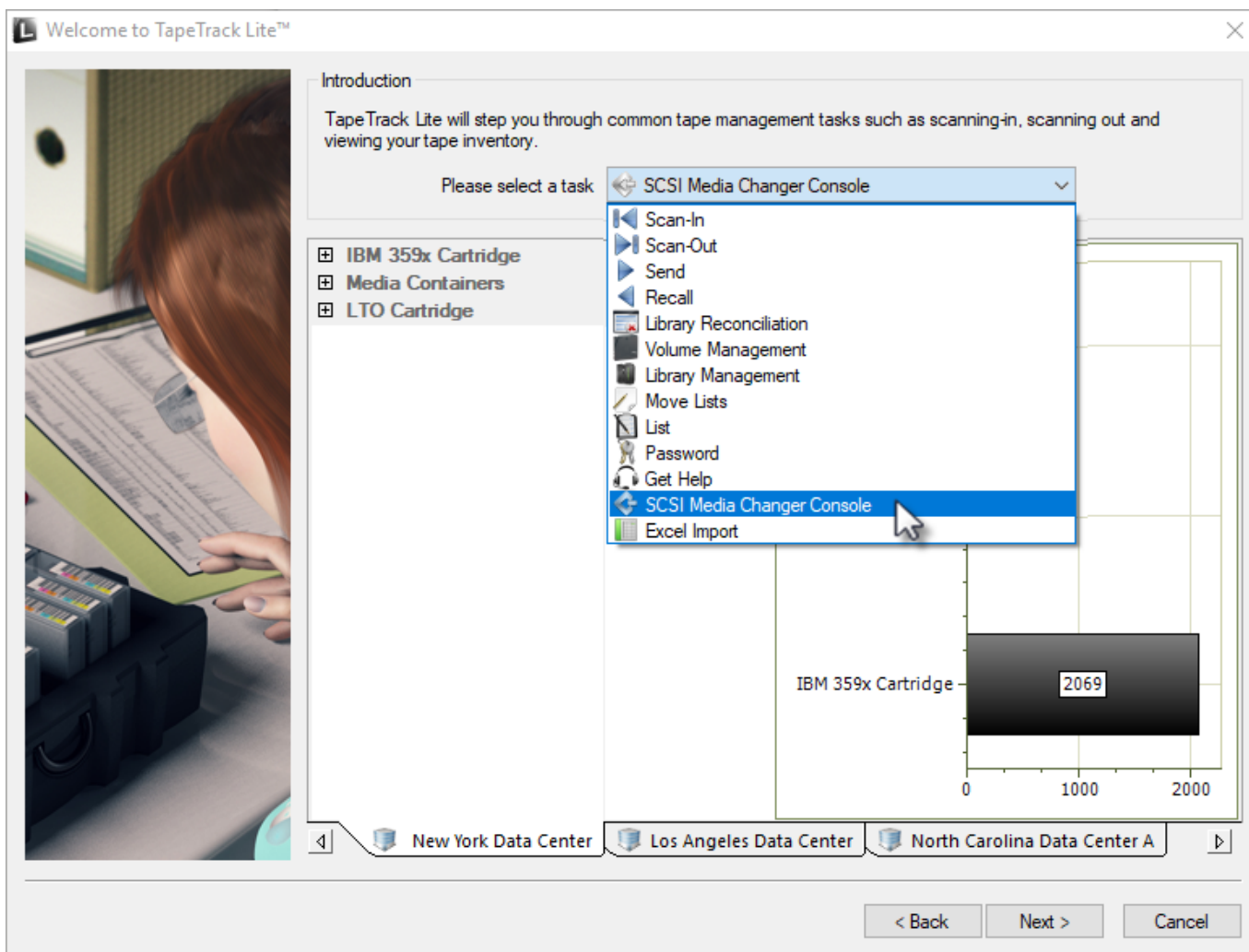


# SCSI Media Changer Console

Once logged into TapeTrack Lite, select SCSI Media Changer Console from the Library Management Task's drop-down menu.



This will open the SCSI Media Changer Console window

TapeTrack SCSI Media Changer Console

Media Changer

Storage      Drives      Input/Output

Volume	Slot	Volume	Slot	Volume	Slot
There are no items to display in this list.		There are no items to display in this list.		There are no items to display in this list.	

Log

OK      Cancel

From: <https://rtfm.tapetrack.com/> - **TapeTrack Documentation**

Permanent link: [https://rtfm.tapetrack.com/lite/function\\_scsi\\_console?rev=1521823170](https://rtfm.tapetrack.com/lite/function_scsi_console?rev=1521823170)

Last update: **2025/01/21 22:07**

