

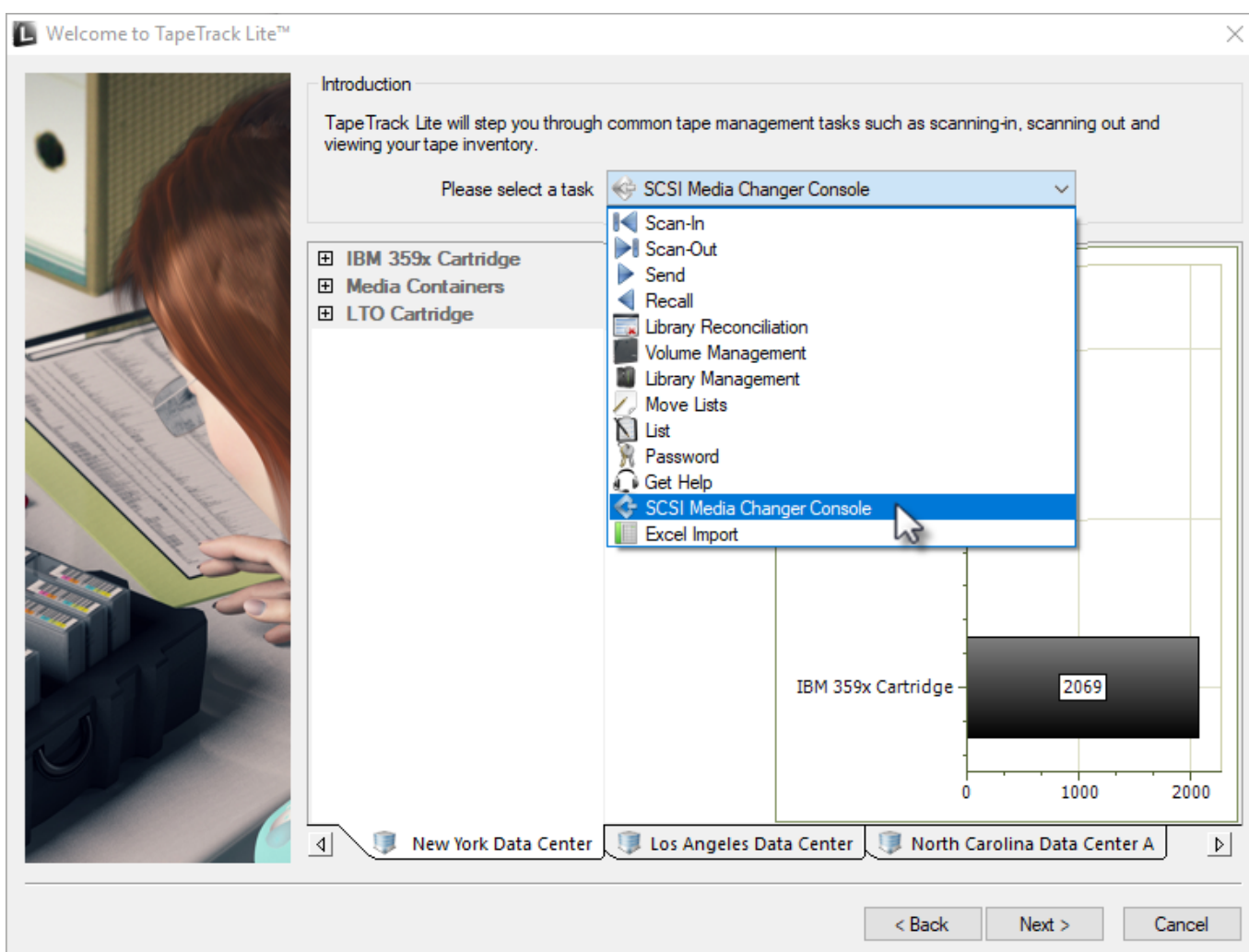
SCSI Media Changer Console

The SCSI Media Changer Console provides an interface between TapeTrack and a SCSI interface to manage [Volumes](#) and Slot allocation information.

SCSI Media Changer Console Process

Select SCSI Media Changer Console

Select SCSI Media Changer Console from the drop-down task menu and click Next to continue.



Click Yes to the **User Account** dialog.

This will open the SCSI Media Changer Console window

TapeTrack SCSI Media Changer Console

Media Changer

Storage Drives Input/Output

| Volume | Slot | Volume | Slot | Volume | Slot |
|---|------|---|------|---|------|
| There are no items to display in this list. | | There are no items to display in this list. | | There are no items to display in this list. | |

Log

OK Cancel

From: <https://rtfm.tapetrack.com/> - **TapeTrack Documentation**

Permanent link: https://rtfm.tapetrack.com/lite/function_scsi_console?rev=1544143031

Last update: **2025/01/21 22:07**

