

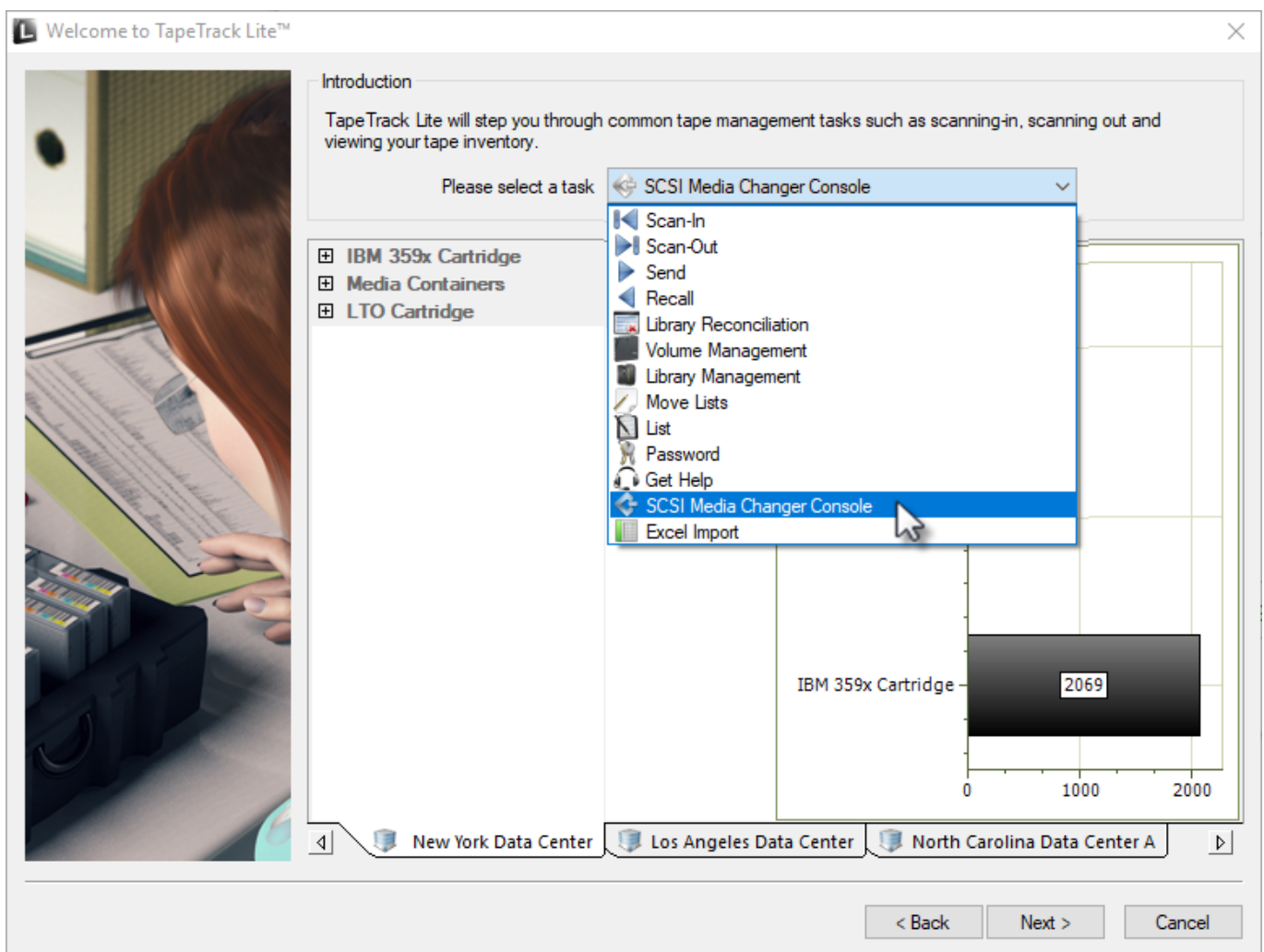
# SCSI Media Changer Console

The SCSI Media Changer Console provides an interface between TapeTrack and a SCSI interface to manage [Volumes](#) and Slot allocation information.

## SCSI Media Changer Console Process

### Select SCSI Media Changer Console

Select SCSI Media Changer Console from the **Task Menu** and click Next to continue.



Click Yes to the **User Account** dialog.

This will open the **SCSI Media Changer Console** window

TapeTrack SCSI Media Changer Console

Media Changer

Storage      Drives      Input/Output

Volume	Slot	Volume	Slot	Volume	Slot
There are no items to display in this list.		There are no items to display in this list.		There are no items to display in this list.	

Log

OK      Cancel

From: <https://rtfm.tapetrack.com/> - **TapeTrack Documentation**

Permanent link: [https://rtfm.tapetrack.com/lite/function\\_scsi\\_console?rev=1544577886](https://rtfm.tapetrack.com/lite/function_scsi_console?rev=1544577886)

Last update: **2025/01/21 22:07**

