

Send

Overview

The TapeTrack Lite Send function is used to select media volumes that reside in one location for the purpose of putting the volumes into a move status to another location.

When a volume is put into a move status this only represents the request to move the volume and a second step is required to confirm the movement of the volume.

In addition to putting each volume into a move state, the send function also allows you to set the:

1. Next Move date (the date the volume will automatically return to another location).
2. A description of the volume.
3. A late threshold where the volume will be flagged as late if it has not been confirmed.

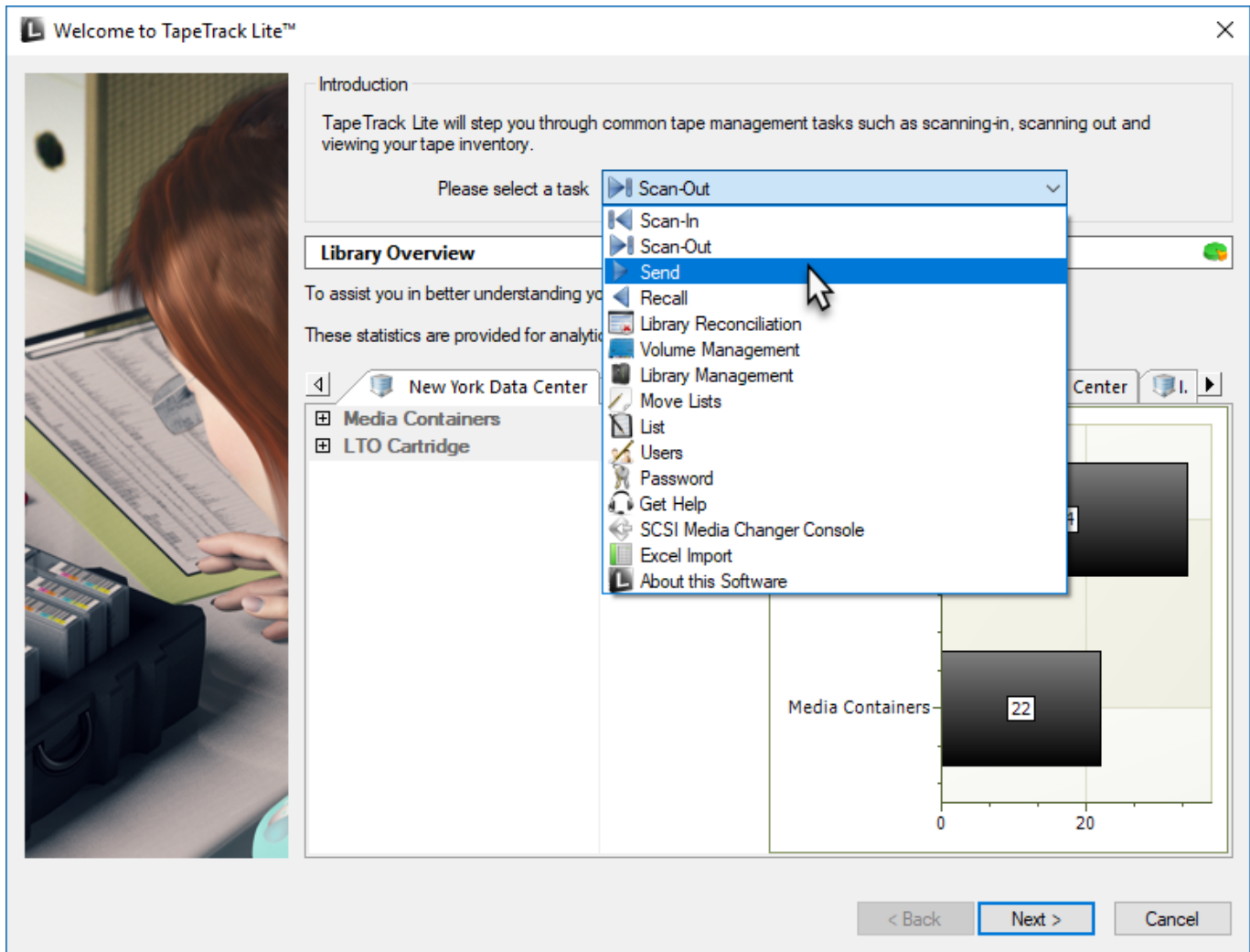
Video Walkthrough

[video](#)

Steps

Select Send

1. Select Send from the Library Management Tasks drop-down menu.
2. Once you have selected the required task, you then press Next to progress to the next screen.



Options

This will open the Options window. If required you can set the location for the log files to be written to, or leave the default. To change the default directory, click in the right of the Log File Folder and click on the more options button (...) and select the preferred directory.

[image](#)

Under Advanced Options:

- **A** Set the number of minutes before a volume will be marked as overdue at its target repository.
- **B** The date for the volumes next move.
- **C** List of pre-defined volumes. To add additional lists, create new files in the install directory that match the pattern List-*.txt.

[image](#)



TapeTrack Lite™ - Customer Selection

Instructions

The Customer Selection screen allows you to select one TapeTrack Customer that will be the subject of operations in subsequent screens.

You may select a Customer by double clicking the Customer, or by clicking the Customer and pressing the Next button.

Customer	Volumes	Moves
New York Data Center	56	0
Los Angeles Data Center	23	7
North Carolina Data Center	56	23
Nashville Data Center	52	9
	187	39

Remember previously selected Customer

< Back **Next >** Cancel

Scan to add Volumes

100008L6

100008L6

Barcode	Customer	Media Type	Volume-ID	Message
100008L6	New York Data Center	LTO Cartridge	100008L6	Request OK
000012L6	New York Data Center	LTO Cartridge	000012L6	Request OK
US01.CONT.CONT003	New York Data Center	Media Containers	CONT003	Request OK
000002L6	New York Data Center	LTO Cartridge	000002L6	Request OK
000001L6	New York Data Center	LTO Cartridge	000001L6	Request OK
000000L6	New York Data Center	LTO Cartridge	000000L6	Request OK
US01.CONT.CONT001	New York Data Center	Media Containers	CONT001	Request OK

Messages (7)

Defaults

- Customer-ID: US01
- Media-ID: LTO

Options

- Save Defaults: True
- Enable Sounds: True
- Edit: *
- Multiline Records: True

TapeTrack Lite™ - Scan and Modify (7)

Instructions

This screen allows you to scan tapes and containers and then update information on each item.
To update any of the scanned items just click on them in the tree. You can also drag-and-drop tapes between containers.

A

- No Container
 - US01.CONT.CONT001
 - US01.LTO.000000L6
 - US01.LTO.000001L6** **B**
 - US01.LTO.000002L6
 - US01.CONT.CONT003
 - US01.LTO.000012L6
 - US01.LTO.100008L6**

Identity

Customer	New York Data Center
Media Type	LTO Cartridge
Volume-ID	000001L6

Disposition

Status	Known
Target	Offsite Vault
Next move	Friday, June 30, 2017 (25 days)
Time Threshold	No threshold
Data-Cluster	<No Selection>

Attributes

Description	
-------------	--

C

Item Tree Quick Edit

< Back Next > Cancel

Notes:

- **A** The scanned item tree shows the items that have already been scanned. The items highlighted in red are items that are not known to the system.
- **B** Selecting a volume allows you to edit the associated fields.
- **C** The Quick Edit option allows you to change the screen to the Quick Edit style.
- **D** The Scanner button allows you to reiterate the Scanner Window.

TapeTrack Lite™ - Scan and Modify (7)

Instructions
This screen allows you to scan tapes and containers and then update information on each item.
To update any of the scanned items just click on them in the tree. You can also drag-and-drop tapes between containers.

Volume	Next move	Description	Data Cluster
US01.CONT.CONT001	2017-06-30 (25 days)		
US01.LTO.000001L6	2017-06-30 (25 days)		
US01.LTO.000002L6	2017-06-30 (25 days)		
US01.LTO.000003L6	2017-06-30 (25 days)		
US01.CONT.CONT003	2017-06-30 (25 days)		
US01.LTO.000012L6	2017-06-30 (25 days)		
US01.LTO.100008L6	2017-06-30 (25 days)		

Context menu options:
Edit > Copy > Data Cluster
Edit > Paste > Description
Edit > Next Move Date
Edit > Data Cluster + description + next move date

Item Tree Quick Edit

< Back Next > Cancel

From: <https://rtfm.tapetrack.com/> - **TapeTrack Documentation**

Permanent link: https://rtfm.tapetrack.com/lite/function_send?rev=1496856265

Last update: **2025/01/21 22:07**

