

Send

Overview

The TapeTrack Lite Send function is used to select media volumes that reside in one location for the purpose of putting the volumes into a move status to another location.

When a volume is put into a move status this only represents the request to move the volume and a second step is required to confirm the movement of the volume.

In addition to putting each volume into a move state, the send function also allows you to set values such as:

1. A [Next Move Date](#) which will influence when a volume returns to you.
2. A Description of the volume.
3. A [Late Threshold](#) which will raise an alert if the volume is not scanned-in.
4. A [Data Cluster](#) which can be used to automatically determine the [Next Move Date](#), using a [Simple Management Rule](#).

Steps

Select Send

1. Select Send from the Library Management Task's drop-down menu.
2. Once you have selected the required task, you then click Next to progress to the next screen.



Options

This will open the Options window. If required you can set the location for the log files to be written to, or leave the default. To change the default directory, click in the right of the Log File Folder and click on the more options button (...) and select the preferred directory.



Notes:

- **A** If required you can set the location for the log files to be written to, or leave the default. To change the default directory, click in the right of the Log File Folder and click on the more options button (...) and select the preferred directory
- **B** Under Advanced Options:
 - Set the time deadline before a volume will be marked as overdue at its target repository.
 - The date for the volumes next move.
 - List of pre-defined volumes. To add additional lists, create new files in the install directory that match the pattern List-*.txt.



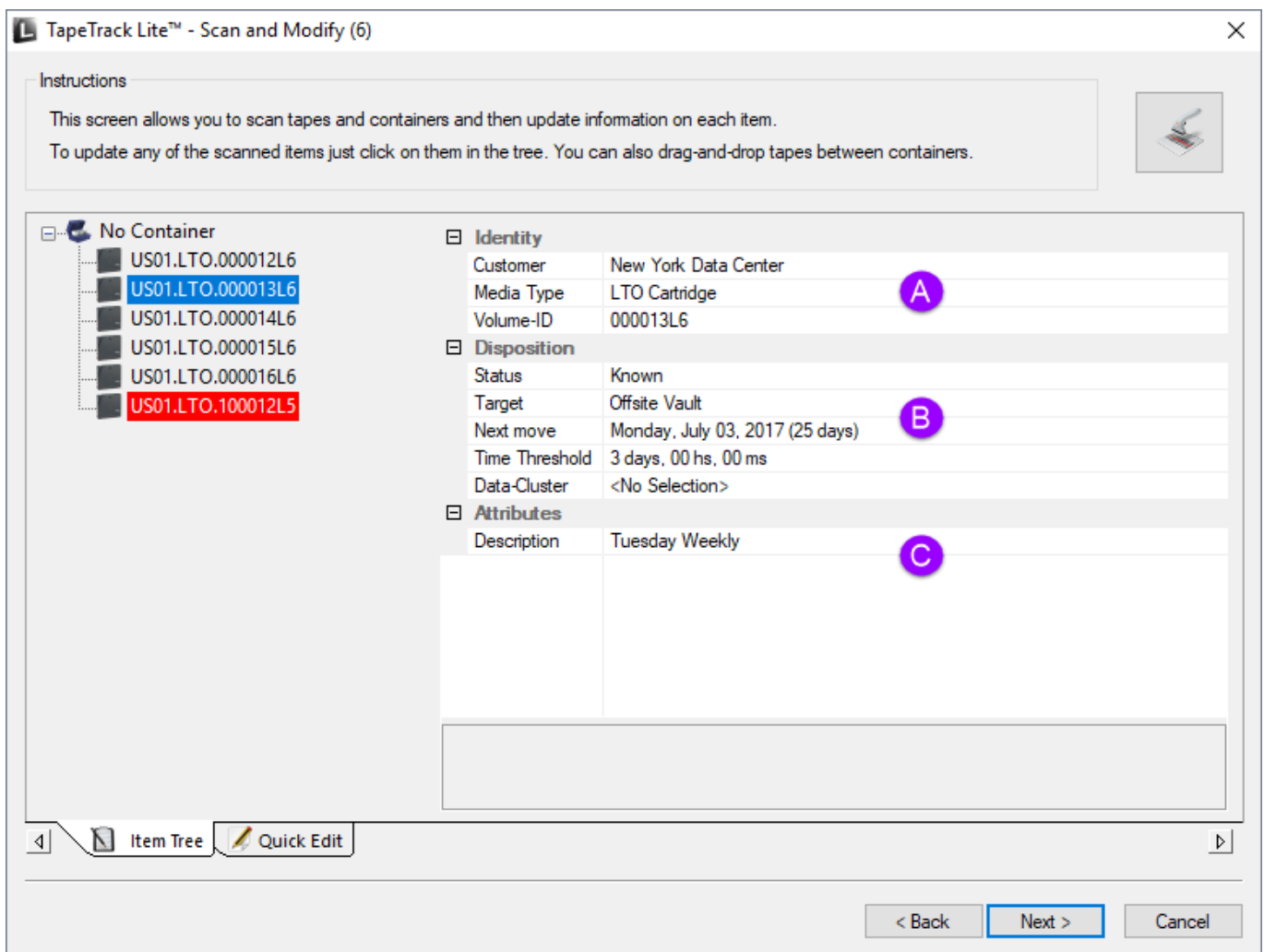
Scanning to add Volumes

This opens the Scan and Modify window which, by default, opens the Scan To Add Volumes window. Scan out the required tapes using your preferred [scanning method](#) When all volumes are scanned in close Scan To Add Volumes window by clicking X at top right of window.

Displaying Volumes

This sets focus to the Scan And Modify window. All volumes previously scanned in are displayed in the main pane of the window. Recognized volumes are displayed with black font on white background. Unrecognized volumes are displayed with white font on a red background. Left-clicking on any volume ID will display that media's:

To alter current settings on a volume select required volume on left pane in window. Change any attribute on that volume by clicking in attribute window and selecting required value.

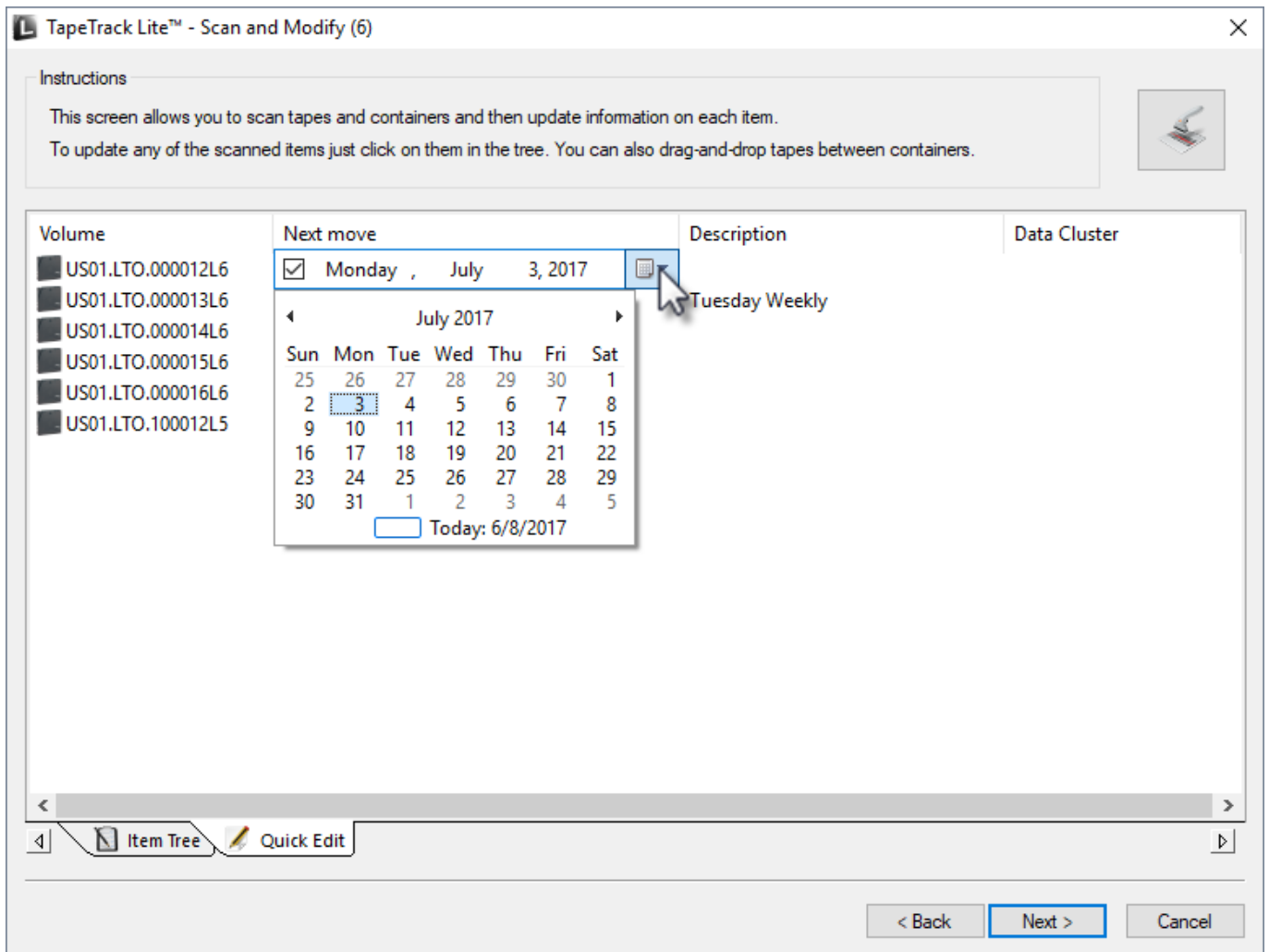


Notes:

- **A** Customer ID, Media Type, Volume ID
- **B** Status (Known or unknown), Target repository, Next move date, Time threshold and data cluster
- **C** The volumes description

Multiple volumes can be edited as a group using the Quick Edit tab. Select a tape and set next move

date, description and/or data cluster.



Right-click the modified volume and select edit → copy and the appropriate value from the options.



Select volumes to apply the data to and right-click and select edit → paste and the appropriate value from the options.

After modifying volume information to required values click Next button to continue. If you have any unknown volumes you will be prompted to add them before continuing. To add new media successfully all fields associated with that volume (Customer ID, media type, volume ID etc) must be applied. If an unwanted volume is scanned inadvertently it may be removed by right-clicking the volume in the Scan and Modify window (items tab) and selecting Remove from Scan List.



Click Next to continue.


Verifying Volumes


This will open the Send Apply and Verify window. This screen displays the final results of the send operation including the volume ID, current repository, target repository next move date, volume description and request status.

Click Next to continue.

TapeTrack Lite™ - Send Apply and Verify

Instructions
This screen shows you the final results of your Send operation.

Update Progress 

Verification Progress 

| Volume | Current | Target | Next move | Description | Status |
|-------------------|---------|---------------|------------|----------------|------------|
| US01.LTO.000012L6 | Library | Offsite Vault | 2017-07-03 | | Request OK |
| US01.LTO.000013L6 | Library | Offsite Vault | 2017-07-03 | Tuesday Weekly | Request OK |
| US01.LTO.000014L6 | Library | Offsite Vault | 2017-07-03 | | Request OK |
| US01.LTO.000015L6 | Library | Offsite Vault | 2017-07-03 | | Request OK |
| US01.LTO.000016L6 | Library | Offsite Vault | 2017-07-03 | | Request OK |

List contains 5 records

< Back Next > Cancel

Complete

This will bring up the Complete window, from here you can:

- Click Finish, Cancel or X to exit TapeTrack Lite
- Click Back to return to start menu and select another task
- Click View Log File to view the log
- Click Print Log File to print out log file for further reference
- Click About this Software to view product and support (email, phone & website) information



scanning

From: <https://rtfm.tapetrack.com/> - **TapeTrack Documentation**

Permanent link: https://rtfm.tapetrack.com/lite/function_send?rev=1510336085

Last update: **2025/01/21 22:07**

