

Upload and Download Files

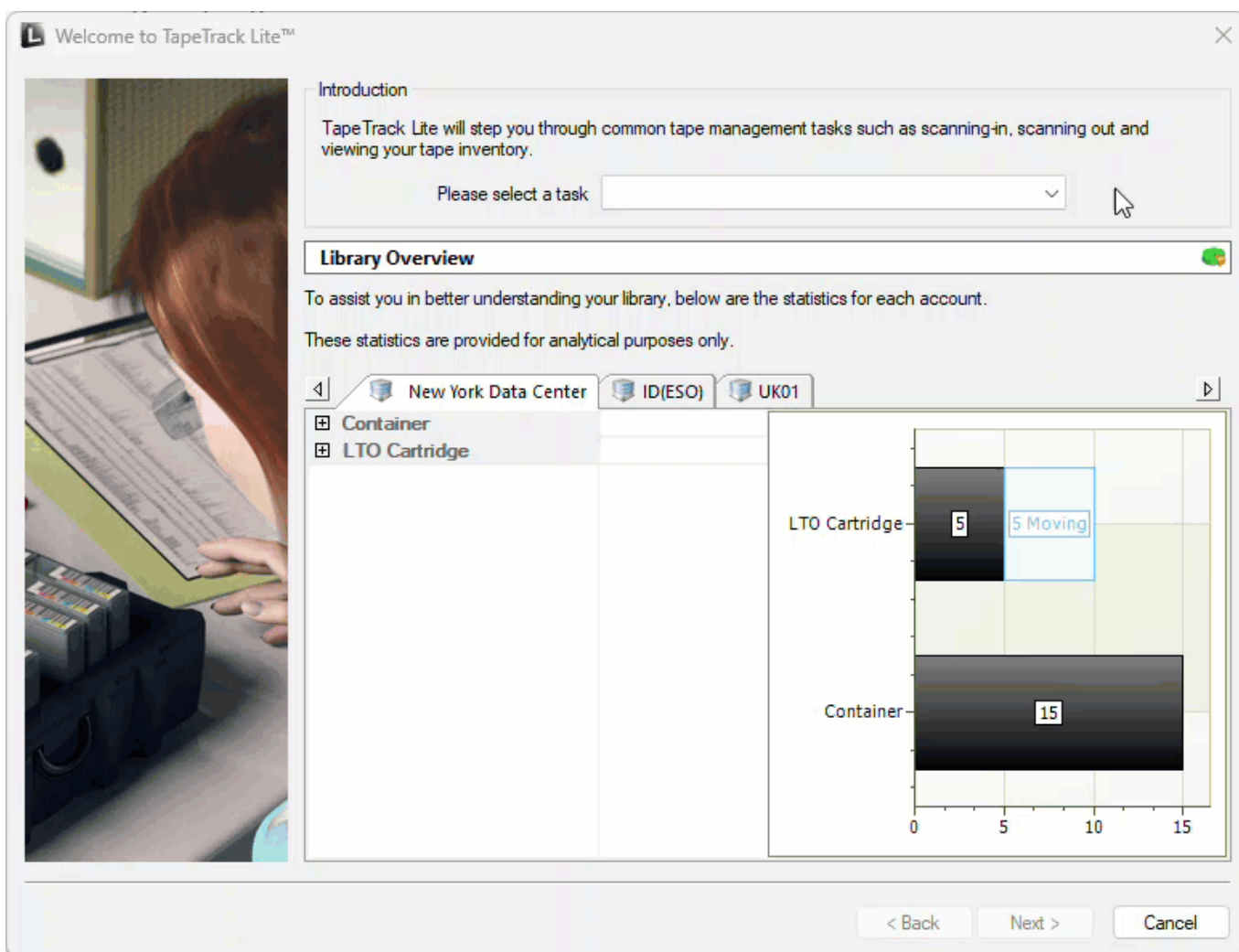
Prerequisites



Menu option **Upload and Download Files** needs to be enabled via the Lite config file

File Upload Process

Select Upload And Download File from the **Task Menu** and click Next to continue.



Options

This will open the **Options** window. If required you can change the location for the log files to be written to, or leave the default.

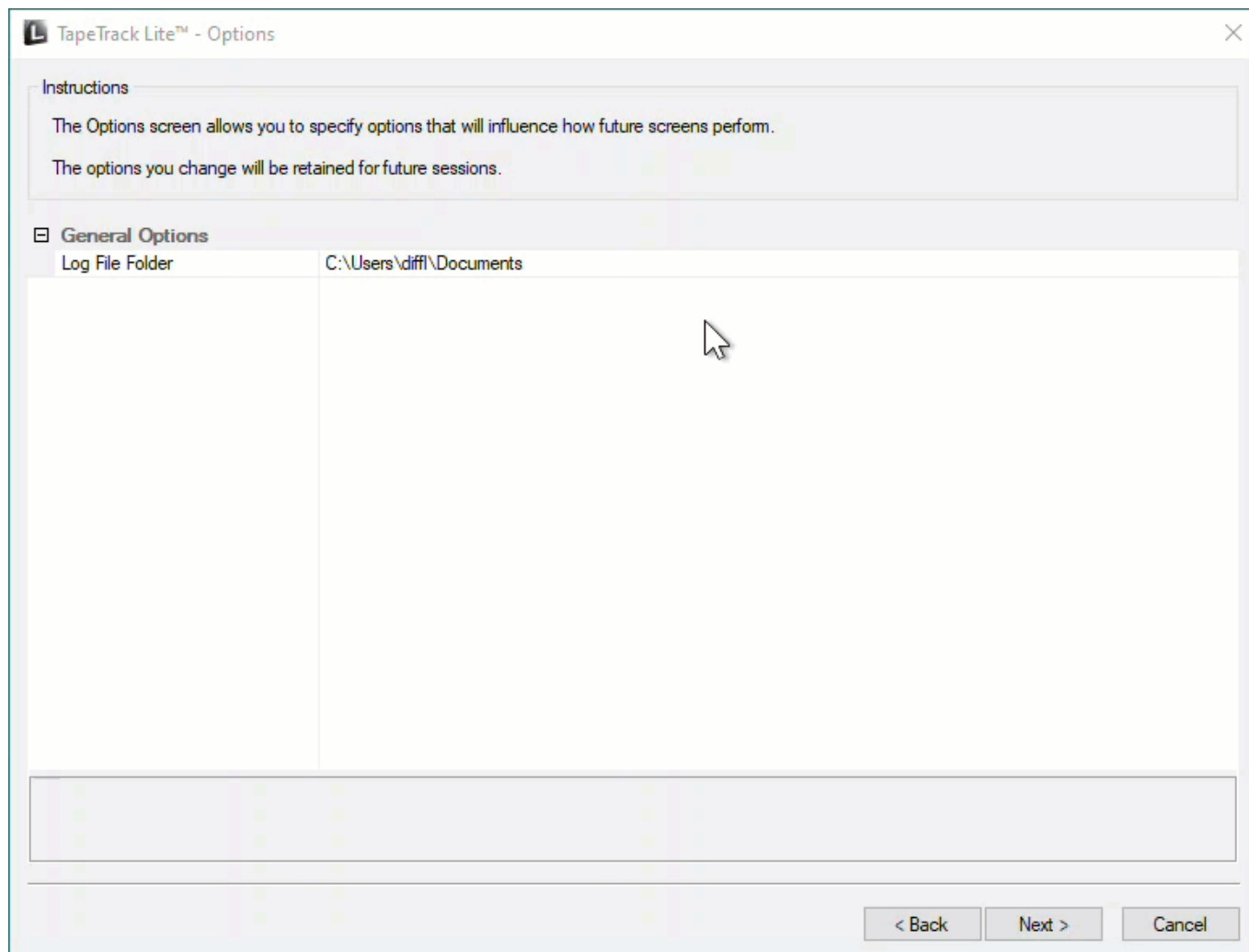
To change the default directory, click in the field to the right of the Log File Folder and click on the (...)

button, select the required directory and click OK to save.



Setting the directory location in the Lite configuration file will skip this window and write the log file to that location.

Click Next to continue.



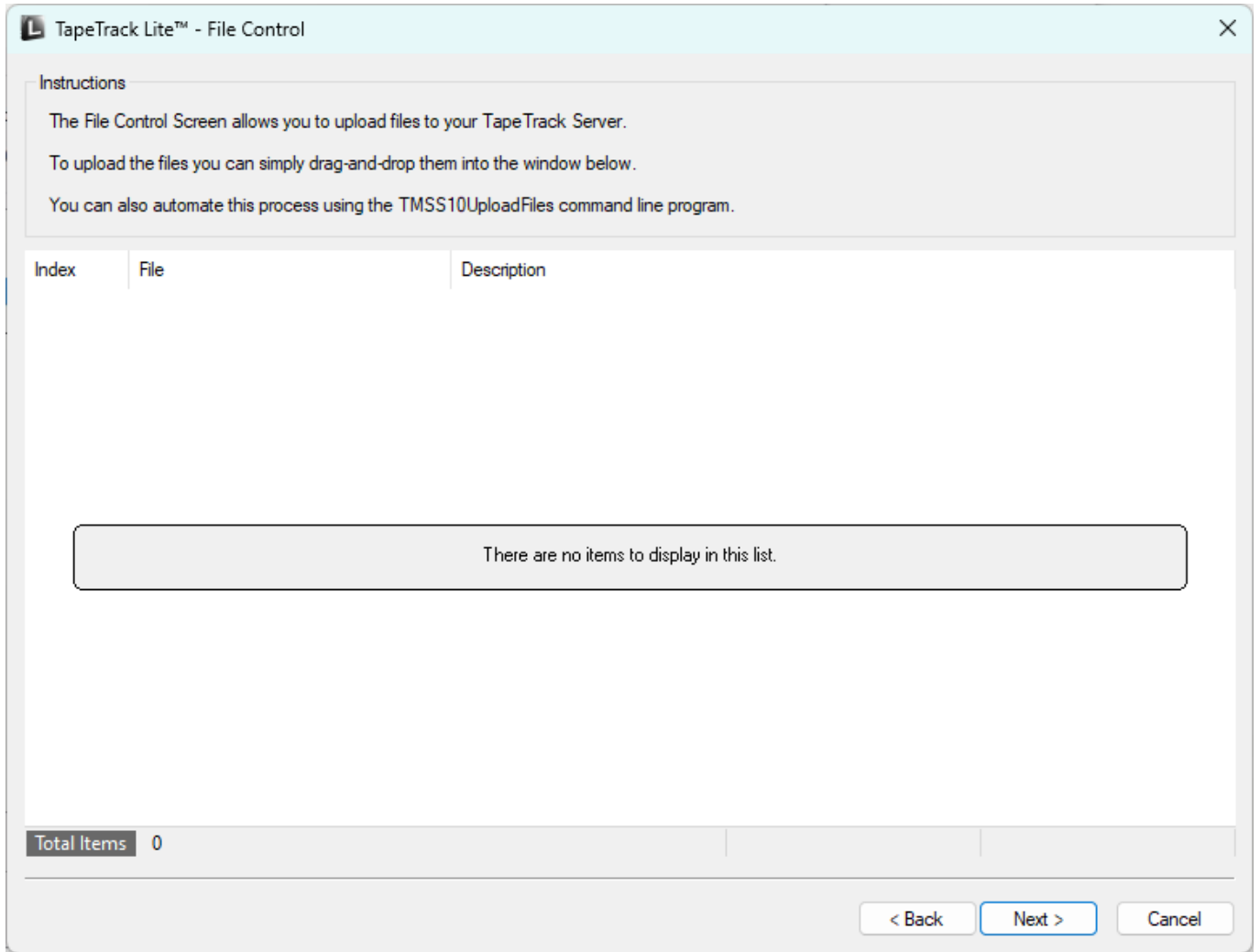
Customer Selection

Select the **Customer or account** that you want to manage tapes for by double-clicking the **Customer-ID** or left-clicking the **Customer - ID** and clicking Next at the bottom of the window to continue.

The screenshot shows a dialog box titled "TapeTrack Lite™ - Customer Selection". At the top, there is an "Instructions" section with the following text: "The Customer Selection screen allows you to select one TapeTrack Customer that will be the subject of operations in subsequent screens. You may select a Customer by double clicking the Customer, or by clicking the Customer and pressing the Next button." Below the instructions is a table with three columns: "Customer", "Volumes", and "Moves". The table lists three data centers: "New York Data Center" (105 volumes, 29 moves), "Los Angeles Data Center" (278 volumes, 30 moves), and "North Carolina" (4,418 volumes, 0 moves). A horizontal line is drawn below the "North Carolina" row, and the totals for each column are listed below the line: 4,801 for Volumes and 59 for Moves. A mouse cursor is visible over the table area. At the bottom left, there is a checked checkbox labeled "Remember previously selected Customer". At the bottom right, there are three buttons: "< Back", "Next >", and "Cancel".

Customer	Volumes	Moves
New York Data Center	105	29
Los Angeles Data Center	278	30
North Carolina	4,418	0
4,801		59

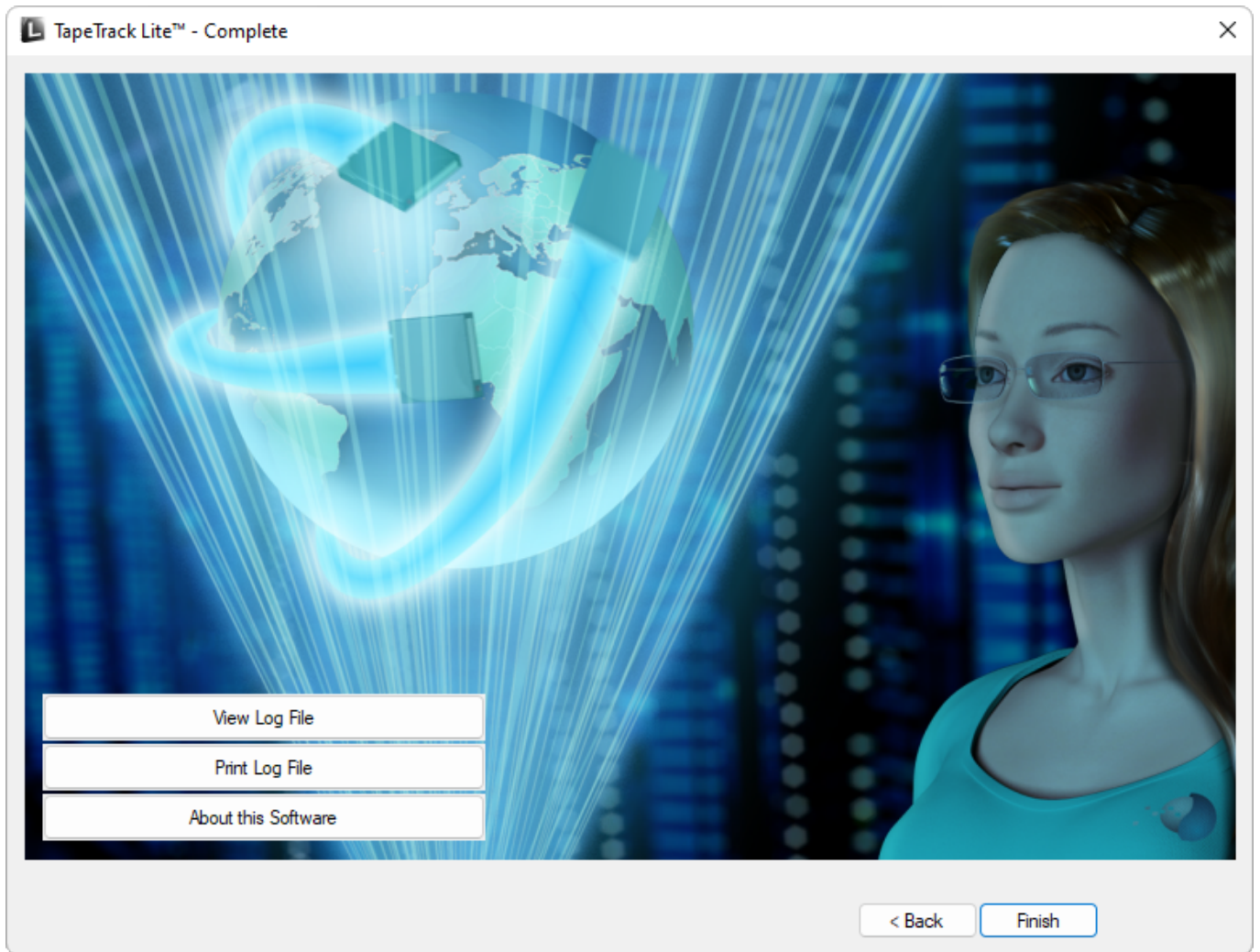
Darg selected file from Windows Explorer and drop in the main window.



Complete

This will bring up the **Complete** window, from here you can:

- Click View Log File to view the log file of the last completed process..
- Click Print Log File to save a PDF of the log file to print from your PDF viewer.
- Click About this Software to view product and support (email, phone & website) information.
- Click Back button to return to start menu and select another task.
- Click Finish button or X at the top right of the window to exit TapeTrack Lite.



2019/04/17 03:00 · Scott Cunliffe

From:
<https://rtfm.tapetrack.com/> - **TapeTrack Documentation**

Permanent link:
https://rtfm.tapetrack.com/lite/function_upload?rev=1699236493

Last update: **2025/01/21 22:07**

