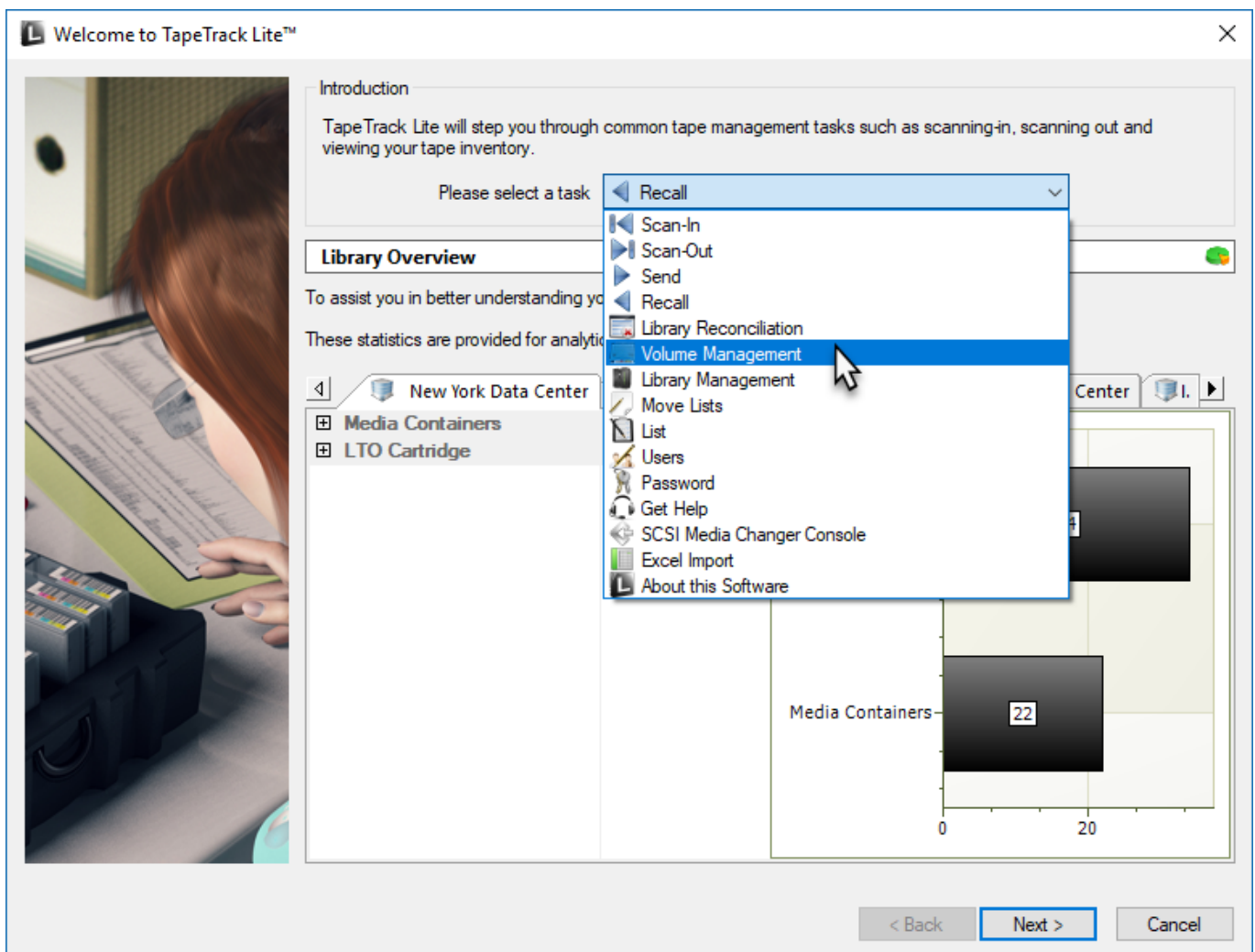


# Volume Management

The Volume Management task allows you to manage volume data by editing next move dates as well as volume attributes.

## Managing Volumes

Once logged into TapeTrack Lite, select Volume Management from the drop-down task menu and click Next to continue.

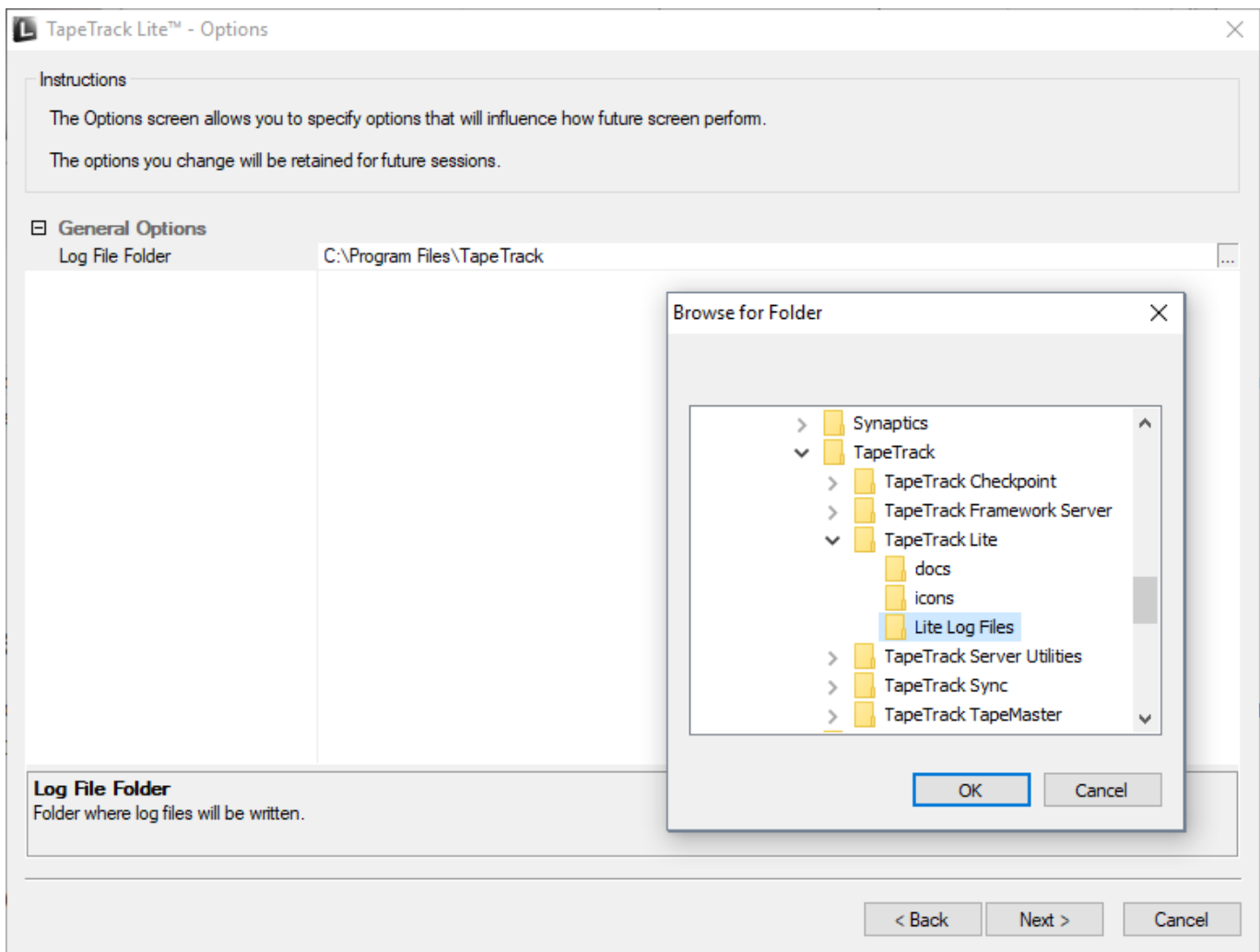


## Options

This will open the **Options** window. If required you can set the location for the log files to be written to, or leave the default.

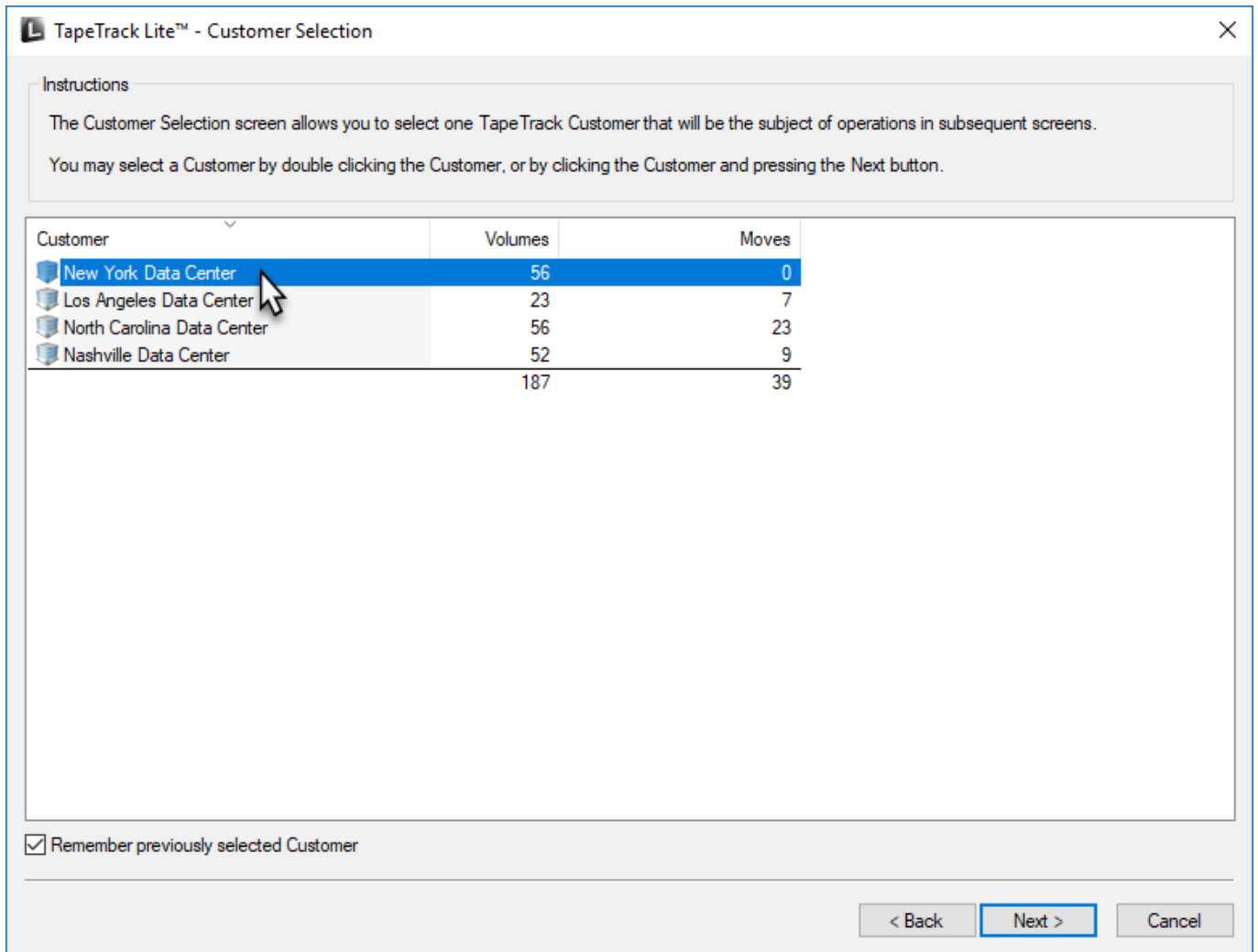
To change the default directory, click in the field to the right of the Log File Folder, click on the more options button (...). From the **Browse For File** window select the preferred directory and click OK.

Click Next to continue.



## Selecting a Customer

From the **Customer Selection** window select a **Customer** that will be the subject of operations in subsequent screens by double-clicking a **Customer** or selecting a **Customer** and clicking Next.



## Managing Media Types

The **Manage Media Library** window displays each of the **Volumes** separated into tabs by **Media** type. Each **volume** is displayed with its **Volume-ID** and current **Repository**. The right of the window displays, in graphical format, the different **Repositories**, the total number of **Volumes** as well as the **Volumes** flagged to move in or out of that **Repository**.

**Instructions**

The Manage Media Library screen allows you to see each of your tape Volumes.

You can use the filters at the top of each column to select which Volumes to display.

If you wish to view or update the Next Move Date, Description or Extended Attributes of a specific Volume, simply select the Volume and edit the fields in the property list on the right.

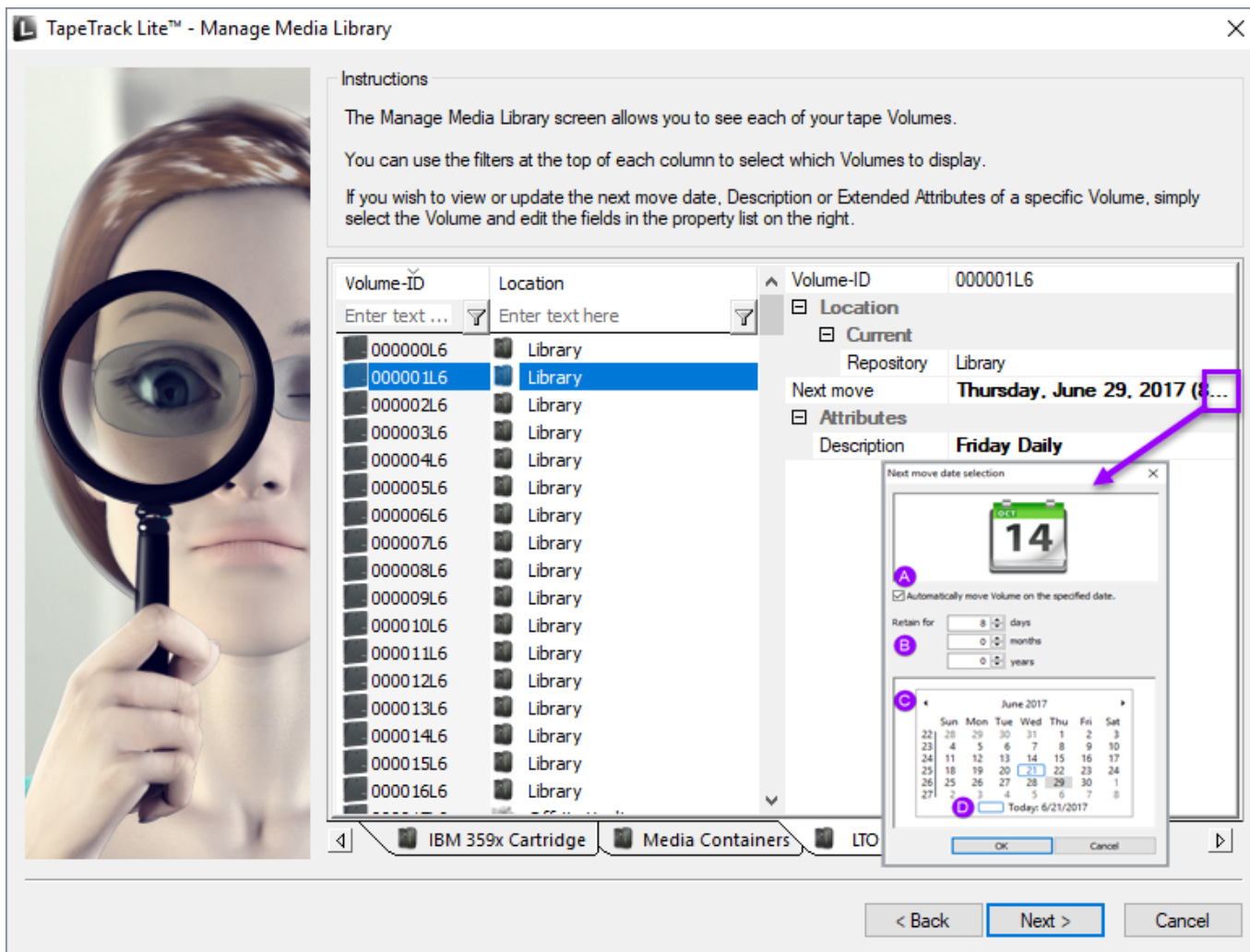
| Volume-ID | Location      | Description      |
|-----------|---------------|------------------|
| 000000L6  | Offsite Vault |                  |
| 000002L6  | Library       |                  |
| 000003L6  | Offsite Vault | Monday Weekly    |
| 000004L6  | Library       | Wednesday Weekly |
| 000005L6  | Library       | Friday Weekly    |
| 000006L6  | Library       |                  |
| 000007L6  | Offsite Vault |                  |
| 000009L6  | Offsite Vault |                  |
| 000010L6  | Offsite Vault |                  |
| 000011L6  | Library       |                  |
| 000012L6  | Offsite Vault |                  |
| 000013L6  | Offsite Vault | Tuesday Weekly   |
| 000014L6  | Offsite Vault |                  |
| 000015L6  | Offsite Vault |                  |
| 000016L6  | Library       |                  |
| 000017L6  | Library       |                  |
| 000018L6  | Offsite Vault |                  |

Media Containers | LTO Cartridge

< Back | Next > | Cancel

- **A** Volumes-ID & Repository
- **B** Volumes by Repository
- **C** Total Volumes in Repository
- **D** Volumes moving out
- **E** Volumes moving in
- **F** Media Type Tabs

To manage Media, select a Volume by clicking on the Volume ID. When a Volume is selected the fields Next Move and Attributes can be edited. To edit the Next Move Date click the button (...) in the Next Move text box to open up the **Next Move Date Selector**. Select the required Move Date and click OK to close.



**Notes**

- **A** Click the Automatically move **Volume** on the specified date check box to open up the **Calendar Input**.
- **B** Input time offset to automatically set Move Date.
- **C** Scroll and select to set Move Date.
- **D** Click to set today as the Move Date.

The Next Move Date can be set by selecting the required number of years, months and days in top input boxes or by scrolling through the calendar using the scroll arrows to go forward or backwards to select a specific date.

Clicking on the month or year displayed between the scroll arrows will alter scope from one month to one year to 12 years to 120 years to allow quick acquisition of the required date.

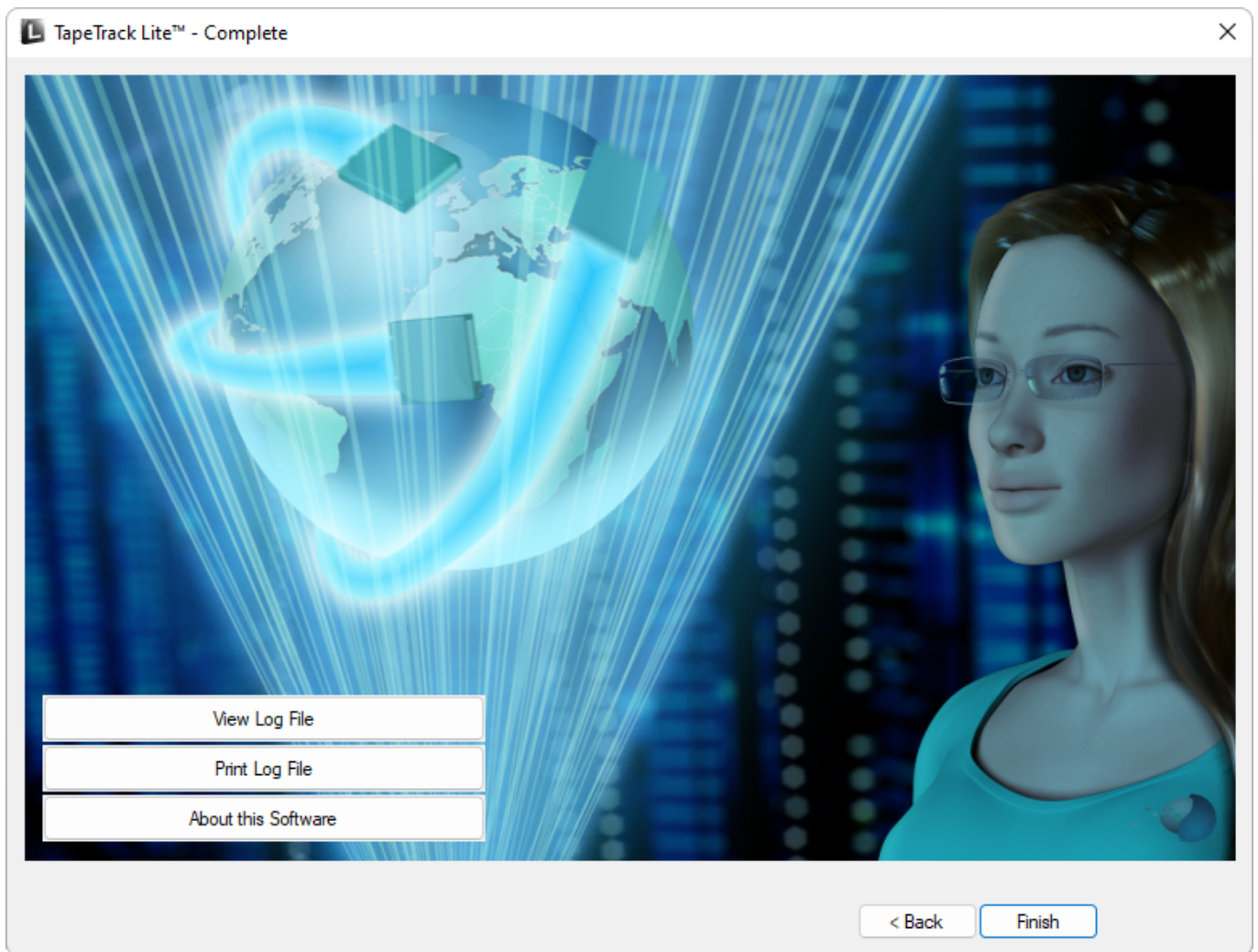
Clicking on a displayed selection will zoom the scope inwards by incrementing steps until your back at a one month display. When displaying one month at a time, clicking on Today at the bottom of the calendar will return you to today's date.

When all **Volume** alterations are complete click Next.

# Complete

This will bring up the **Complete** window, from here you can:

- Click **View Log File** to view the log.
- Click **Print Log File** to print out the log file for further reference.
- Click **About this Software** to view product and support (email, phone & website) information.
- Click **Back** to return to start menu and select another task.
- Click **Finish**, **Cancel** or **X** to exit TapeTrack Lite.



From:  
<https://rtfm.tapetrack.com/> - **TapeTrack Documentation**

Permanent link:  
[https://rtfm.tapetrack.com/lite/function\\_volume\\_management?rev=1543807055](https://rtfm.tapetrack.com/lite/function_volume_management?rev=1543807055)

Last update: **2025/01/21 22:07**

