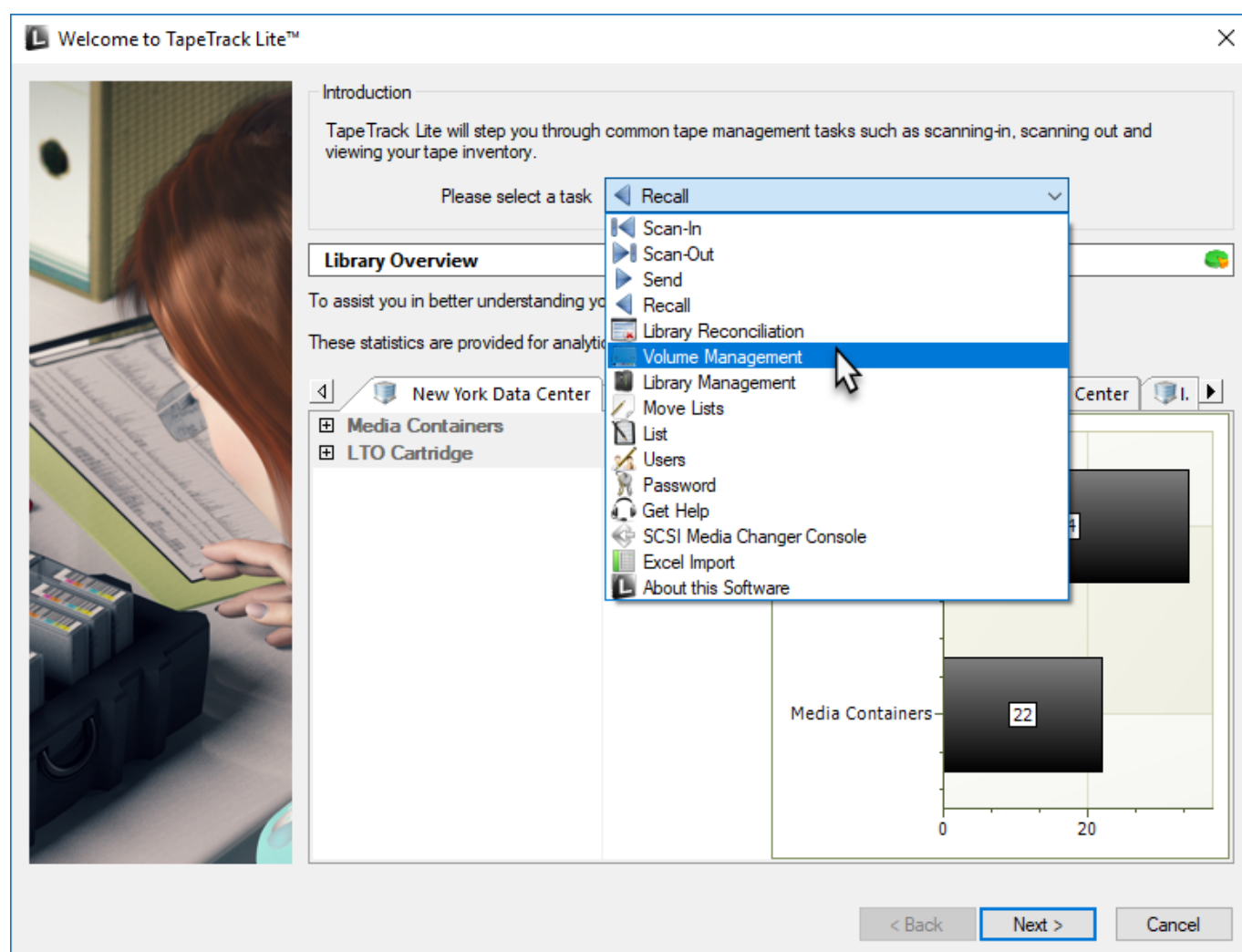


Volume Management

The Volume Management task allows you to manage volume data by editing next move dates as well as volume attributes.

Managing Volumes

Once logged into TapeTrack Lite, select Volume Management from the drop-down task menu and click Next to continue.

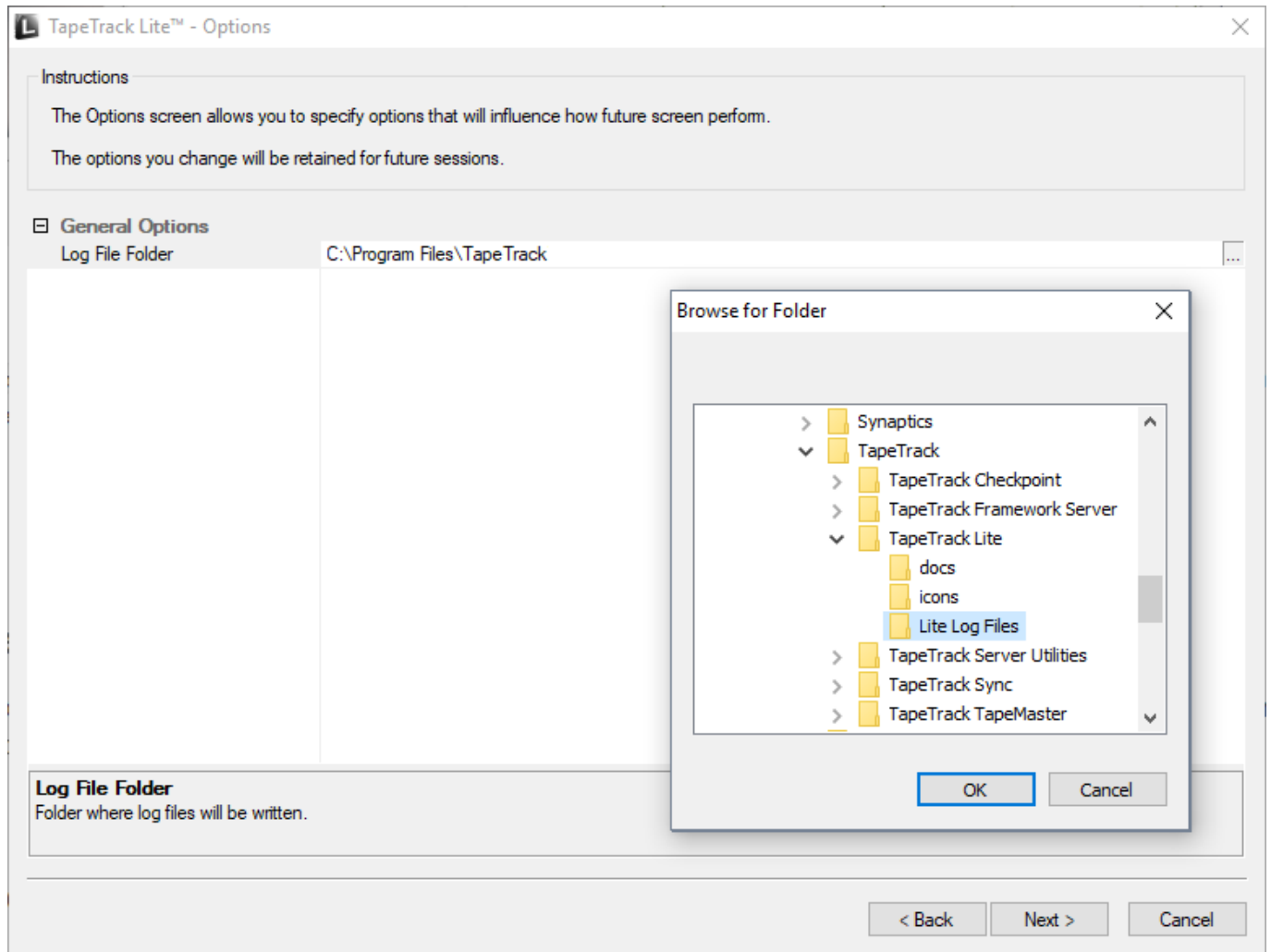


Options

This will open the **Options** window. If required you can set the location for the log files to be written to, or leave the default.

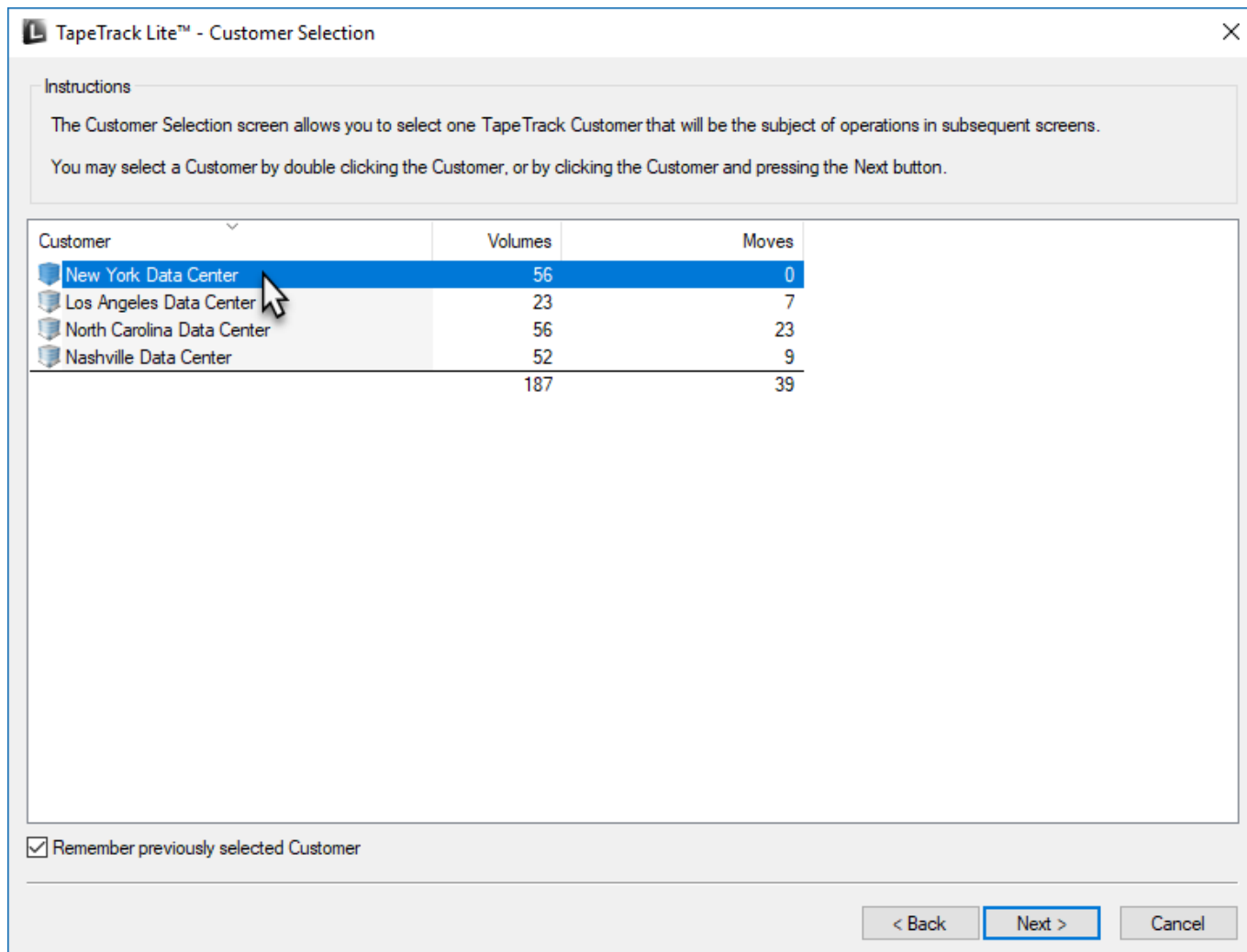
To change the default directory, click in the field to the right of the Log File Folder, click on the more options button (...). From the **Browse For File** window select the preferred directory and click OK.

Click Next to continue.



Selecting a Customer

From the **Customer Selection** window select a [Customer](#) that will be the subject of operations in subsequent screens by double-clicking a [Customer](#) or selecting a [Customer](#) and clicking Next.



Managing Media Types

The **Manage Media Library** window displays each of the [Volumes](#) separated into tabs by [Media](#) type. Each [volume](#) is displayed with its [Volume-ID](#) and current [Repository](#). The right of the window displays, in graphical format, the different [Repositories](#), the total number of [Volumes](#) as well as the [Volumes](#) flagged to move in or out of that [Repository](#).

TapeTrack Lite™ - Manage Media Library

Instructions

The Manage Media Library screen allows you to see each of your tape Volumes.

You can use the filters at the top of each column to select which Volumes to display.

If you wish to view or update the Next Move Date, Description or Extended Attributes of a specific Volume, simply select the Volume and edit the fields in the property list on the right.

Volume-ID	Location	Description
000000L6	Offsite Vault	
000002L6	Library	
000003L6	Offsite Vault	Monday Weekly
000004L6	Library	Wednesday Weekly
000005L6	Library	Friday Weekly
000006L6	Library	
000007L6	Offsite Vault	
000009L6	Offsite Vault	
000010L6	Offsite Vault	
000011L6	Library	
000012L6	Offsite Vault	
000013L6	Offsite Vault	Tuesday Weekly
000014L6	Offsite Vault	
000015L6	Offsite Vault	
000016L6	Library	
000017L6	Library	
000018L6	Offsite Vault	

Summary Panel:

- Offsite Vault:** 3 Outgoing, 15
- Library:** 3 Incoming, 14

Media Containers | LTO Cartridge

Navigation: < Back, Next >, Cancel

- **A** Volumes-ID & Repository
- **B** Volumes by Repository
- **C** Total Volumes in Repository
- **D** Volumes moving out
- **E** Volumes moving in
- **F** Media Type Tabs

To manage **Media**, select a **Volume** by clicking on the **Volume ID**.

When a **Volume** is selected the fields Next Move and Attributes can be edited.

To edit the Next Move Date click the button (...) in the Next Move text box to open up the **Next Move Date Selector**. Select the required Move Date

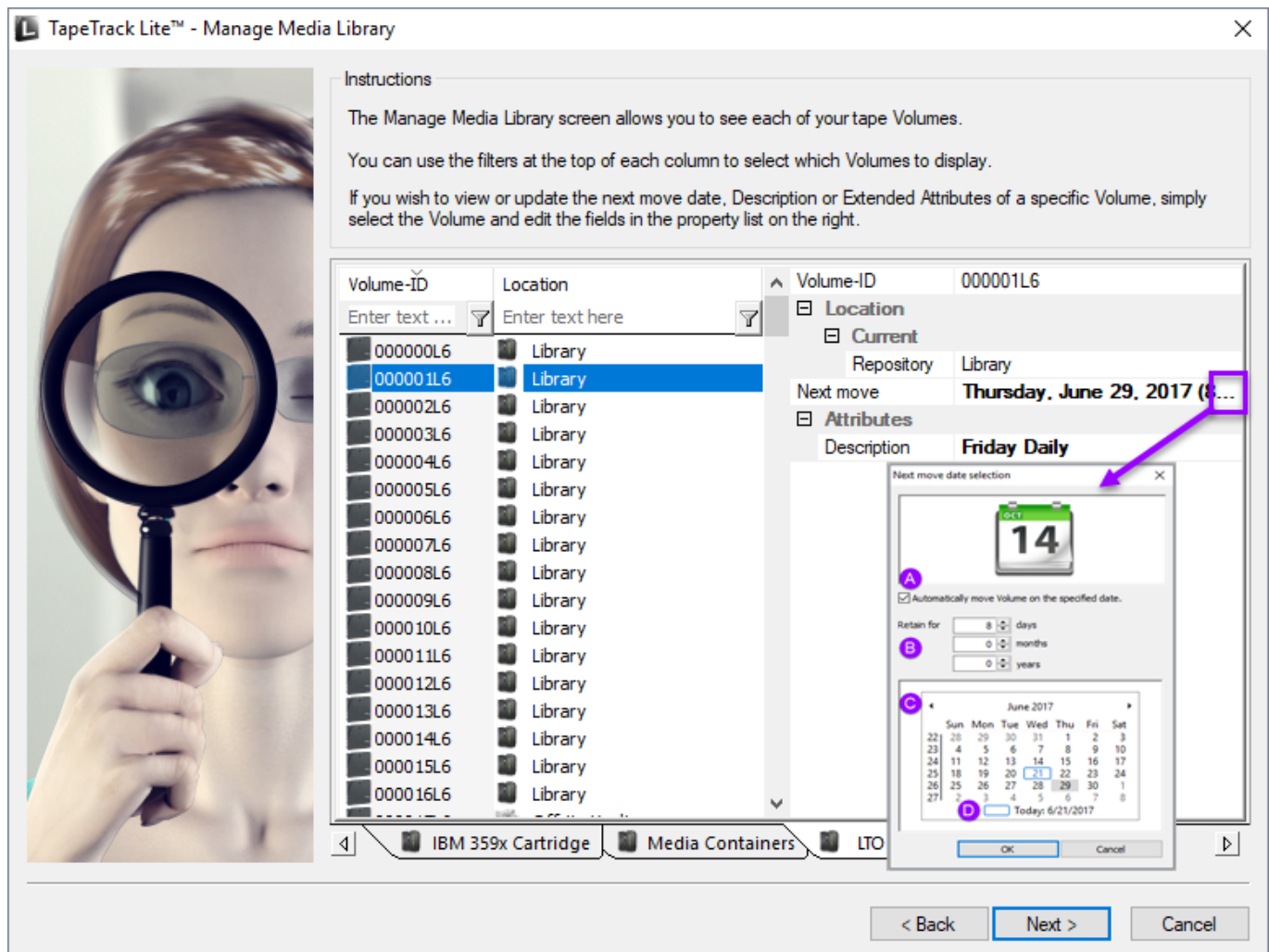
The Next Move Date can be set by selecting the required number of years, months and days in top input boxes or by scrolling through the calendar using the scroll arrows to go forward or backwards to select a specific date.

Clicking on the month or year displayed between the scroll arrows will alter scope from one month to one year to 12 years to 120 years to allow quick acquisition of the required date.

Clicking on a displayed selection will zoom the scope inwards by incrementing steps until your back at a one month display. When displaying one month at a time, clicking on Today at the bottom of the calendar will return you to today's date.

Click OK to close the window.

To edit the Attribute/s click in the field to the right of the attribute (default Description) and enter required value/s.



Notes

- **A** Click the Automatically move **Volume** on the specified date check box to open up the **Calendar Input**.
- **B** Input time offset to automatically select Move Date.
- **C** Scroll and select to manually set Move Date.
- **D** Click checkbox to set today as the Move Date.

When all **Volume** alterations are complete click Next.

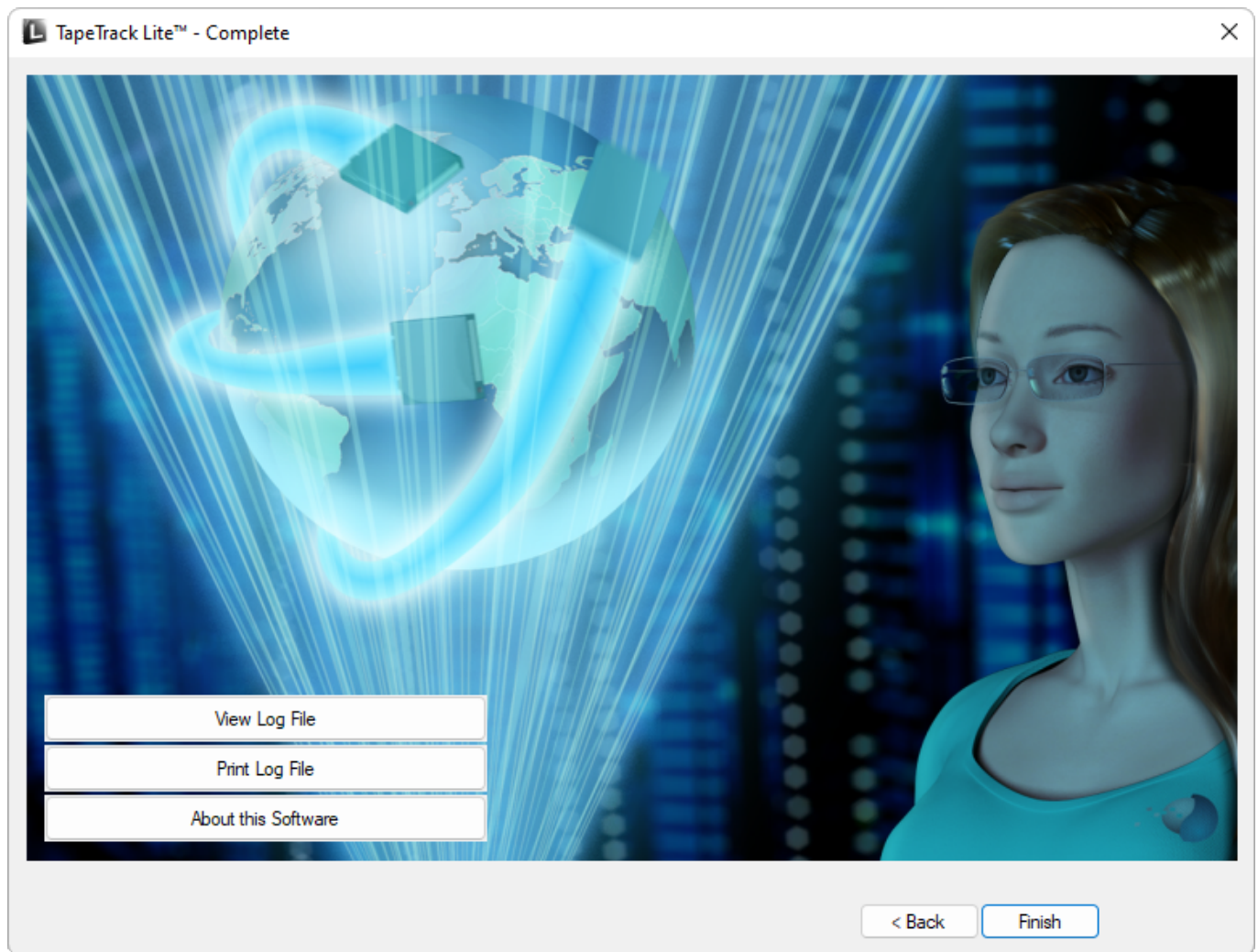
Complete

This will bring up the **Complete** window, from here you can:

- Click View Log File to view the log.
- Click Print Log File to print out the log file for further reference.
- Click About this Software to view product and support (email, phone & website)

information.

- Click Back to return to start menu and select another task.
- Click Finish, Cancel or X to exit TapeTrack Lite.



From:
<https://rtfm.tapetrack.com/> - **TapeTrack Documentation**

Permanent link:
https://rtfm.tapetrack.com/lite/function_volume_management?rev=1543808233

Last update: **2025/01/21 22:07**

