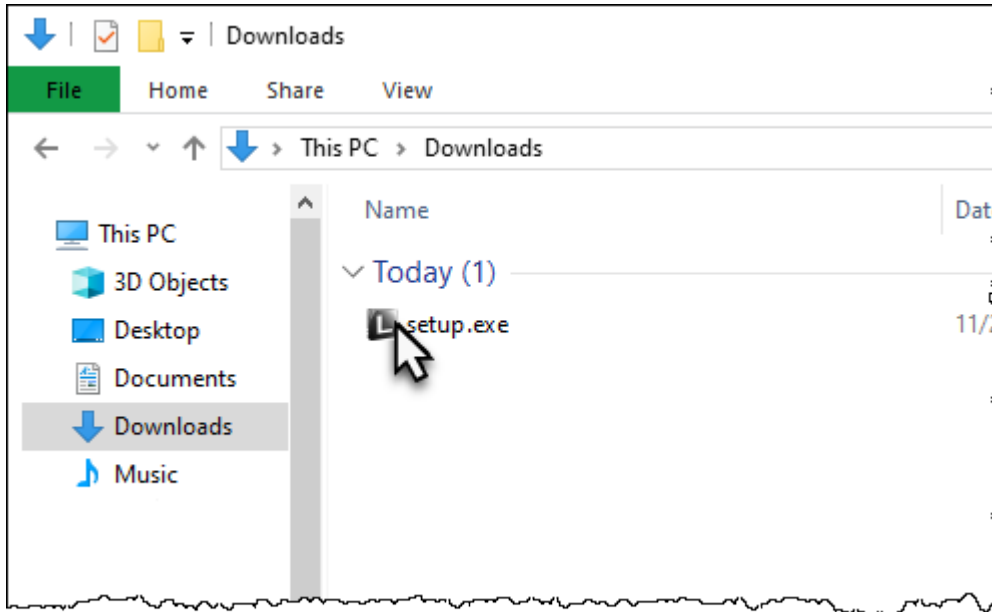


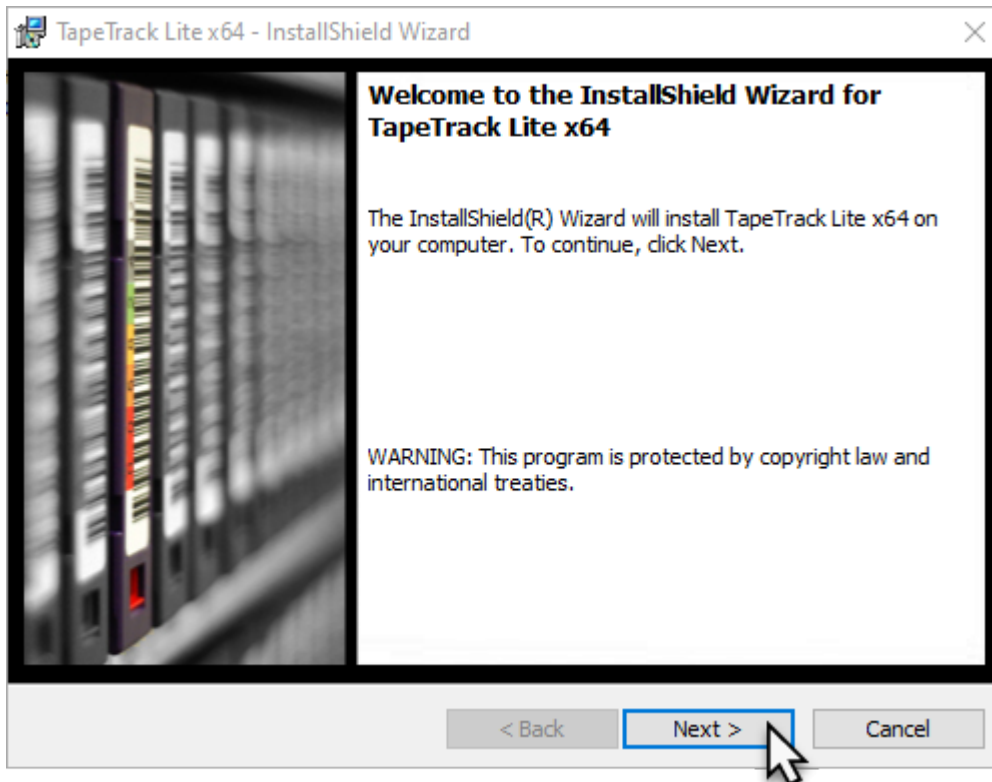
Installing the Software

The TapeTrack Lite Software installs automatically via an InstallShield installer.

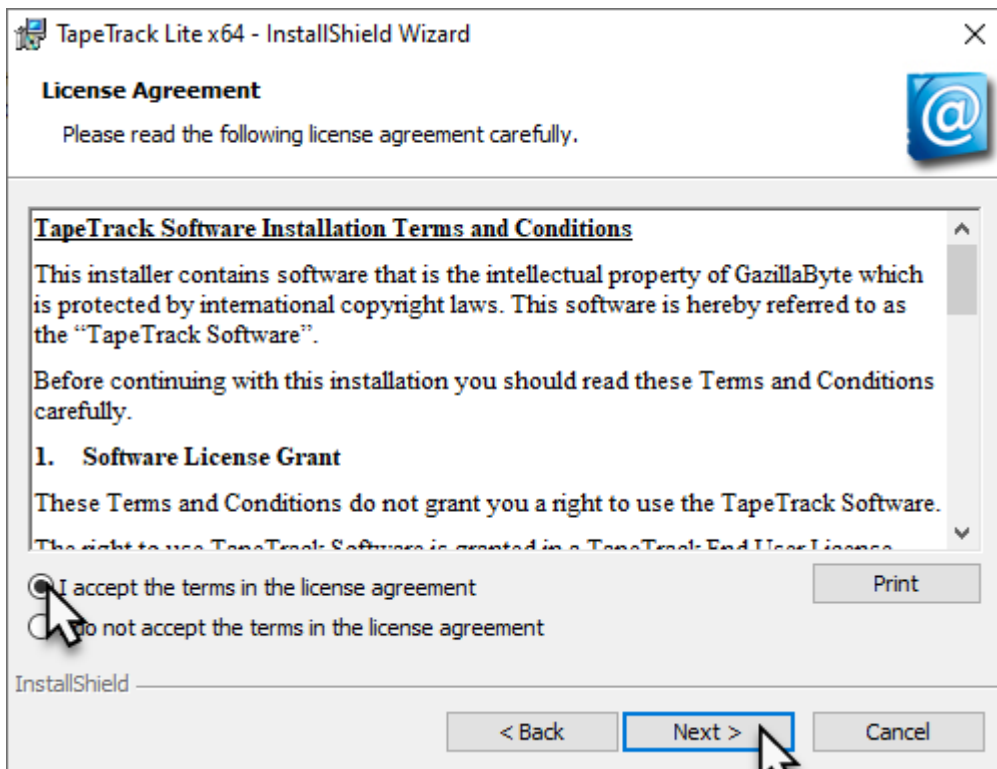
Locate the executable you downloaded, setup.exe, and double click to initiate the installation.



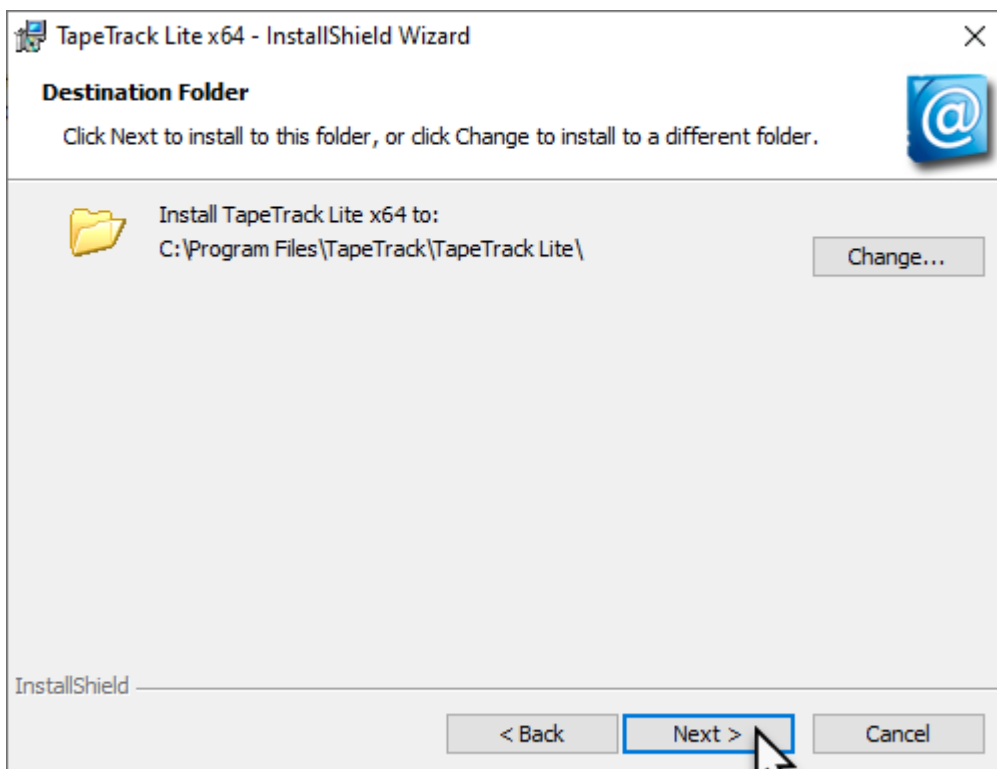
Click Next > to start the Install Shield Wizard.



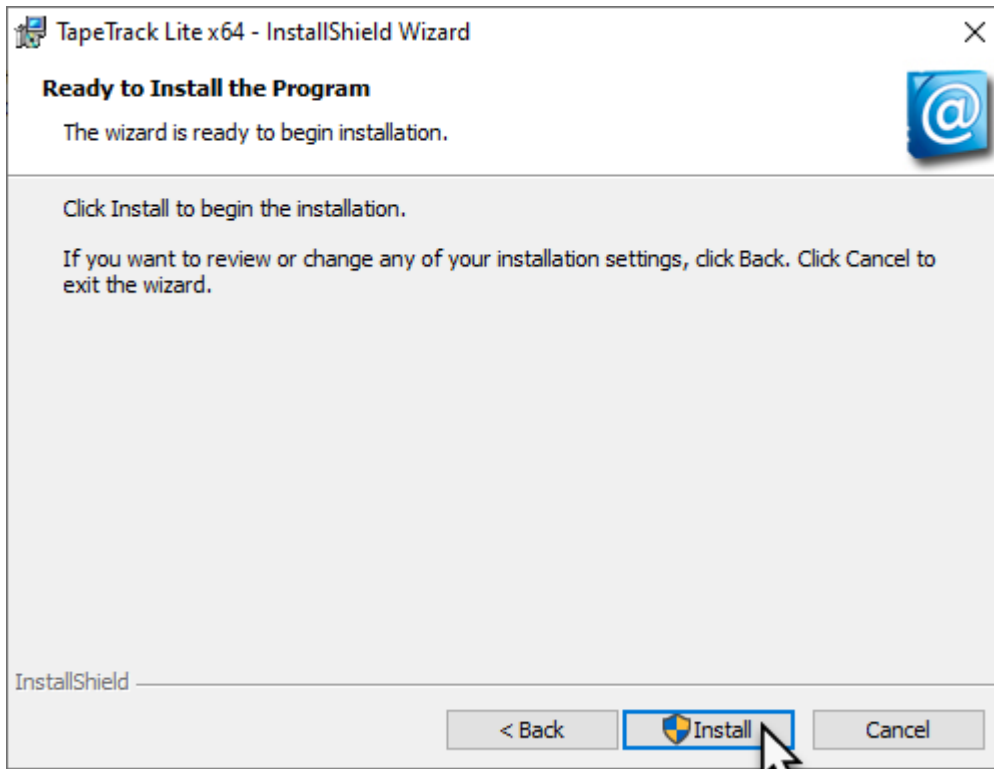
After reading and agreeing to the License Agreement click I accept the terms in the license agreement and Next > to proceed



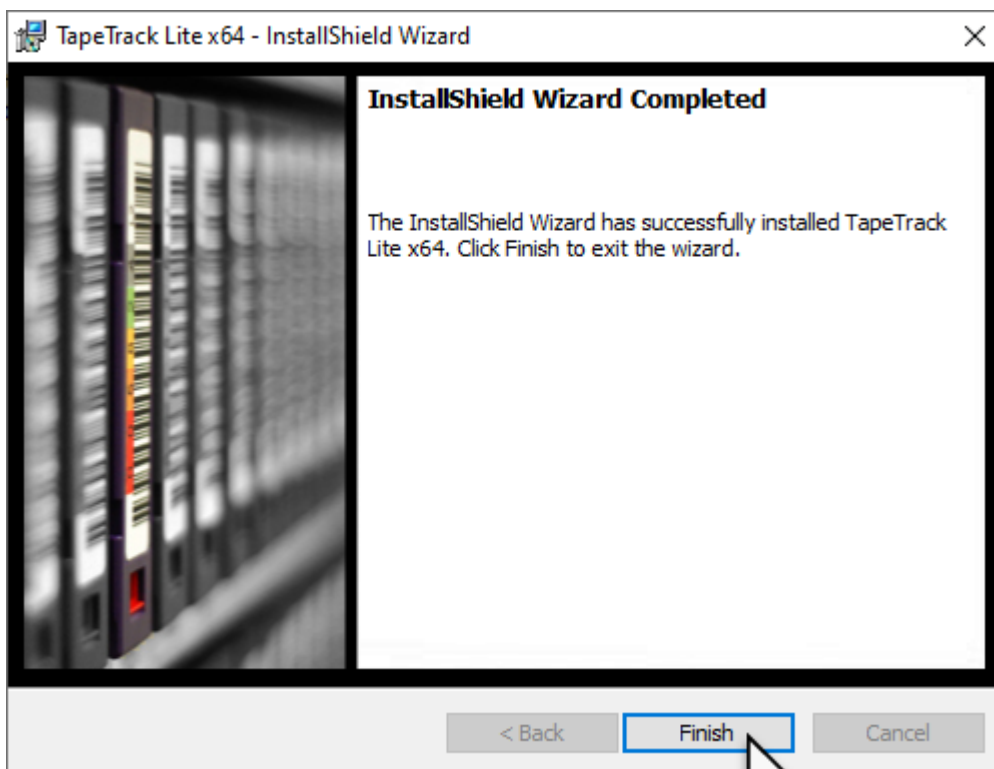
Confirm the installation directory is correct, or click Change to select another installation directory. Click Next > to proceed.



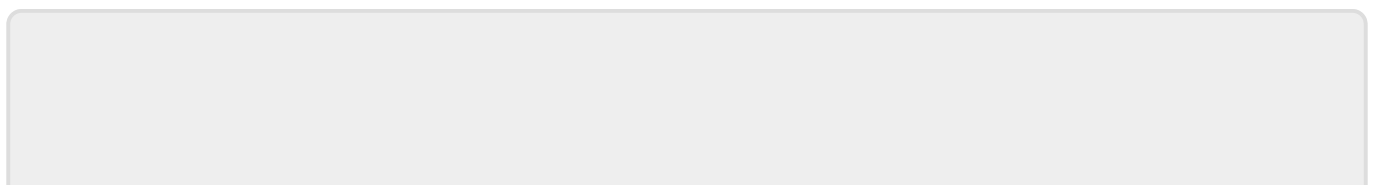
Click Install to begin the installation



Click Finish to exit the installer.



2021/11/11 01:51 · Scott Cunliffe



From:

<https://rtfm.tapetrack.com/> - **TapeTrack Documentation**

Permanent link:

<https://rtfm.tapetrack.com/lite/installing?rev=1636597283>

Last update: **2025/01/21 22:07**

