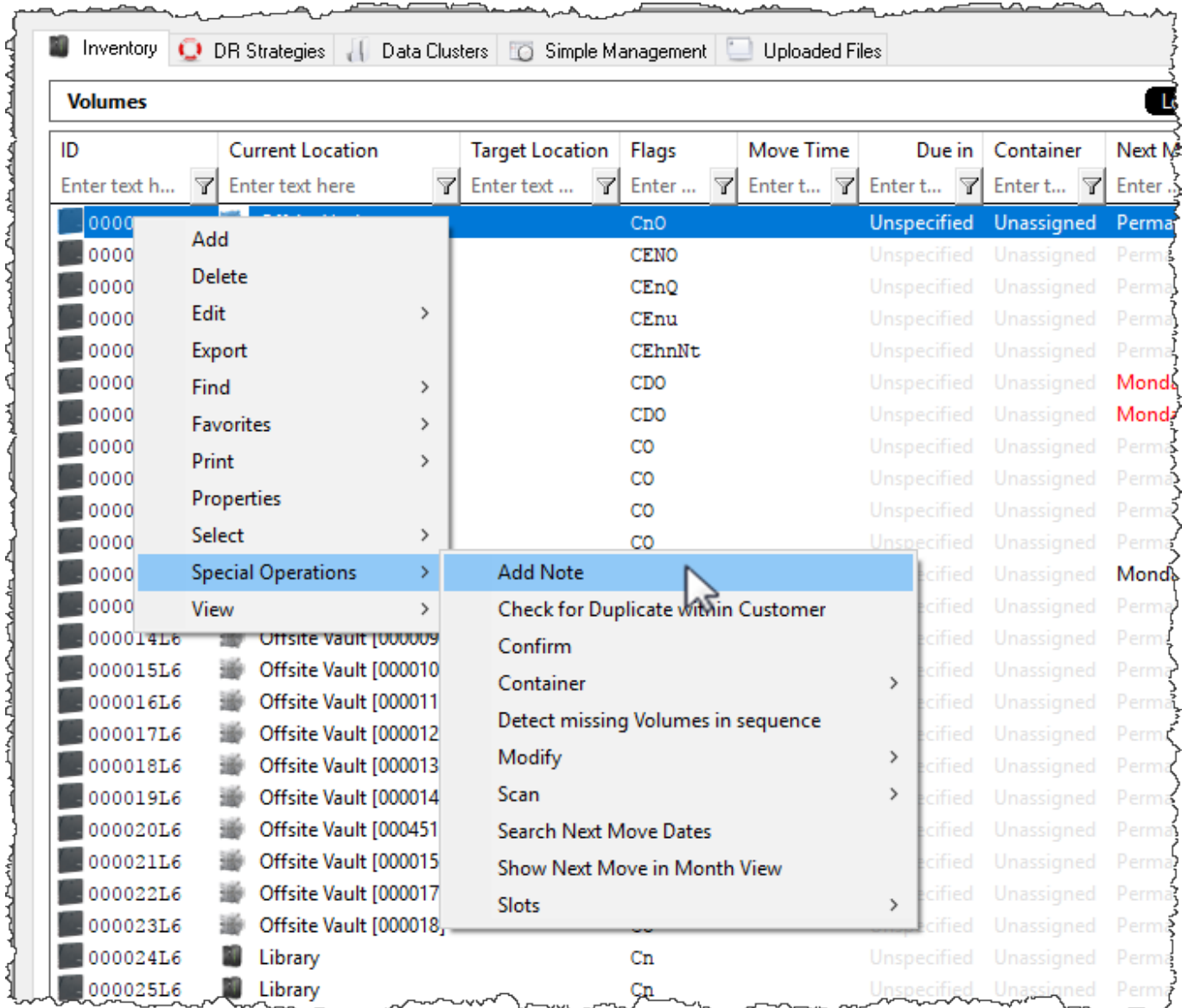


Add Note

Adding A Note Via Special Operations Menu

To add a note to a [volume](#) right-click on the [volume](#) and select [Special Operations](#) → [Add Note](#).



Options

- **Relevance Date:** Sets the date when this issue will become relevant. Relevance dates are not currently searchable.
- **Follow-Up Date:** Sets the date when this issue should be addressed by. Follow-up dates are not currently searchable.
- **Note:** The Note field should have the note to be added to the [Volume](#).

Add Note ✕

Note

Please note that this note is non-deletable. It should also be noted that in some jurisdictions any notes entered may be subject to Corporate Governance, Privacy and Libel Laws.

Relevance Date	Monday, October 30, 2017
Follow-up Date	Tuesday, October 31, 2017
Note Text	Check volume for write errors

Notes can be searched using the [Volume Notes Search](#) function.

From:
<https://rtfm.tapetrack.com/> - **TapeTrack Documentation**

Permanent link:
https://rtfm.tapetrack.com/master/add_note?rev=1541031588

Last update: **2025/01/21 22:07**

