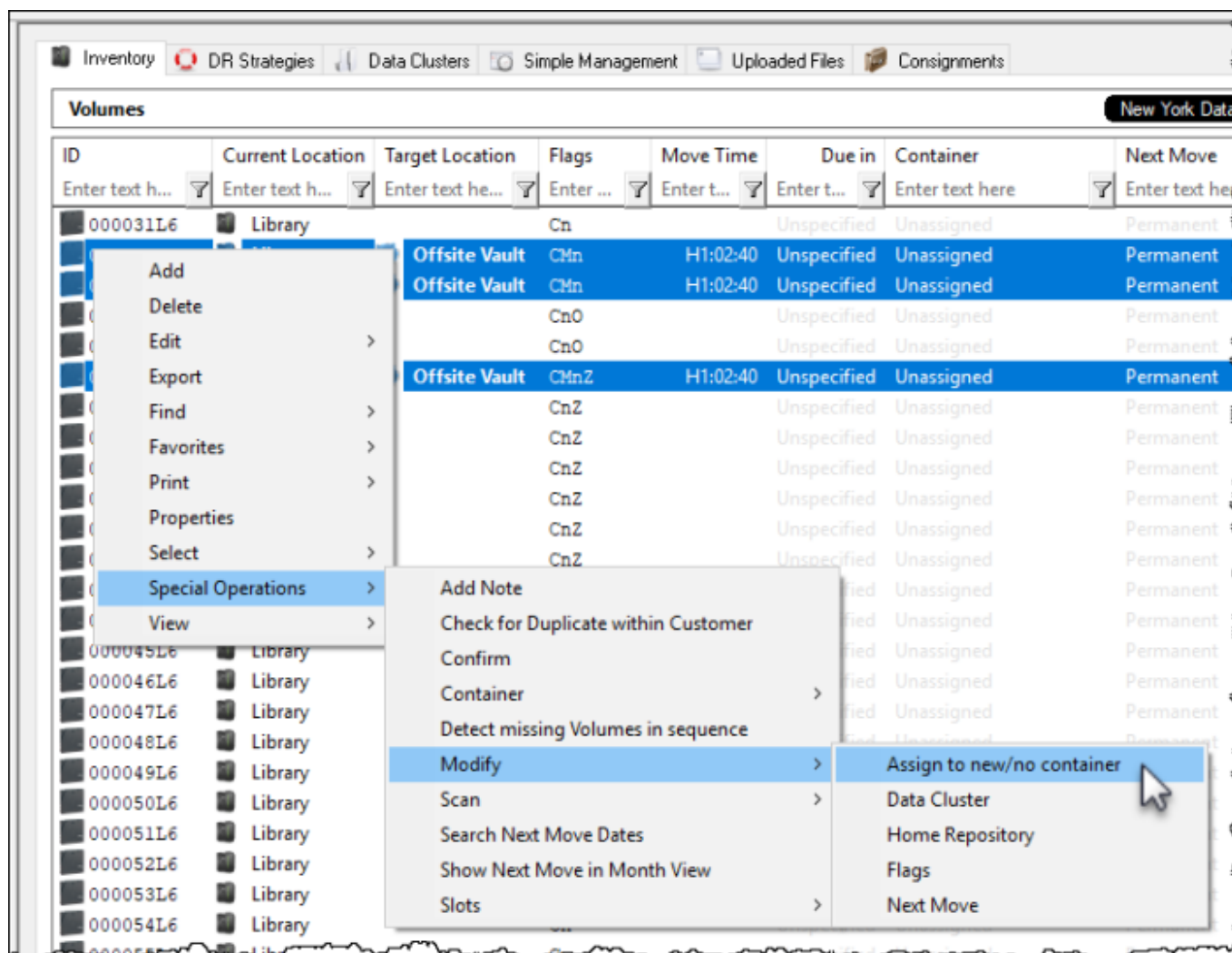


Adding Volumes To Container

[master_volume-to_container.mp4](#)

Select a volume or range of volumes (shift + click and or control + click) from the inventory window to assign to a container.

Right Click highlighted volume/s and select Special Operations→Modify→Assign to new/no container.



Select the required container from the displayed list and click OK.

The screenshot shows a 'Container Selection' dialog box with a table of containers. The table has four columns: Barcode, Capacity, Used, and Description. The 'Barcode' column has a search filter 'Enter text here'. The 'Capacity' and 'Used' columns have filters 'Ent...'. The 'Description' column has a filter 'Enter text here'. The row 'US01.CONT.CONT003' is highlighted in blue. A mouse cursor is pointing at the 'Used' column of this row. At the bottom of the dialog, it says 'List contains 37 records', 'Selected=1', and 'First Selected=5'. There are 'OK' and 'Cancel' buttons at the bottom right.

Barcode	Capacity	Used	Description
US03.LTO.CONT202	20	20	<Empty>
US03.LTO.CONT203	20	19	<Empty>
US01.CONT.CONT001	0	3	<Empty>
US01.CONT.CONT002	0	0	<Empty>
US01.CONT.CONT003	0	0	<Empty>
US01.CONT.CONT004	0	0	<Empty>
US01.CONT.CONT005	0	0	<Empty>
US01.LTO.CONT201	0	0	<Empty>
US03.CONT.0000	0	0	<Empty>
US03.CONT.0009	0	0	<Empty>
US03.CONT.0010	0	1	<Empty>
US03.CONT.0011	0	0	<Empty>
US03.CONT.0012	0	0	<Empty>
US03.CONT.0013	0	0	<Empty>
US03.CONT.0014	0	0	<Empty>
US03.CONT.0015	0	0	<Empty>
US03.CONT.0016	0	0	<Empty>
US03.CONT.0017	0	0	<Empty>
US03.CONT.0018	0	0	<Empty>
US03.CONT.0019	0	1	<Empty>
US03.CONT.0020	0	0	<Empty>
US02.LTO.000035L6	0	0	<Empty>
US01.CONT.CONT006	0	0	<Empty>
US01.CONT.CONT007	0	0	<Empty>
US01.CONT.CONT008	0	0	<Empty>
US01.CONT.CONT009	0	0	<Empty>

If you have a large quantity of containers for multiple customers, filtering results on barcode values (e.g. **US01*** for all US01 containers) can simplify the selection by removing unwanted containers from the display.

Container Selection

Select no Container

Barcode	Capacity	Used	Description
US01*	Ent...	Ent...	Enter text here
US01.CONT.CONT001	0	3	<Empty>
US01.CONT.CONT002	0	0	<Empty>
US01.CONT.CONT003	0	0	<Empty>
US01.CONT.CONT004	0	0	<Empty>
US01.CONT.CONT005	0	0	<Empty>
US01.LTO.CONT201	0	0	<Empty>
US01.CONT.CONT006	0	0	<Empty>
US01.CONT.CONT007	0	0	<Empty>
US01.CONT.CONT008	0	0	<Empty>
US01.CONT.CONT009	0	0	<Empty>
US01.CONT.CONT010	0	0	<Empty>
US01.CONT.CONT011	0	0	<Empty>
US01.CONT.CONT012	0	0	<Empty>
US01.CONT.CONT013	0	0	<Empty>
US01.CONT.CONT014	0	0	<Empty>
US01.CONT.CONT015	0	0	<Empty>
US01.CONT.CONT016	0	0	<Empty>
US01.CONT.CONT017	0	0	<Empty>
US01.CONT.CONT018	0	0	<Empty>
US01.CONT.CONT019	0	0	<Empty>
US01.CONT.CONT020	0	0	<Empty>

List contains 21 records Selected=1 First Selected=3

OK Cancel

Other filters, container capacity, container content quantity (ie. use 0 for empty containers) or description can also be used to narrow results for container selection.

Click OK to save results and exit back to the inventory window.

From: <https://rtfm.tapetrack.com/> - **TapeTrack Documentation**

Permanent link: https://rtfm.tapetrack.com/master/add_volume_container_inventory?rev=1535418036

Last update: **2025/01/21 22:07**

