

Active User

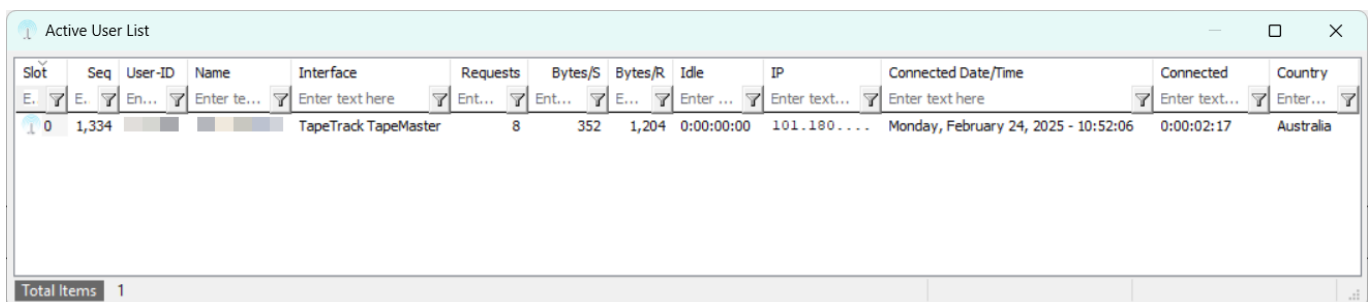
Overview

The active user function displays a snapshot of current users logged into the TapeTrack Server.

Active User List

The active user list displays information about the users currently connected to the TapeTrack Server. The display includes:

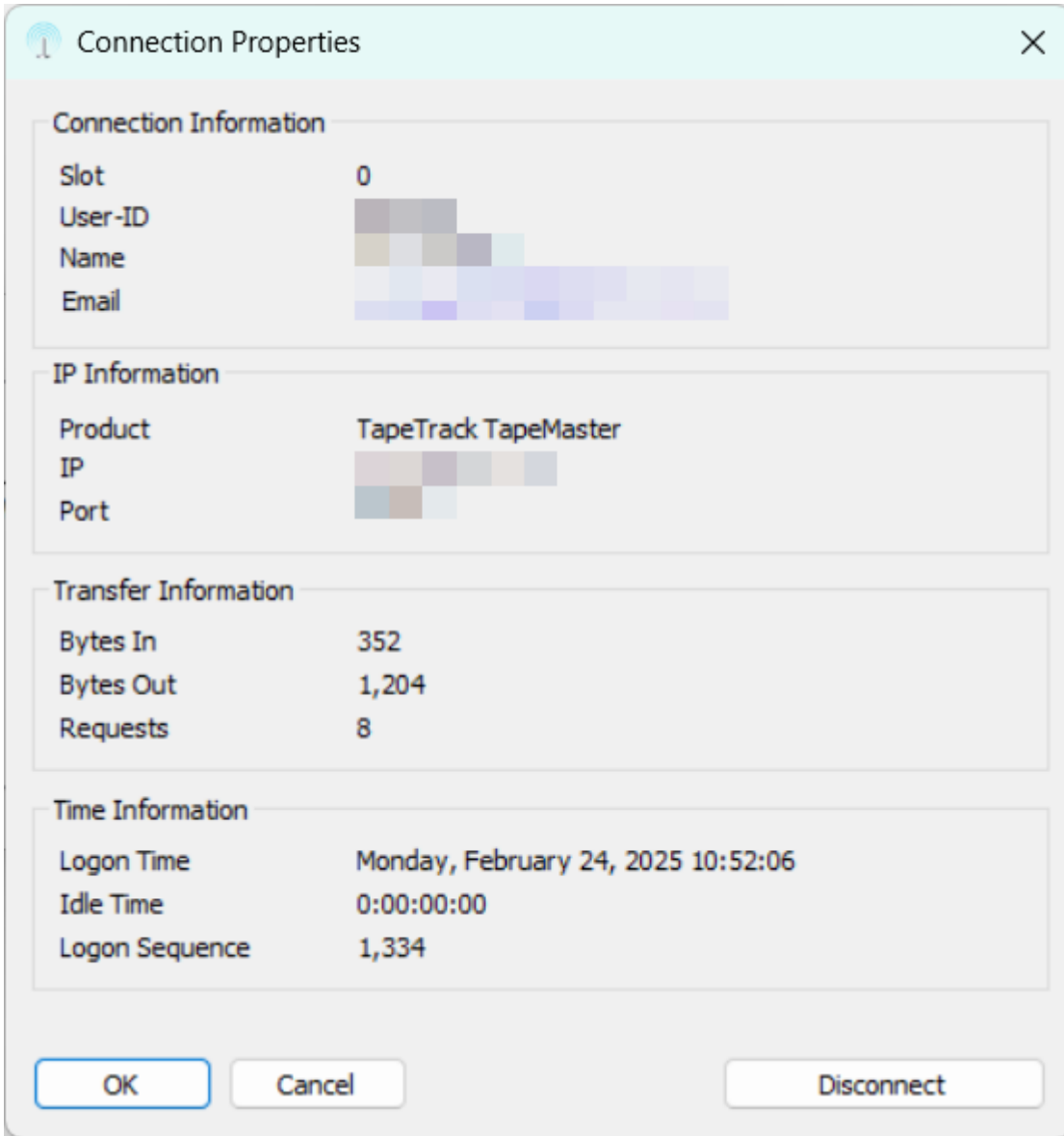
- Slot
- Sequence
- User-ID
- User Name
- Interface
- Requests
- Bytes Sent
- Bytes Received
- Idle time
- IP Address
- Connected Date and Time
- Time Connected



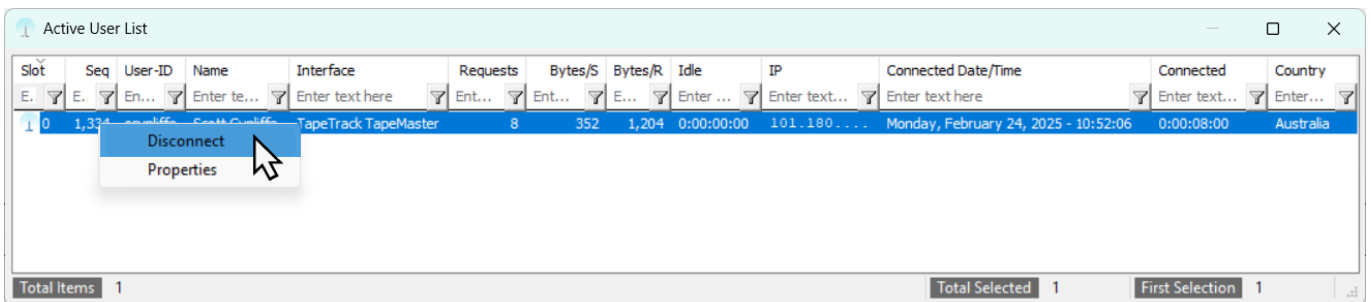
Slot	Seq	User-ID	Name	Interface	Requests	Bytes/S	Bytes/R	Idle	IP	Connected Date/Time	Connected	Country
0	1,334		TapeTrack TapeMaster	TapeMaster	8	352	1,204	0:00:00:00	101.180...	Monday, February 24, 2025 - 10:52:06	0:00:02:17	Australia

Total Items 1

Double clicking, or right clicking and selecting **properties**, will open a connection properties display window for the selected user (or range of users). This will display the above information as well as connection details such as the port access. This window also allows you to disconnect the selected user by clicking the **Disconnect** button.



Active users may also be disconnected by right clicking a user ID and selecting Disconnect.



From: <https://rtfm.tapetrack.com/> - **TapeTrack Documentation**

Permanent link: https://rtfm.tapetrack.com/master/admin_activeuser?rev=1502724170

Last update: **2025/01/21 22:07**

