

Active User

Overview

The active user function displays a snapshot of current users logged into the TapeTrack Server.

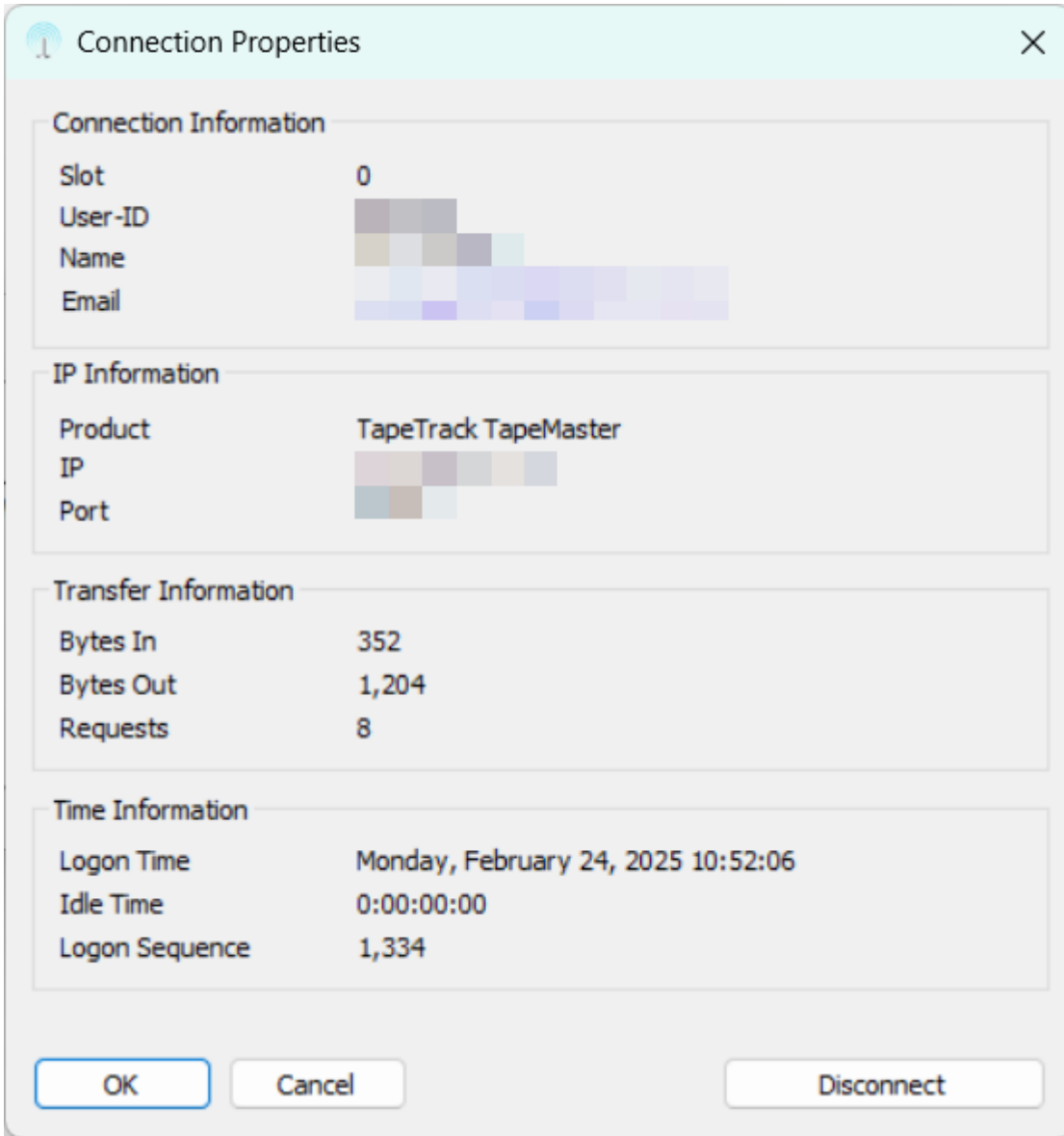
Active User List

The active user list displays information about the users currently connected to the TapeTrack Server. The display includes:

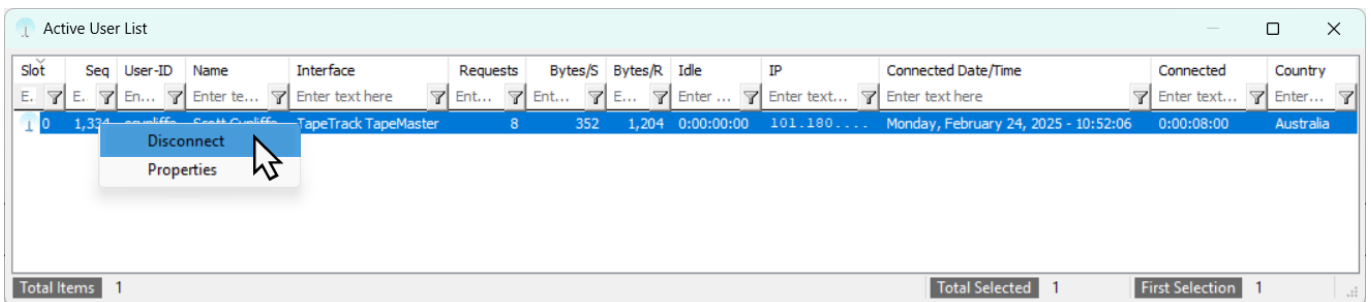
- Slot
- Sequence
- User-ID
- User Name
- Interface
- Requests
- Bytes Sent
- Bytes Received
- Idle time
- IP Address
- Connected Date and Time
- Time Connected

Slot	Seq	User-ID	Name	Interface	Requests	Bytes/S	Bytes/R	Idle	IP	Connected Date/Time	Connected	Country
0	1,334		TapeTrack	TapeMaster	8	352	1,204	0:00:00:00	101.180...	Monday, February 24, 2025 - 10:52:06	0:00:02:17	Australia

Double clicking, or right clicking and selecting properties, will open a connection properties display window for the selected user (or range of users). This will display the above information as well as connection details such as the port access. This window also allows you to disconnect the selected user by clicking the Disconnect button.



Active users may also be disconnected by right clicking a user ID and selecting Disconnect.



From: <https://rtfm.tapetrack.com/> - **TapeTrack Documentation**

Permanent link: https://rtfm.tapetrack.com/master/admin_activeuser?rev=1502815396

Last update: **2025/01/21 22:07**

