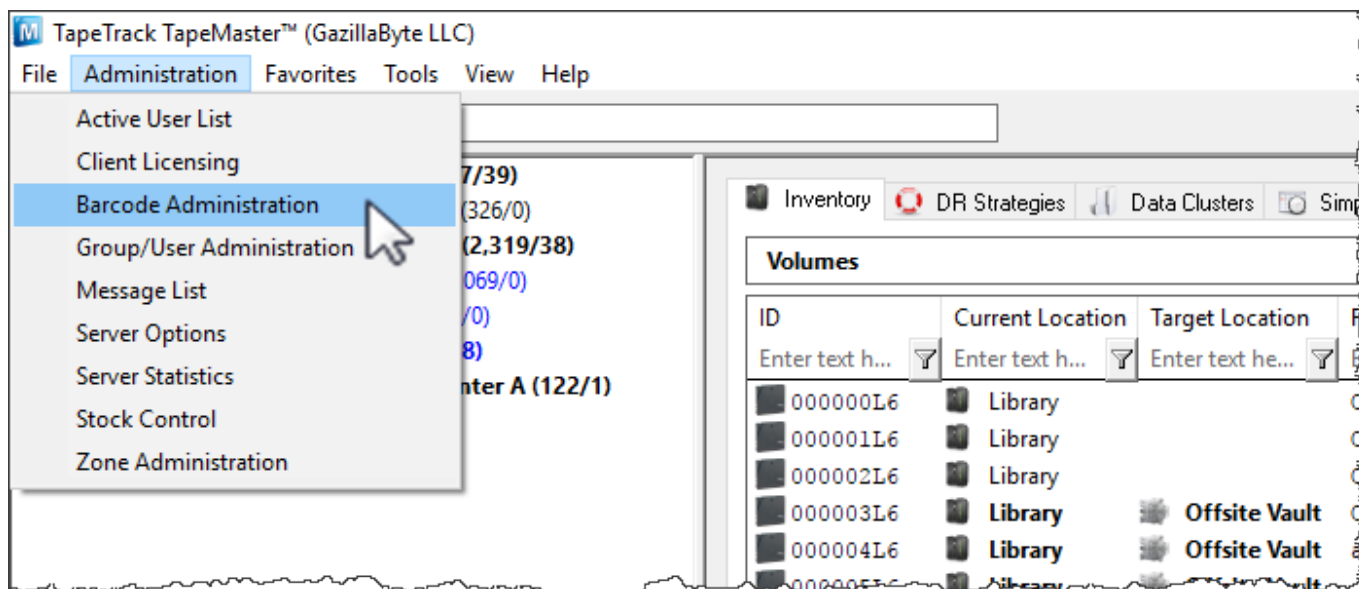


Barcode Administration

Barcode Administration is used to create and maintain Barcode Rules. Without Barcode Administration Rules set, Barcodes cannot be read while using the Barcode Scanning Window. Each Barcode Rule defines which characters in a given Barcode correspond with the Customer-ID, Media-ID, and Volume-ID.

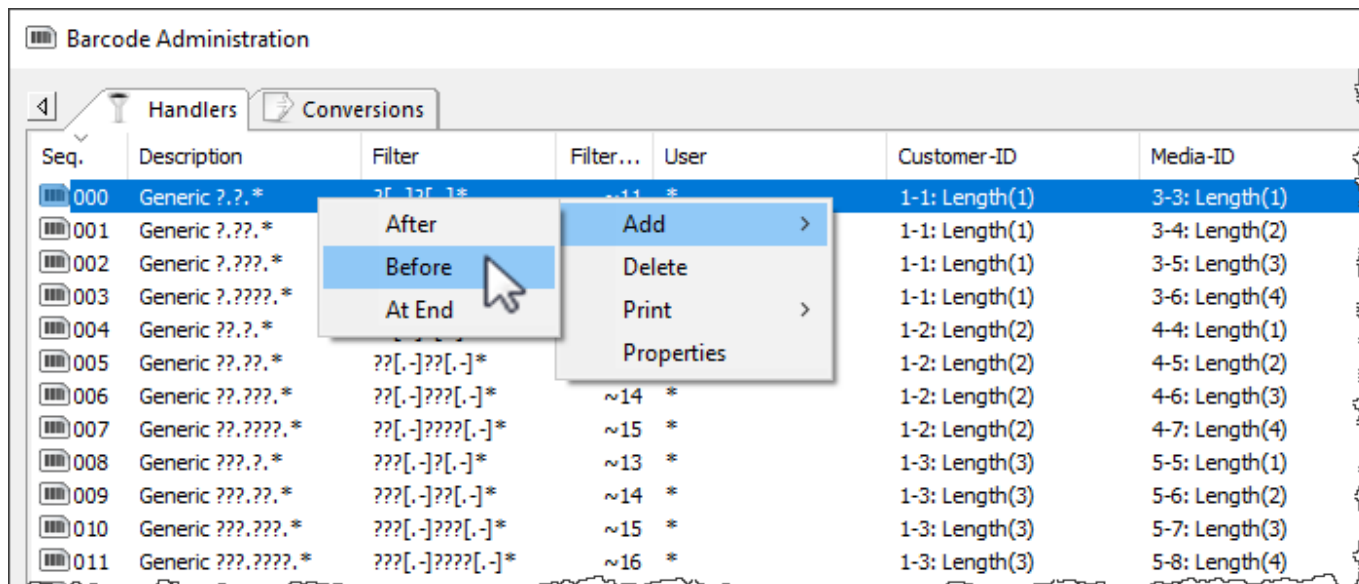
To add, view or modify a barcode rule open the barcode administration window by selecting Barcode Administration from the Administration menu.



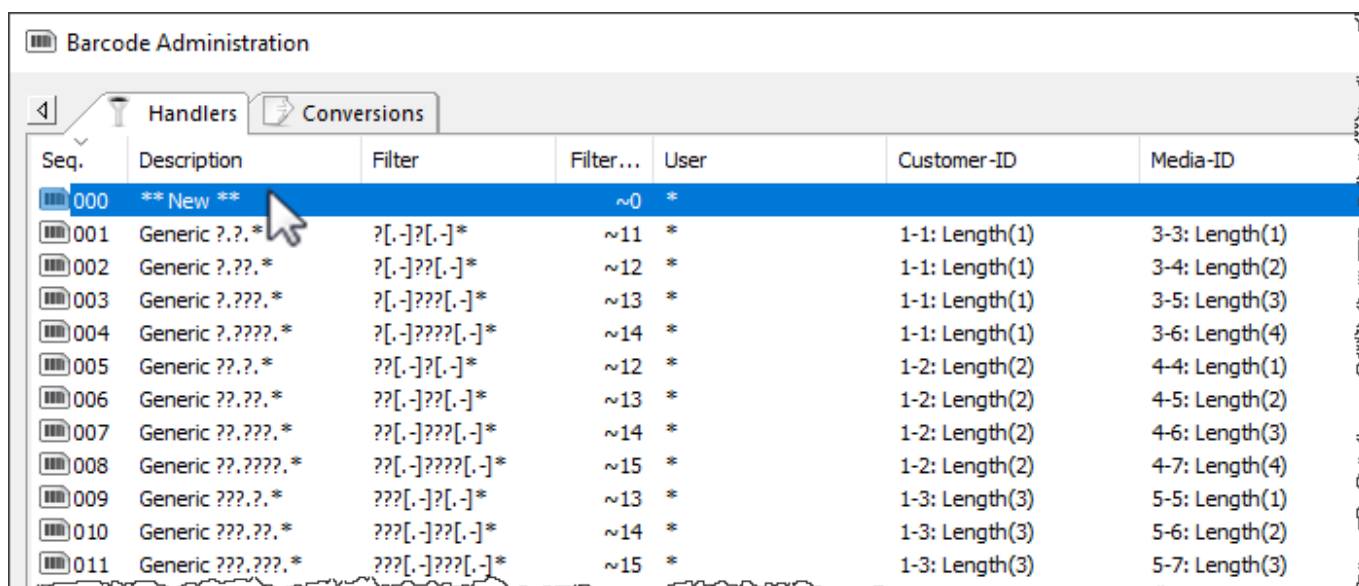
Add a Barcode Rule

Barcode rules are used to identify Volumes and route them to a specific Customer or Media Type. When a Barcode is scanned, TapeMaster will go through the Barcode Rule list from top to bottom to identify which rule must be followed to properly identify and direct that Volume. To add a Barcode Rule:

Right-click in the Barcode Administration window, hover the cursor over “Insert” and select “After”, “Before”, or “At End” or press the “Insert” key on the keyboard.



Double-click the rule ID for the barcode rule called * *New* * to set parameters.



Edit Barcode Window

The Edit Barcode window has four parameters:

- **General Details:** What is this Barcode Rule called?
- **Scope:** Which Barcodes will this Barcode Rule be applied to?
- **Editing:** Are there any characters that need to be removed from the Barcode before TapeMaster receives the string?
- **Elements:** Which characters in the Barcode correspond with the Customer-ID, Media-ID, and Volume-ID or can a Customer-ID, Media-ID, and Volume-ID be assumed?

Enabled	True
Barcode Description	Generic ????.???.*
Scope	
Barcode Pattern	????[-]???[-].*
User Pattern	*
Range Start	
Range End	
Editing	
Edit Mask	00000000000000000000
Strip Characters	
Elements	
Customer-ID	
Use substring	True
Substring First Character	1
Substring Last Character	4
Media-ID	
Use substring	True
Substring First Character	6
Substring Last Character	8
Volume-ID	
Use substring	True
Substring First Character	10
Substring Last Character	19

OK Cancel

General Details

- **Enabled:** When set to “True,” the Barcode Rule will be used to identify Volumes.
- **Barcode Description:** A brief description of the Barcode Rule.

Scope

- **Barcode Pattern:** The Barcode Pattern uses TapeTrack Filters to define what this type of Barcode looks like. For example, “????.???L[3-5]” would look for a 16 character barcode with periods in character positions 4 and 8, an L in character position 15 and any number between 3 and 5 in character position 16. If a scanned Barcode does not meet this pattern, the next Barcode Rule on the list will be referenced.
- **User Pattern:** Many enterprises include Customer-IDs in their User-IDs or have various other patterns to define a User. If this is the case, use TapeTrack Filters to enter patterns of Users that should have access to this rule. Using the asterisk (*) will make this Barcode Rule available to all Users.
- **Range Start / Range End:** Setting a range will set the scope of the Barcode Rule to a specific range of numbers or letters. For example, a Range of 000500L4 to 000750L4 will only apply this Barcode Rule to Volumes 000500L4 - 000750L4. Volumes below 000499L4 and above 000751L4 will require additional Barcode Rules.

Editing

The Editing subsection can be set to exclude specific characters from a barcode.

- **Edit Mask:** The Edit Mask will use 0's or 1's to determine which characters defined by the aforementioned Scope are to be used in TapeMaster. For example, if a Barcode is "BWIX.LTOX.000234L4" using the Edit Mask "000100001000000000" the "X" in character position 4 and character position 9 will be removed so that TapeMaster receives the Barcode as "BWI.LTO.000234L4".
- **Strip characters:** Similarly, the Strip Characters tool will remove specified characters in the Barcode. For example, if the letter is "X" is used in the Strip Characters field, Barcode "BWIX.LTOX.000234L4" will have the "X" characters removed so that the Barcode is received in TapeMaster as "BWI.LTO.000234L4".

Elements

- **Use substrings:** When set to "true" for a Customer-ID, Media-ID or Volume-ID, fields will appear to set "Substring First Character" and "Substring Last Character". These fields are used to set the range of the barcode that corresponds with the specified object ID. For example, in Barcode "BWI.LTO.000234L4" the Volume-ID begins with character 9 and ends with character 16, so the Substring First Character would be 9 and the Substring Last Character would be 16.
- **Literals:** When "Use Substrings" is set to "false" for a Customer-ID, Media-ID or Volume-ID, a field will appear that allows for the definition of literals. A "literal," in this context, is a Customer-ID, Media-ID or Volume-ID that can be assumed when the above Scope is used.

From:

<https://rtfm.tapetrack.com/> - **TapeTrack Documentation**

Permanent link:

https://rtfm.tapetrack.com/master/admin_barcode?rev=1502730678

Last update: **2025/01/21 22:07**

