

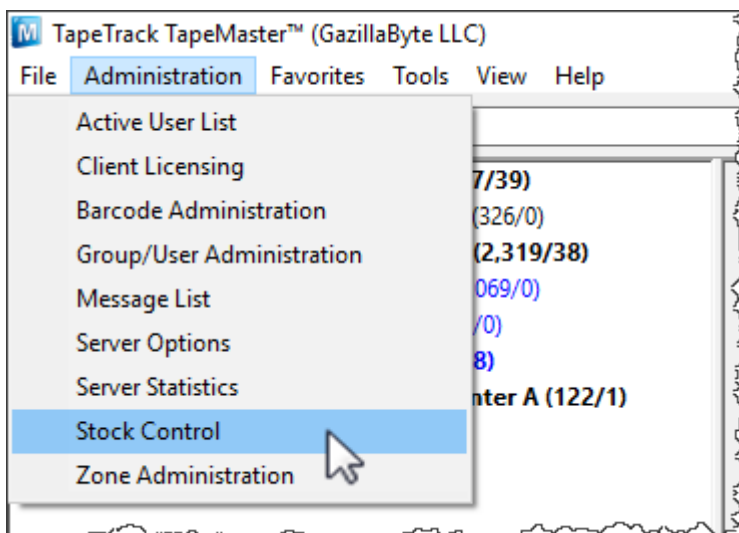
Stock Control

Overview

Stock control enables you to enter volumes into TapeTrack without barcodes, to manage current stock levels and track history of new stock usage.

Adding Stock Assignment Rules

Select, from the main menu, Administration - Stock Control to open the stock control window.



Right click and select properties, or double click, on the first available stock control ID.

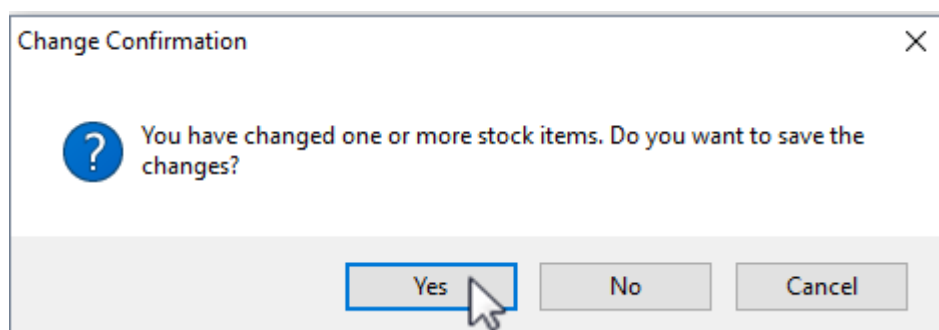


In the Stock Properties window:

- Description
 - Insert a descriptive name for the stock control rule, e.g. for all US customers and LTO4 volumes **US LTO 4**

- Filters
 - Add filter to select Customer ID/s that will use this rule. e.g. For all US customers **US***
 - Add Media type this rule applies to. e.g. **LTO**
 - Add volume filter to enforce correct volume ID association. e.g. For a 8 character ID ending in L4 **?????L4**
- Totals
 - Insert minimum stock number before you alerted of low stock levels (alert is a future enhancement).
 - Current total of volumes in stock (display only).
- Options
 - Change Enabled to true to make rule active.

Click OK once all data is correct and complete. Close the stock control window and click save to commit the new rule/s to the TapeTrack Database.



Adding Stock

Open the stock control window and double click on the rule you want to add stock to. *Click the Add Stock button and in the Count field add the new stock amount.* Click OK to update the stock level.

Stock Level Adjustment

To adjust the stock level numbers, if they are not correct for any reason, from the stock control window open the rule you want to adjust the volume level on. Click on the Stock Adjustment button and enter the correct number in the New Total field and click OK.

The screenshot shows the 'Stock Properties' window with a 'Stock Inventory' dialog box open. The dialog box displays a table with 'Description' and 'LTO Stock' columns. The 'New Total' is 200 and the 'Old Total' is 2002. The 'OK' button in the dialog is circled in purple with the number 3. In the background, the 'Stock Adjustment' button is circled with the number 1, and the 'OK' button at the bottom right of the main window is circled with the number 4.

Description	LTO Stock
New Total	200
Old Total	2002

Scan To Assign Volumes

The screenshot shows the 'Stock Properties' window with a 'Scan to Assign' dialog box open. The dialog box displays a large text field with '100013L4' and a barcode below it. To the right, there are icons for clipboard, print, and back. Below the barcode is a table with columns: Barcode, Customer, Media Type, Volume-ID, and Message. The table contains one row: Barcode: 100012L4, Customer: [icon], Media Type: [icon], Volume-ID: 100012L4, Message: Request OK. The 'OK' button in the dialog is circled in purple with the number 3. In the background, the 'Scan to Assign' button is circled with the number 1, and the 'OK' button at the bottom right of the main window is circled with the number 4.

Barcode	Customer	Media Type	Volume-ID	Message
100012L4	[icon]	[icon]	100012L4	Request OK

From: <https://rtfm.tapetrack.com/> - **TapeTrack Documentation**

Permanent link: https://rtfm.tapetrack.com/master/admin_stock_control?rev=1500571637

Last update: **2025/01/21 22:07**



