

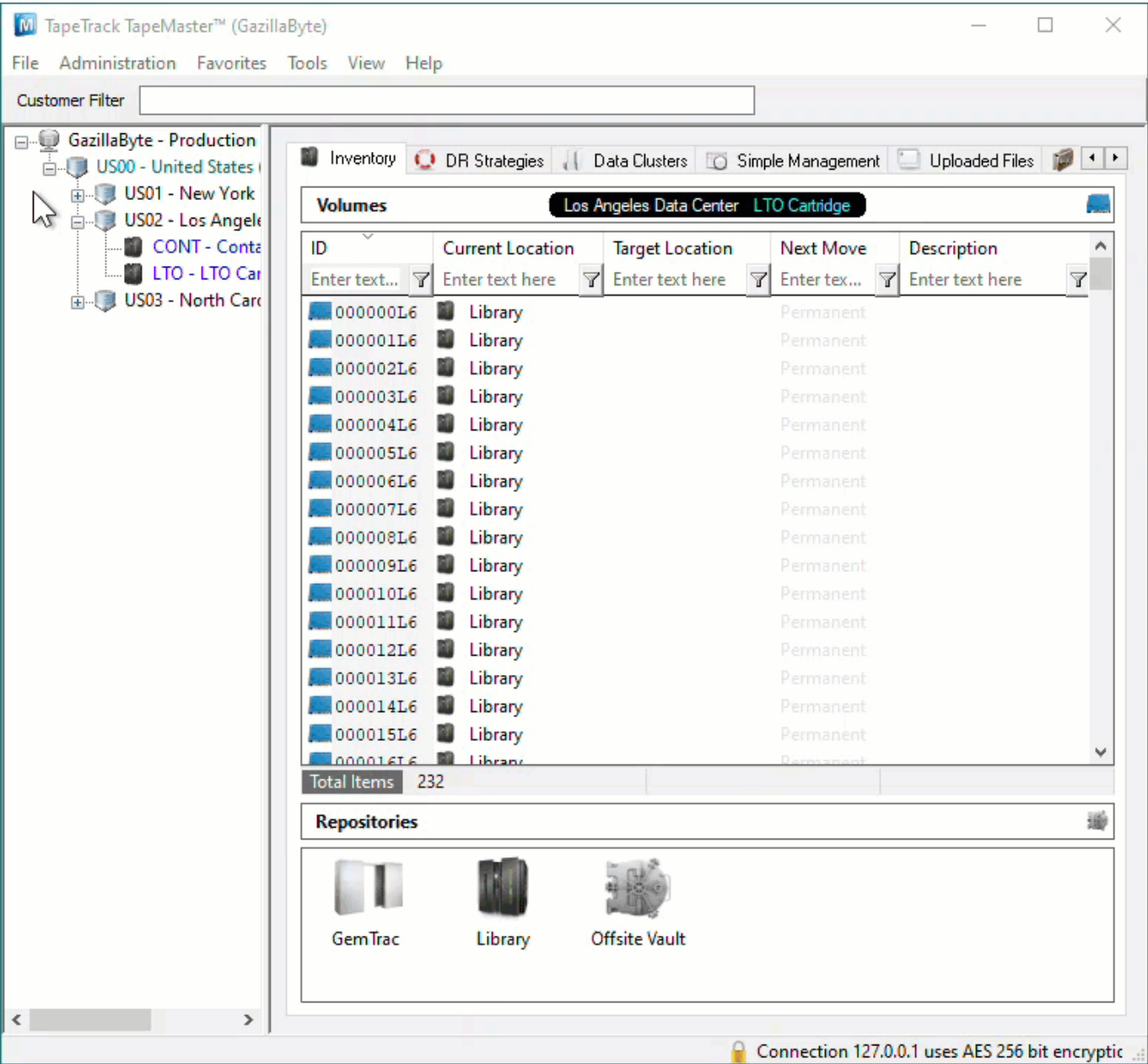
Adding and Maintaining a Zone

A **Zone** is a **TapeTrack Object** which represents a physical storage location.

Once created a **Zone** is then mapped to a **Repository** to keep track of where **Volumes** are allocated to a storage rack, shelf and slot number.

Adding a Zone

From the Main Menu, select Administration→Zone Administration.



From the Zone Tab, click in the Zone List Window, and then right-click to select Add from the Context Menu to open the New Zone window.

The Identity Tab

Identity tab the Zone properties:

- Properties
 - Zone Assignable ID for the Zone (1 to 10 alphanumeric characters).
 - Zone Description Description of the Zone (0 to 20 alphanumeric characters).
 - Customer filter (optional) Limits which [Customer-ID's](#) have access to the specific Zone when assigning Zones to a [Repository](#).
- Slots
 - Starting First Slot number for the Zone.
 - Ending Last Slot number for the Zone.
 - Slots/Level Number of Slots per level.

The screenshot shows a 'New Zone' dialog box with the 'Identity' tab selected. The dialog contains a tree view on the left with 'Properties' and 'Slots' expanded. The 'Properties' section has fields for 'Zone', 'Description', and 'Customer Filter'. The 'Slots' section has fields for 'Starting', 'Ending', and 'Slots/Level'. The 'Active' checkbox is checked, and its value is 'True'. At the bottom of the dialog are 'Save', 'Cancel', and 'Help' buttons.

Property	Value
Zone	
Description	
Customer Filter	
Active	True
Starting	0
Ending	0
Slots/Level	0

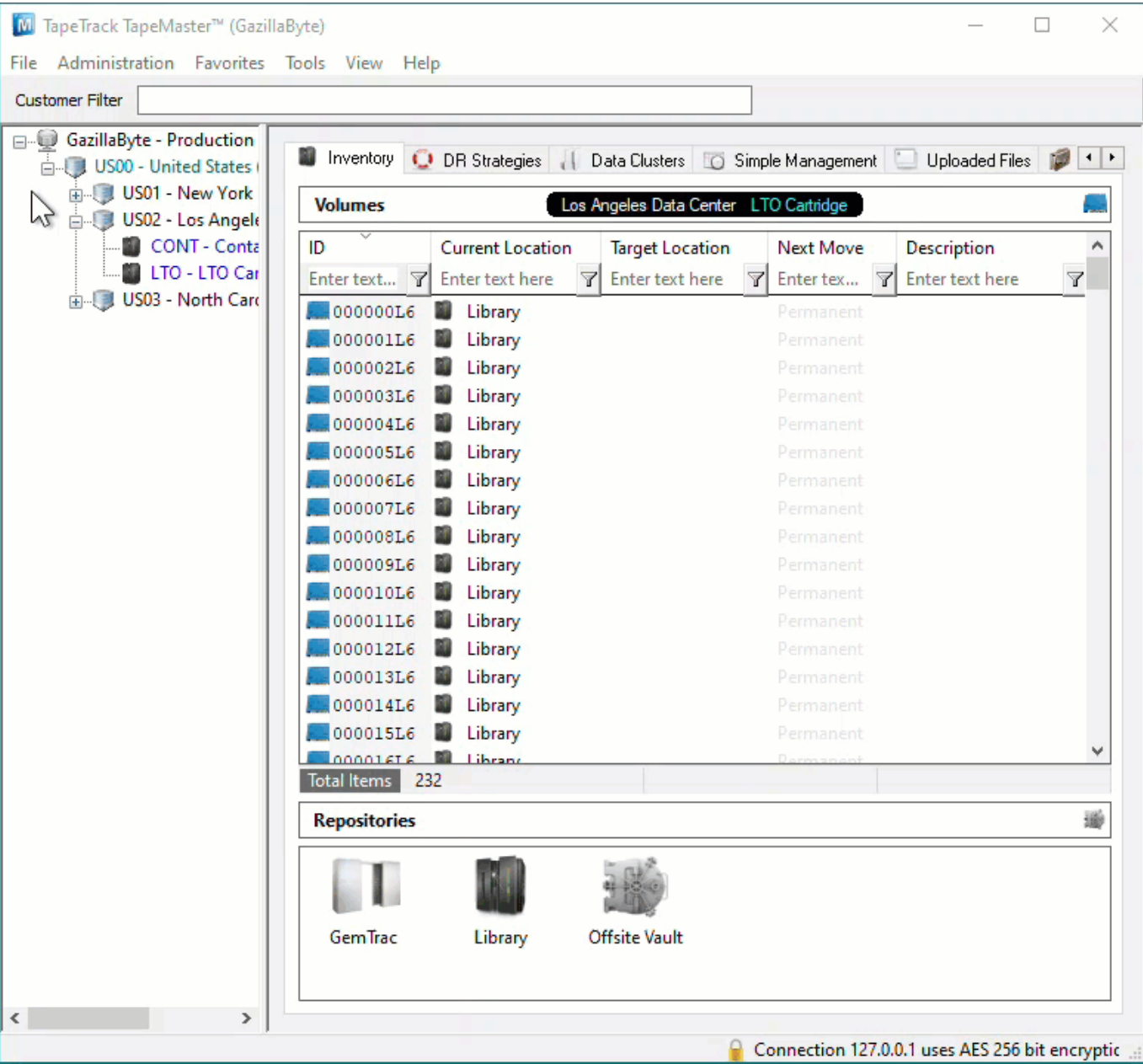
Once all values have been entered click Save to commit data.

Associated Instructions

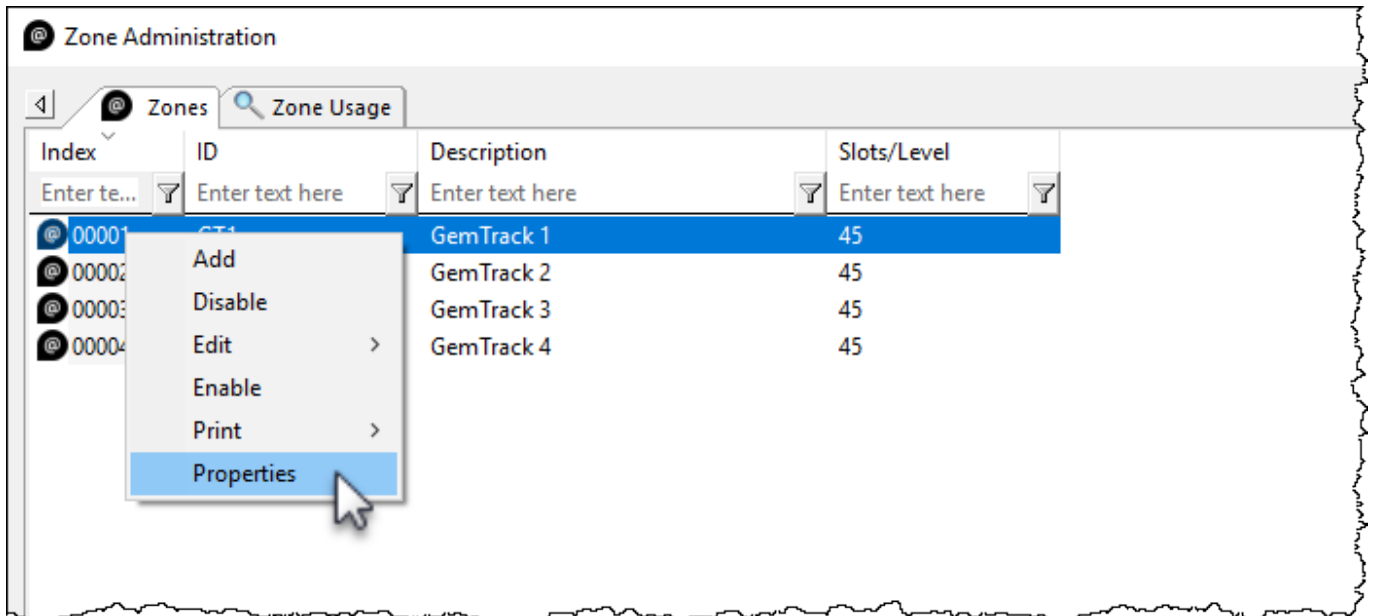
Once created, Zones can be then be mapped to one or more Repositories.

Maintaining a Zone

From the Main Menu, select Administration→Zone Administration.



From the Zone Administration window right-click the required Zone and select Properties or double-click the Zone index Number.



Identity

The Identity tab in the Edit Zone window:

- The Active check box allows you to enable or disable the Zone.
- Allows you to edit all fields except the Index Number.
 - Editing the ID and Description fields will not affect the allocation or usage of the Zones, it will only update the displayed names within TapeMaster.
 - Editing the capacity of the Zone is not recommended without first understanding how Zones and slot numbers are related. As Zones are mapped to a repository, the slot numbers are allocated sequentially. For example two cabinets with 100 volume capacity - the first cabinet will occupy slots 1 to 100, the second cabinet would occupy slots 101 to 200. If you increase the first cabinets capacity to 150, the second cabinet would now occupy slots 151 to 250. In this scenario a volume in slot 101 would be displayed as being in the second cabinet's first slot (it's physical location) but after the increase in capacity of the first cabinet it would be displayed in the first cabinet slot 101. This means any [Volumes](#) already slotted after slot 100 will now be shown in the wrong locations.
 - Editing the slots per level will affect the display in TapeMaster when viewing the slot allocation by **shelf:slot** and when using products like [CheckPoint](#) that direct the user to a slot via **zone:shelf:slot**.
 - Editing the **Customer** filter will expand, restrict or remove restrictions on which customers can view/use the Zone.
- Expanding the Update Statistics will display:
 - When
 - Date: Day, date and offset of Zone creation.
 - Time: Time of creation.
 - UTC Offset: UTC time offset of the connecting computer.
 - Time At Source: Local time at connecting computer.
 - Time Zone: Operating time zone of connecting computer.
 - From
 - Machine Name
 - Connection Count: Number of times computer has connected to server.
 - First Connection: First time computer connected to server.

- Last Connection: Last time computer connected to server.
- Interface: TapeTrack product used to connect to server.
- Operating System: Current operating system of connecting computer.
- As
 - User - ID: TapeTrack ID.
 - User Name: TapeTrack user name.

These fields are informational only and cannot be edited.

Edit Zone

Identity

Allocations

Usage

Properties

Zone

RackA1

Description

Green Rack

Customer Filter

US02

Active

True

Slots

Starting

1

Ending

600

Slots/Level

20

Update Statistics

When

Date

Tuesday, August 17, 2021 (0 days ago)

Time

15:06:19

UTC Offset

600 minutes

Time at source

Tuesday, August 17, 2021 - 15:06:19

Time Zone

AUS Eastern Standard Time

From

Machine Name

127.0.0.1 (GazillaByte)

Details

Connection Count

16

First Connection

Monday, August 16, 2021 - 11:01:35

Last Connection

Tuesday, August 17, 2021 - 12:21:51

Interface

TapeTrack TapeMaster

Operating System

Windows

As

User-ID

doco

User Name

doco

Update Statistics

Save

Cancel

Help

Allocations

The Allocations tab displays information about Zone Allocation and usage details.

This information includes:

- Customer
- Media
- Repository
- Start
- End
- Total
- Notes
- Used
- Free

Edit Zone

Identity

Allocations

Usage

Customer	Media	Repository	Start	End	Total	Notes	Used	%-Free
Enter te... <div></div>	E... <div></div>	Enter te... <div></div>	Ent... <div></div>	Ent... <div></div>	E.. <div></div>	E.. <div></div>	Ente... <div></div>	Enter text h... <div></div>

There are no items to display in this list.

Total Items0

Save

Cancel

Help

Usage

The Usage tab displays information about the current usage.

This information includes:

- Status Status of esc Slot, Allocated, Unallocated
- Z-Slot Shelf and Slot number
- C-ID Customer ID of Volume that is Slotted
- Customer Customer Description of Volume that is Slotted
- M-ID Media-ID of Volume that is Slotted
- R-ID Repository of Volume that is Slotted
- R-Slot
- Volume-ID
- Seq

Edit Zone

Identity

Allocations

Usage

Status	Z-Slot	C-ID	Customer	M-ID	R-ID	R-Slot	Volume-ID	Seq.
@ Unallocated	1.1					0		
@ Unallocated	1.2					0		
@ Unallocated	1.3					0		
@ Unallocated	1.4					0		
@ Unallocated	1.5					0		
@ Unallocated	1.6					0		
@ Unallocated	1.7					0		
@ Unallocated	1.8					0		
@ Unallocated	1.9					0		
@ Unallocated	1.10					0		
@ Unallocated	1.11					0		
@ Unallocated	1.12					0		
@ Unallocated	1.13					0		
@ Unallocated	1.14					0		
@ Unallocated	1.15					0		
@ Unallocated	1.16					0		
@ Unallocated	1.17					0		
@ Unallocated	1.18					0		
@ Unallocated	1.19					0		
@ Unallocated	1.20					0		
@ Unallocated	2.1					0		
@ Unallocated	2.2					0		
@ Unallocated	2.3					0		
@ Unallocated	2.4					0		
@ Unallocated	2.5					0		
@ Unallocated	2.6					0		
@ Unallocated	2.7					0		
@ Unallocated	2.8					0		
@ Unallocated	2.9					0		

Total Items 600

Save

Cancel

Help

From:

<https://rtfm.tapetrack.com/> - **TapeTrack Documentation**

Permanent link:

https://rtfm.tapetrack.com/master/admin_zone

Last update: **2025/01/21 22:07**

