

Zone Administration

Zone Administration gives you access to the Zone Administration window, from which you can add, remove or edit current zones as well as view slots currently in use through the Zone Usage tab.

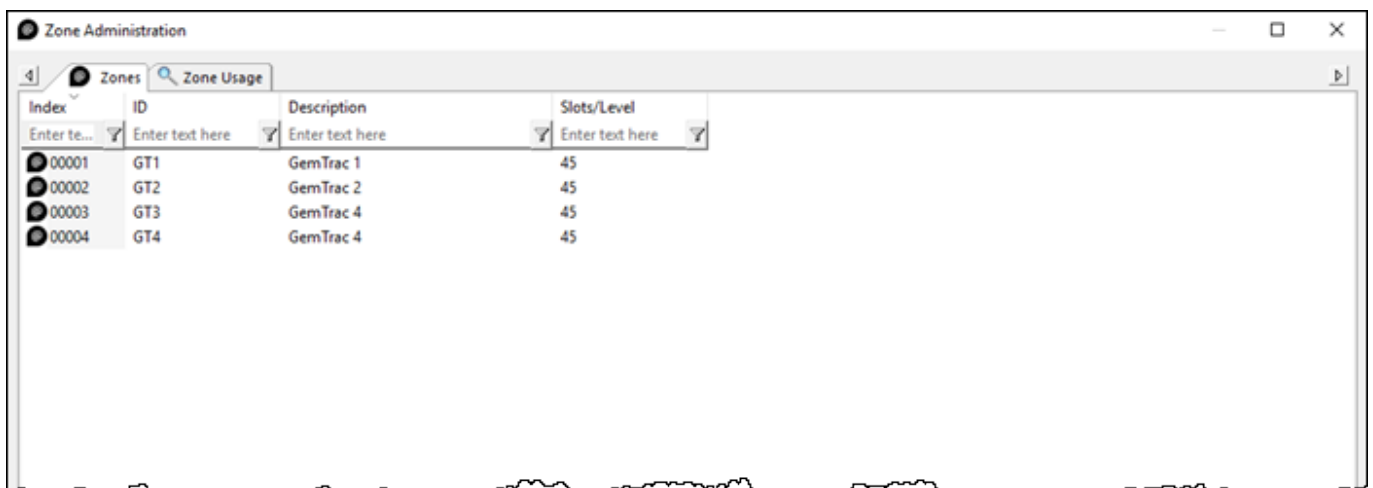
To access the Zone Administration window, from the Main Menu, select Administration → Zone Administration.



Only users with tapemaster rights have access to the Administrative Menu.

Zone Tab

The Zone tab displays current Zones Index, Zone-ID's, Descriptions and number of Slots per level.



Index	ID	Description	Slots/Level
00001	GT1	GemTrac 1	45
00002	GT2	GemTrac 2	45
00003	GT3	GemTrac 4	45
00004	GT4	GemTrac 4	45

Zone Tab Right-Click Options

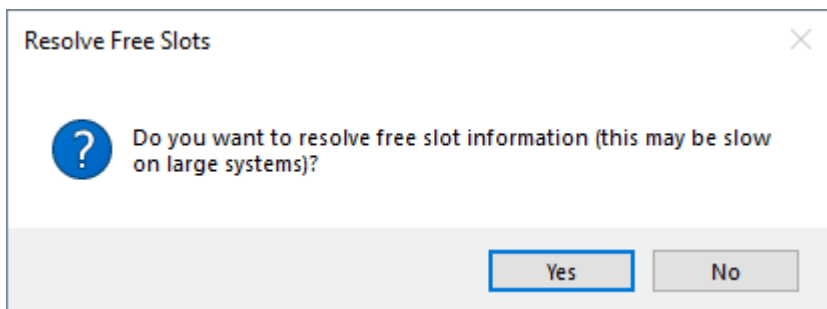
- **Add**: Adds a new Zone.
- **Disable**: Disables the use of the Zone.
- **Edit**
 - **Paste (Using Selected Attributes)**
- **Enable**: Enables the use of the Zone.
- **Properties**: Opens Edit Zone window to edit Zone Properties and view Zone Usage information.

Zone Usage Tab

The Zone Usage tab displays the current Zone Index, Zone-ID's, Descriptions, assigned Customer-IDs, Media-IDs and Repository-IDs, start, end and total Slot numbers, Notes, number of used Slots,

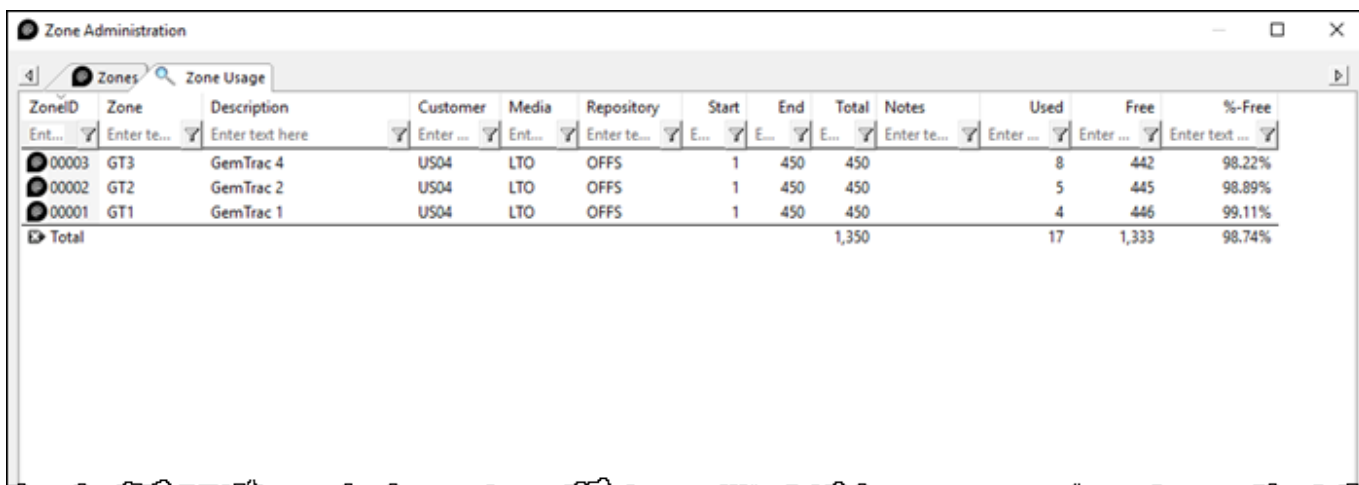
number of free Slots and percentage of free Slots.

To view the Zone usage data, select the Zone Usage tab.



Data in the columns can be displayed in ascending or descending order by clicking the column headings.

Displayed data can be filtered by using the TapeTrack [String Filters](#)

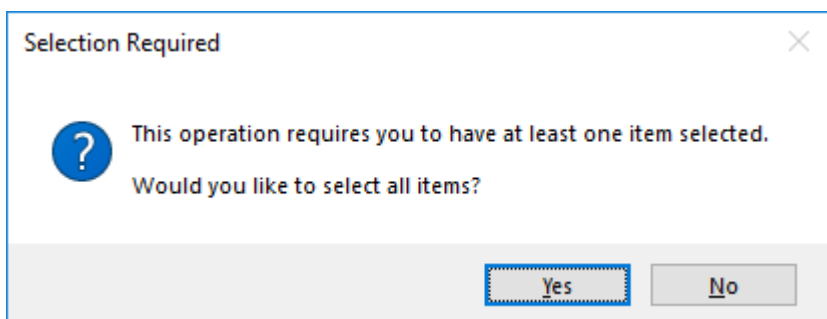


The screenshot shows the "Zone Administration" window with the "Zone Usage" tab selected. It displays a table with columns: ZoneID, Zone, Description, Customer, Media, Repository, Start, End, Total, Notes, Used, Free, and %-Free. The data rows are as follows:

ZoneID	Zone	Description	Customer	Media	Repository	Start	End	Total	Notes	Used	Free	%-Free
00003	GT3	GemTrac 4	US04	LTO	OFFS	1	450	450		8	442	98.22%
00002	GT2	GemTrac 2	US04	LTO	OFFS	1	450	450		5	445	98.89%
00001	GT1	GemTrac 1	US04	LTO	OFFS	1	450	450		4	446	99.11%
Total								1,350		17	1,333	98.74%

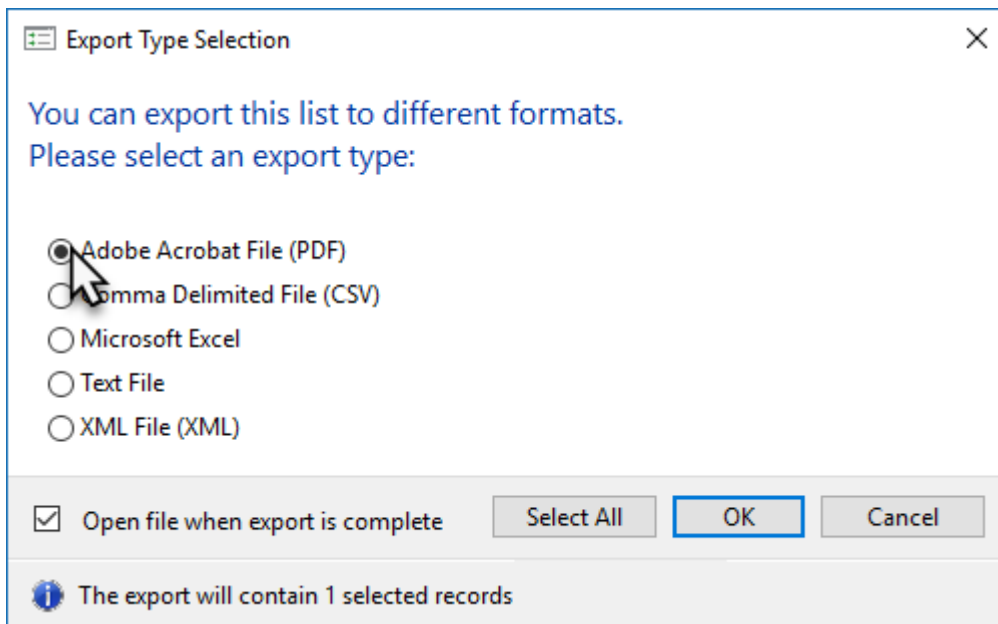
To export to a file, select the required **Zone ID's** from the Zone Usage tab and press **Ctrl+E**.

If no Zones are selected when **Ctrl+E** is pressed, a popup is presented. Click **Yes** to export all records or click **No** to exit export and select required records before pressing **Ctrl+E** to start export process.



Select the output format from:

- Comma Delimited File (CSV)
- Microsoft Excel
- Text File
- XML File



By default the **Open file when export is complete** is checked, uncheck if you do not want the file to open on export.

Click OK to export or Cancel to abort the process.

Click the X in the top right corner to exit.

Example

Data exported to text file

```

System: TapeTrack
Report Description: Export
Production Time: Friday, June 15, 2018 - 11:16:02 (AUS Eastern Standard Time)
Report Width: 90 bytes

ZoneID Zone Description Customer Media Repository Start End Total Notes Used
Free %-Free
-----
00003 GT3 GemTrac 4 US04 LTO OFFS 1 450 450 8
442 98.22
00002 GT2 GemTrac 2 US04 LTO OFFS 1 450 450 5
445 98.89
00001 GT1 GemTrac 1 US04 LTO OFFS 1 450 450 4
446 99.11
Total 1,333 98.74 1,350 17
-----

```

From:
<https://rtfm.tapetrack.com/> - **TapeTrack Documentation**

Permanent link:
https://rtfm.tapetrack.com/master/admin_zone_admin

Last update: **2025/01/21 22:07**

