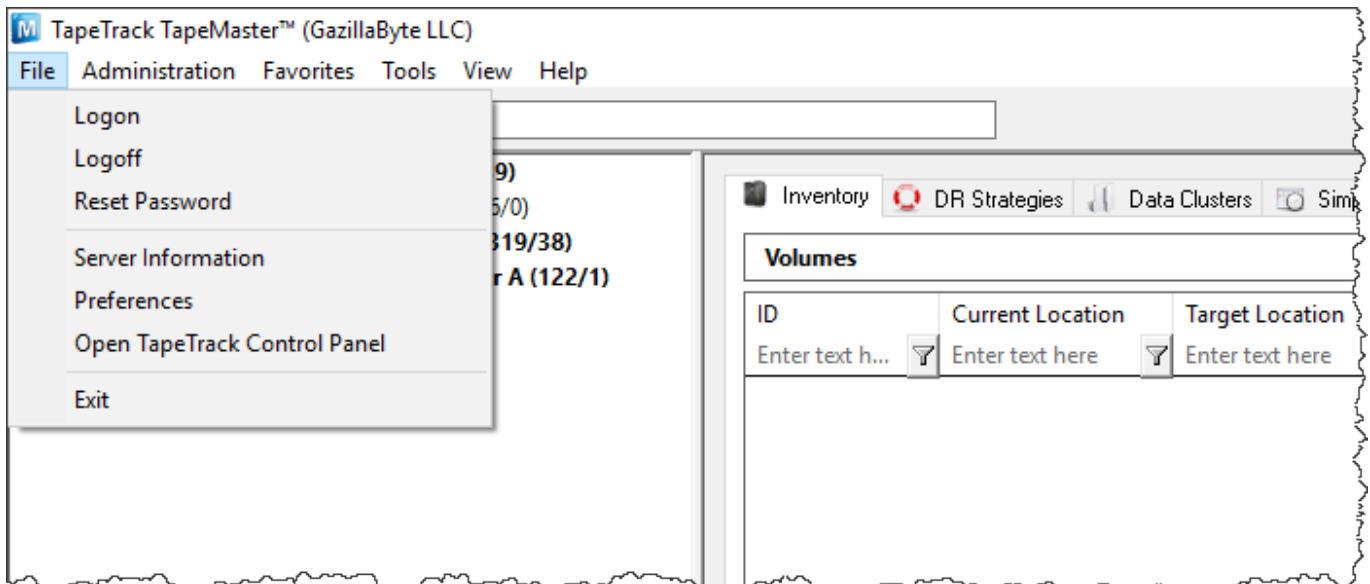


# Advanced Usage

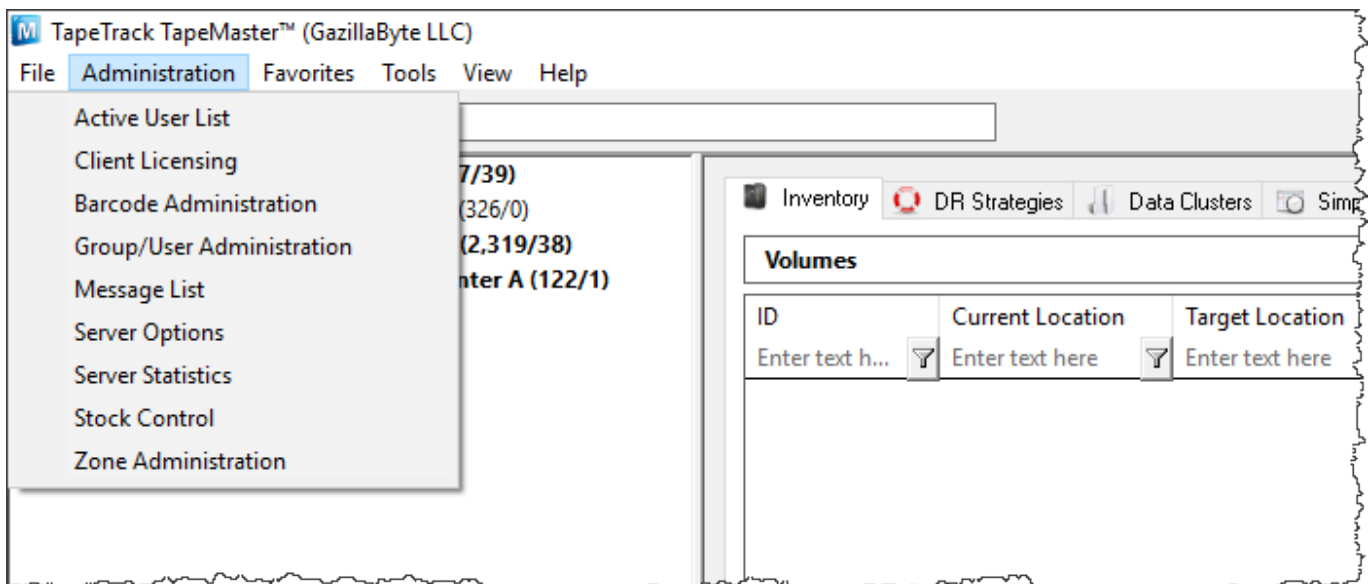
## Menu Functions

### File Functions



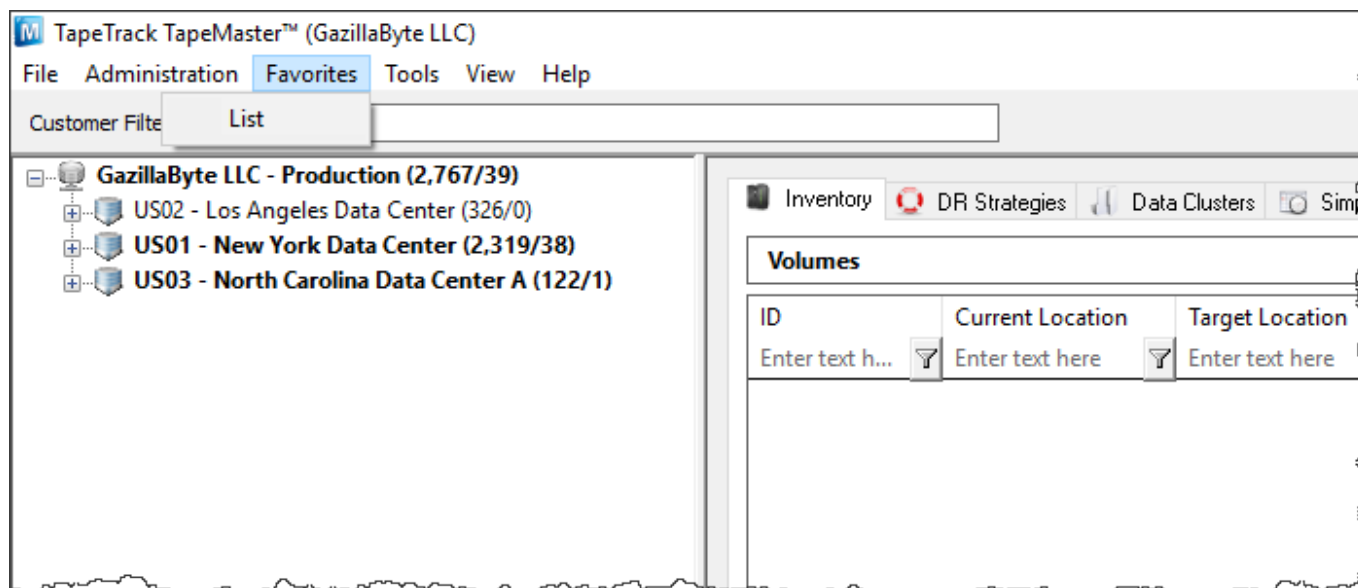
- [Logon](#)
- [Logoff](#)
- [Reset Password](#)
- [Server Information](#)
- [Preferences](#)
- [Open TapeTrack Control Panel](#)

### Administration Functions



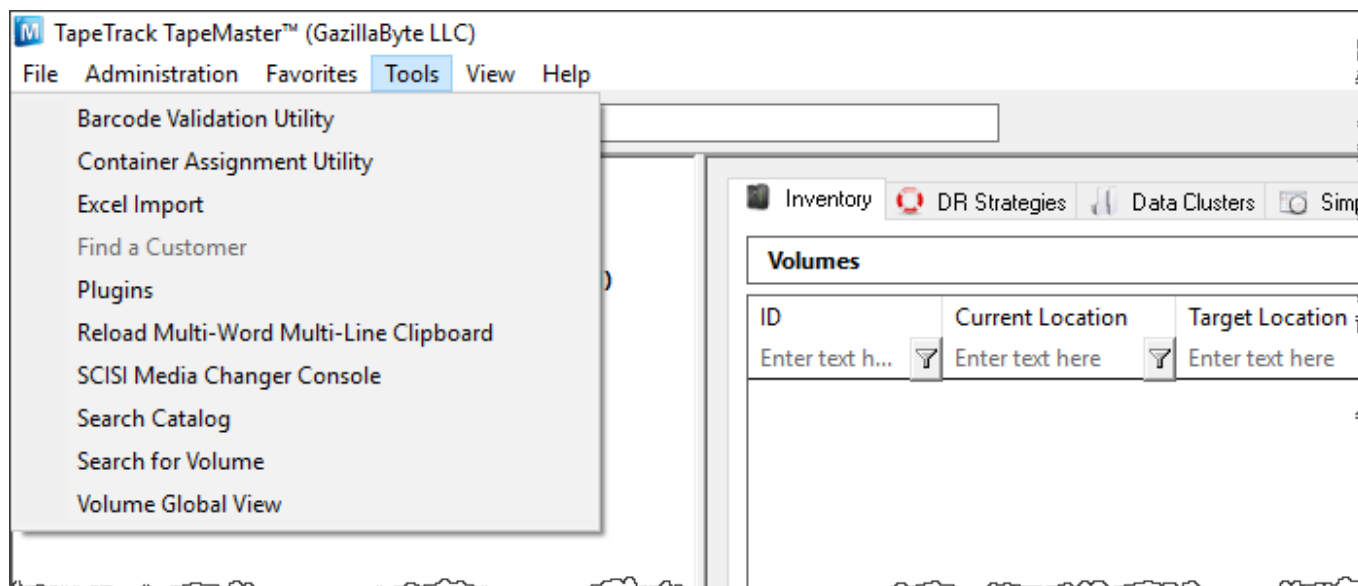
- [Active User List](#)
- [Client Licensing](#)
- [Barcode Administration](#)
- [Group/User Administration](#)
- [Message List](#)
- [Server Options](#)
- [Server Statistics](#)
- [Stock Control](#)
- [Zone Administration](#)

## Favorites



- [List](#)

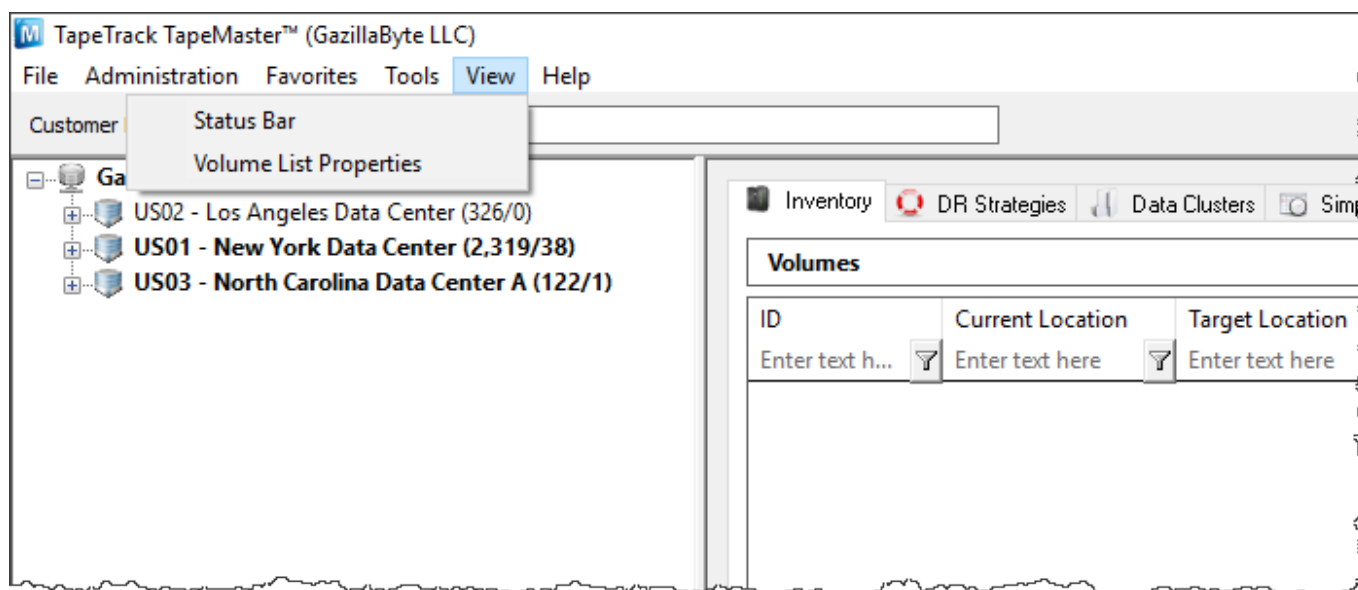
## Tools



- [Barcode Validation Utility](#)

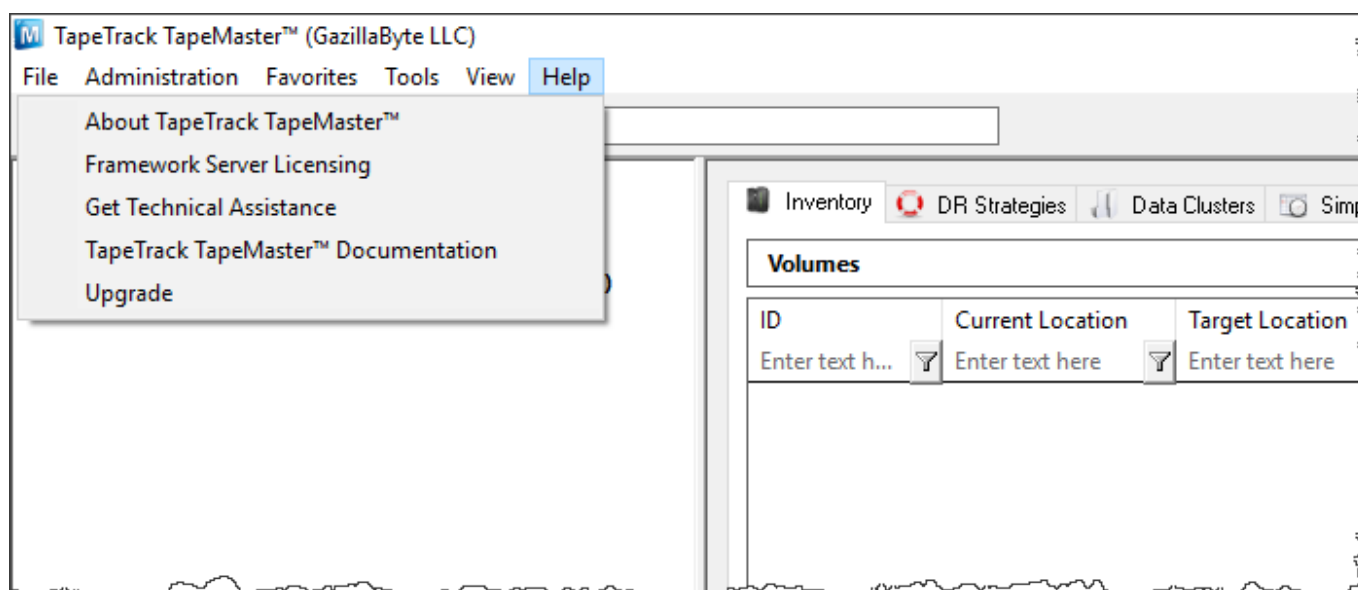
- [Container Assignment Utility](#)
- [Excel Import](#)
- [Find a Customer](#)
- [Plugins](#)
- [Reload Multi-Word Multi-Line Clipboard](#)
- [SCSI Media Changer Console](#)
- [Search Catalog](#)
- [Search for Volume](#)
- [Volume Global View](#)

## View



- [Status Bar](#)
- [Volume List Properties](#)

## Help



- [About TapeTrack TapeMaster](#)
- [Framework Server Licensing](#)
- [Get Technical Assistance](#)
- [TapeTrack TapeMaster Documentation](#)
- [Upgrade](#)

## Repository Functions

- [Assigning Zones](#)
- [Scan to assign slots](#)

From:  
<https://rtfm.tapetrack.com/> - **TapeTrack Documentation**

Permanent link:  
<https://rtfm.tapetrack.com/master/advanced?rev=1504286215>

Last update: **2025/01/21 22:07**

