

Attributes

Attributes are additional variables outside of various Object-IDs and descriptions that can be set for a specific [Volume](#). Attributes can be searched by using the Search Attributes function in the right-click menu of a [Customer Node](#) in the [Customer Tree](#).

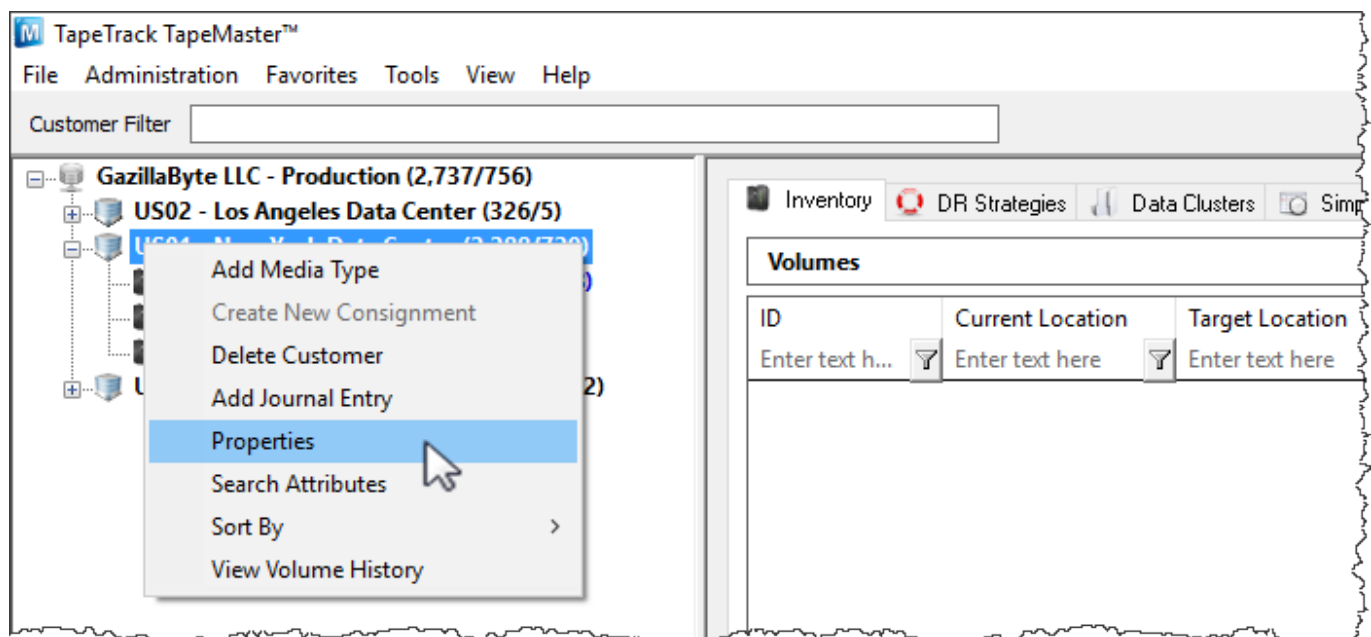
Adding and Maintaining Attributes

Attributes are divided into three main pieces: Attribute, Type, and Value.

- **Attribute:** An Attribute is an item that can have many variables assigned to it, similar to a category.
- **Type:** There are three types of acceptable Attribute: Dates, Integers, and Strings.
- **Value:** The Values are the unique variables that are assigned to each Attribute on a [Volume](#) level.

Setting Attributes and Types

Attributes and types are set at a Customer level by right-clicking a Customer in the Customer Tree and selecting "Properties".



This will launch the Customer Properties Window. Select the Attributes tab.



Left-click in the Attribute field next to an Index number to enter an Attribute.

By default, the type will be set to String. Click String to select either String, Integer, or Date from the Type Drop Down Menu.

Set **Required** to the required value when creating new volumes:

- False equates to optional value.
- True equates to mandatory entry.

Setting Attribute Values

Attribute Values are set at a [Volume](#) Level in the Attributes Tab of the [Volume Properties Window](#). To launch the [Volume Properties Window](#) for a specific [Volume](#), double-click a Volume in the [Volume List](#) or right-click a [Volume](#) in the [Volume List](#) and select **Properties**.



Left-click in the Value field across from the desired Attribute to set a value for that Attribute.

Attribute History

Changes to attributes are kept in a historical log. To access the historical values of an attribute for a particular volume double click the selected volume or right click and select properties. Open the attributes tab and select the dropdown box Available Attribute History and click on the required attribute category.

Identity	Target Location	Current Location	Scanned Location	Notes	History	
Datasets	Attributes	VeriScore™	DR Strategies	Options	Catalog	References
Description						
Long Barcode	A6000001L6					
Catalog	2017 Main -1A					
Date	Tuesday, July 29, 2025					
Duplicate	140102L6					

View Attribute History ▾ Catalog (2 history records)

Save Cancel Help

This will open the **Attribute History**, displaying the previous values the attribute has been set to, the date it was changed and the user who updated it.

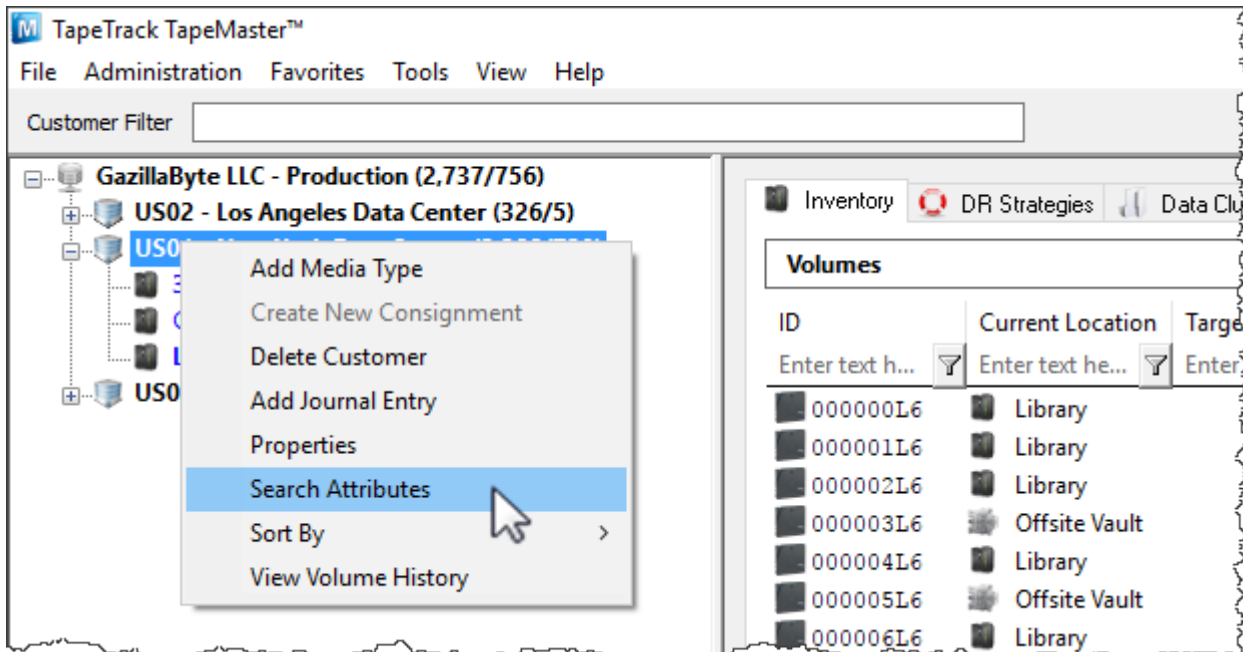
Date Changed	User-ID	Old Value	Deleted
2025-07-29 09:41:21	tapemaster	2017 Main	No
2025-07-29 09:41:34	tapemaster	2017 Main -1	No
	tapemaster	2017 Main -1A	Current Value

Total Items 3

OK

Searching Attributes

The Search Attributes function can be launched by right-clicking a [Customer](#) in the [Customer Tree](#) and selecting **Search Attributes**.



This will launch the Attribute Search window. The Attribute Search window is divided into two windows: the filter window and the Item List.

The filters window displays the Attributes set at a **Customer** level. Left-click next to an Attribute and type in an Attribute Value to search for all Volumes that have that Attribute Value set.

Right-clicking in the Item List window will provide options to print a list of the **Volumes** with the selected Attribute Value set.

Attribute Search

Description
Long Barcode A6*
Catalog
Date
Duplicate

Search

Customer-ID	Media-ID	Volume-ID	Values
US01	LTO	00000 1L6	Long Barcode(A600000 1L6)
US0			Barcode(A6132038L6)

- Reset
- Copy Column >
- Count Unique Values >
- Export Ctrl+E
- Filters >
- Print Ctrl+P**
- Select >
- View >
- Grab Screenshot Ctrl+X

Total Items 2 Total Selected 2 First Selection 1

From: <https://rtfm.tapetrack.com/> - **TapeTrack Documentation**

Permanent link: <https://rtfm.tapetrack.com/master/attributes?rev=1508110150>

Last update: **2025/01/21 22:07**

