

Built In Repositories

TapeMaster has 3 built in repositories, which are hidden by default.

To display the hidden repositories, navigate to the Options Tab in the Media Type Properties Window and set Show Built In Repositories to **true**. The repositories **Initial**, **Next** and **Home** will be displayed in the repository window.



Built-In Repositories often do not exist as locations, but they use settings in the Options Tab of the Volume Properties Window to dictate movements.

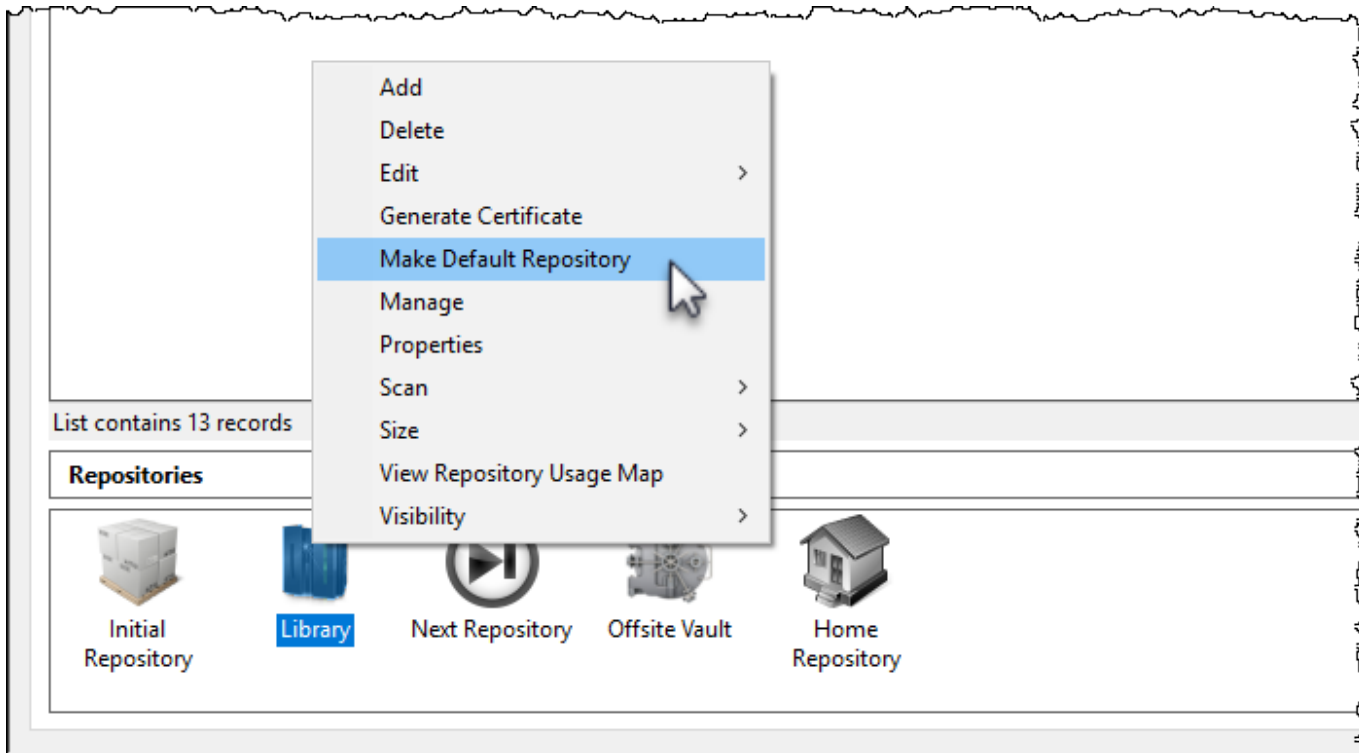
Built In Repository Functions

Initial Repository

If no repository is set in the Default Repository field in the Media Type Properties Window's Options Tab, newly added Volumes will be allocated to the Initial Repository.



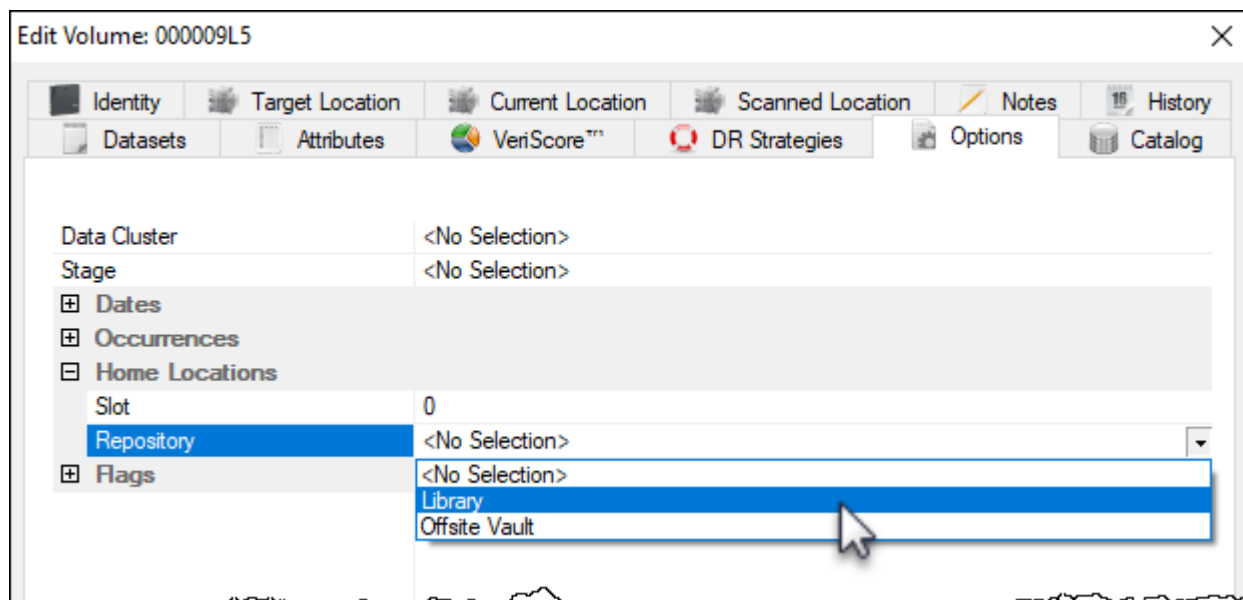
Any other repository may be set as the default location for new volumes by right clicking the required repository and selecting Make Default Repository



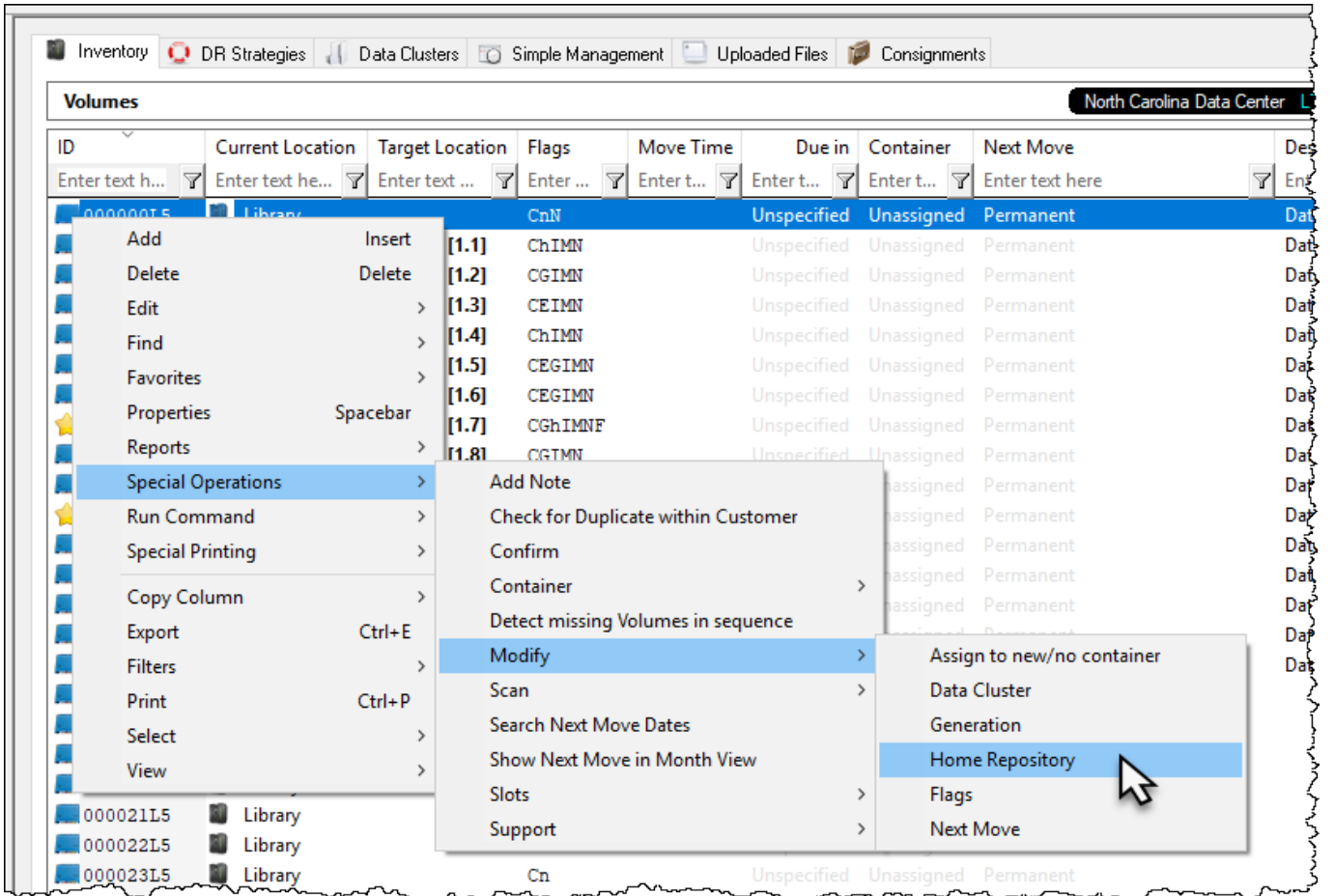
Home Repository

Drag and dropping [volumes](#) to the Home Repository will move them to the repository set as the Home Repository in the [Volume Properties Window Options](#) tab.

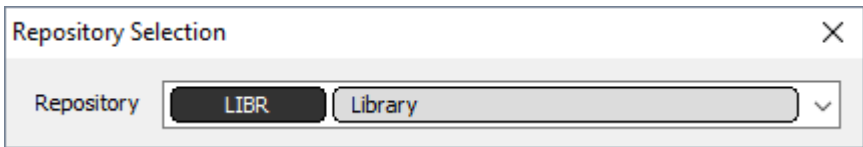
A [volume's Home Repository](#) can be set in the Volume Properties Window Options Tab.



or by right-clicking Volumes in the Volume List, then selecting Special Operations, Modify, and Home Repository.



Select repository from popup window dropdown box.



Next Repository

Dragging Volumes to the Next Repository will move them to the repository set as the Next Repository in the Options Tab of the Repository Properties Window of the Volume's current location.

From: <https://rtfm.tapetrack.com/> - **TapeTrack Documentation**

Permanent link: https://rtfm.tapetrack.com/master/built_in_repositories?rev=1516339519

Last update: **2025/01/21 22:07**

