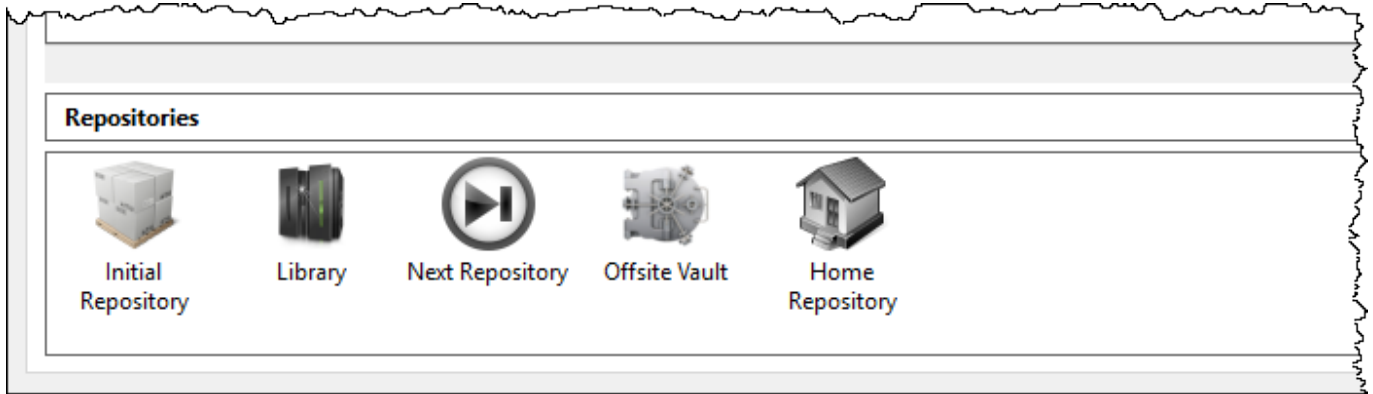


# Built In Repositories

TapeMaster has 3 built in repositories, which are hidden by default.

To display the hidden repositories, navigate to the Options Tab in the Media Type Properties Window and set Show Built In Repositories to **true**. The repositories **Initial**, **Next** and **Home** will be displayed in the repository window.

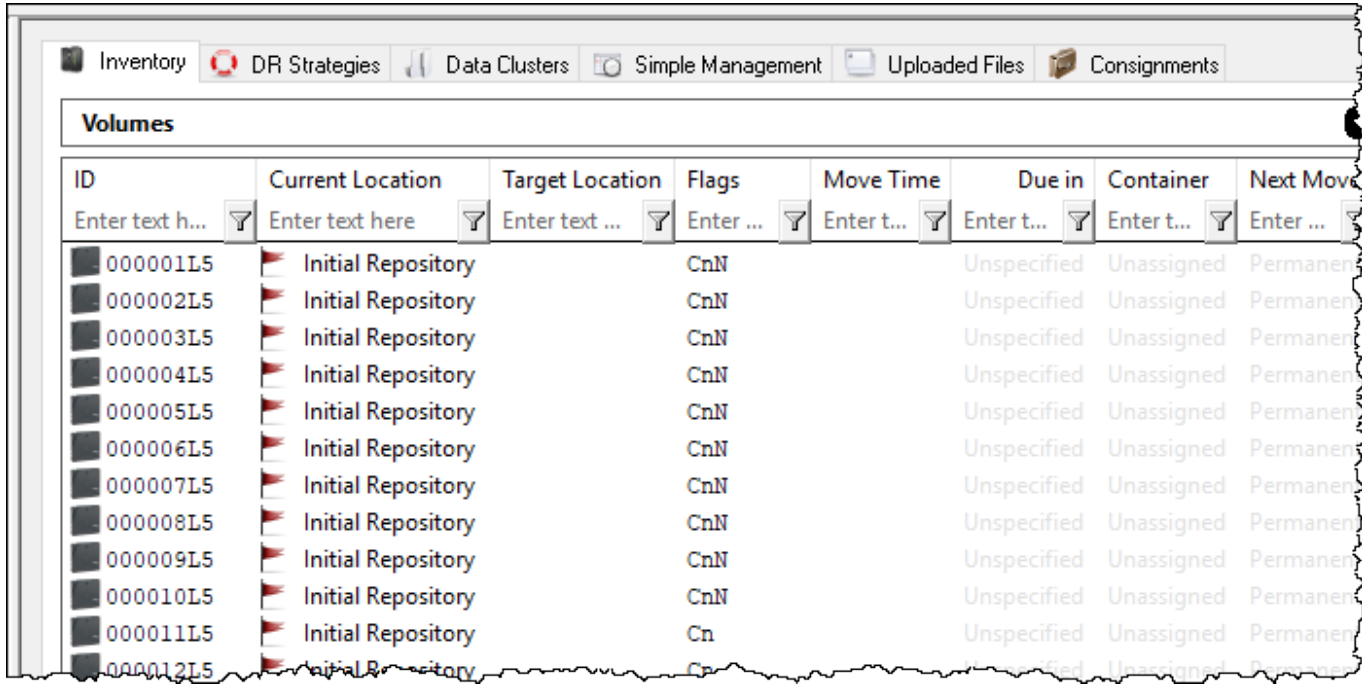
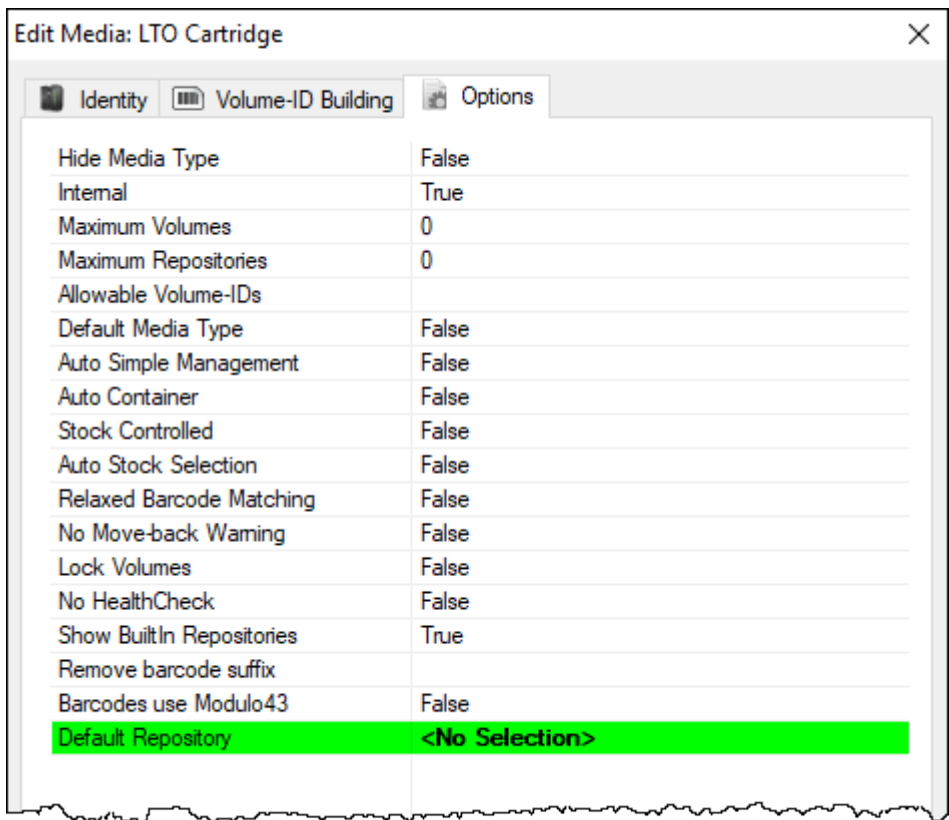


Built-In Repositories often do not exist as locations, but they use settings in the Options Tab of the Volume Properties Window to dictate movements.

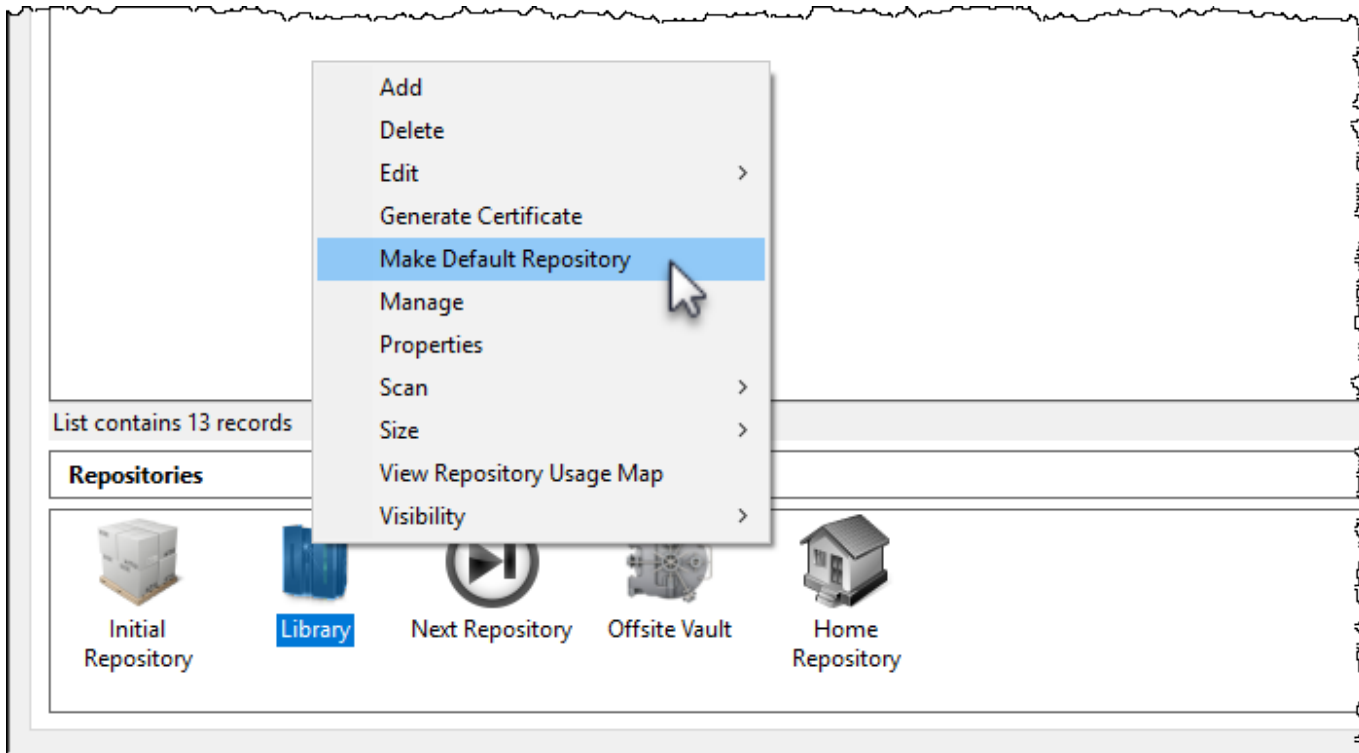
## Built In Repository Functions

### Initial Repository

If no repository is set in the Default Repository field in the Media Type Properties Window's Options Tab, newly added Volumes will be allocated to the Initial Repository.



Any other repository may be set as the default location for new volumes by right clicking the required repository and selecting Make Default Repository

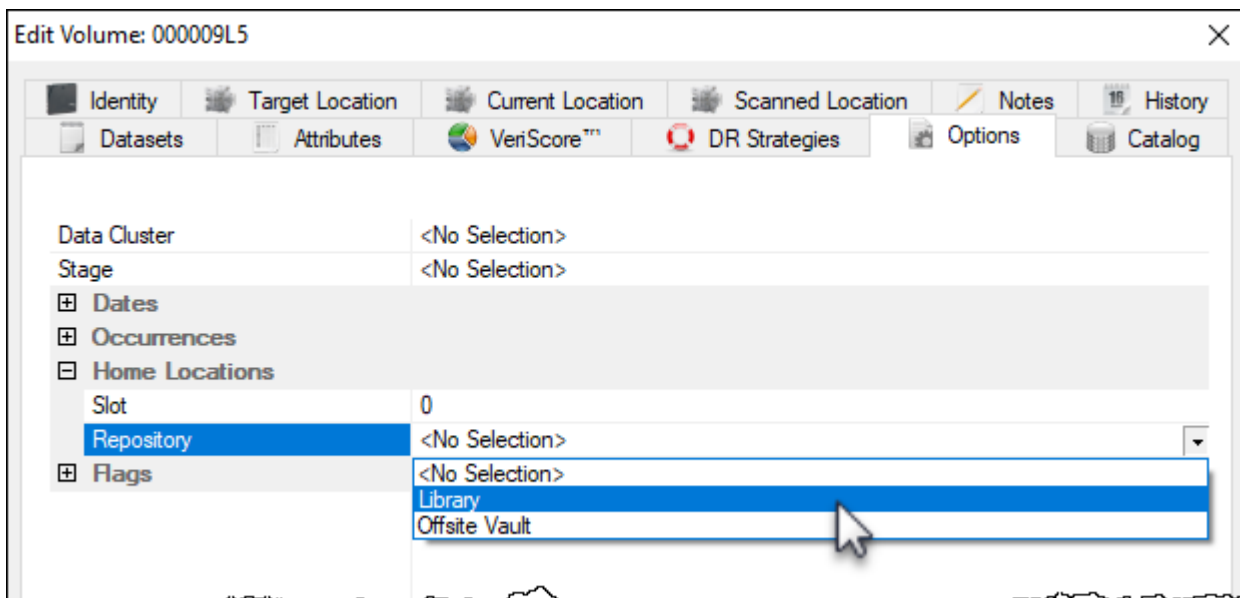


## Home Repository

Dragging and dropping [volumes](#) to the Home Repository places them into a move status to the [repository](#) set as the Home Repository in the [Volume Properties Window Options](#) tab.

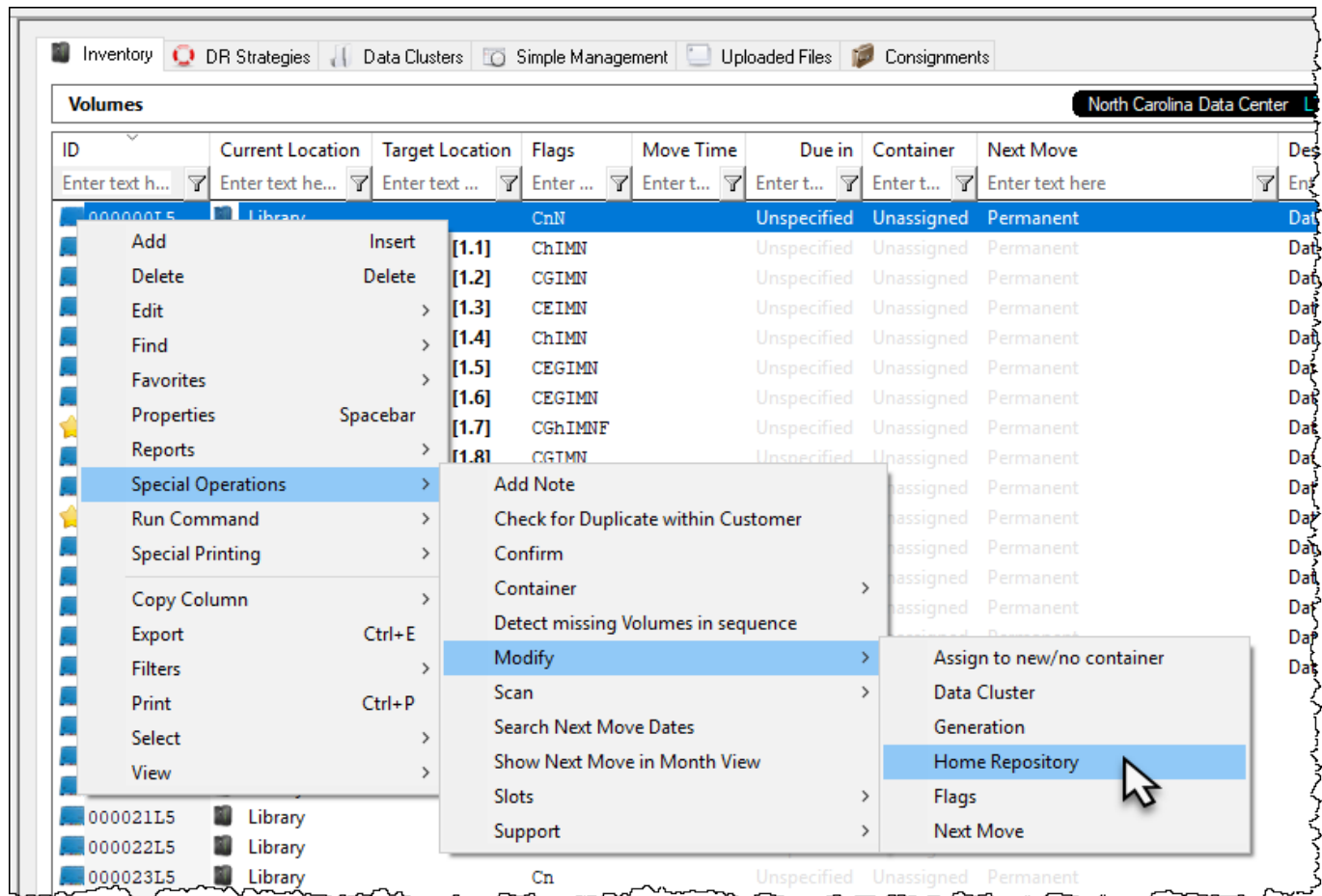
An example for using this function would be [volumes](#) returning from offsite storage back onsite and needing to be stored in different racks ([repositories](#)). Having the required rack set for each [volume](#) allows you to drag and drop all the [volumes](#) on the home repository and letting TapeTrack sort which [repository](#) each of the [volumes](#) belong in, saving you having to separate each group of [volumes](#) for each [repository](#) manually.

A [volume's Home Repository](#) can be set in the Volume Properties Window Options Tab.

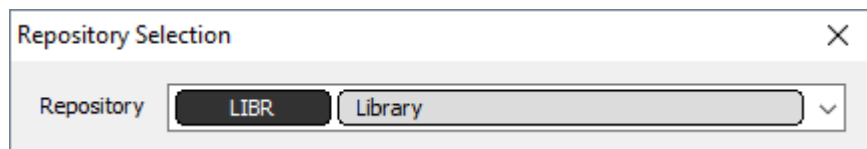


or by right-clicking [Volumes](#) in the Volume List, then selecting [Special Operations](#), [Modify](#), and [Home](#)

Repository. Selecting a range of **volumes** allows you to assign multiple **volumes** home repository in the one operation.



Select repository from popup window dropdown box.



## Next Repository

Drag and dropping **volumes** to the next Repository places them into a move status to the **repository** set as the Next Repository in the **Volume Properties Window Options** tab.

Dragging Volumes to the Next Repository will move them to the repository set as the Next Repository in the Options Tab of the Repository Properties Window of the Volume's current location.

From: <https://rtfm.tapetrack.com/> - **TapeTrack Documentation**

Permanent link: [https://rtfm.tapetrack.com/master/built\\_in\\_repositories?rev=1516344256](https://rtfm.tapetrack.com/master/built_in_repositories?rev=1516344256)

Last update: **2025/01/21 22:07**



