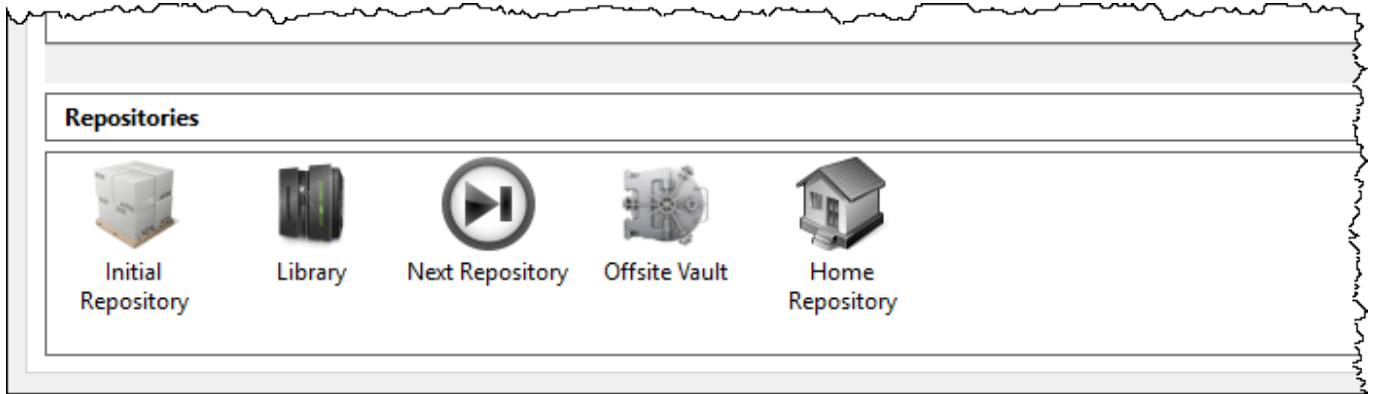


Built In Repositories

TapeMaster has 3 built in [Repositories](#), which are hidden by default.

To display the hidden [Repositories](#), navigate to the Options Tab in the Media Type Properties Window and set Show Built In Repositories to **true**. The [Repositories](#) **Initial**, **Next** and **Home** will be displayed in the repository window.

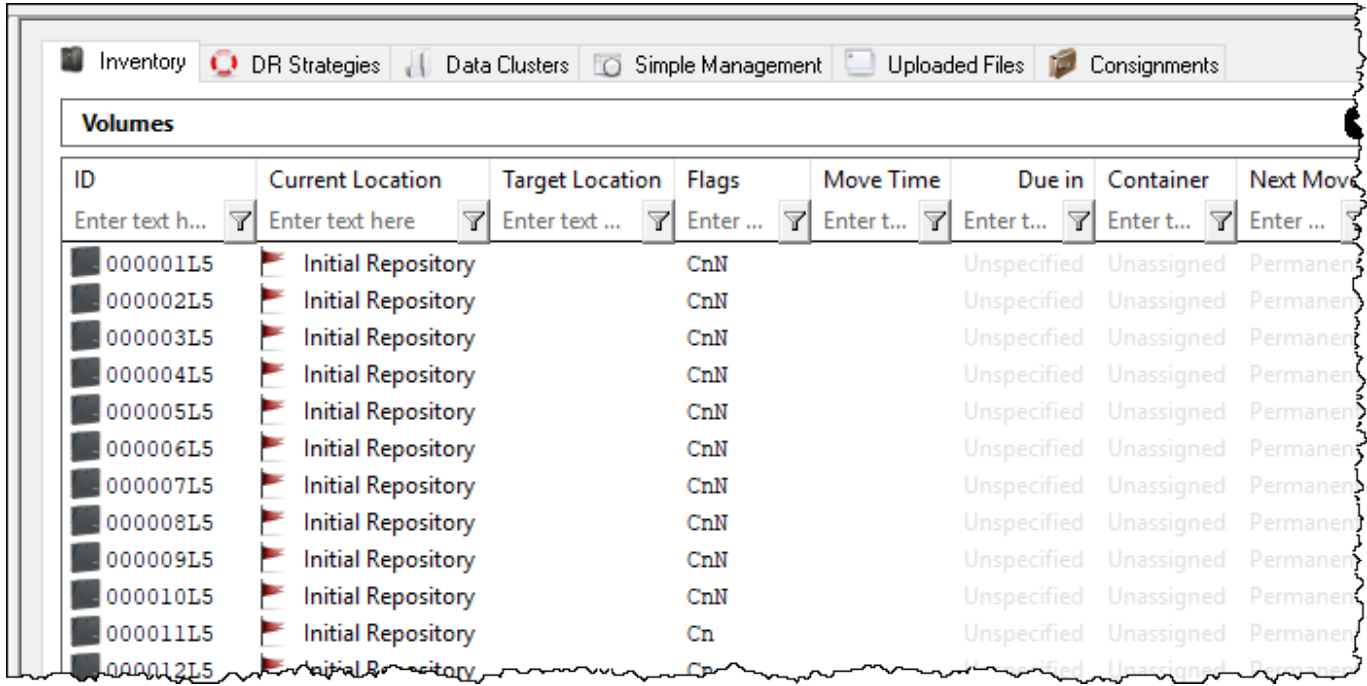
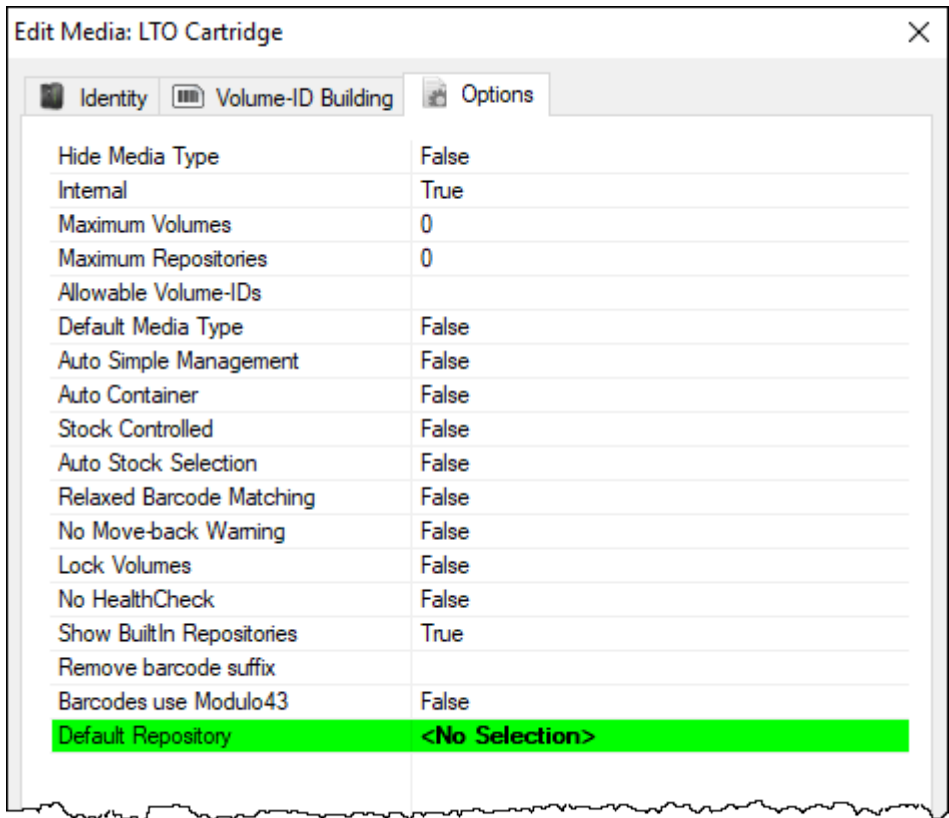


Built-In [Repositories](#) often do not exist as locations, but they use settings in the Options Tab of the Volume Properties Window to dictate movements.

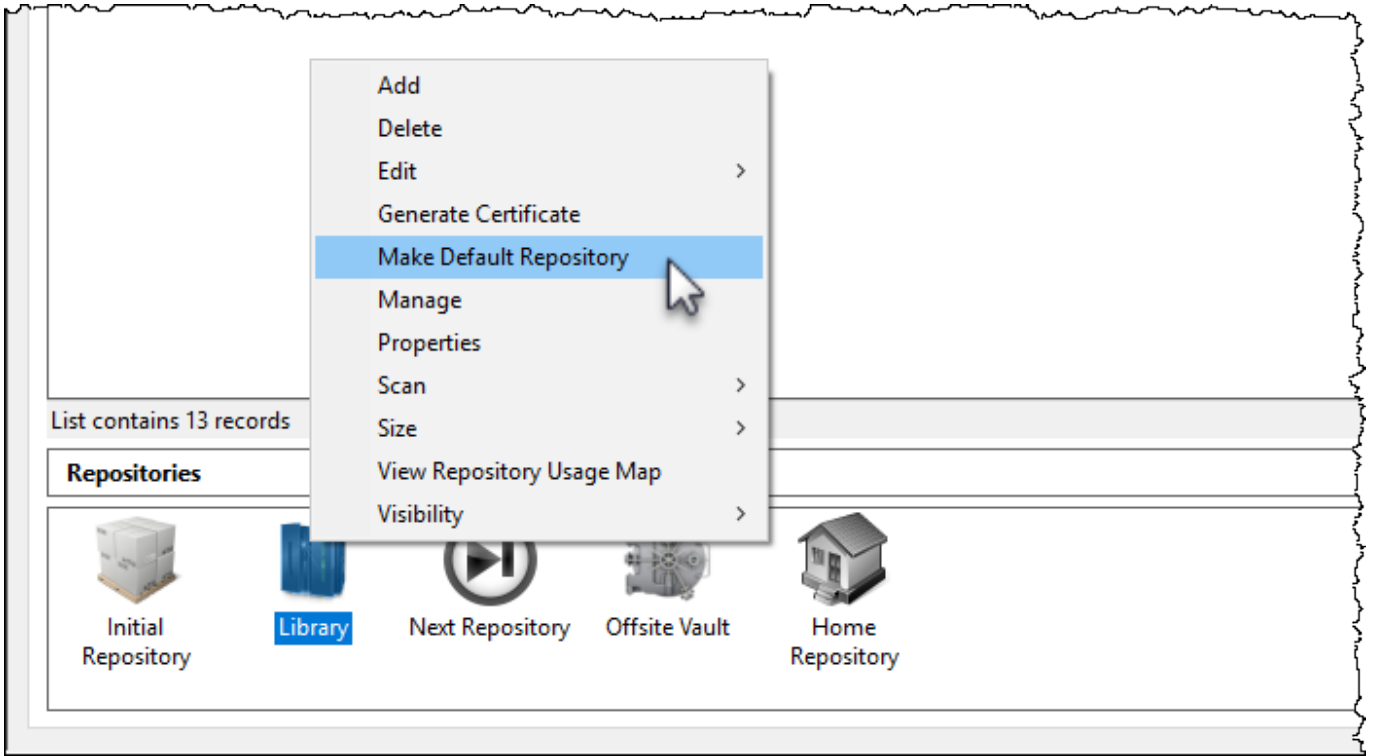
Built In Repository Functions

Initial Repository

If no [Repositories](#) is set in the Default Repository field in the Media Type Properties Window's Options Tab, newly added Volumes will be allocated to the Initial [Repositories](#).



Any other [Repositories](#) may be set as the default location for new volumes by right clicking the required repository and selecting Make Default Repository

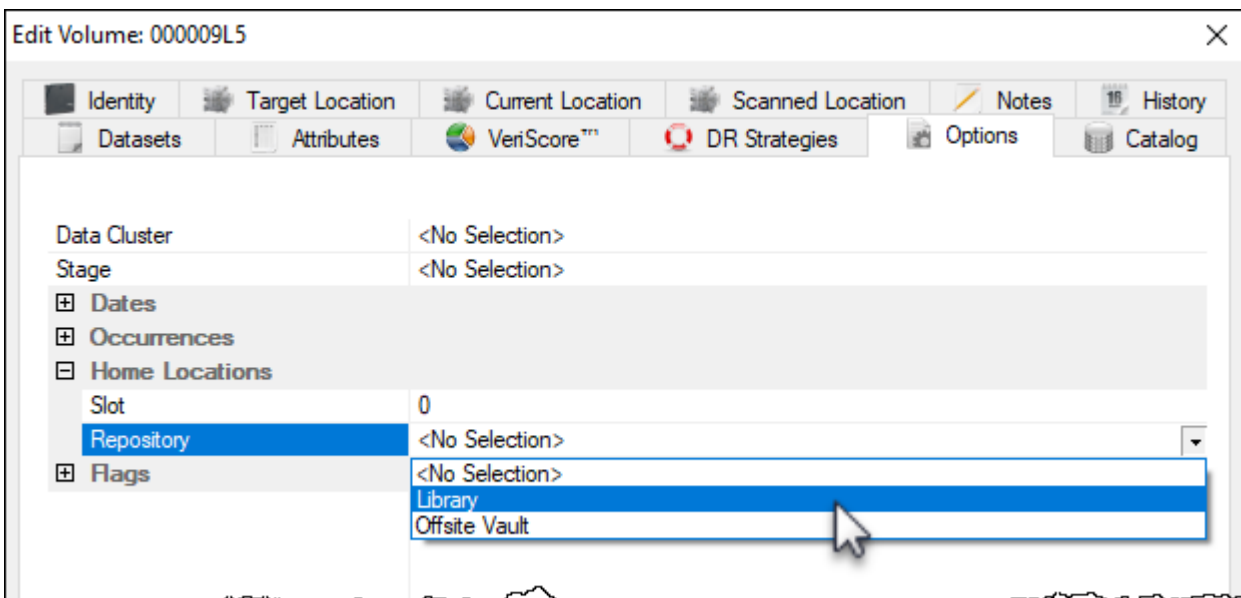


Home Repository

Dragging and dropping [volumes](#) to the Home [Repository](#) places them into a move status to the [Repository](#) set as the Home Repository in the [Volume Properties Window Options](#) tab.

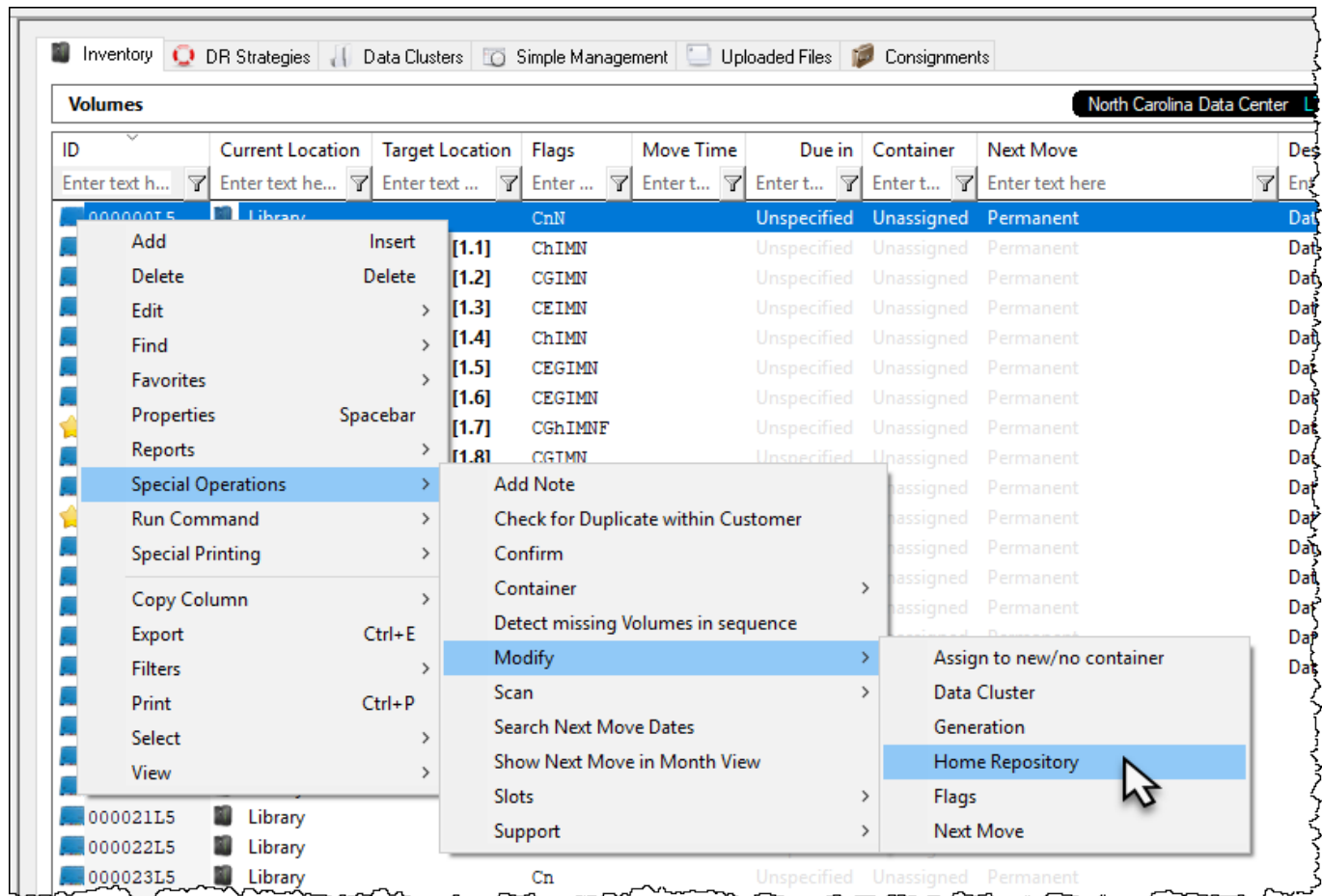
An example for using this function would be [volumes](#) returning from offsite storage back on-site and needing to be stored in different racks ([repositories](#)). Having the required rack set for each [volume](#) allows you to drag and drop all the [volumes](#) on the home [Repository](#) and letting TapeTrack sort which [repository](#) each of the [volumes](#) belong in, saving you having to separate each group of [volumes](#) for each [repository](#) manually.

A [volume's Home Repository](#) can be set in the Volume Properties Window Options Tab.

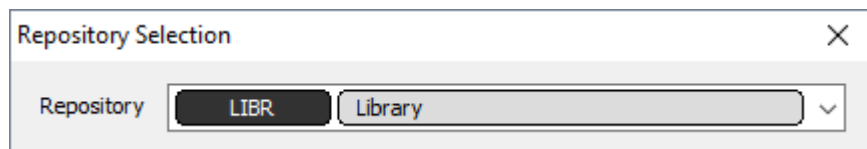


or by right-clicking [Volumes](#) in the Volume List, then selecting [Special Operations](#), Modify, and Home

Repository. Selecting a range of **Volumes** allows you to assign multiple **volumes** home **Repository** in the one operation.



Select **Repository** from popup window drop-down box.



Next Repository

Drag and dropping **volumes** to the next **Repository** places them into a move status to the **repository** set as the Next **Repository** in the **Volume Properties Window Options** tab.

From: <https://rtfm.tapetrack.com/> - **TapeTrack Documentation**

Permanent link: https://rtfm.tapetrack.com/master/built_in_repositories?rev=1553483329

Last update: **2025/01/21 22:07**

