

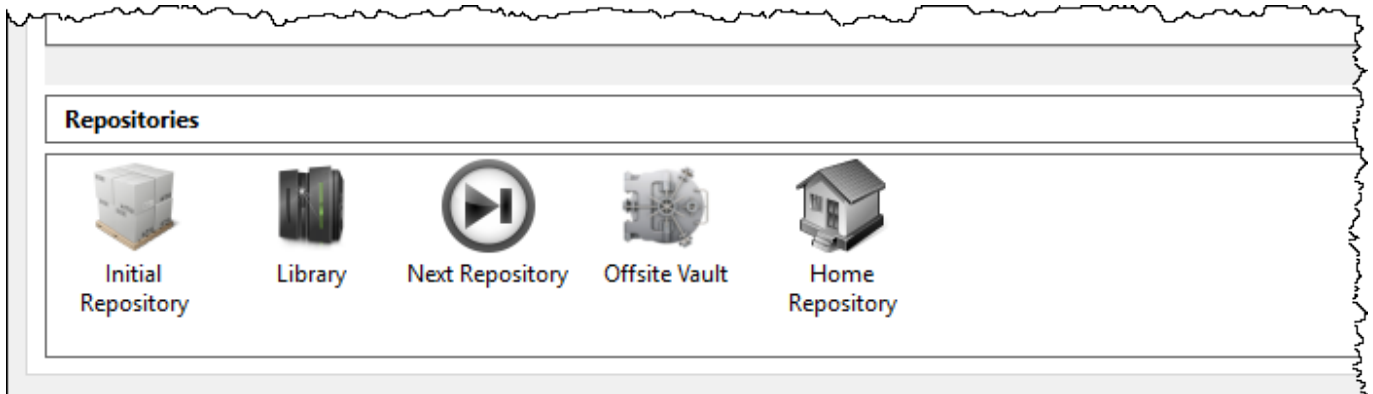
# Built In Repositories

TapeMaster has 3 built in [Repositories](#), which are hidden by default.

Right-click on the required [Media](#) type and select Properties.

Select the Options tab in the [Media](#) Type Properties window and set Show Built In Repositories to true.

The [Repositories](#) **Initial**, **Next** and **Home** will be displayed in the [Repository](#) window.

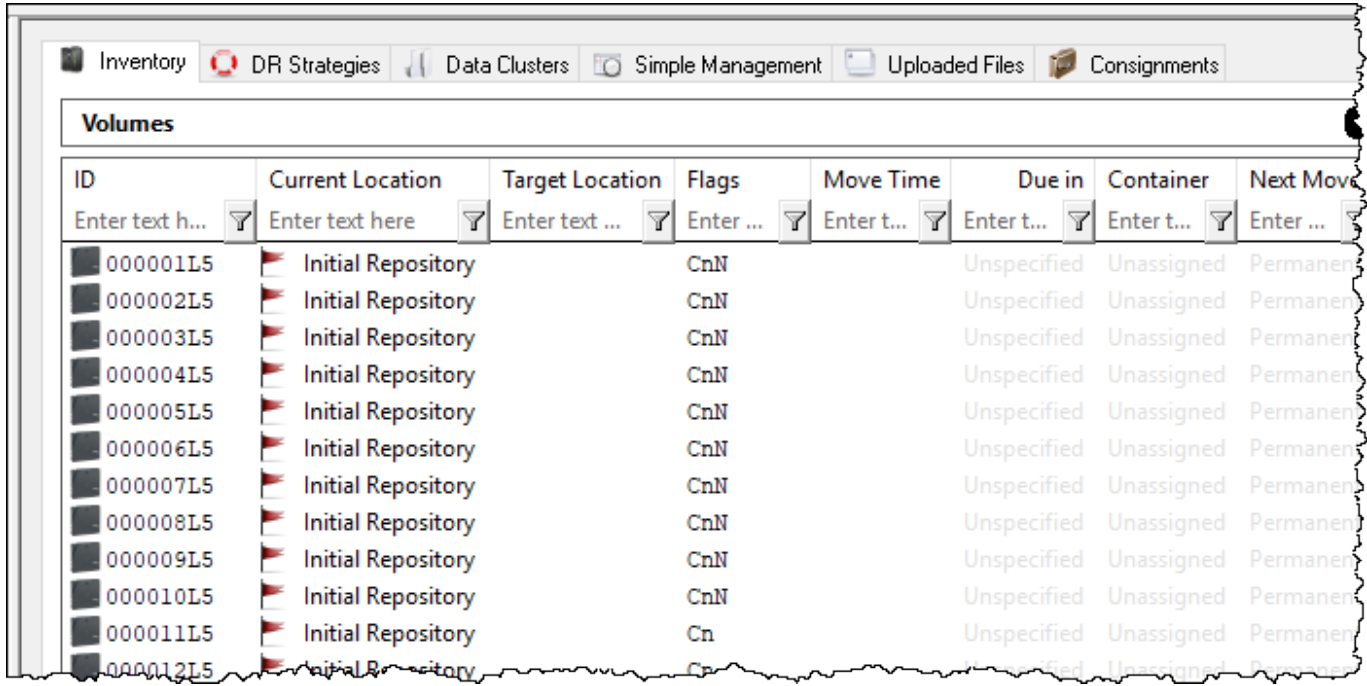
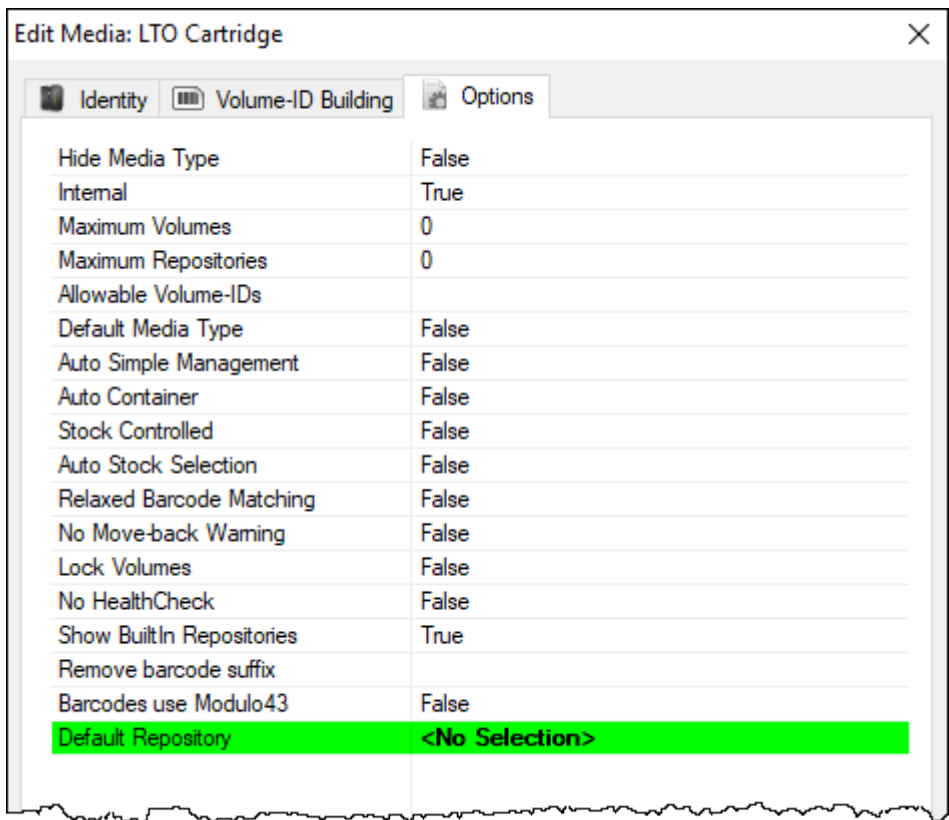


The Built-In [Repositories](#) often do not exist as locations, but are used as settings in the Options Tab of the Volume Properties Window to dictate movements.

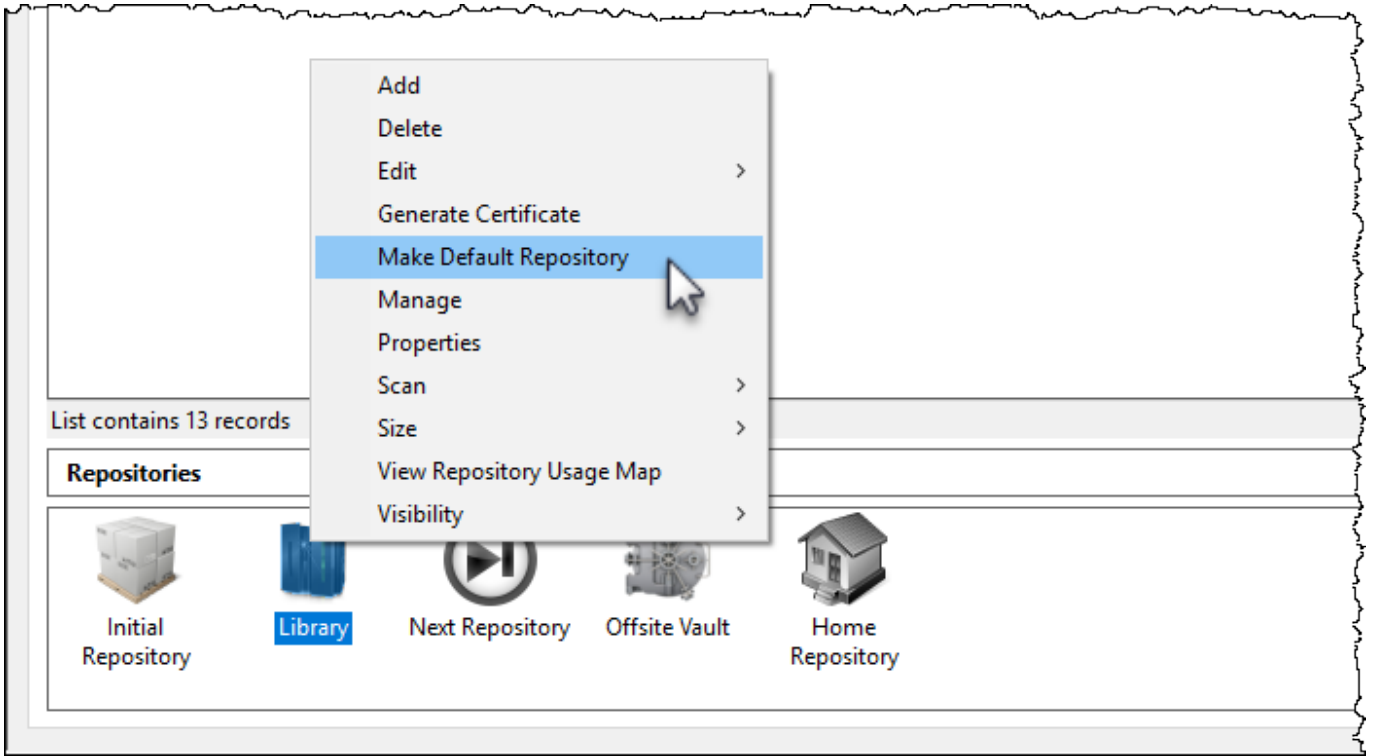
## Built In Repository Functions

### Initial Repository

If No Selection is set in the Default Repository field in the Media Type Properties Window's Options Tab, newly added [Volumes](#) will be allocated to the Initial [Repositories](#).



Any other [Repositories](#) may be set as the default location for new [Volumes](#) by right-clicking the required [Repository](#) and selecting **Make Default Repository**

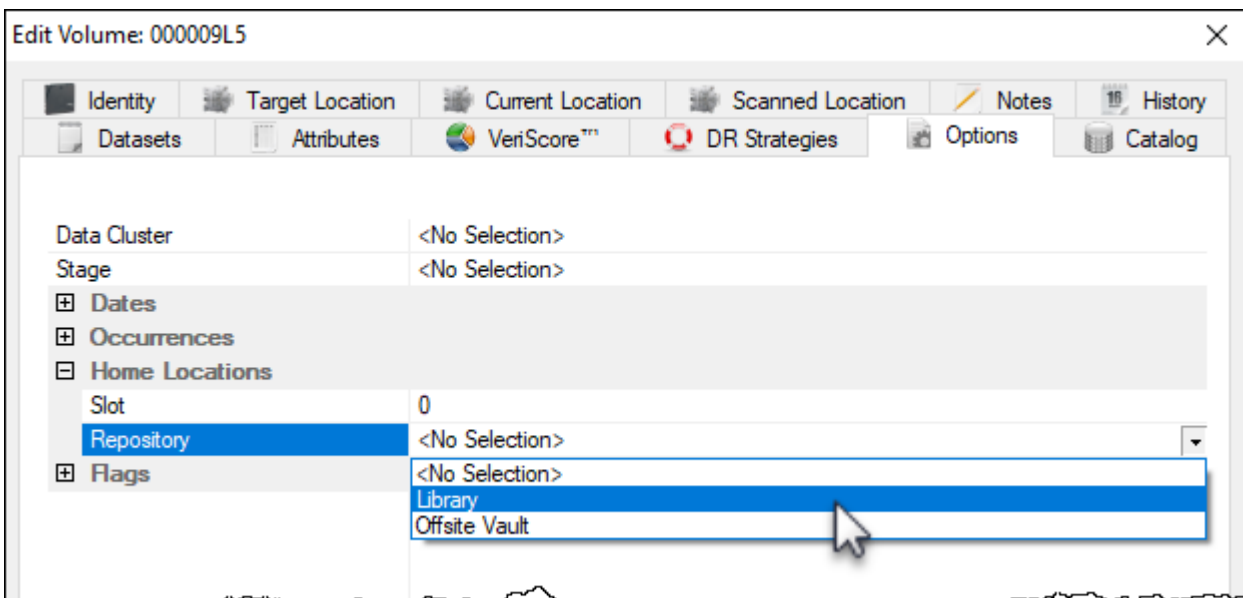


## Home Repository

Dragging and dropping [Volumes](#) to the Home [Repository](#) places them into a move status to the [Repository](#) set as the Home Repository in the [Volume Properties Window Options](#) tab.

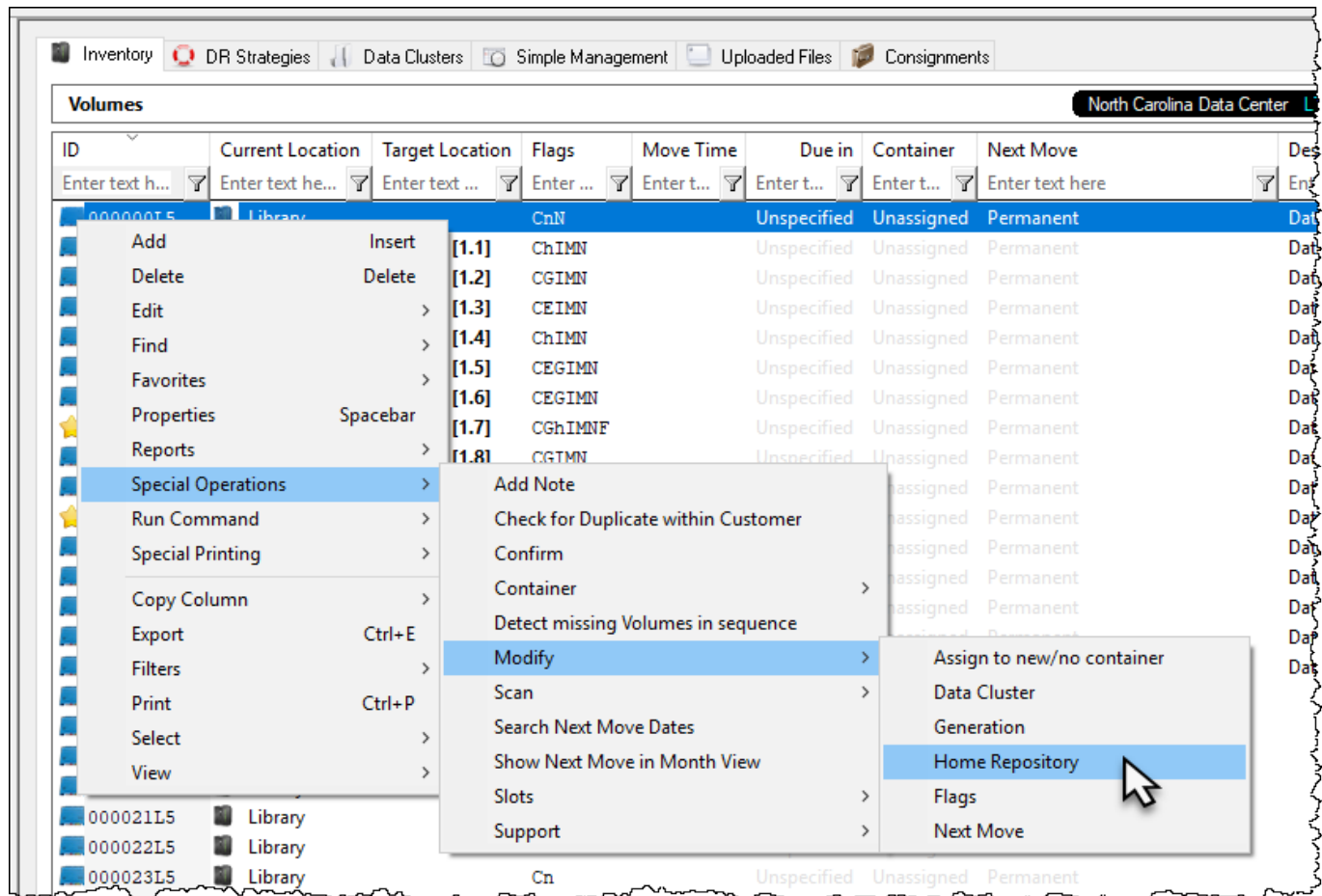
An example for using this function would be [Volume](#) returning from offsite storage back on-site and needing to be stored in different racks ([repositories](#)). Having the required rack set for each [Volume](#) allows you to drag and drop all the [Volume](#) on the Home [Repository](#) and letting TapeTrack sort which [repository](#) each of the [Volume](#) belong in, saving you having to separate each group of [Volumes](#) for each [repository](#) manually.

A [Volume's Home Repository](#) can be set in the Volume Properties Window Options Tab.

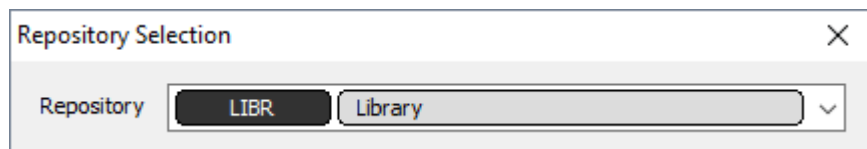


or by right-clicking [Volumes](#) in the Volume List, then selecting [Special Operations](#), Modify, and Home

**Repository.** Selecting a range of **Volumes** allows you to assign multiple **Volumes** Home **Repository** in the one operation.



Select **Repository** from popup window drop-down box.



## Next Repository

Drag and dropping **Volumes** to the next **Repository** places them into a move status to the **Repository** set as the Next **Repository** in the **Volume** Properties Window Options tab.

From: <https://rtfm.tapetrack.com/> - **TapeTrack Documentation**

Permanent link: [https://rtfm.tapetrack.com/master/built\\_in\\_repositories?rev=1571267528](https://rtfm.tapetrack.com/master/built_in_repositories?rev=1571267528)

Last update: **2025/01/21 22:07**

