

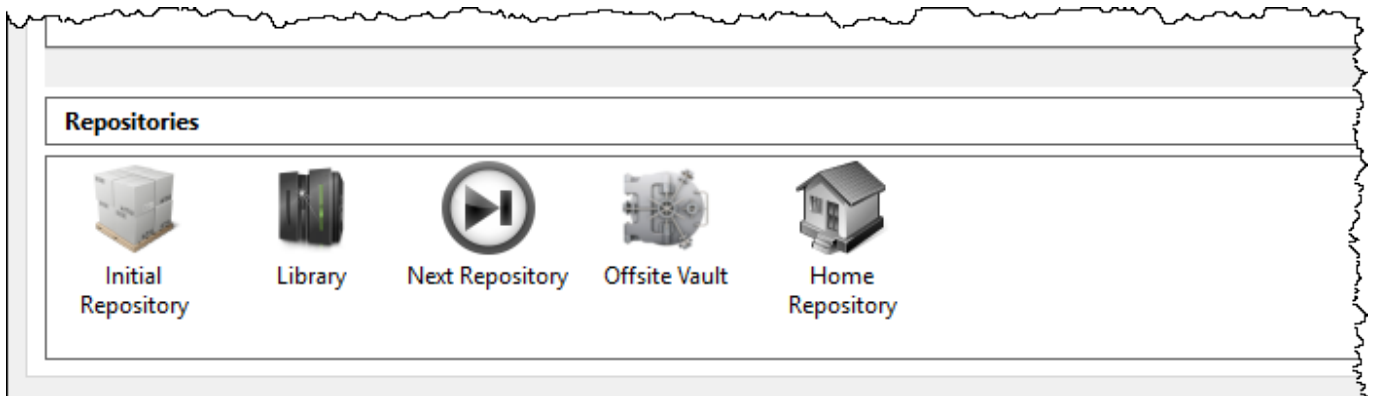
Built In Repositories

TapeMaster has 3 built in [Repositories](#), which are hidden by default.

Right-click on the required [Media](#) type and select Properties.

Select the Options tab in the [Media](#) Type Properties window and set Show Built In Repositories to true.

The [Repositories](#) **Initial**, **Next** and **Home** will be displayed in the [Repository](#) window.

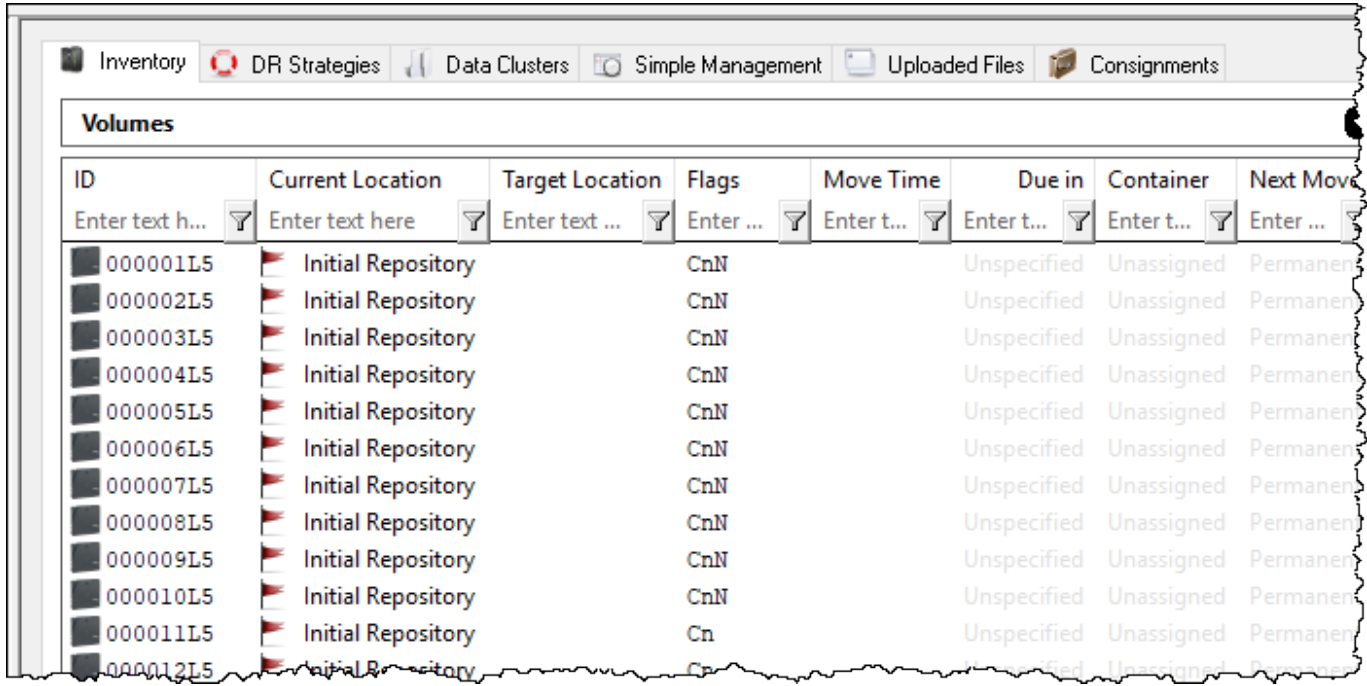
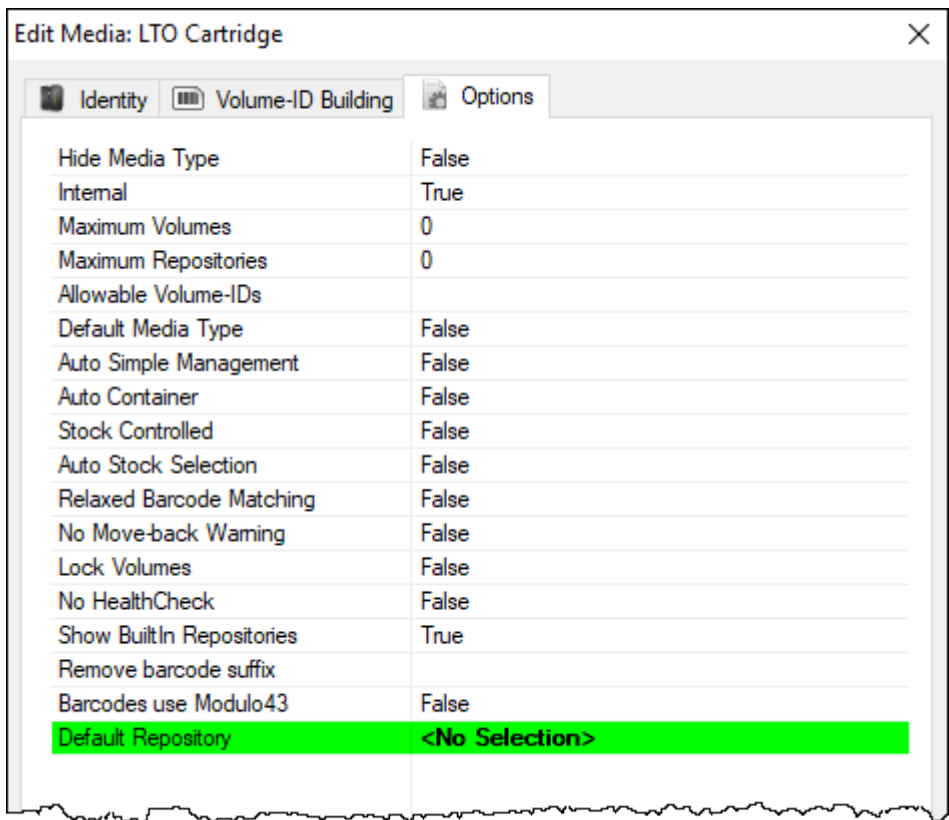


The Built-In [Repositories](#) often do not exist as locations, but are used as settings in the Options Tab of the Volume Properties Window to dictate movements.

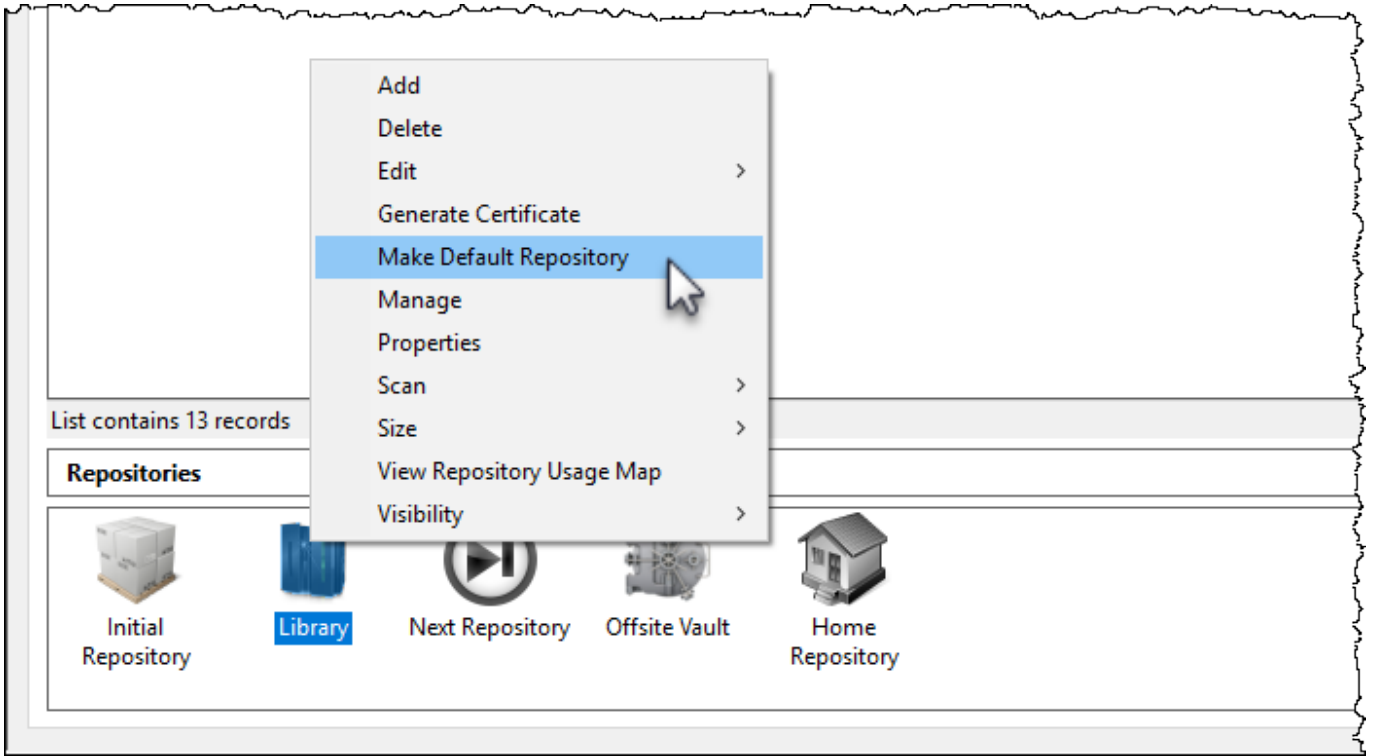
Built In Repository Functions

Initial Repository

If No Selection is set in the Default Repository field in the Media Type Properties Window's Options Tab, newly added [Volumes](#) will be allocated to the Initial [Repositories](#).



Any other [Repositories](#) may be set as the default location for new [Volumes](#) by right-clicking the required [Repository](#) and selecting Make Default Repository

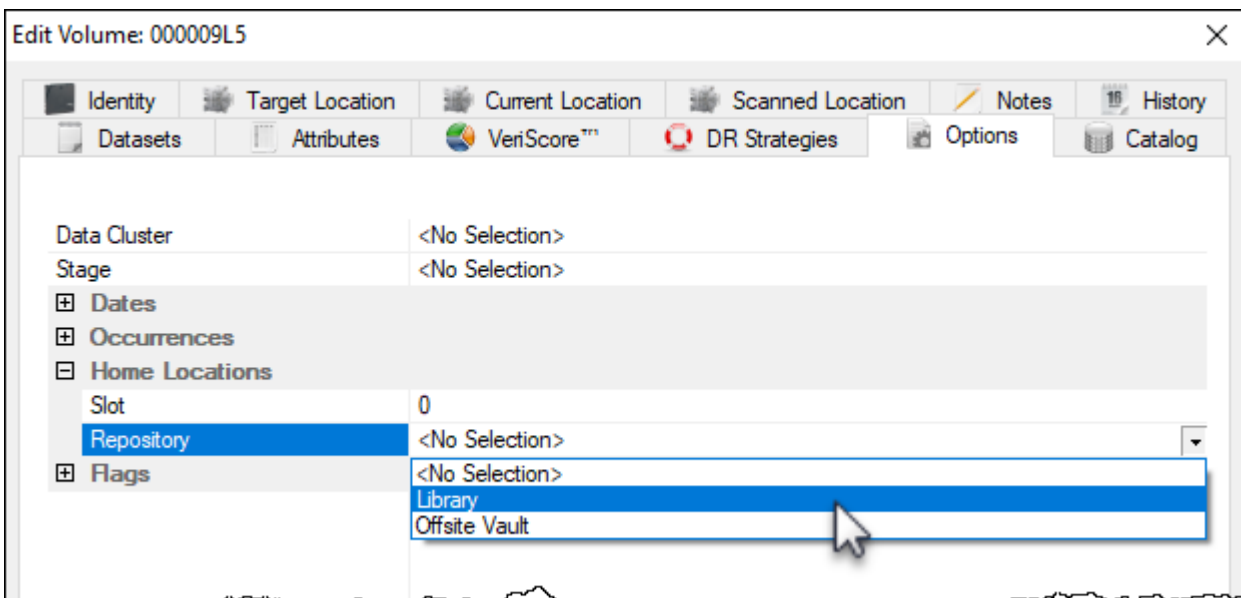


Home Repository

Dragging and dropping [Volumes](#) to the Home [Repository](#) places them into a move status to the [Repository](#) set as the Home Repository in the [Volume Properties Window Options](#) tab.

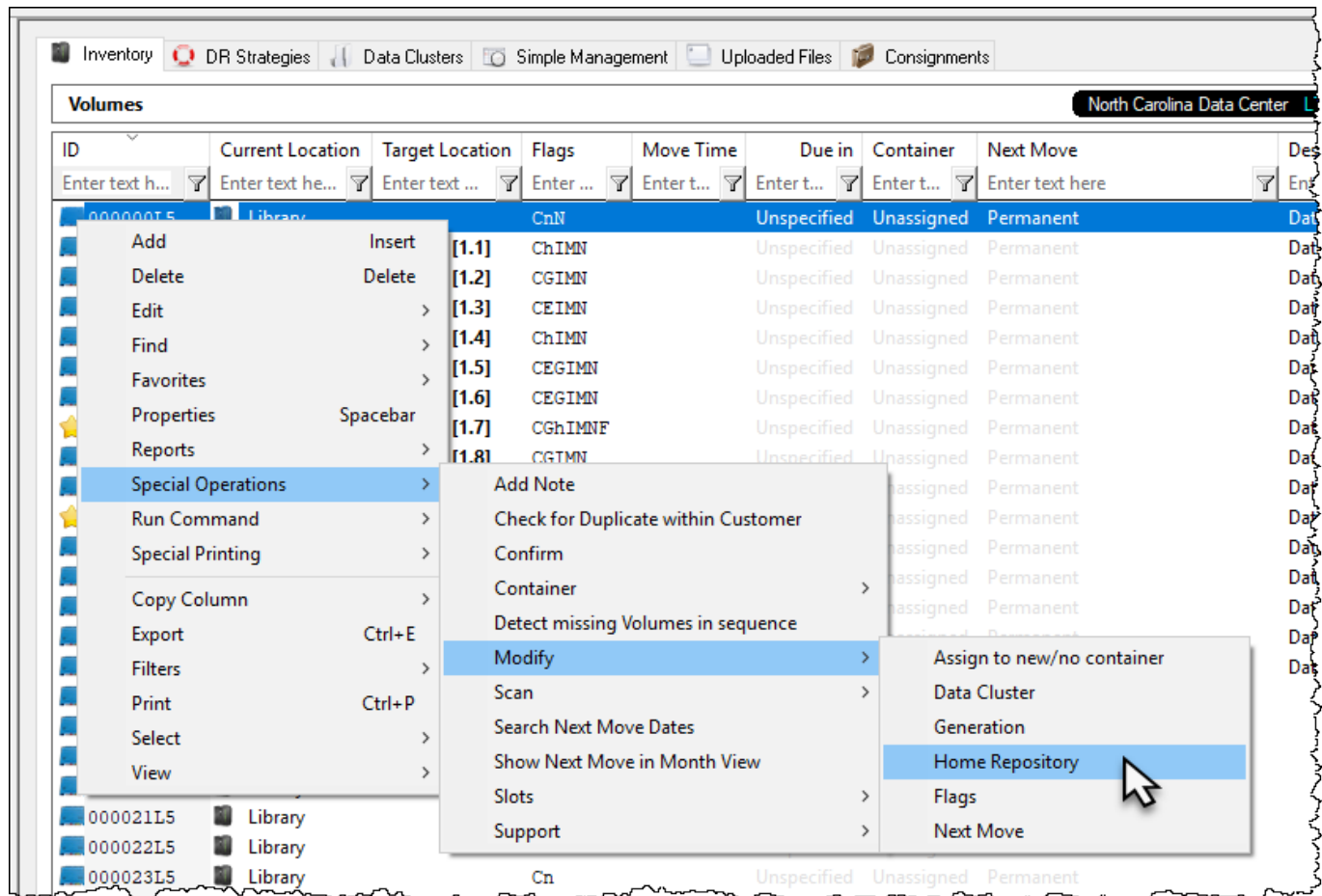
An example for using this function would be [Volumes](#) returning from offsite storage back on-site and needing to be stored in different racks ([repositories](#)). Having the required rack set for each [Volume](#) allows you to drag and drop all the [Volumes](#) on the Home [Repository](#) and letting TapeTrack sort which [Repository](#) each of the [Volumes](#) belong in, saving you having to separate each group of [Volumes](#) for each [Repository](#) manually.

A [Volume's Home Repository](#) can be set in the Volume Properties Window Options Tab.

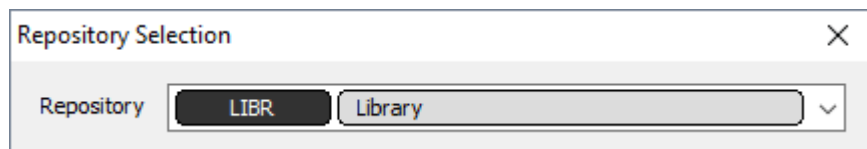


or by right-clicking [Volumes](#) in the Volume List, then selecting [Special Operations](#), Modify, and Home

Repository. Selecting a range of **Volumes** allows you to assign multiple **Volumes** Home **Repository** in the one operation.



Select **Repository** from popup window drop-down box.



Next Repository

Drag and dropping **Volumes** to the next **Repository** places them into a move status to the **Repository** set as the Next **Repository** in the **Volume** Properties Window Options tab.

From: <https://rtfm.tapetrack.com/> - **TapeTrack Documentation**

Permanent link: https://rtfm.tapetrack.com/master/built_in_repositories?rev=1571267702

Last update: **2025/01/21 22:07**

