

Confirming Volumes Manually

While it is possible to confirm volumes into the target repository using different methods, scanning in with a barcode scanner is the recommended method as it removes most possibilities of operator error from both the sending and receiving locations and operators.

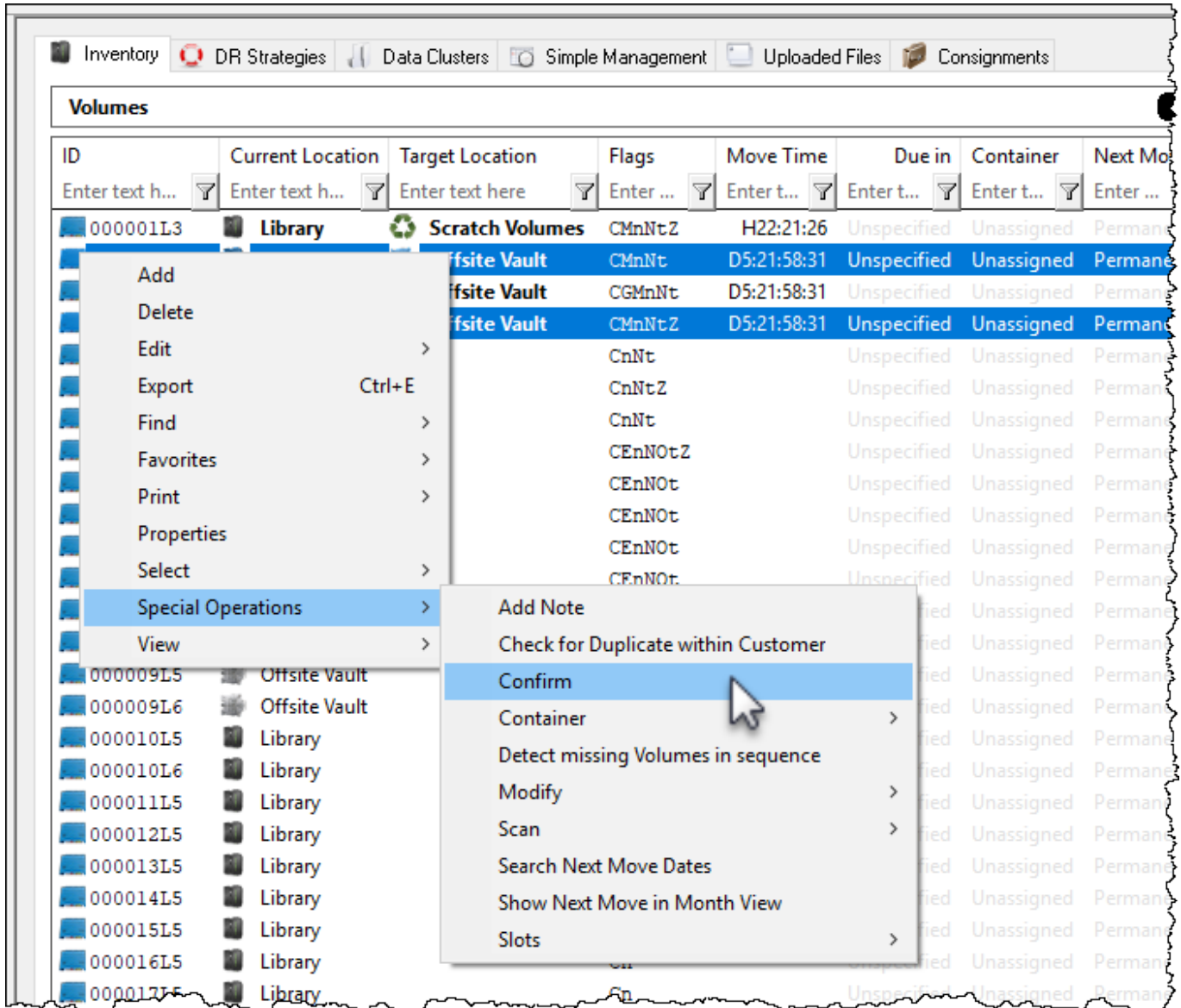
Confirming volumes manually can be accomplished by, manually via TapeMaster, scanning volumes in to the Target Repository via scanner, cut and paste and input file.



If slotting is enabled for the target repository you cannot confirm a volume until it is assigned to a slot

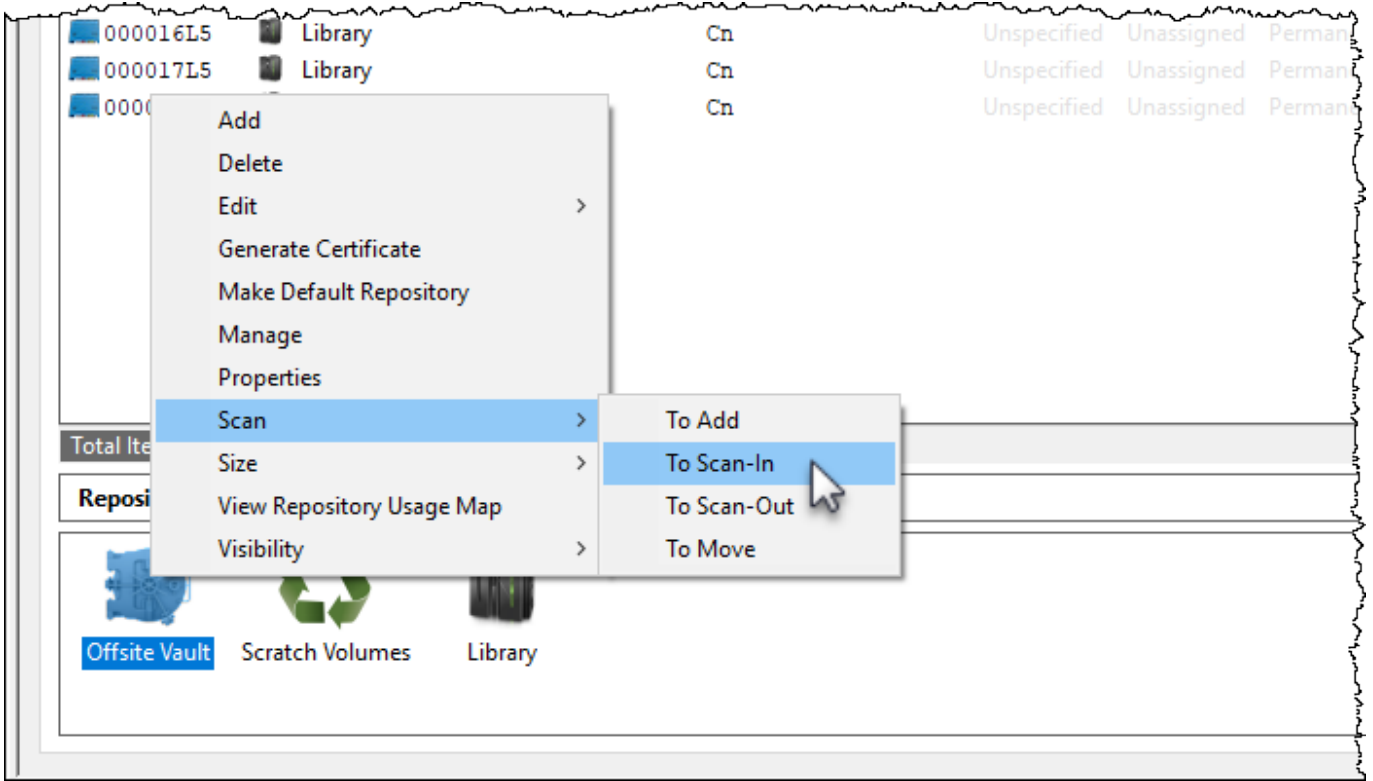
Confirming Volumes Manually Via TapeMaster

Select a volume or range select volumes to be confirmed, right click and select Special Operations → Confirm



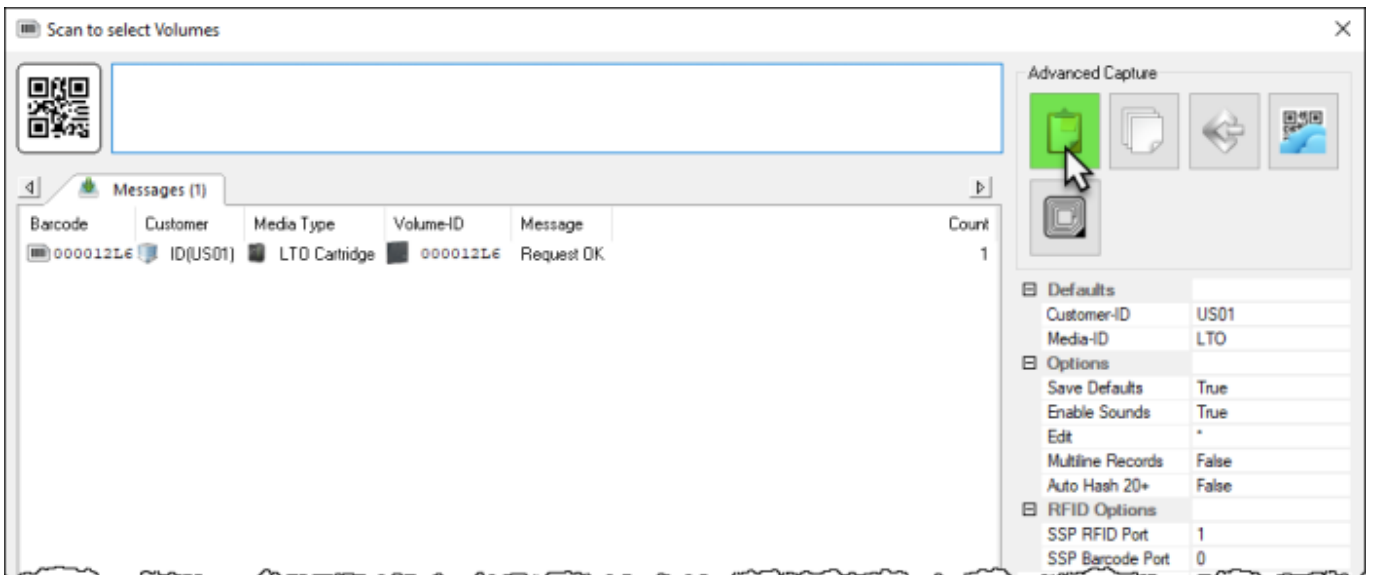
Confirming Volumes Via The Scan In Window

Right click the target repository and select Scan-In to open the scan window and select preferred input method from below.



Confirming Volumes From Windows Clipboard

Copy the volume ID's to the windows clipboard. Click the Clipboard icon on the scan window to paste in volume ID's. confirming them into the target repository.



From: <https://rtfm.tapetrack.com/> - **TapeTrack Documentation**

Permanent link: https://rtfm.tapetrack.com/master/confirm_volumes_manually?rev=1524622614

Last update: **2025/01/21 22:07**



