

Selecting A Container And Adding Volumes

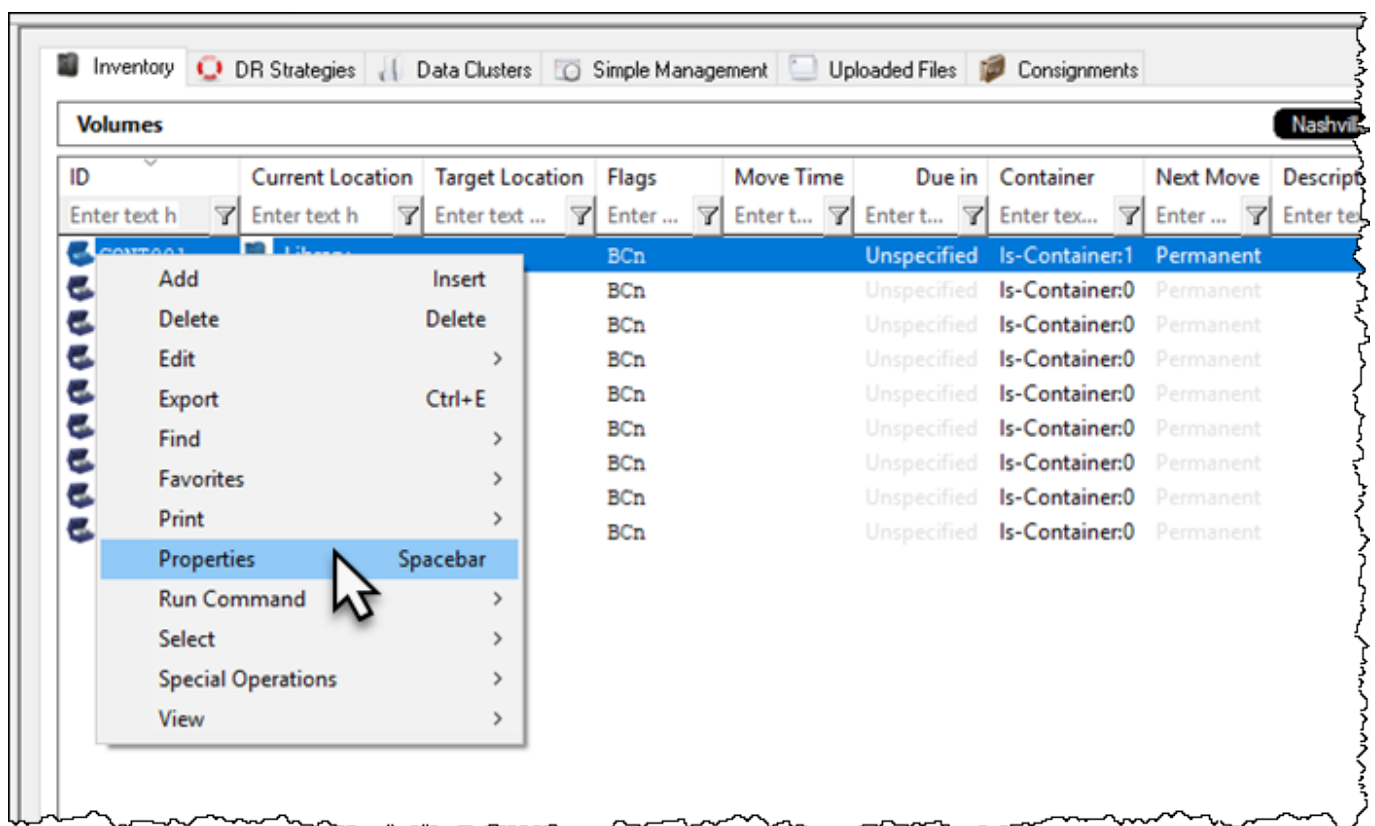
Adding Volumes From Windows Clipboard

Copy Volume-ID's to your windows clipboard,



To paste in volumes you must either select a container in the same media type as the volumes or ensure copied Volume-ID's are **fully qualified**

Right-click container and select Properties



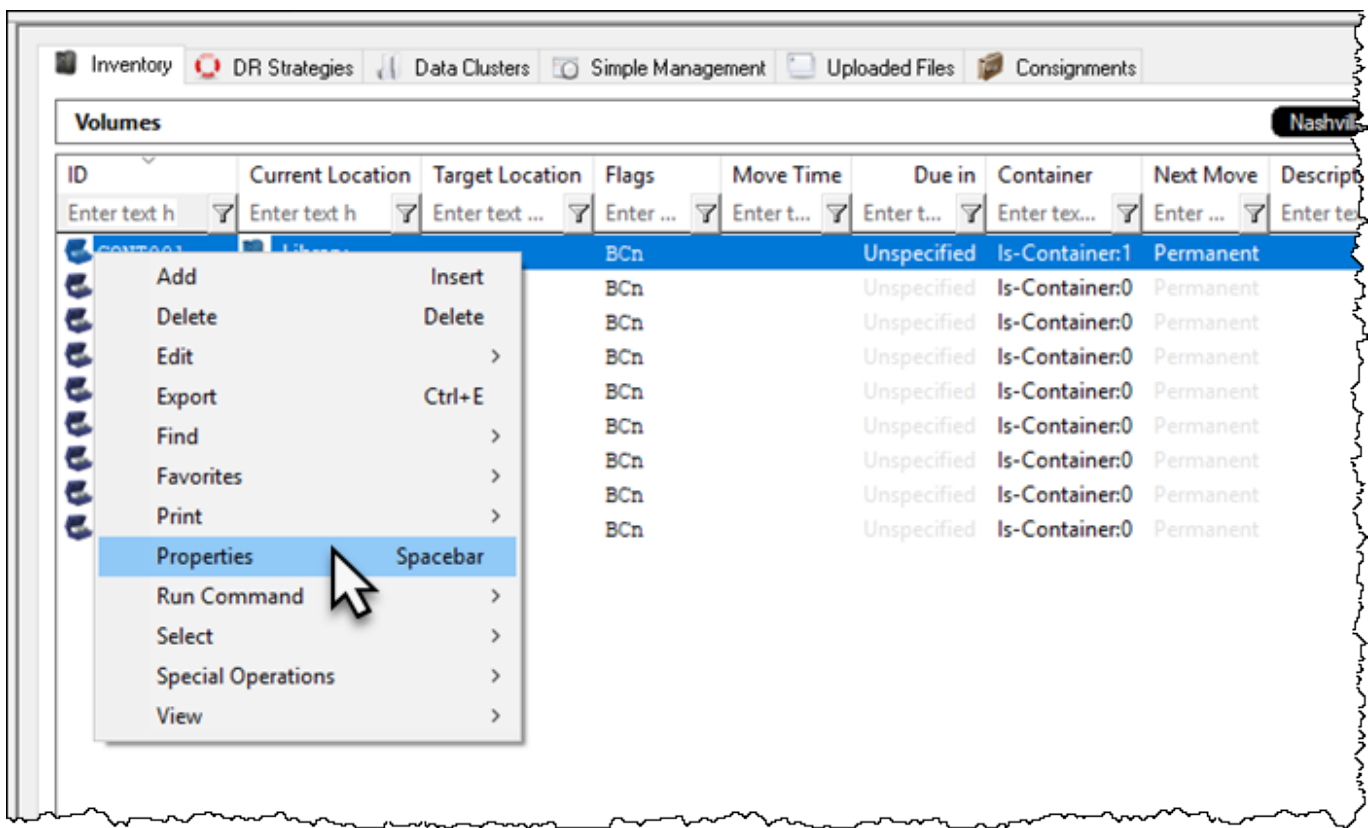
Select the **Container Contents** tab.

Right-click main window and select Edit → Paste Volumes

Click Save to close container properties window.

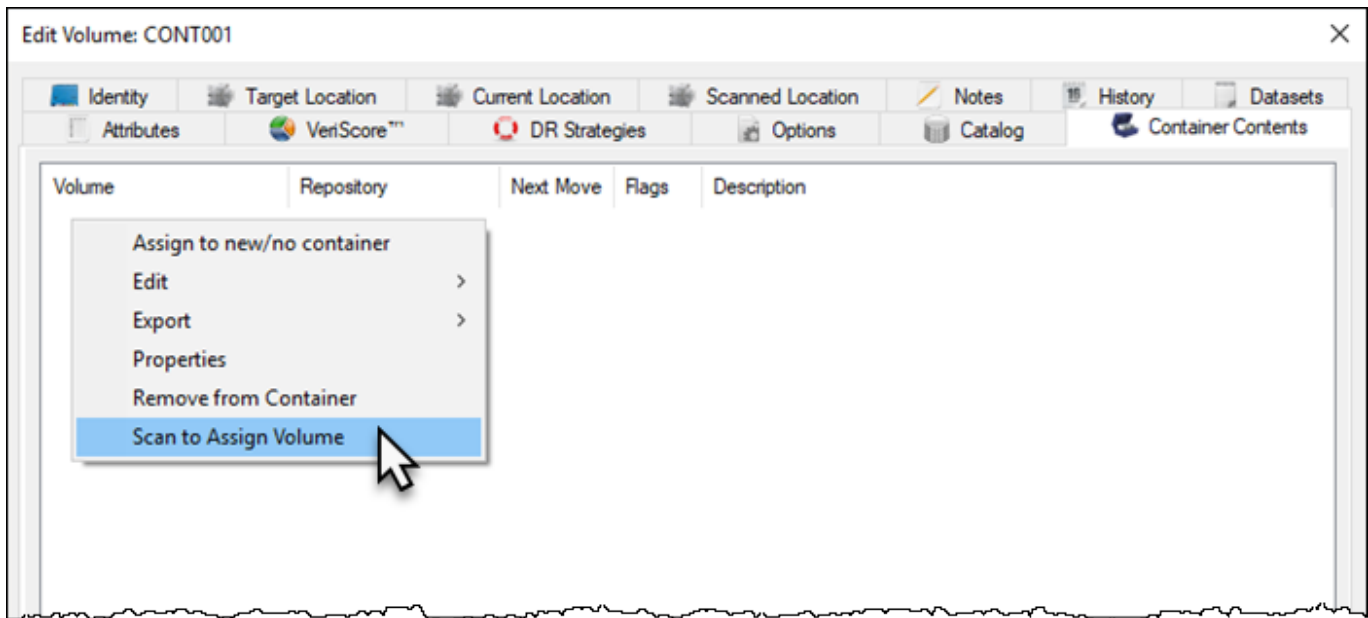
Adding Volumes Via Scan Window

Right-click container and select Properties, or double click.




Select **Container Contents** tab.

Right-click main window and select Scan to Assign Volume to open the scan-in window.



Scan the volumes, using your preferred [scanning method](#).

 If scanning unqualified barcodes ensure correct [Customer-ID](#) and [Media-ID](#) are set in the **Default** fields in the top right of the scan window.

Click X at the top right of the scan-in window to close.

Click Save to close the container properties window.

From:

<https://rtfm.tapetrack.com/> - **TapeTrack Documentation**

Permanent link:

https://rtfm.tapetrack.com/master/container_add_volume_inventory?rev=1650545478

Last update: **2025/01/21 22:07**

