

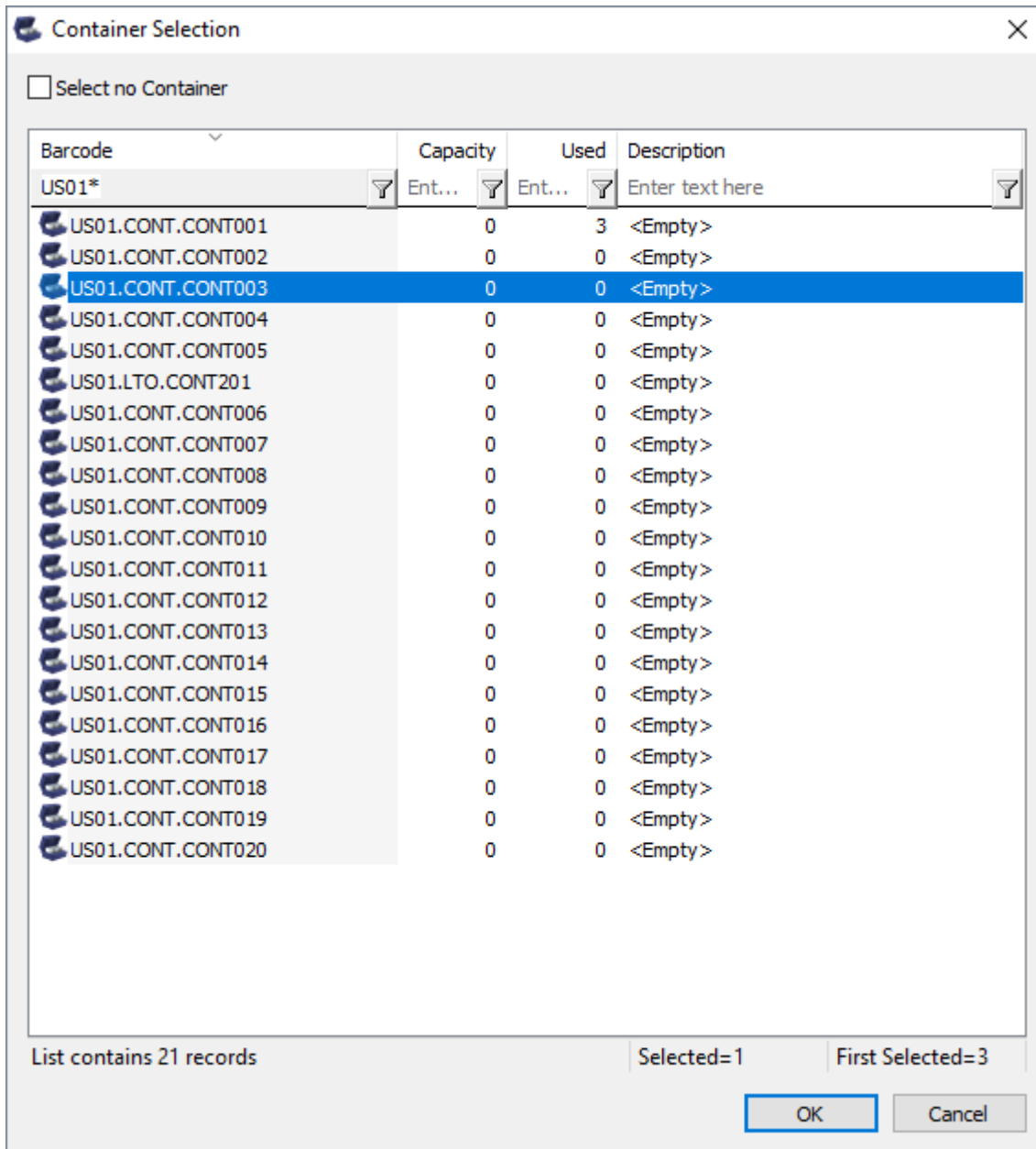


Barcode	Capacity	Used	Description
Enter text here	Ent...	Ent...	Enter text here
US03.LTO.CONT202	20	20	<Empty>
US03.LTO.CONT203	20	19	<Empty>
US01.CONT.CONT001	0	3	<Empty>
US01.CONT.CONT002	0	0	<Empty>
<b>US01.CONT.CONT003</b>	0	0	<Empty>
US01.CONT.CONT004	0	0	<Empty>
US01.CONT.CONT005	0	0	<Empty>
US01.LTO.CONT201	0	0	<Empty>
US03.CONT.0000	0	0	<Empty>
US03.CONT.0009	0	0	<Empty>
US03.CONT.0010	0	1	<Empty>
US03.CONT.0011	0	0	<Empty>
US03.CONT.0012	0	0	<Empty>
US03.CONT.0013	0	0	<Empty>
US03.CONT.0014	0	0	<Empty>
US03.CONT.0015	0	0	<Empty>
US03.CONT.0016	0	0	<Empty>
US03.CONT.0017	0	0	<Empty>
US03.CONT.0018	0	0	<Empty>
US03.CONT.0019	0	1	<Empty>
US03.CONT.0020	0	0	<Empty>
US02.LTO.000035L6	0	0	<Empty>
US01.CONT.CONT006	0	0	<Empty>
US01.CONT.CONT007	0	0	<Empty>
US01.CONT.CONT008	0	0	<Empty>
US01.CONT.CONT009	0	0	<Empty>

List contains 37 records      Selected=1      First Selected=5

OK      Cancel

If you have a large quantity of containers for multiple customers, filtering results on barcode values (e.g. **US01\*** for all US01 containers) can simplify the selection by removing unwanted containers from the display.

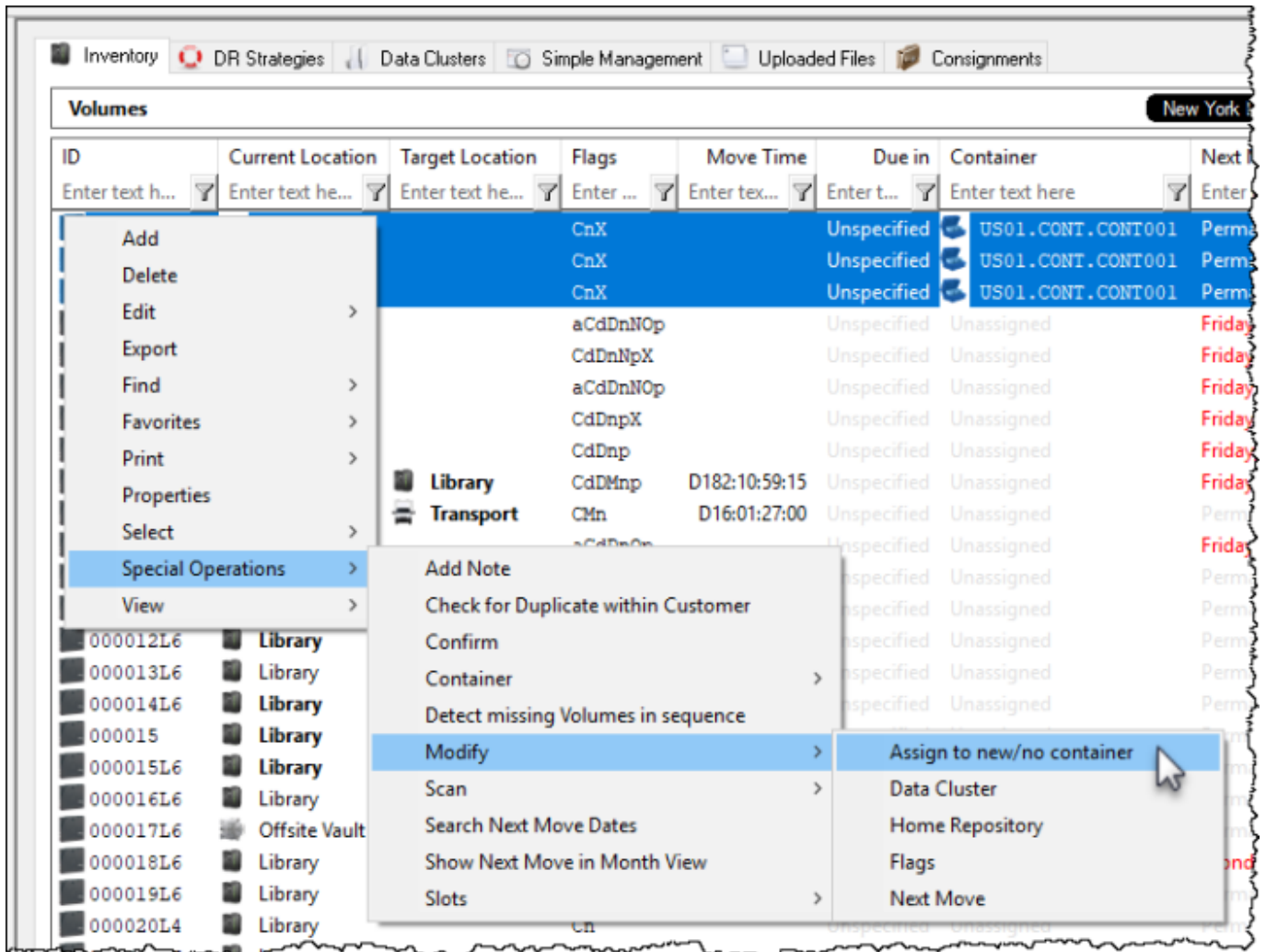


Other filters, container capacity, container content quantity (ie. use 0 for empty containers) or description can also be used to narrow results for container selection.

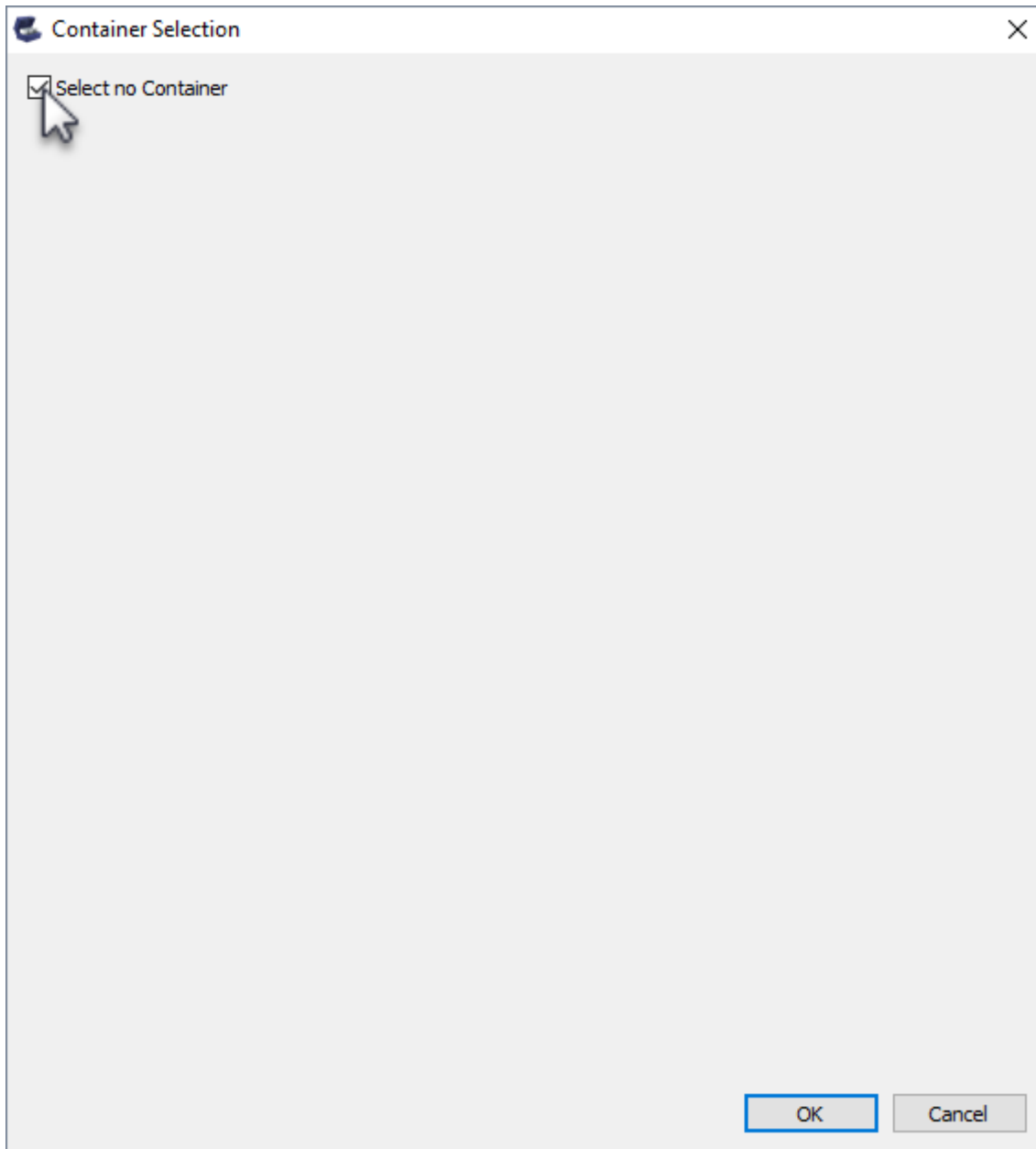
Click OK to save results and exit back to the inventory window.

## Remove Volumes From Container

Select a volume or range of volumes (shift + click and or control + click) from the inventory window to remove from container/s. Volumes assigned to different containers can be selected and removed at the same time, there is no need to select one container at a time.



From the **Container Selection** window check the Select No Container checkbox at the top left. This will remove the displayed containers.



Click OK to remove the volumes from the assigned containers and exit back to the inventory window.

From:  
<https://rtfm.tapetrack.com/> - **TapeTrack Documentation**

Permanent link:  
[https://rtfm.tapetrack.com/master/container\\_selection?rev=1517963299](https://rtfm.tapetrack.com/master/container_selection?rev=1517963299)

Last update: **2025/01/21 22:07**

