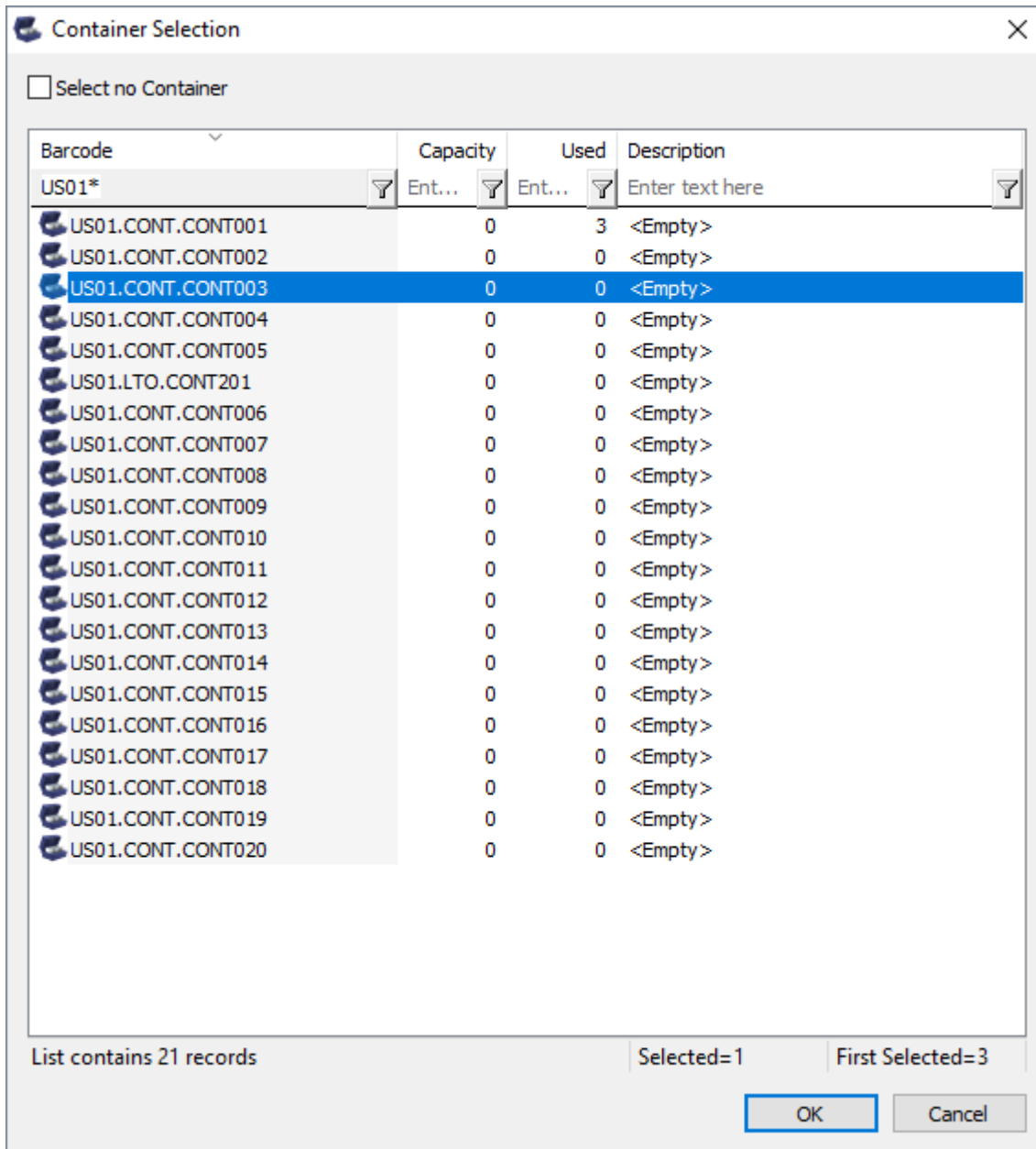


Select no Container

Barcode	Capacity	Used	Description
Enter text here	Ent...	Ent...	Enter text here
US03.LTO.CONT202	20	20	<Empty>
US03.LTO.CONT203	20	19	<Empty>
US01.CONT.CONT001	0	3	<Empty>
US01.CONT.CONT002	0	0	<Empty>
US01.CONT.CONT003	0	0	<Empty>
US01.CONT.CONT004	0	0	<Empty>
US01.CONT.CONT005	0	0	<Empty>
US01.LTO.CONT201	0	0	<Empty>
US03.CONT.0000	0	0	<Empty>
US03.CONT.0009	0	0	<Empty>
US03.CONT.0010	0	1	<Empty>
US03.CONT.0011	0	0	<Empty>
US03.CONT.0012	0	0	<Empty>
US03.CONT.0013	0	0	<Empty>
US03.CONT.0014	0	0	<Empty>
US03.CONT.0015	0	0	<Empty>
US03.CONT.0016	0	0	<Empty>
US03.CONT.0017	0	0	<Empty>
US03.CONT.0018	0	0	<Empty>
US03.CONT.0019	0	1	<Empty>
US03.CONT.0020	0	0	<Empty>
US02.LTO.000035L6	0	0	<Empty>
US01.CONT.CONT006	0	0	<Empty>
US01.CONT.CONT007	0	0	<Empty>
US01.CONT.CONT008	0	0	<Empty>
US01.CONT.CONT009	0	0	<Empty>

List contains 37 records Selected=1 First Selected=5

If you have a large quantity of Containers for multiple customers, filtering results on barcode values (e.g. **US01*** for all US01 Containers) can simplify the selection by removing unwanted Containers from the display.



Other filters, Container capacity, Container content quantity (ie. use 0 for empty Containers) or description can also be used to narrow results for Container selection.

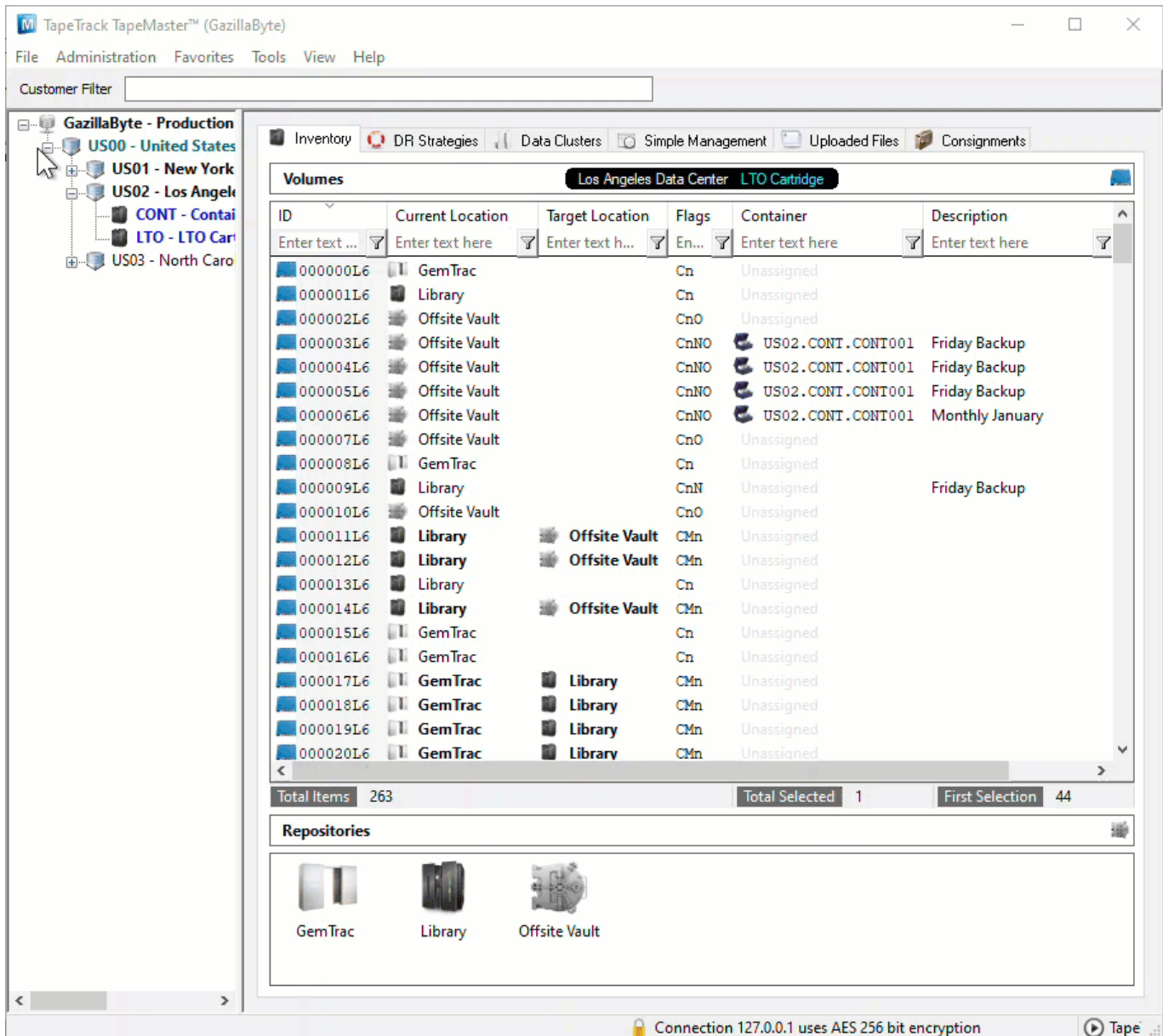
Click OK to save results and exit back to the inventory window.

2018/08/28 00:07 · Scott Cunliffe

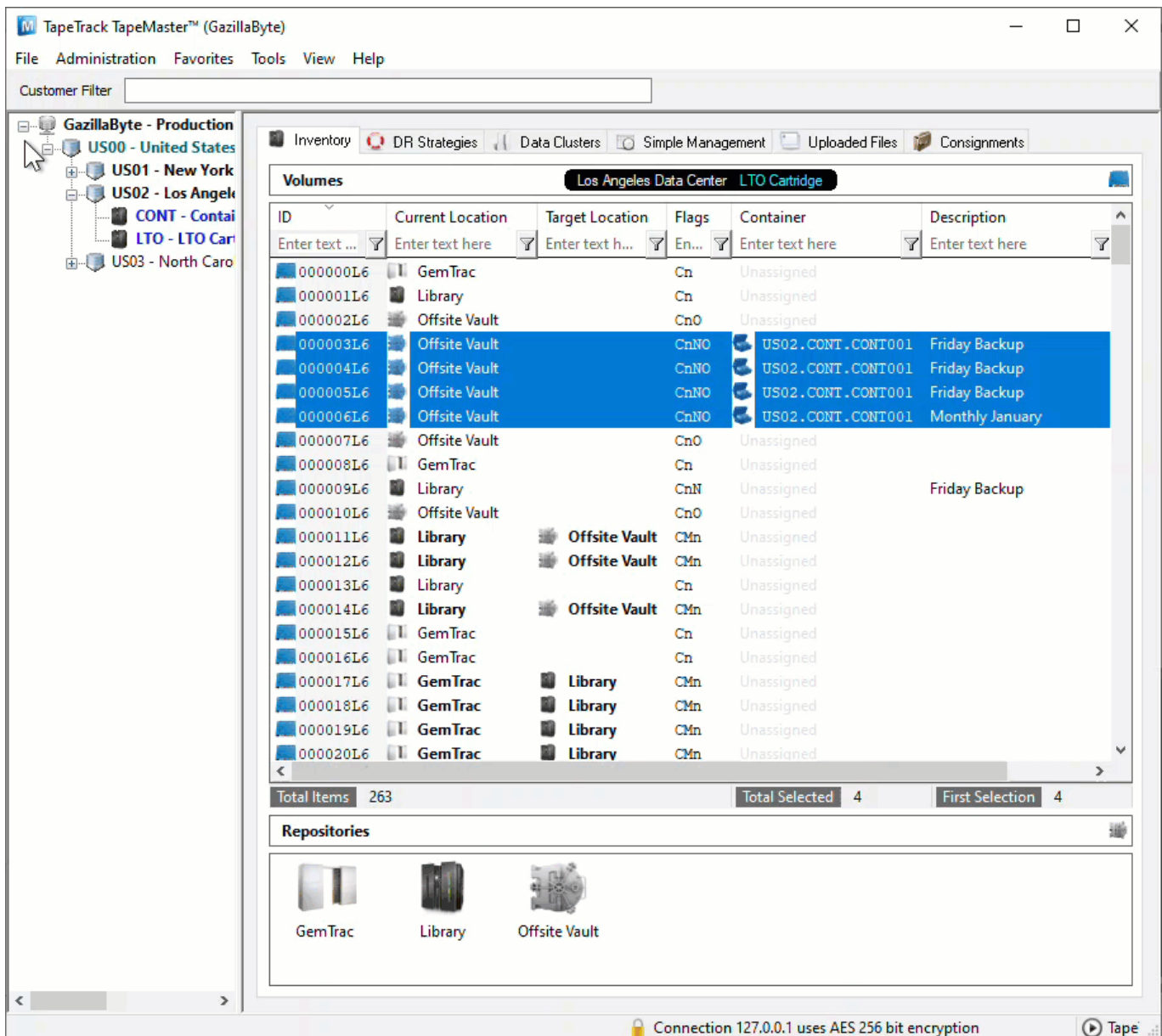
Remove Volumes From Container

Remove Volumes Via The Volume Media Inventory Window

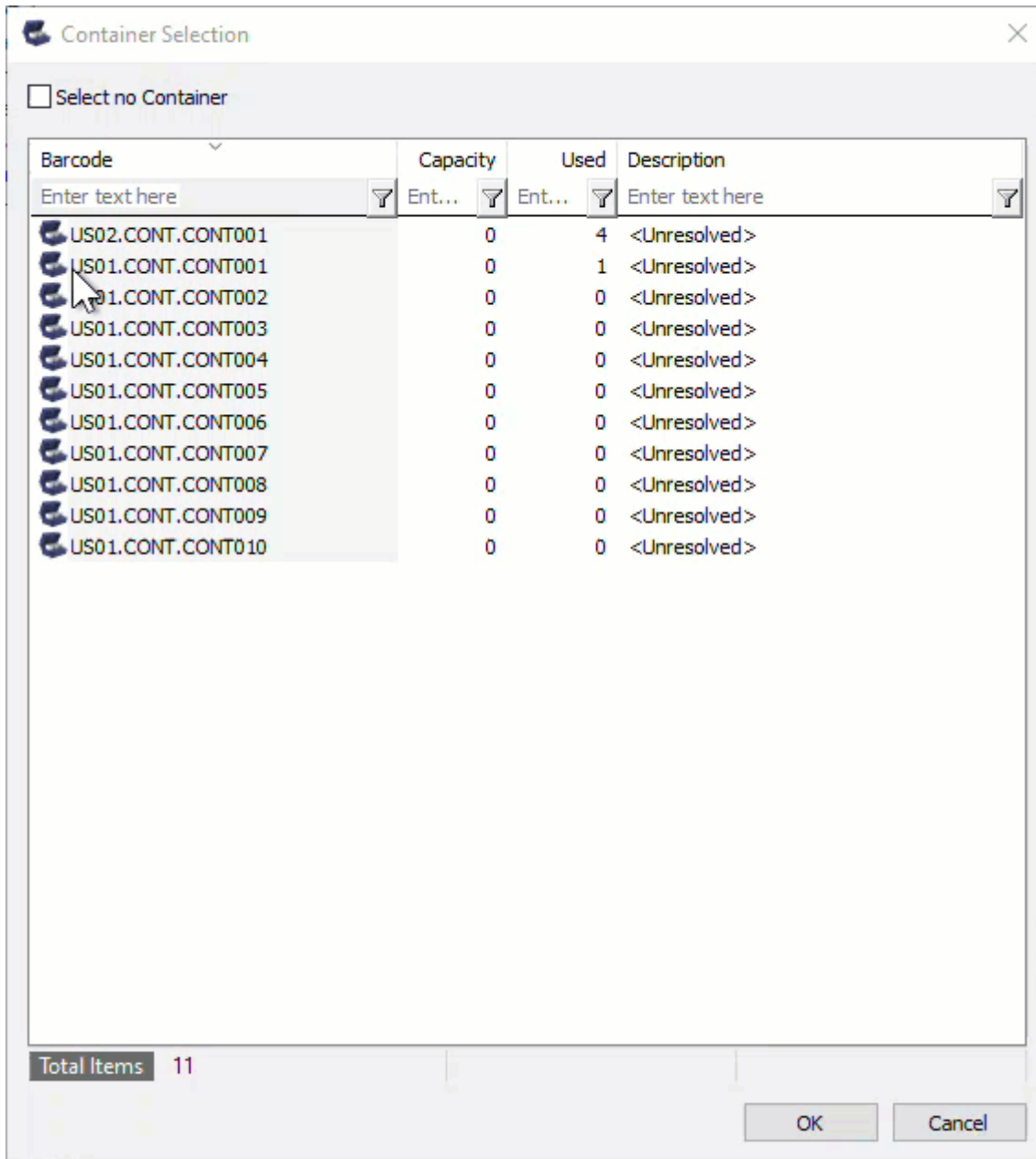
Select a [Volume](#) or range of [Volumes](#) (Shift+Click and or Ctrl+Click) from the Inventory window to remove from Container/s. [Volumes](#) assigned to different Containers can be selected and removed at the same time, there is no need to handle one Container at a time.



Right click on the highlighted Volumes and select Special Operations > Modify > Assign to new/no Container

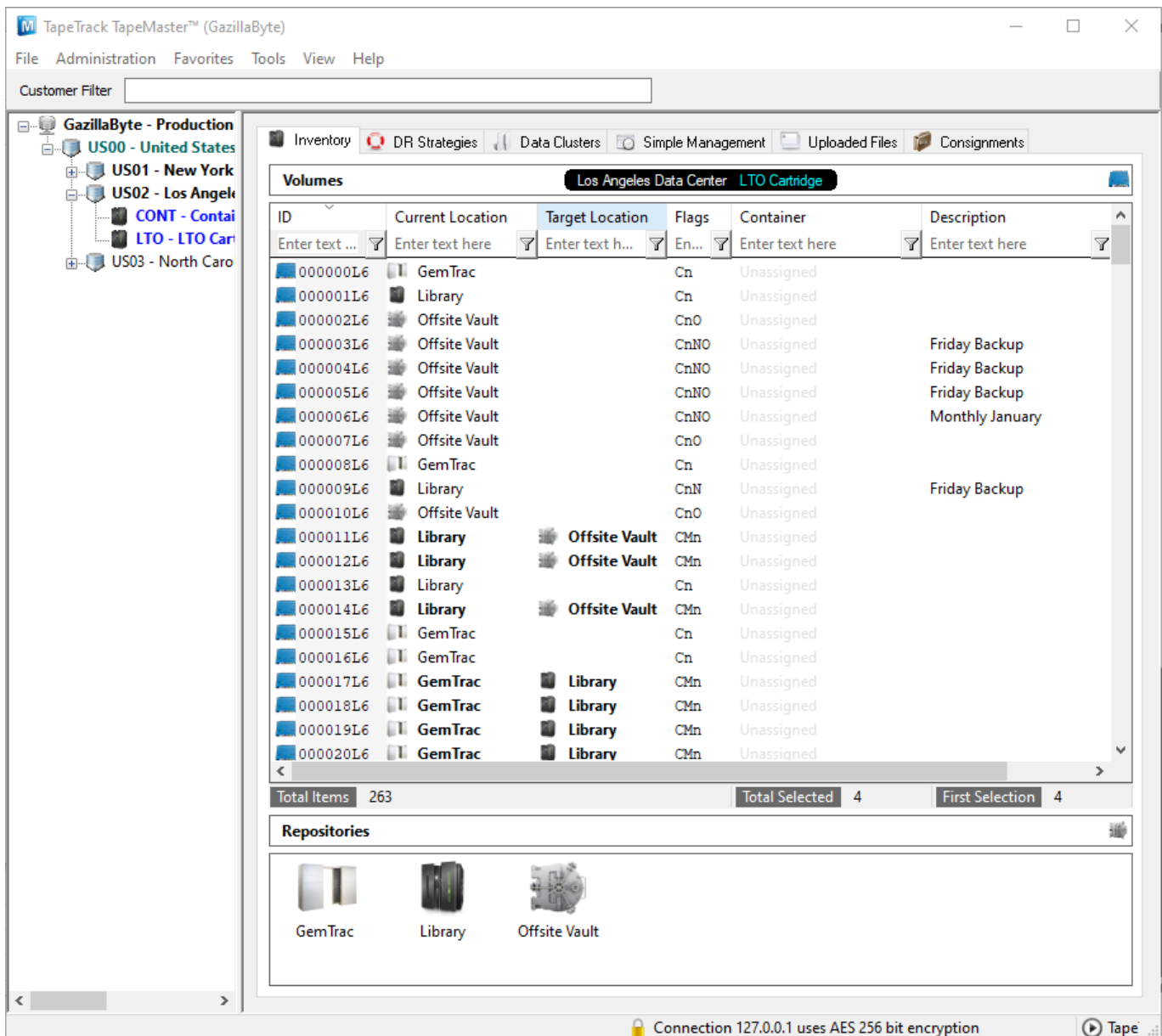


From the **Container Selection** window check the **Select No Container** checkbox at the top left. This will remove the displayed Containers.



Click OK to remove the [Volumes](#) from the assigned Containers and exit back to the inventory window.

TapeMaster will now display the [Volumes](#) with no assigned Containers.

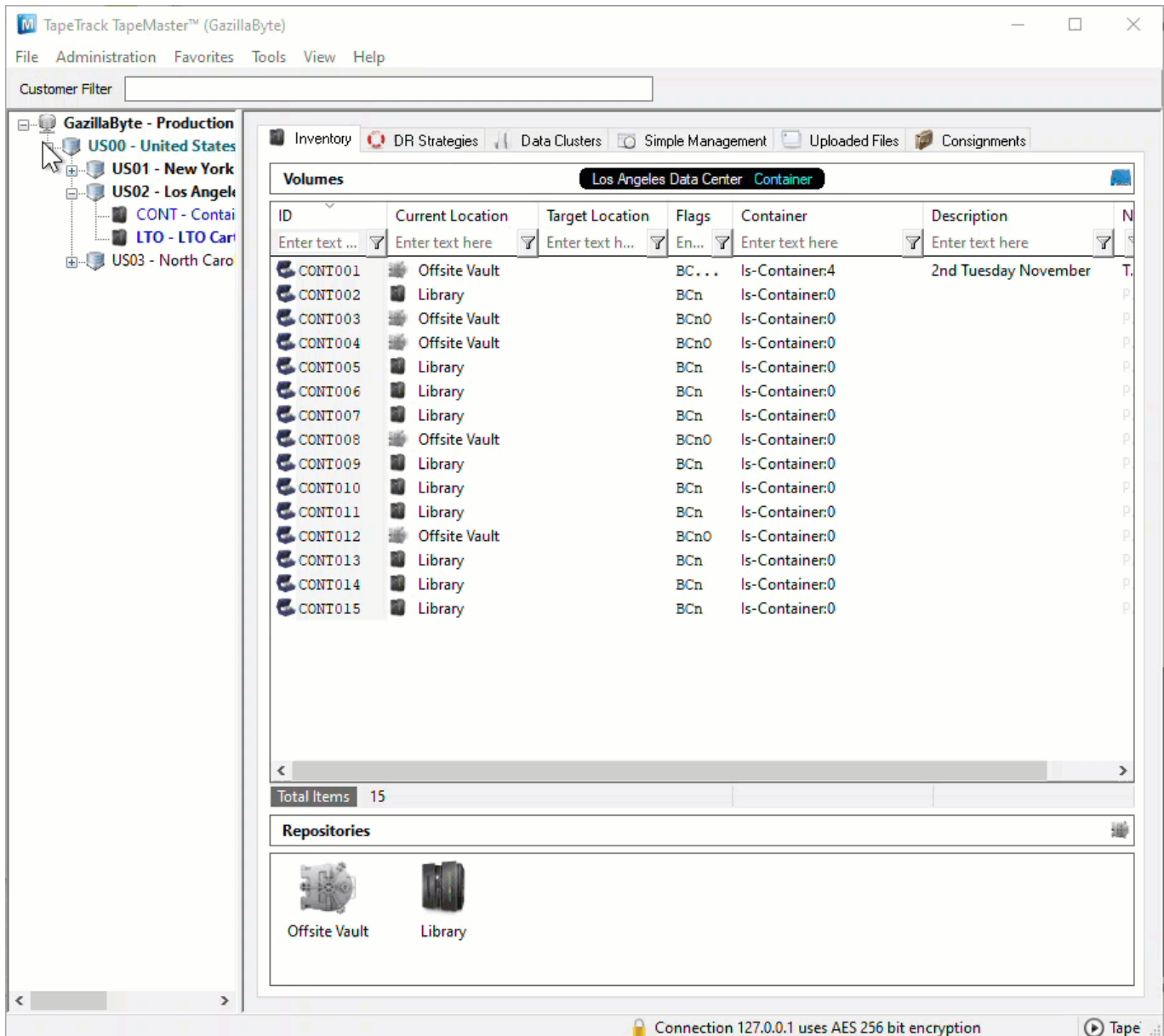


Remove Volumes Via The Container Media Inventory Window

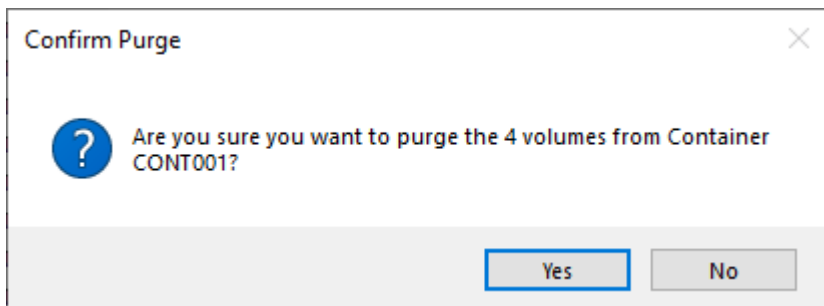
Purge Container Contents

Right click on the Container you want to remove the **Volumes** from and select **Special operations > Container > Purge**.

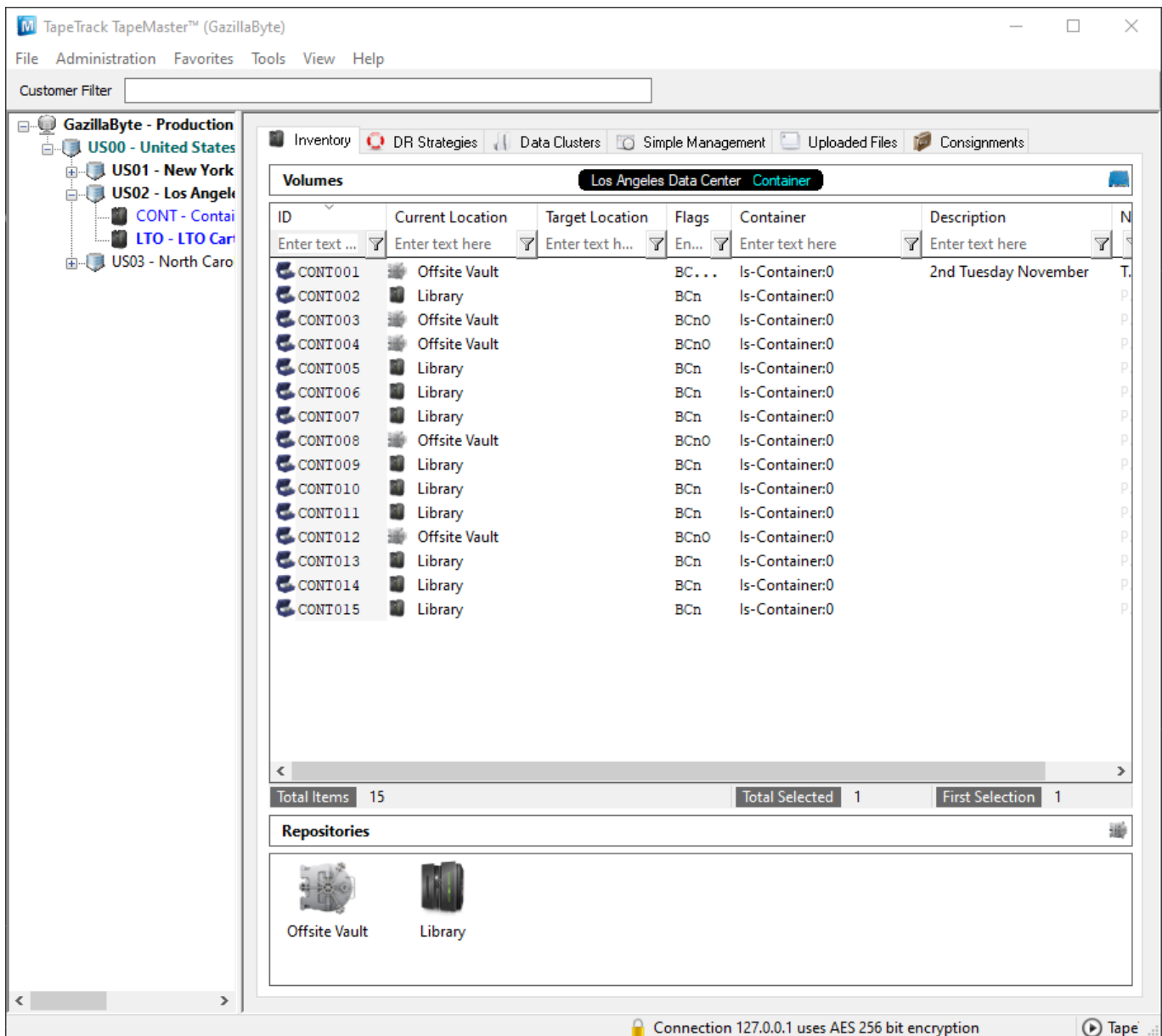
Multiple Containers can be purged together by selecting them, using **Shift+Click** or **Ctrl+Click**, before right clicking and selecting **Special operations > Container > Purge**.



Then click Yes to **Confirm purge** popup.

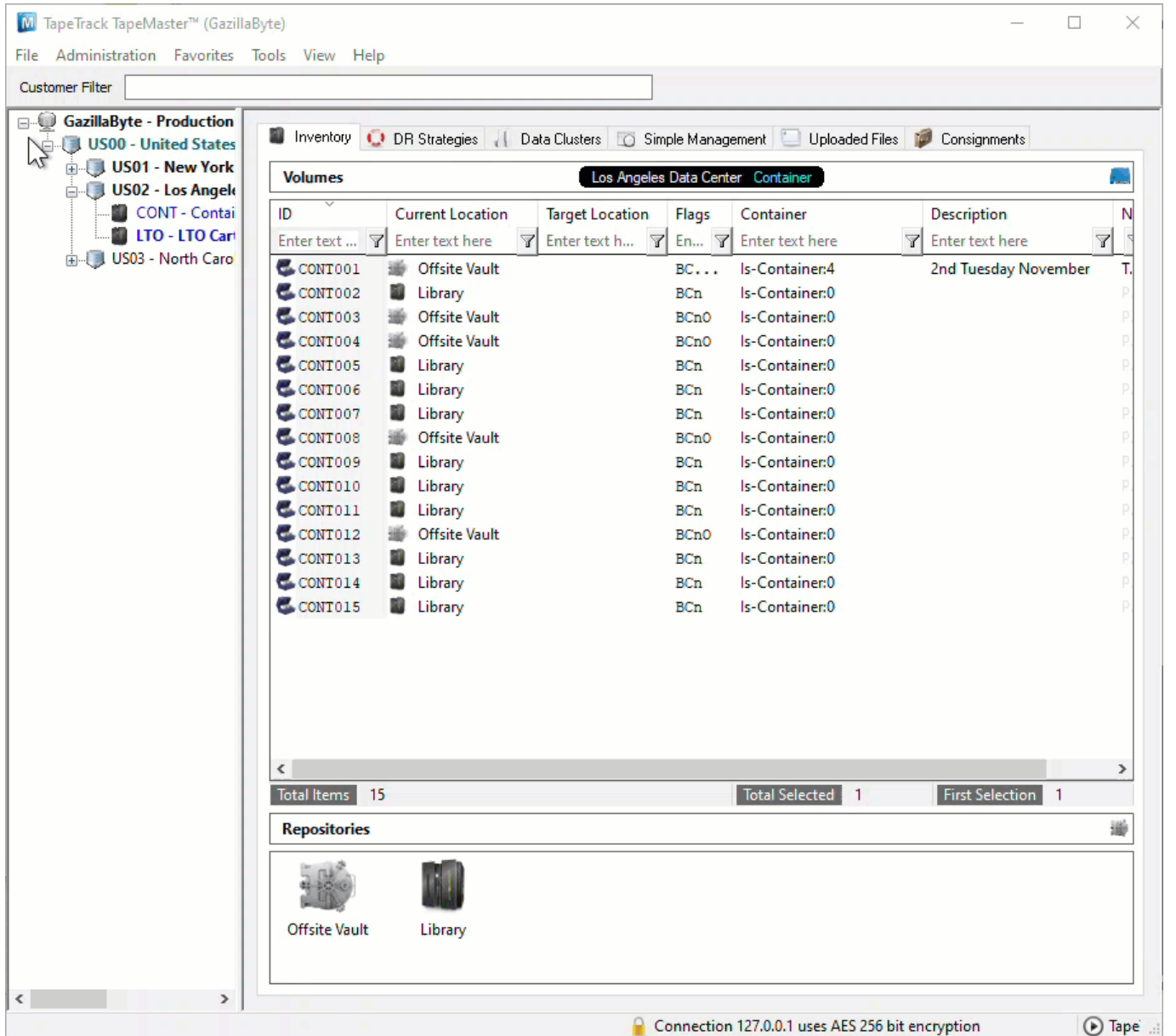


TapeMaster will now display the remaining Container contents, in this example as 0 as all **Volumes** were removed.

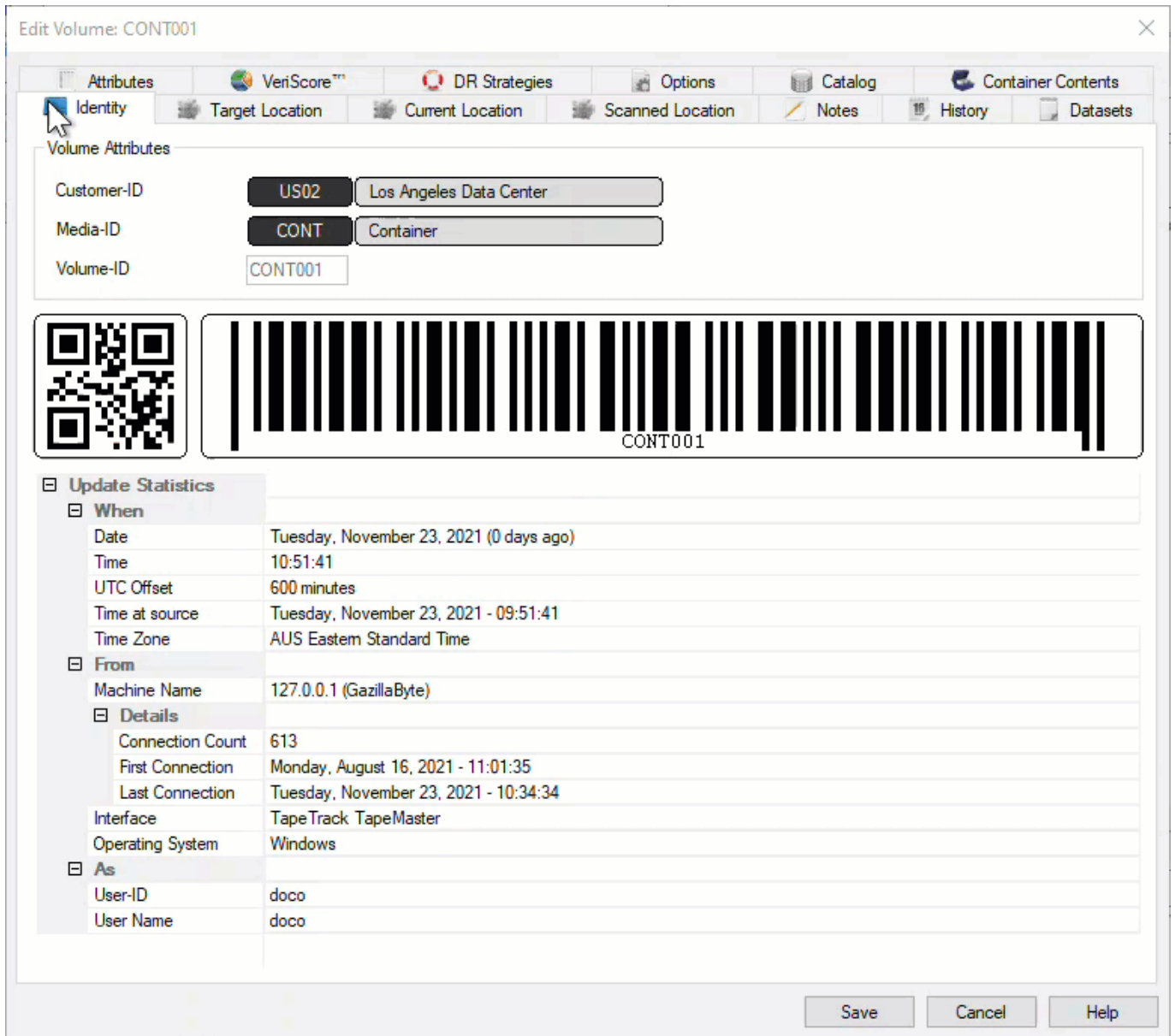


Remove Volumes Via The Container Properties Contents Tab

Right click and select Properties, or double click, the required container.



Select the Container Contents tab.



Select the required **Volumes** from the displayed list, right-click highlighted **Volumes** and click Remove From Container and Save to close window.

Volume	Repository	Next Move	Flags	Description
US02.LTO.000003L6	Offsite Vault	Permanent	CnNO	Friday Backup
US02.LTO.000004L6	Offsite Vault	Permanent	CnNO	Friday Backup
US02.LTO.000005L6	Offsite Vault	Permanent	CnNO	Friday Backup
US02.LTO.000006L6	Offsite Vault	Permanent	CnNO	Monthly January

Total Items 4

Save Cancel Help

TapeMaster will now display the remaining Container contents, in this example as 0 as all [Volumes](#) were removed.

The screenshot shows the TapeTrack TapeMaster™ (GazillaByte) application window. The title bar reads "TapeTrack TapeMaster™ (GazillaByte)". The menu bar includes "File", "Administration", "Favorites", "Tools", "View", and "Help". Below the menu is a "Customer Filter" input field. The left sidebar shows a tree view of the organization structure: "GazillaByte - Production" > "US00 - United States" > "US01 - New York" > "US02 - Los Angeles" > "CONT - Containers" > "LTO - LTO Cartridges" > "US03 - North Carolina". The main area is titled "Los Angeles Data Center Container" and displays a table of containers. The table has columns for ID, Current Location, Target Location, Flags, Container, and Description. Below the table, it shows "Total Items: 15", "Total Selected: 1", and "First Selection: 1". At the bottom, there are icons for "Offsite Vault" and "Library" repositories. A status bar at the bottom right indicates "Connection 127.0.0.1 uses AES 256 bit encryption" and a "Tape" icon.

ID	Current Location	Target Location	Flags	Container	Description
CONT001	Offsite Vault		BC...	Is-Container:0	2nd Tuesday November
CONT002	Library		BCn	Is-Container:0	
CONT003	Offsite Vault		BCn0	Is-Container:0	
CONT004	Offsite Vault		BCn0	Is-Container:0	
CONT005	Library		BCn	Is-Container:0	
CONT006	Library		BCn	Is-Container:0	
CONT007	Library		BCn	Is-Container:0	
CONT008	Offsite Vault		BCn0	Is-Container:0	
CONT009	Library		BCn	Is-Container:0	
CONT010	Library		BCn	Is-Container:0	
CONT011	Library		BCn	Is-Container:0	
CONT012	Offsite Vault		BCn0	Is-Container:0	
CONT013	Library		BCn	Is-Container:0	
CONT014	Library		BCn	Is-Container:0	
CONT015	Library		BCn	Is-Container:0	

2018/08/28 00:10 · Scott Cunliffe

From: <https://rtfm.tapetrack.com/> - **TapeTrack Documentation**

Permanent link: https://rtfm.tapetrack.com/master/container_selection?rev=1535415068

Last update: **2025/01/21 22:07**

