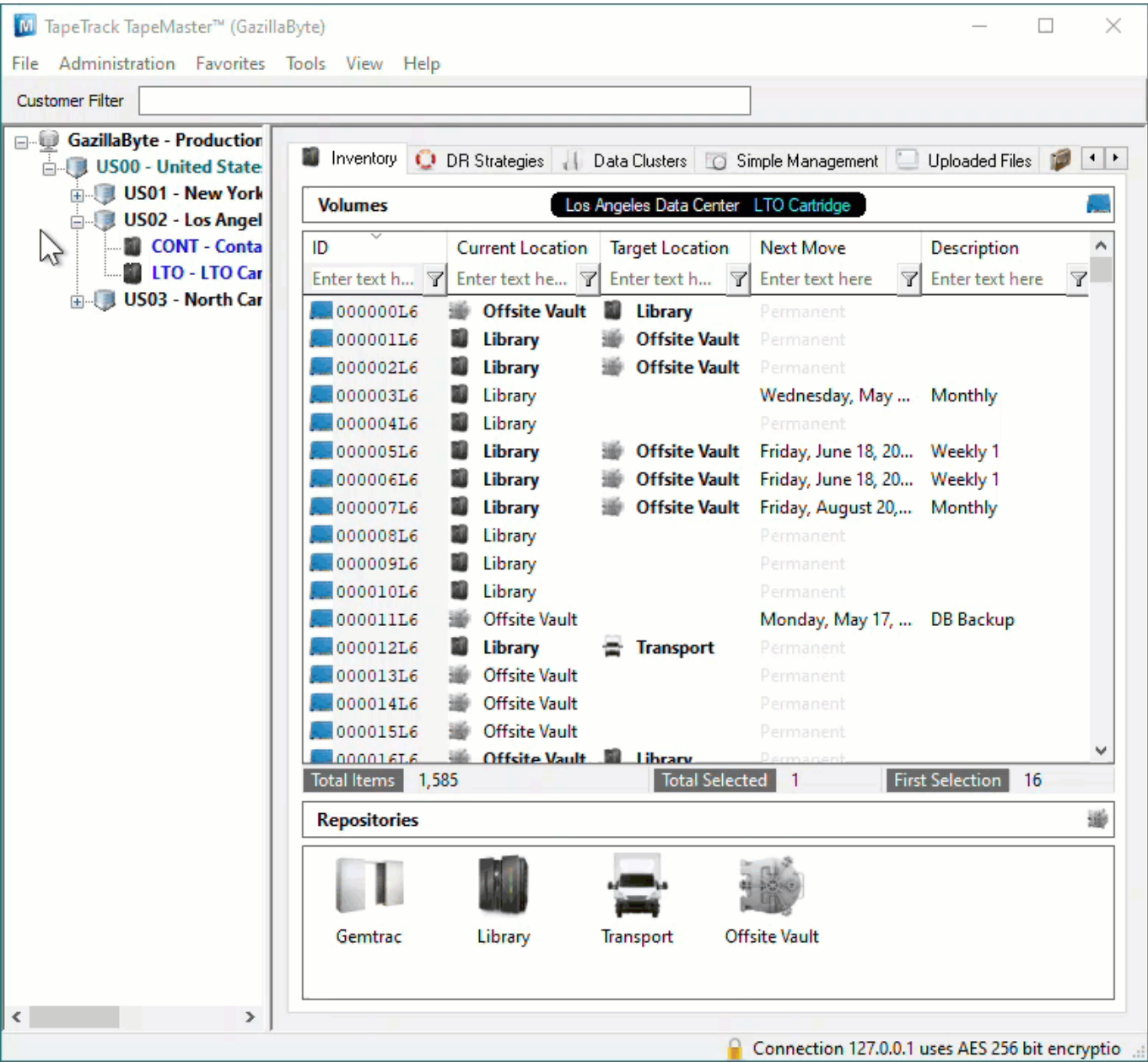


Adding and Maintaining Customers

A [Customer](#) is an owner of [Volumes](#). This page details how to Add or Delete [Customers](#).

Add Customer

To add a [Customer](#), right-click on the [Server Node](#) of the [Customer Tree](#) and select Add Customer.



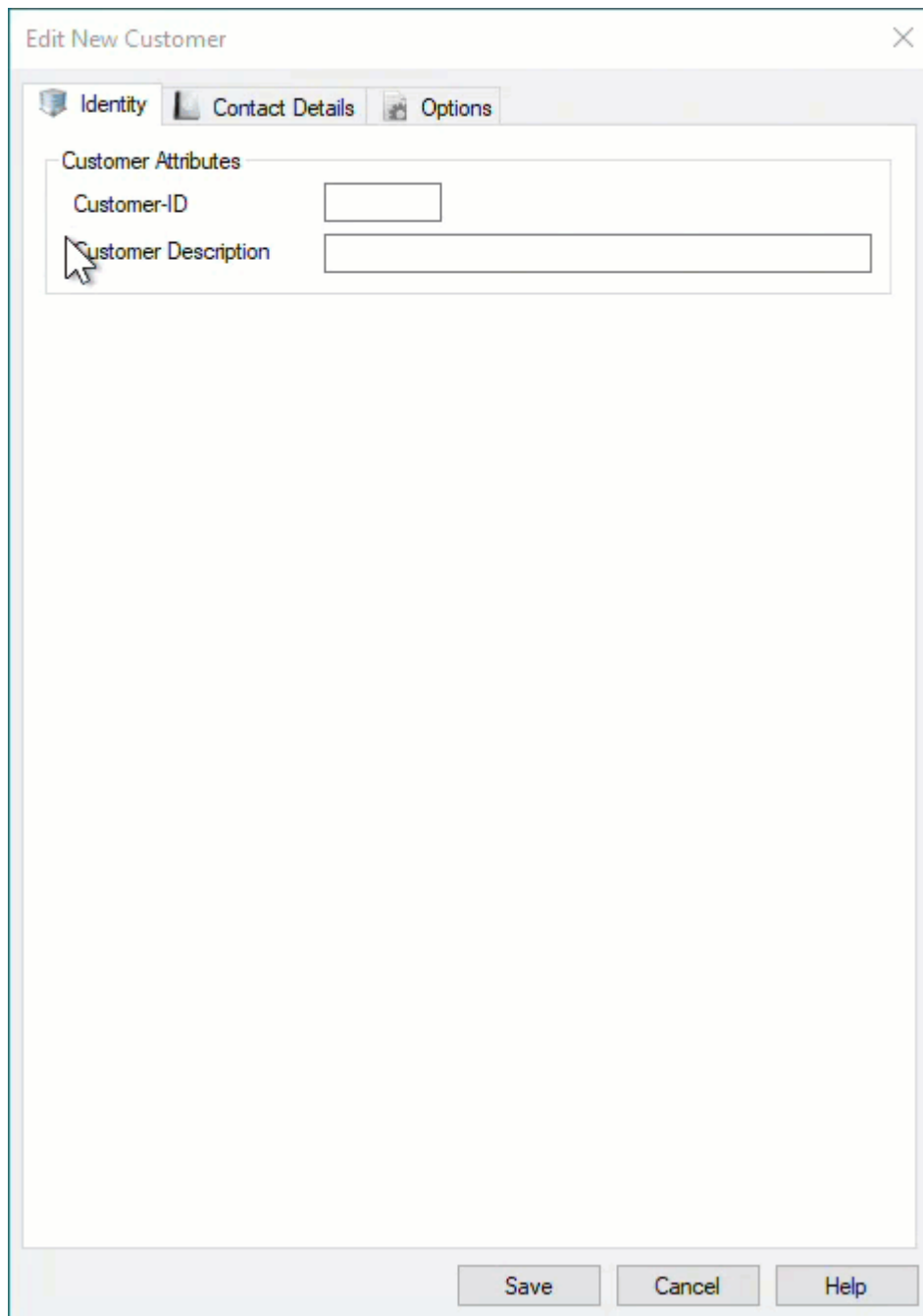
This will launch the Edit New Customer window.

Identity

The first tab on the Add Customer window is the Identity tab.

Enter the [Customer-ID](#) and a [Customer Description](#).

You can add up to four alphanumeric characters as the [Customer-ID](#) and up to forty alphanumeric characters for the [Customer Description](#).



The screenshot shows a web application window titled "Edit New Customer". It has three tabs: "Identity" (selected), "Contact Details", and "Options". Under the "Identity" tab, there is a section labeled "Customer Attributes" containing two input fields: "Customer-ID" and "Customer Description". A mouse cursor is pointing at the "Customer Description" field. At the bottom of the window are three buttons: "Save", "Cancel", and "Help".

Contact Details

The Contact Details tab provides a location for contact details for the [Customer](#).

Edit New Customer

Identity | **Contact Details** | Options

Address

Delivery Address: 4600 S Syracuse St
Denver, Colorado 80237

Options

The Options tab can be utilized to set specific details about a [Customer](#). These details are accessible at any point by right-clicking the [Customer](#), on the [Customer Tree](#) and selecting Properties.

Edit Customer:

Identity | Contact Details | Attributes | **Options** | LibraryHealth

Hide Customer	False
Disallow Customer Duplicates	False
Disallow Global Duplicates	False
Volume Lock	False
Hide No Children	False
Allowable Media-ID Filter	
Maximum number of Media-IDs	0
Holiday Group	
Customer Category	0
Parent Customer	<No Selection>
Account Number	0
Long Barcode Attribute	Description


- **Hide Customer** when set to true removes the [Customer](#) from view in the [Customer Tree](#).
- **Disallow Customer Duplicates** stops the duplication of [Volume-ID's](#) across the [Customer Media Types](#).
- **Disallow Global Duplicates** stops the duplication of [Volume-ID's](#) across all [Customers](#).
- **Volume Lock** stops any [Volumes](#) moving within this [Customer](#).
- **Hide No Children** stops the display of this [Customer](#) unless showing children or has [Media](#) defined.
- **Allowable Media-ID Filter**, if set, restricts the allowable [Volume-ID](#) formats for this [Customer](#).
- **Maximum number of Media-ID's** that can be created for this [Customer-ID](#). 0=No limit.
- **Holiday Group** assigns a group for [Simple Management](#) calculations of holidays to avoid.

- **Customer Category** is an arbitrary number that can be set to group [Customers](#) for batch processing.
- **Parent Customer** displays the current [Customer](#) as a child under the selected [Customer](#).
- **Account Number** Iron Mountain (or other third-party) account number.
- **Long Barcode Attribute** adds un-hashed long Barcode to selected Attribute.

Once you click Save, TapeMaster will open a window asking if you'd like to add some [Media](#) to this [Customer](#). If selected yes, then TapeMaster will display the Add [Media Types](#) for new Customer window. Create relevant [Media Type](#) by changing the Create option from False to True. Other fields, [Media-ID](#) and [Description](#) may be edited or customized to your required values.



If no [Media Description](#) is added, TapeMaster will display the [Media-ID](#).

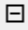
 Add Media Types for new Customer

You can now add one or more Media Types (by enabling the "Create" property).


A Media Type is a collection of media, usually group by technology type.

While it is possible to add a media type for each media type generation (i.e. LTO1, LTO2 etc), it is recommended that you group all technology generations together (i.e. LTO).


US04

 Media Type[1]

ID	LTO
Description	LTO Cartridge
Create	True

 Media Type[2]

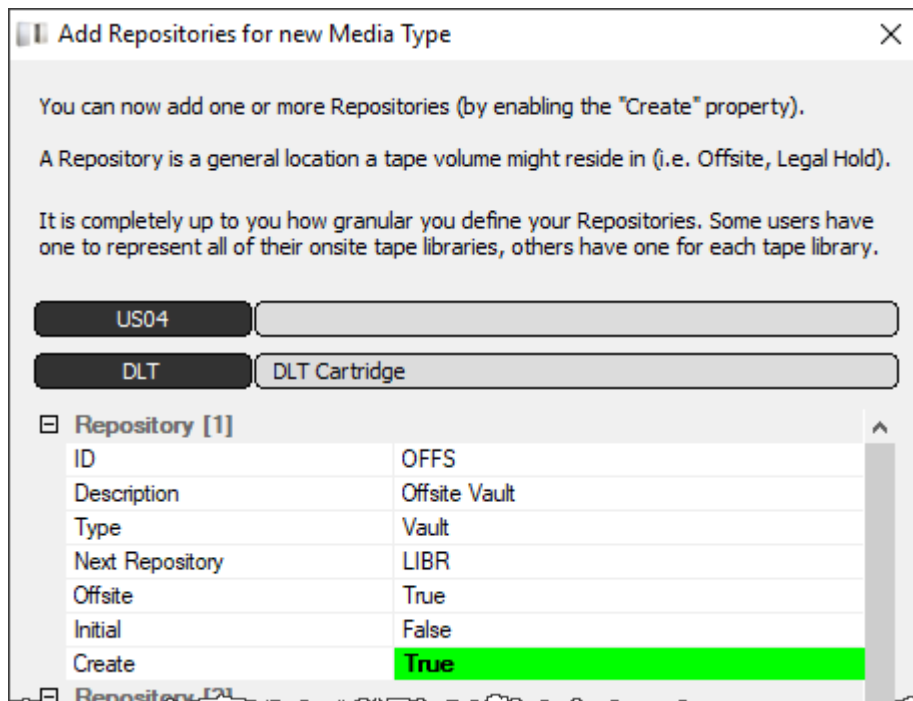
ID	DLT
Description	DLT Cartridge
Create	True

 Media Type[3]

ID	359X
Description	IBM 359x Cartridge

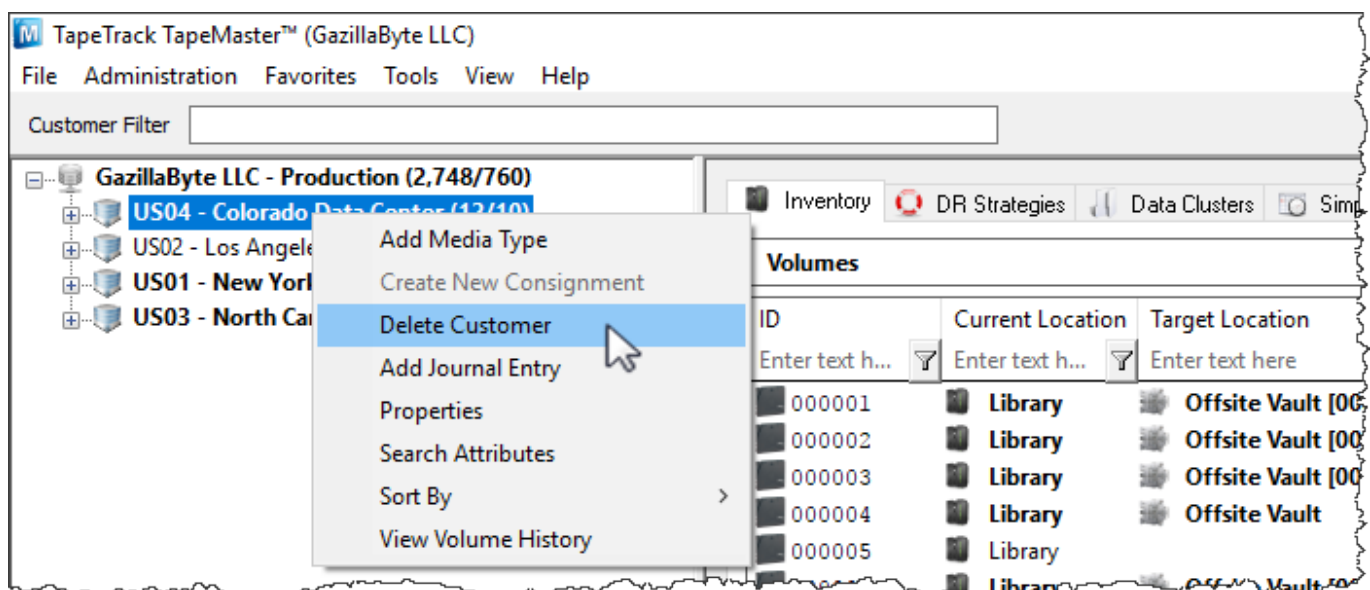
Click OK to continue.

The next prompt will be to add any required [Repositories](#). Create relevant [Repositories](#) by changing the Create option from False to True. Other fields, [Repository-ID](#) and [Description](#), may be edited or customized your required values.

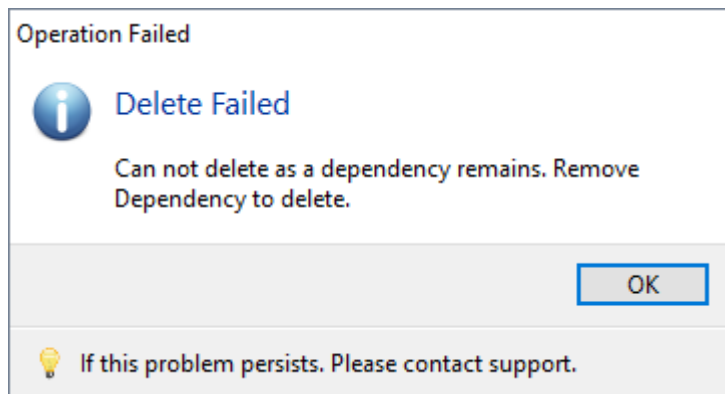


Delete Customer

To delete a [Customer](#), right-click on the [Customer](#) in the [Customer Tree](#) and select Delete Customer.

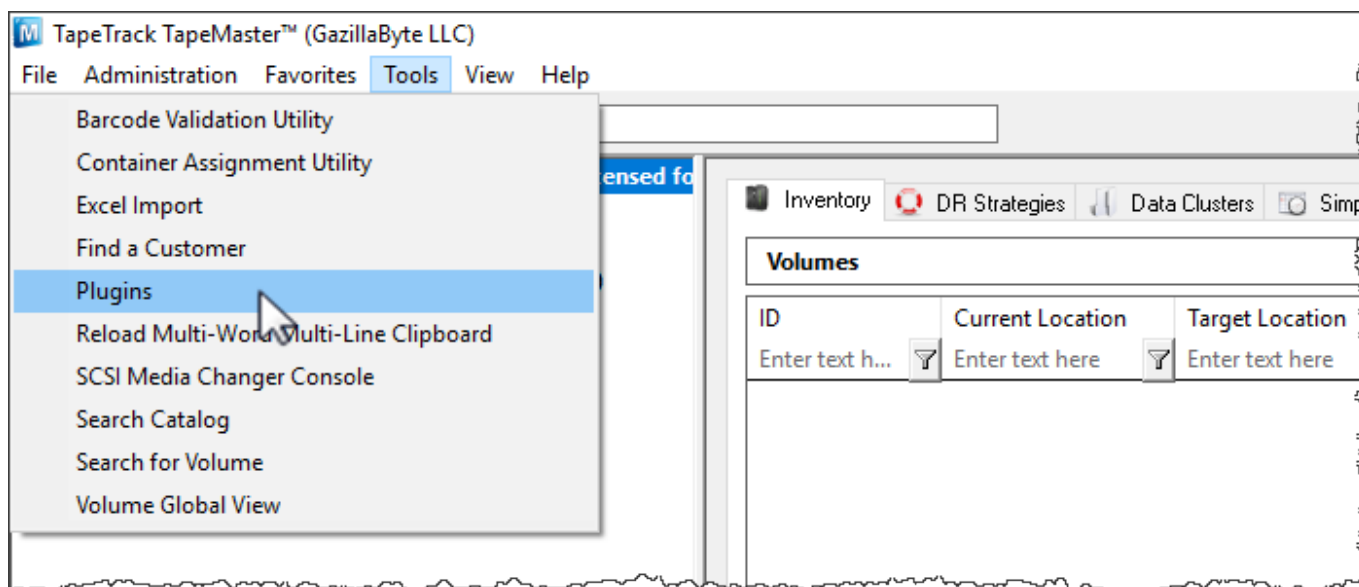


A [Customer](#) may only be deleted when it does not contain [Media Types](#), [Repositories](#), or [Volumes](#).

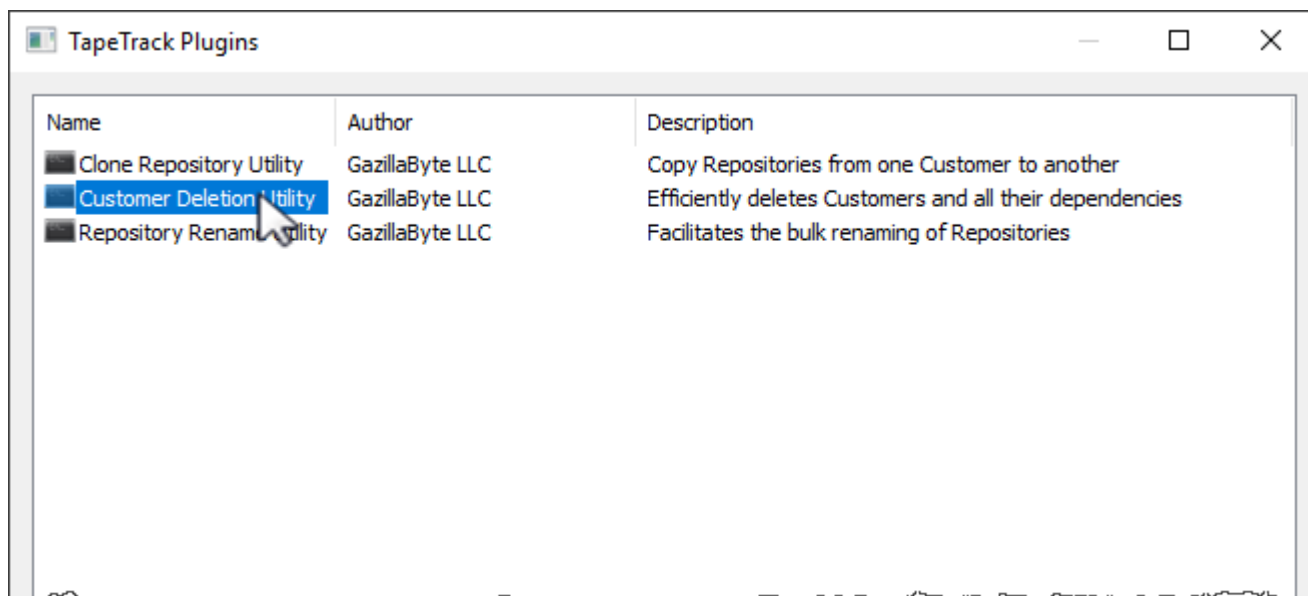


If you receive this error, delete all [Volumes](#), then all [Repositories](#) and all [Media types](#) before deleting [Customer](#).

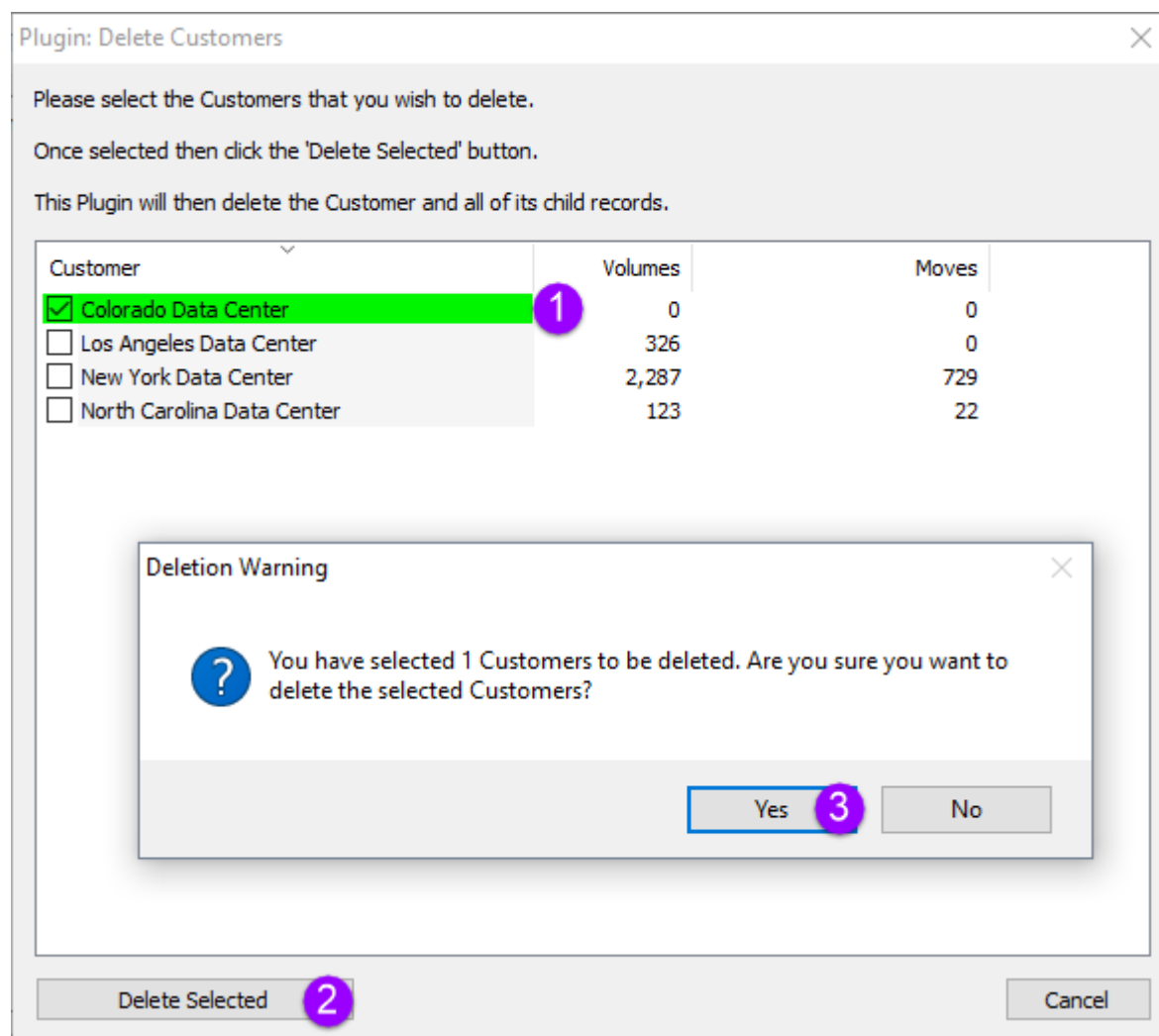
You can also delete [Customer](#) (without the need to remove [Volumes](#), [Repositories](#) and media types first) by using the [Customer Delete](#) plugin. From the menu select Tools → Plugins



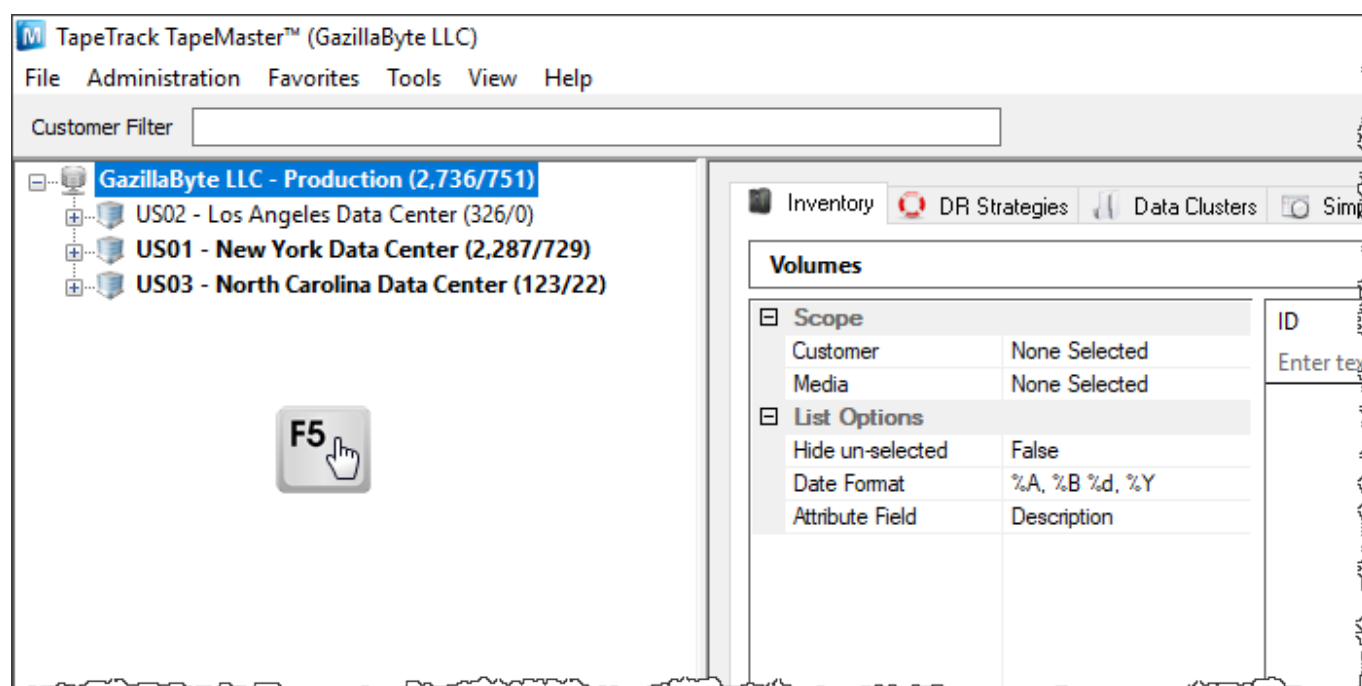
Select the Customer Deletion Utility by double-clicking.



Check each [Customer](#) (1) you wish to remove and click **Delete Selected** (2) and **Yes** (3) to the warning popup.



Exit out of the plugins windows using the X at the top right and press F5 in the [Customer Tree](#) to refresh information.



From:

<https://rtfm.tapetrack.com/> - **TapeTrack Documentation**

Permanent link:

<https://rtfm.tapetrack.com/master/customer?rev=1617063292>

Last update: **2025/01/21 22:07**

